

F.A.P. RTE.	SECTION	COUNTY	TOTAL SHEETS	SHEET NO.
713	120B-3	SCHUYLER	75	1
FED. ROAD DIST. NO.	ILLINOIS	CONTRACT NO. 72A03		

**STATE OF ILLINOIS
DEPARTMENT OF TRANSPORTATION
DIVISION OF HIGHWAYS**

**PROPOSED
HIGHWAY PLANS**

**FAP 713 (IL ROUTE 101)
SECTION 120B-3
PROJECT: ACRF-0713(008)
SCHUYLER COUNTY
STRUCTURE REPLACEMENT
C-96-127-10**

INDEX OF SHEETS

- 1 COVER SHEET
- 2 GENERAL NOTES
- 3-6 SUMMARY OF QUANTITIES
- 7 TYPICAL SECTIONS
- 8-9 SCHEDULE OF QUANTITIES
- 10 ALIGNMENT & BENCHMARK DATA
- 11-15 TRAFFIC CONTROL AND PROTECTION
- 16-19 PLAN AND PROFILE
- 20 EROSION CONTROL PLAN
- 21-65 S.N. 085-0514 PLANS
- 66 ENTRANCE DETAILS
- 66A-75 CROSS SECTIONS

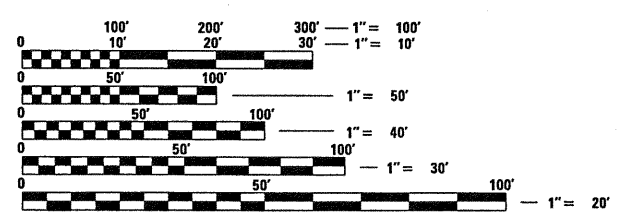
HIGHWAY STANDARDS

000001-05	630001-08	701301-03
001001-02	631031-08	701306-02
280001-05	635006-03	701311-03
420401-08	635011-02	701321-10
515001-03	701001-02	701326-03
542401-01	701006-03	701901-01
601101-01	701011-02	704001-06
606201-02	701201-03	780001-02

*542406-01
609001-05*

DESIGN DESIGNATION

FAP 713 (IL 101)
MINOR ARTERIAL (NON URBAN)
ADT = 500 (2008); 570 (2020)
DESIGN SPEED = 55 MPH

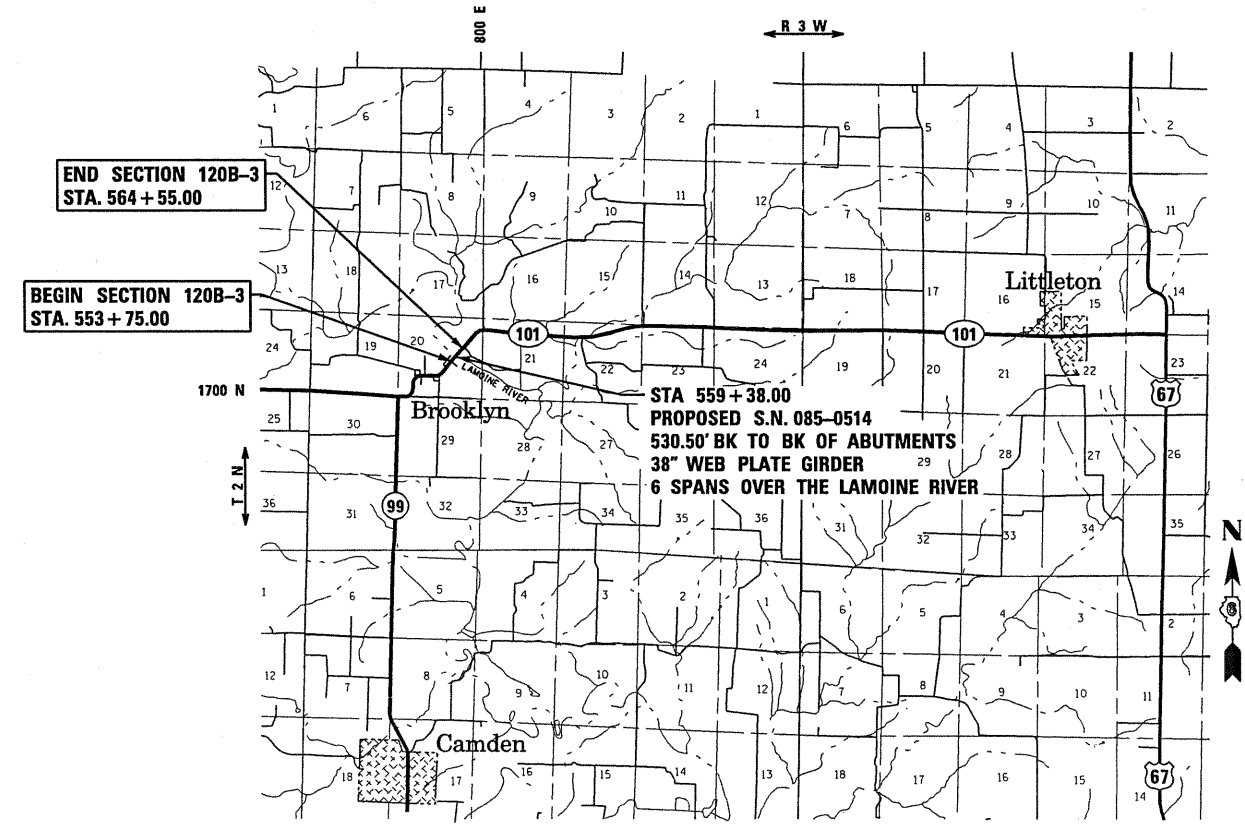


FULL SIZE PLANS HAVE BEEN PREPARED USING STANDARD ENGINEERING SCALES. REDUCED SIZED PLANS WILL NOT CONFORM TO STANDARD SCALES. IN MAKING MEASUREMENTS ON REDUCED PLANS, THE ABOVE SCALES MAY BE USED.

J.U.L.I.E.
JOINT UTILITY LOCATION INFORMATION FOR EXCAVATION
1-800-892-0123
OR 811

PROJECT ENGINEER: SAL MADONIA (217) 782-4761
PROJECT MANAGER: MARCUS BRUCE (217) 524-0946

CONTRACT NO. 72A03



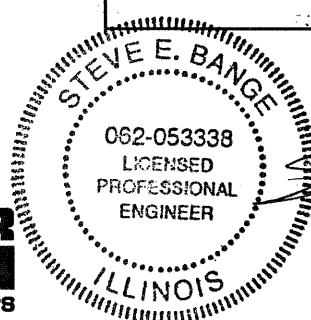
**LOCATION MAP
SCALE: 1" = 5000'**

GROSS LENGTH OF SECTION 120B-3 = 0.2045 MILES (1080.00 FT)
NET LENGTH OF SECTION 120B-3 = 0.2045 MILES (1080.00 FT)

PLANS PREPARED BY:

KLINGNER & ASSOCIATES, P.C.
Engineers • Architects • Surveyors

615 North 24th Street, Quincy, IL Ph (217) 223-3678 - Fax (217) 223-3683
4518 Paris Gravel Road, Hannibal, MO Ph (573) 221-8828 - Fax (573) 221-8812
318 N. 4th Street, Suite 100, Burlington, IA Ph (319) 753-1636 - Fax (319) 752-3585
49 North Frame Street, Galesburg, IL Ph (309) 342-4842 - Fax (309) 341-3781
Internet Address: www.klingner.com



STEVE E. BANGE
REGISTERED PROFESSIONAL ENGINEER
STATE OF ILLINOIS NO. 062-053338
LICENSE EXPIRES NOVEMBER 30, 2011

STATE OF ILLINOIS
DEPARTMENT OF TRANSPORTATION
DIVISION OF HIGHWAYS

SUBMITTED *April 17 2010*
Reginald D. Kelly
DEPUTY DIRECTOR OF HIGHWAYS, REGION ENGINEER

October 1 2010
Scott E. Stitt, P.E.
acting ENGINEER OF DESIGN AND ENVIRONMENT

October 1 2010
Christine M. Reed, P.E.
DIRECTOR OF HIGHWAYS, CHIEF ENGINEER

**PRINTED BY THE AUTHORITY
OF THE STATE OF ILLINOIS**