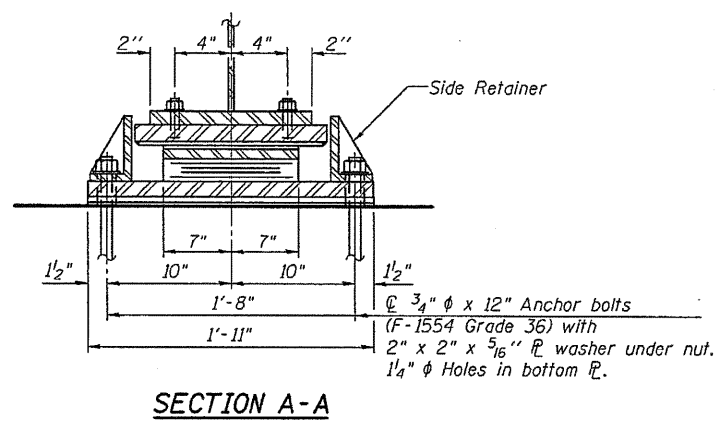
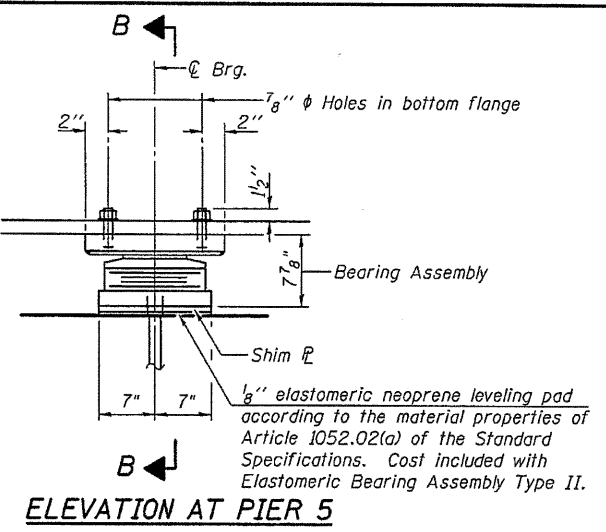


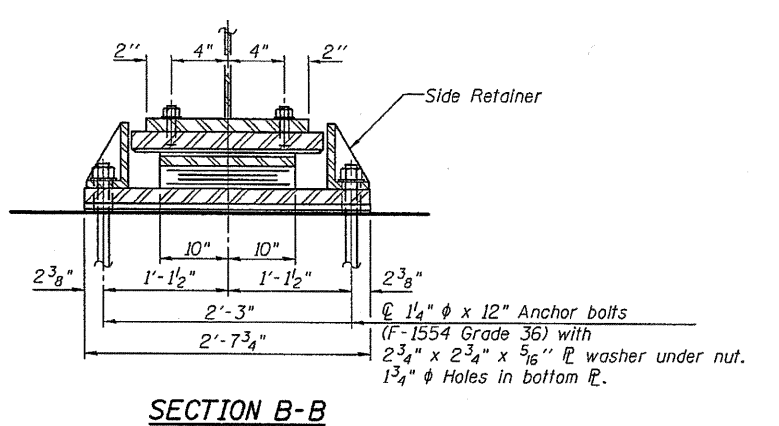
ELEVATION AT ABUTMENTS



SECTION A-A



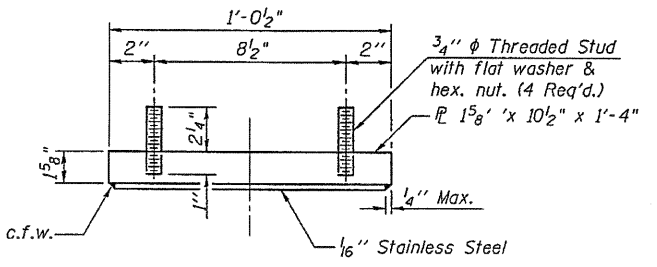
ELEVATION AT PIER 5



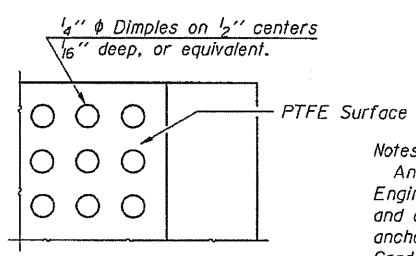
SECTION B-B

TYPE II ELASTOMERIC EXP. BRG. - ABUTMENTS

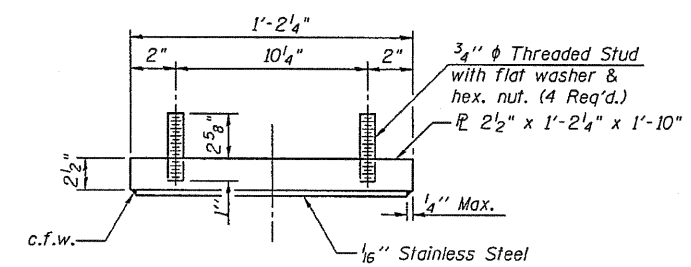
TYPE II ELASTOMERIC EXP. BRG. - PIER 5



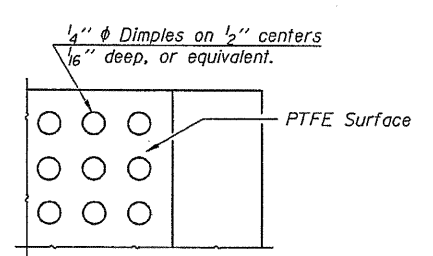
TOP BEARING ASSEMBLY - ABUTS.



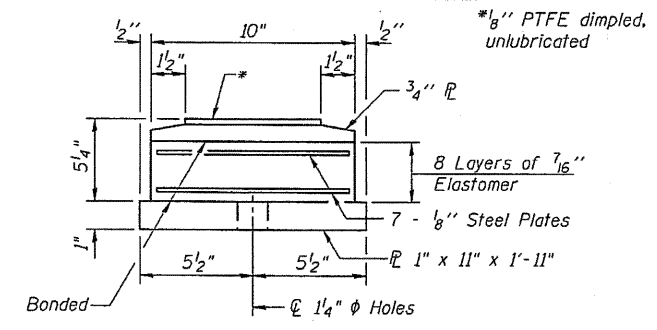
PLAN-PTFE SURFACE - ABUTS.



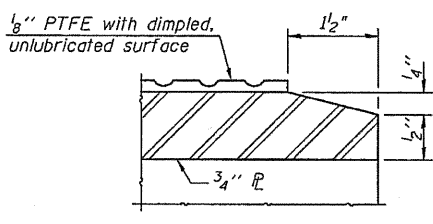
TOP BEARING ASSEMBLY - PIER 5



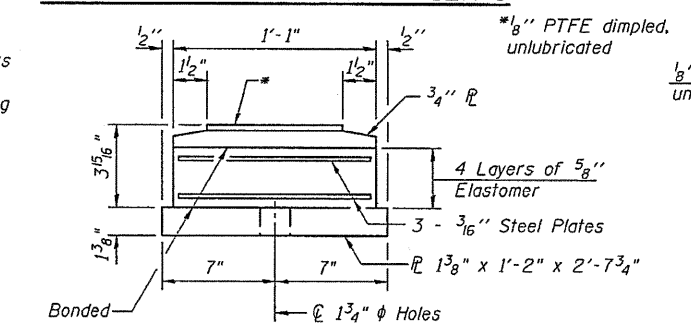
PLAN-PTFE SURFACE - PIER 5



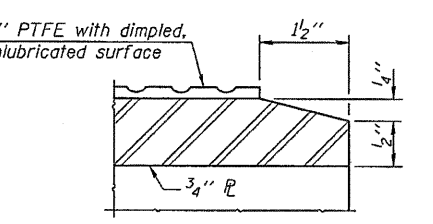
BOTTOM BEARING ASSEMBLY - ABUTS.



SECTION THRU PTFE - ABUTS.



BOTTOM BEARING ASSEMBLY - PIER 5



SECTION THRU PTFE - PIER 5

Notes:
 Anchor bolts shall be ASTM F1554 all-thread for an Engineer-approved alternate material) of the grade(s) and diameter(s) specified. ASTM A307 Grade C anchor bolts may be used in lieu of ASTM F1554 Grade 36 (Fy=36ksi). The corresponding specified grade of AASHTO M314 anchor bolts may be used in lieu of ASTM F1554.
 Anchor bolts for Type II bearings shall be placed in holes drilled in the concrete through holes in the bottom bearing plate after members are in place. Side retainers shall be placed after bolts are installed.
 Drilled and set anchor bolts shall be installed according to Article 521.06 of the Standard Specifications.
 Side retainers and other steel members required for the bearing assembly shall be included in the cost of Elastomeric Bearing Assembly, Type II.
 The 1/8" PTFE sheet shall be bonded directly to the top steel plate with a two-component, medium viscosity epoxy resin, conforming to the requirements of the Federal Specification MMM-A-134, Type I. The bond agent shall be applied on the full area of the contact surfaces.
 Bonding of 1/8" PTFE sheet during vulcanizing process will be permitted provided the process and method of adjusting assembly height is approved by the Engineer.
 Two 1/8" adjusting shims shall be provided for each bearing in addition to all other plates or shims and placed as shown on bearing details.
 The structural steel plates of the Bearing Assembly shall conform to the requirements of AASHTO M 270 Grade 50W.

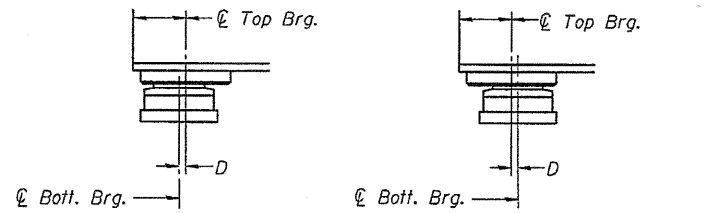
BILL OF MATERIAL

Item	Unit	Total
Elastomeric Bearing Assembly Type II	Each	18
Anchor Bolts, 3/4"	Each	24
Anchor Bolts, 1/4"	Each	12

BEARING DETAILS S.N. 085-0514

SHEET NO.26	F.A.P. RTE.	SECTION	COUNTY	TOTAL SHEETS	SHEET NO.
	713	120B-3	SCHUYLER	75	46
45 SHEETS	CONTRACT NO. 72A03				
	FED. ROAD DIST. NO. - ILLINOIS FED. AID PROJECT				

DESIGNED RJP
CHECKED ADL
DRAWN RJP
CHECKED ADL



SETTING ANCHOR BOLTS AT EXP. BRG.

D=1/8" per each 100' of expansion for every 15° temp. change from the normal temp. of 50°F.