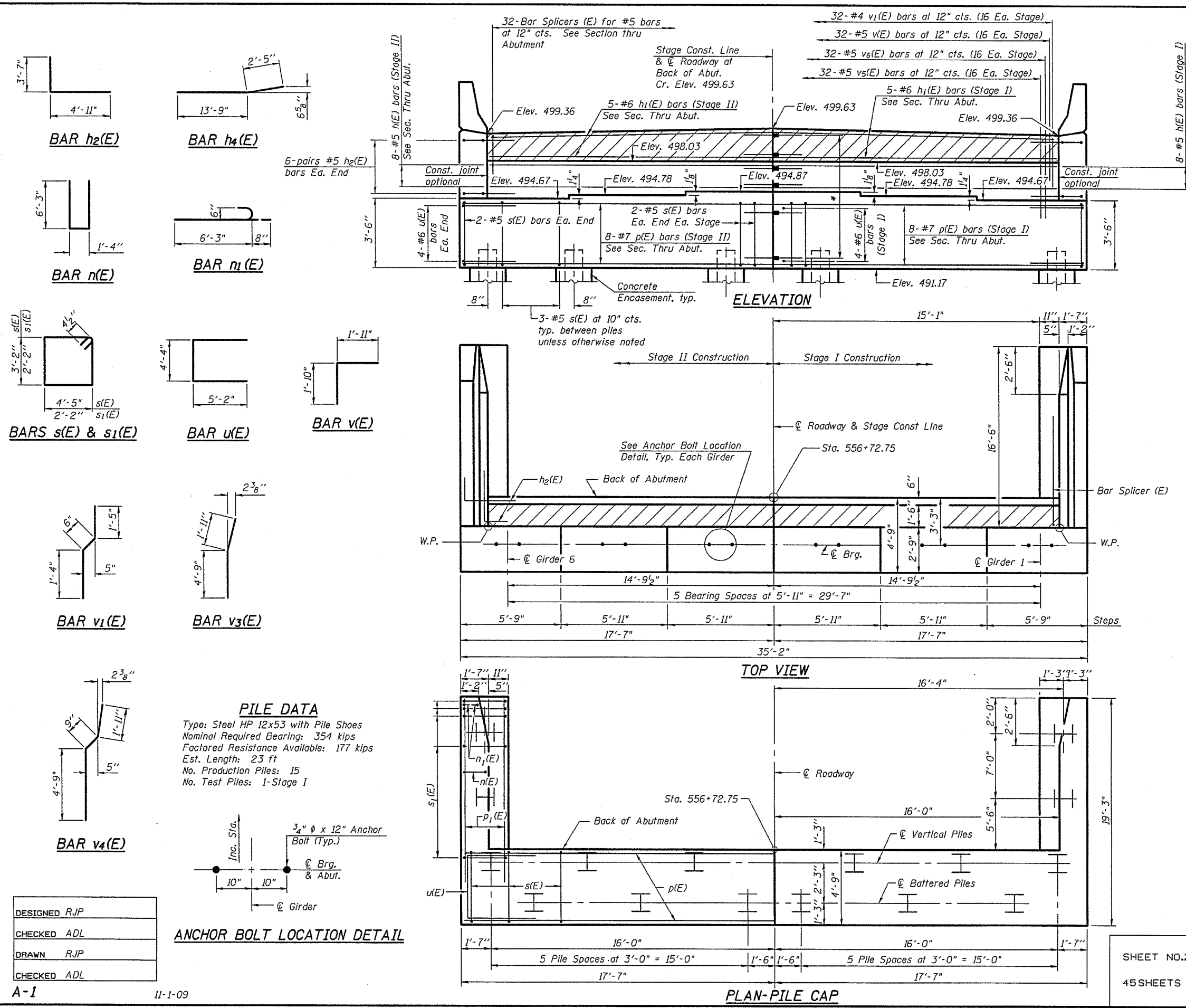


9/10/2010 11:46:36 AM  
 P:\06f11es\060245\021\_W010\_IL101-Lamoine\BRIDGE PLANS\ABUTMENTS.dgn



\*8-Bar Splicers (E) for #7 bars  
 5-Bar Splicers (E) for #6 bars  
 8-Bar Splicers (E) for #5 bars

**WEST ABUTMENT  
 BILL OF MATERIAL**

Bar	No.	Size	Length	Shape
h(E)	16	#5	15'-8"	
h1(E)	10	#6	15'-8"	
h2(E)	24	#5	8'-6"	
h3(E)	24	#4	16'-2"	
h4(E)	16	#4	16'-2"	
n(E)	28	#6	13'-10"	
n1(E)	12	#6	6'-11"	
p(E)	16	#7	17'-3"	
p1(E)	12	#7	16'-2"	
s(E)	38	#5	15'-11"	
s1(E)	36	#4	9'-5"	
u(E)	12	#6	14'-8"	
v(E)	32	#5	3'-9"	
v1(E)	32	#4	3'-3"	
v2(E)	34	#6	7'-2"	
v3(E)	6	#6	6'-8"	
v4(E)	28	#6	7'-5"	
v5(E)	32	#5	4'-10"	
v6(E)	32	#5	5'-5"	
Structure Excavation		Cu. Yd.	163	
Concrete Structures		Cu. Yd.	47.1	
Reinforcement Bars, Epoxy Coated		Pound	5,200	
Furnishing HP 12x53 Piles,		Foot	345	
Driving Piles		Foot	345	
Test Pile, HP 12x53		Each	1	
Pile Shoes		Each	16	
Bar Splicers		Each	53	
Concrete Encasement		Cu. Yd.	5.6	
Concrete Sealer		Sq. Ft.	390	

For details of Bar Splicers, see sheet 36 of 45.  
 For details of piles and Concrete Encasement, see sheet 37 of 45.

**WEST ABUTMENT  
 S.N. 085-0514**

SHEET NO. 27 45 SHEETS	F.A.P. RTE.	SECTION	COUNTY	TOTAL SHEETS	SHEET NO.
	713	120B-3	SCHUYLER	75	47
			CONTRACT NO. 72A03		
FED. ROAD DIST. NO. ILLINOIS FED. AID PROJECT					

Klingner & Associates P.C.