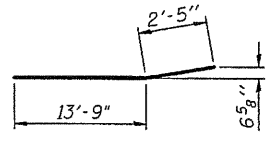
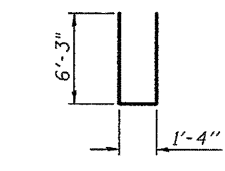


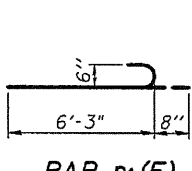
BAR h2(E)



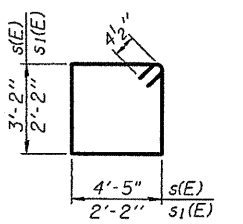
BAR h4(E)



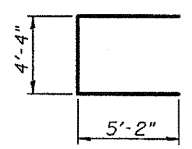
BAR n(E)



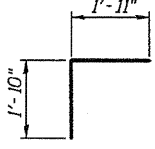
BAR n1(E)



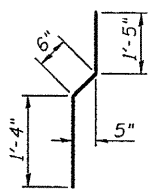
BARS s(E) & s1(E)



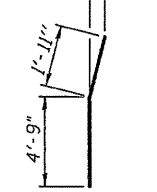
BAR u(E)



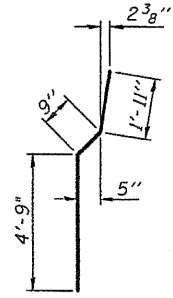
BAR v(E)



BAR v1(E)

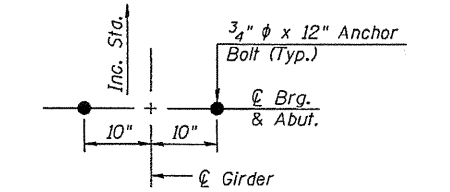


BAR v3(E)



BAR v4(E)

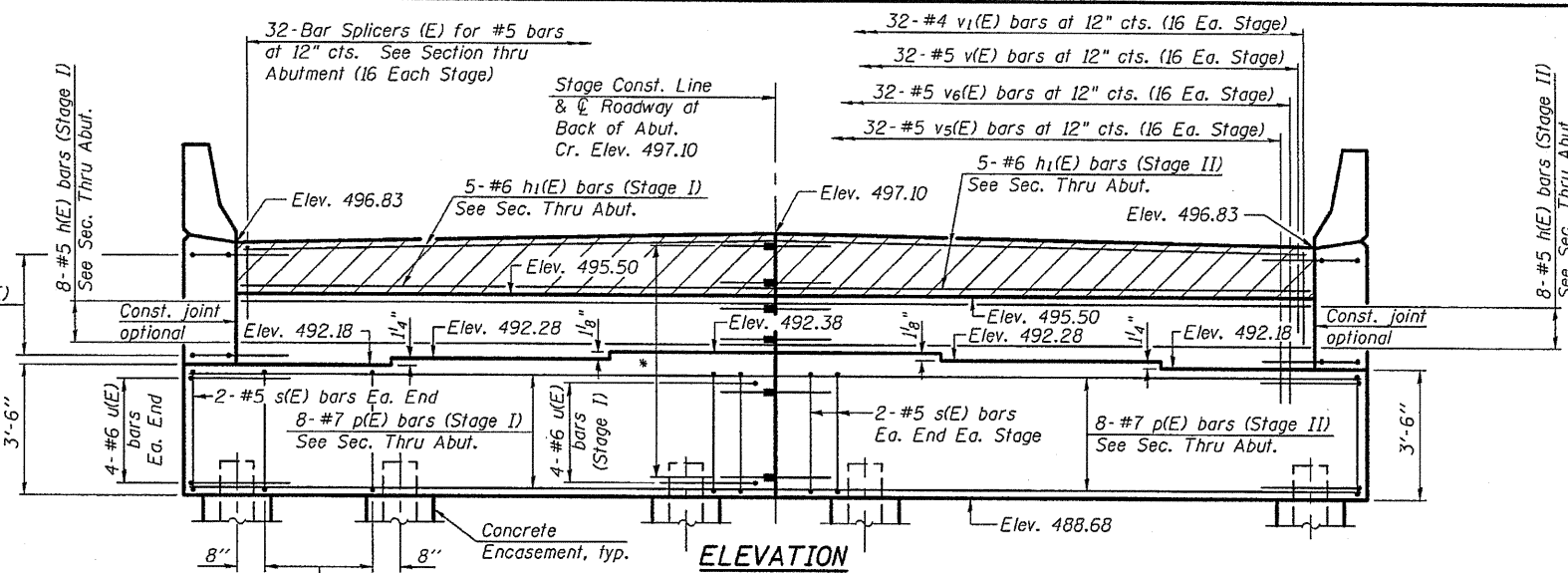
**PILE DATA**  
 Type: Steel HP 12x53 with Pile Shoes  
 Nominal Required Bearing: 354 kips  
 Factored Resistance Available: 177 kips  
 Est. Length: 37 ft  
 No. Production Piles: 15  
 No. Test Piles: 1-Stage I



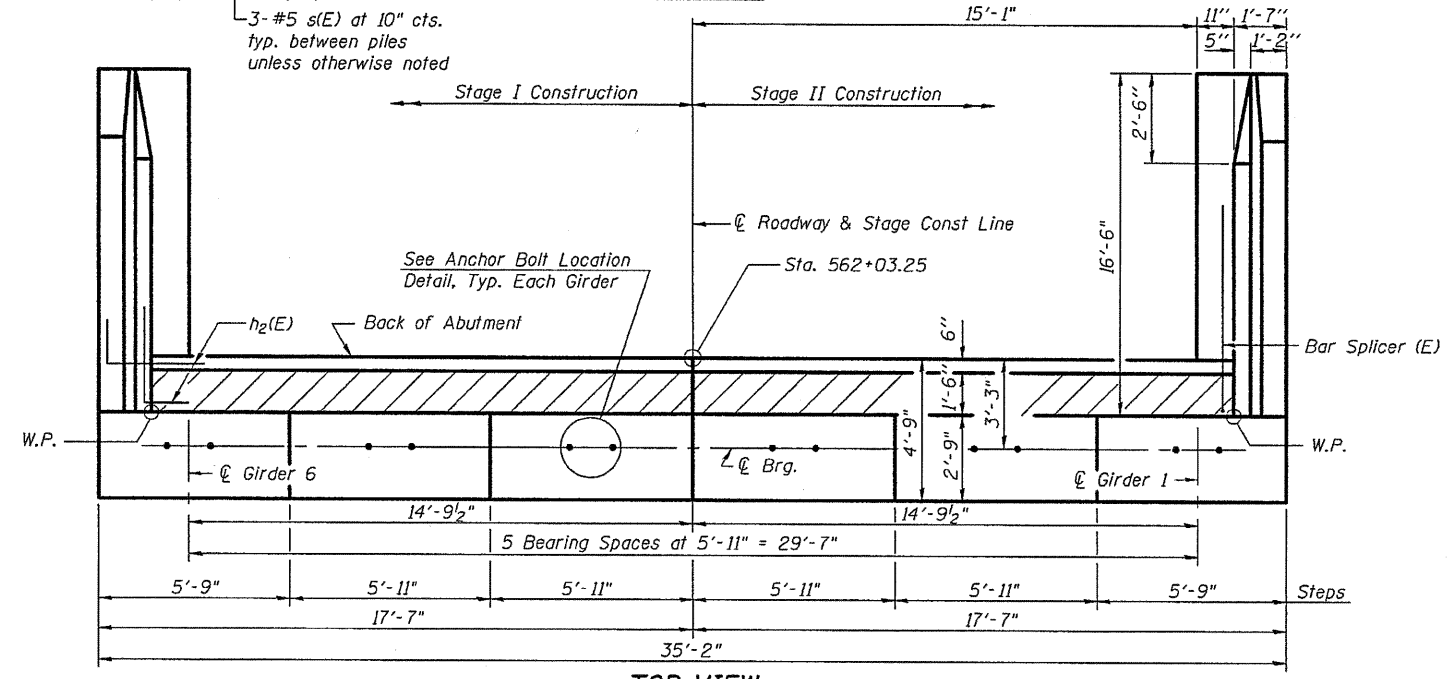
ANCHOR BOLT LOCATION DETAIL

DESIGNED	RJP
CHECKED	ADL
DRAWN	RJP
CHECKED	ADL

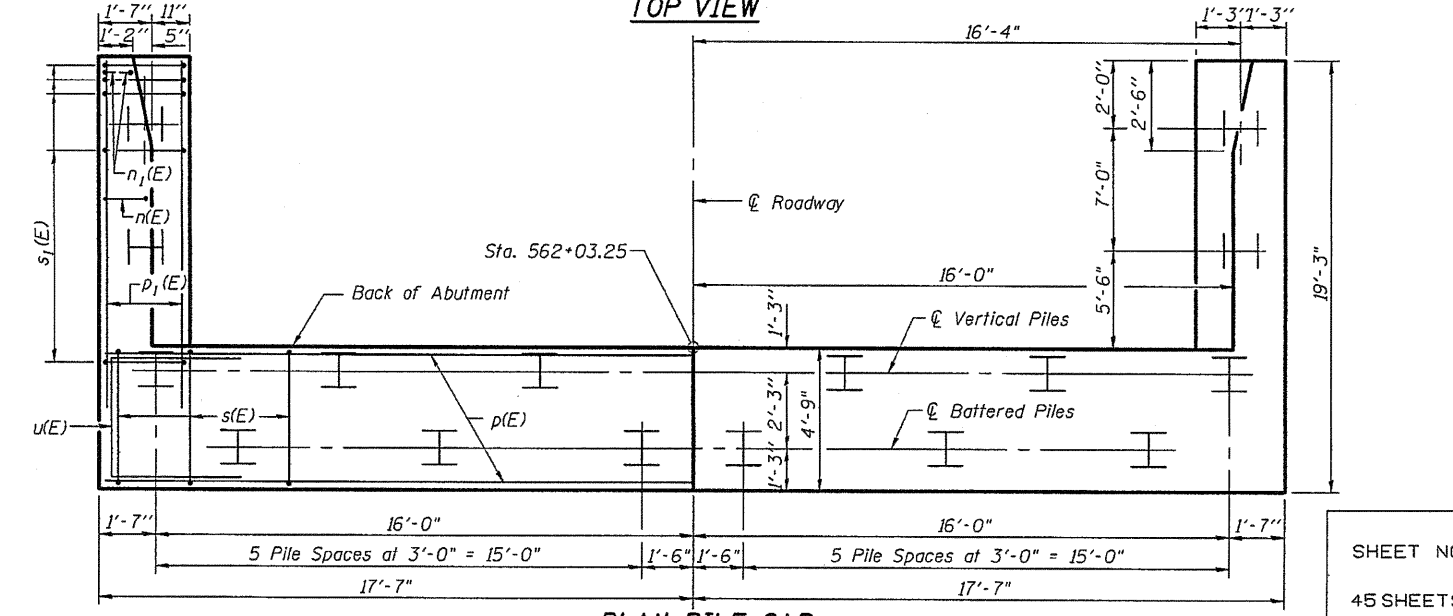
A-1 11-1-09



ELEVATION



TOP VIEW



PLAN-PILE CAP

\*8-Bar Splicers (E) for #7 bars  
 5-Bar Splicers (E) for #6 bars  
 8-Bar Splicers (E) for #5 bars

**EAST ABUTMENT  
 BILL OF MATERIAL**

Bar	No.	Size	Length	Shape
h(E)	16	#5	15'-8"	—
h1(E)	10	#6	15'-8"	—
h2(E)	24	#5	8'-6"	—
h3(E)	24	#4	16'-2"	—
h4(E)	16	#4	16'-2"	—
n(E)	28	#6	13'-10"	—
n1(E)	12	#6	6'-11"	—
p(E)	16	#7	17'-3"	—
p1(E)	12	#7	16'-2"	—
s(E)	38	#5	15'-11"	—
s1(E)	36	#4	9'-5"	—
u(E)	12	#6	14'-8"	—
v(E)	32	#5	3'-9"	—
v1(E)	32	#4	3'-3"	—
v2(E)	34	#6	7'-2"	—
v3(E)	6	#6	6'-8"	—
v4(E)	28	#6	7'-5"	—
v5(E)	32	#5	4'-10"	—
v6(E)	32	#5	5'-5"	—
Structure Excavation			Cu. Yd.	163
Concrete Structures			Cu. Yd.	47.1
Reinforcement Bars, Epoxy Coated			Pound	5,200
Furnishing HP 12x53 Piles,			Foot	555
Driving Piles			Foot	555
Test Pile, HP 12x53			Each	1
Pile Shoes			Each	16
Bar Splicers			Each	53
Concrete Encasement			Cu. Yd.	5.6
Concrete Sealer			Sq. Ft.	390

For details of Bar Splicers, see sheet 36 of 45.  
 For details of piles and Concrete Encasement, see sheet 37 of 45.

**EAST ABUTMENT  
 S.N. 085-0514**

SHEET NO.29 45 SHEETS	F.A.P. RTE. 713	SECTION 120B-3	COUNTY SCHUYLER	TOTAL SHEETS 75	SHEET NO. 49
	CONTRACT NO. 72A03				
FED. ROAD DIST. NO. ILLINOIS FED. AID PROJECT					