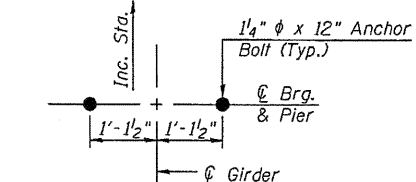
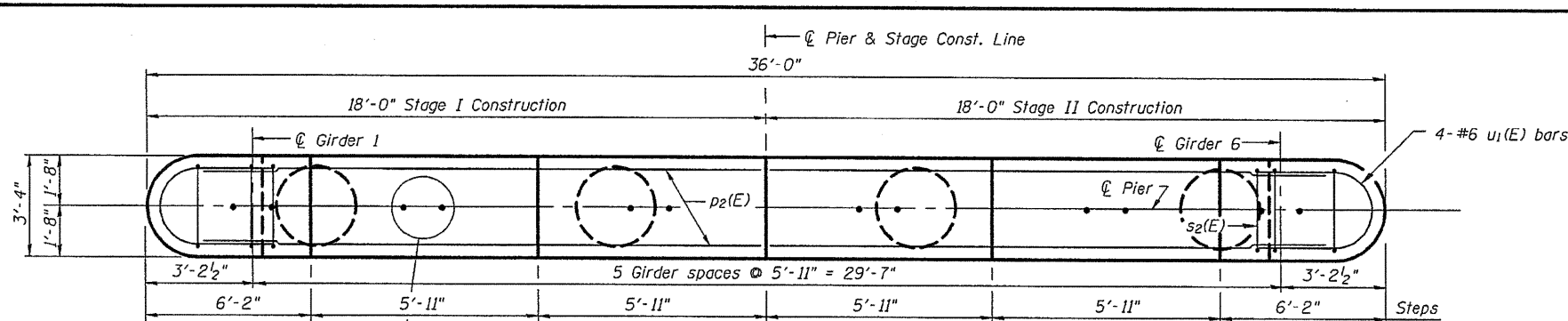


9/10/2010

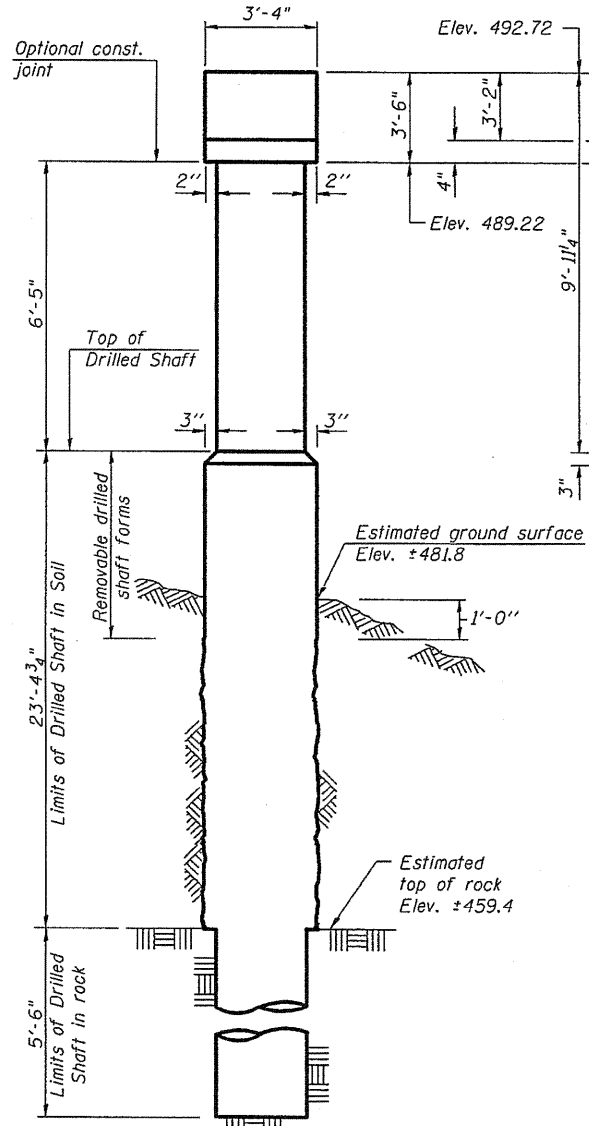
P:\06f1.es\060245\021_V010_IL101.Lemoine BRIDGE PLANS\PIERS.dgn



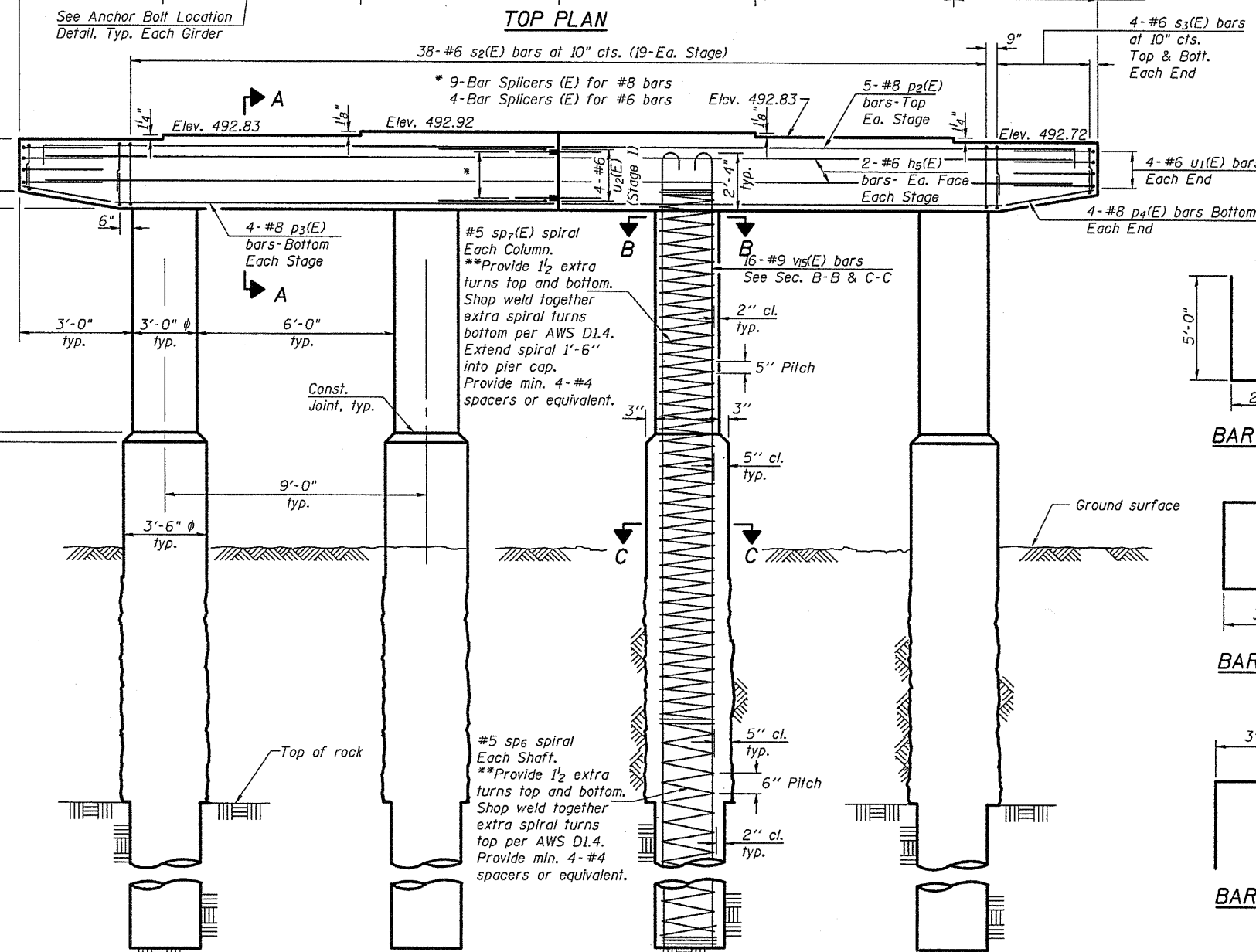
ANCHOR BOLT LOCATION DETAIL



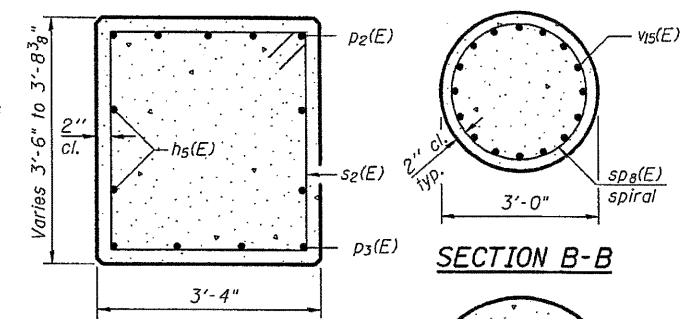
TOP PLAN



END VIEW

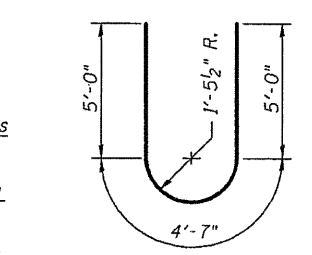


**ELEVATION
(Looking East)**

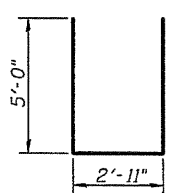


SECTION A-A

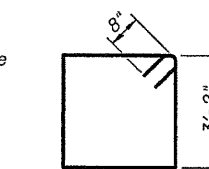
SECTION B-B



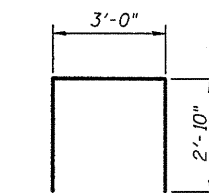
BAR u1(E)



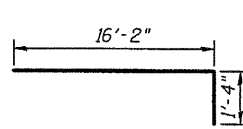
BAR u2(E)



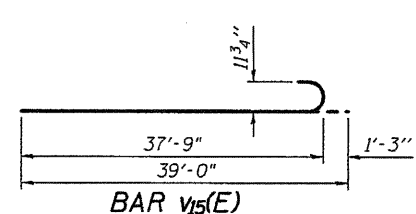
BAR s2(E)



BAR s3(E)



BAR p2(E)



BAR v5(E)

BILL OF MATERIAL

Bar No.	Size	Length	Shape
h5(E)	#8	16'-2"	—
p2(E)	#8	17'-6"	—
p3(E)	#8	15'-6"	—
p4(E)	#8	2'-6"	—
s2(E)	#6	13'-8"	□
s3(E)	#6	8'-8"	□
sp6	#5	17'-4"	~
sp7(E)	#5	17'-10"	~
u1(E)	#6	14'-7"	U
u2(E)	#6	12'-11"	U
v5(E)	#9	39'-0"	U
Concrete Structures	Cu. Yd.	22.3	
Reinforcement Bars, Epoxy Coated	Pound	12,810	
Reinforcement Bars	Pounds	1,600	
Drilled Shaft in Soil	Cu. Yd.	33.3	
Drilled Shaft in Rock	Cu. Yd.	5.8	
Bar Splicers	Each	13	

Cast steps monolithically with cap.
Space cap reinforcement to miss anchor bolts.
Minimum lap for spirals = 2'-2"
** Length is height of spiral.

DESIGNED	RJP
CHECKED	ADL
DRAWN	RJP
CHECKED	ADL

**Allowable substitution:
Provide 1/2 extra turns top and bottom with 135° standard hook into core at ends of spiral.

Note:
When splicing of spiral reinforcement is necessary, the spirals shall be provided with 1/2 extra turns at the ends to be spliced. These additional turns shall either be welded together according to AWS D1.4, or shall both terminate with a 135° standard hook.

**PIER 5
S.N. 085-0514**

SHEET NO. 35 45 SHEETS	F.A.P. RTE. 713	SECTION 120B-3	COUNTY SCHUYLER	TOTAL SHEETS 75	SHEET NO. 55
	CONTRACT NO. 72A03				
FED. ROAD DIST. NO. ILLINOIS FED. AID PROJECT					

Klingner & Associates P.C.