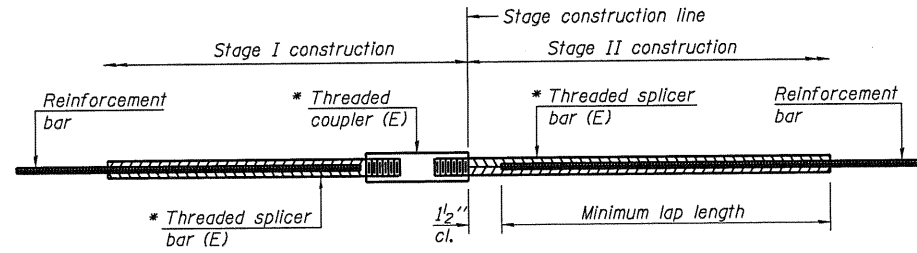


Sep-07-2010 10:35:52AM:35:52 AM



**STANDARD BAR SPLICER ASSEMBLY**

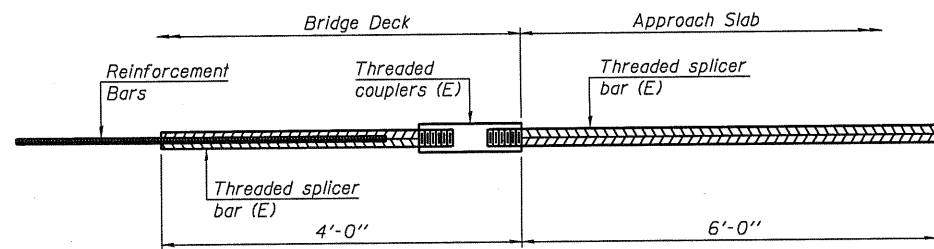
Minimum Lap Lengths				
Bar size to be spliced	Table 1	Table 2	Table 3	Table 4
3, 4	1'-5"	1'-11"	2'-1"	2'-4"
5	1'-9"	2'-5"	2'-7"	2'-11"
6	2'-1"	2'-11"	3'-1"	3'-6"
7	2'-9"	3'-10"	4'-2"	4'-8"
8	3'-8"	5'-1"	5'-5"	6'-2"
9	4'-7"	6'-5"	6'-10"	7'-9"

Table 1: Black bar, 0.8 Class C  
 Table 2: Black bar, Top bar lap, 0.8 Class C  
 Table 3: Epoxy bar, 0.8 Class C  
 Table 4: Epoxy bar, Top bar lap, 0.8 Class C

Threaded splicer bar length = min. lap length + 1 1/2" + thread length

\* Epoxy not required on Bar Splicer Assembly components used in conjunction with black bars.

Location	Bar size	No. assemblies required	Table for minimum lap length
Abutments	#7	16	Table 3
Abutments	#6	10	Table 3
Abutments	#5	16	Table 3
Approaches	#4	50	Table 4
Approaches	#5	172	Table 3
Piers	#8	45	Table 3
Piers	#6	20	Table 3
Piers	#5	436	Table 3
Bridge Deck	#5	1,527	Table 3

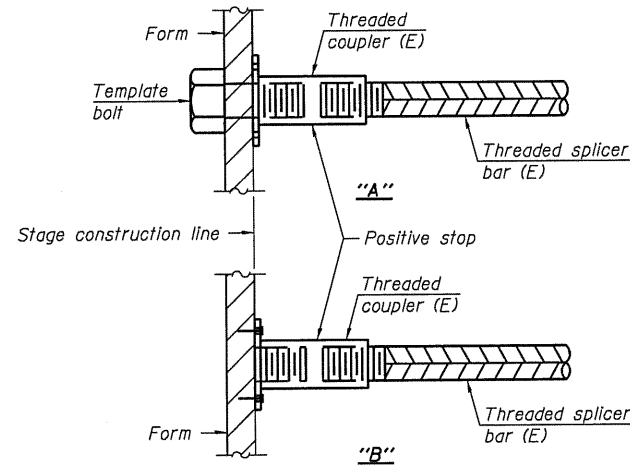


**BAR SPLICER ASSEMBLY FOR #5 BAR ON INTEGRAL OR SEMI-INTEGRAL ABUTMENTS**

No. required =

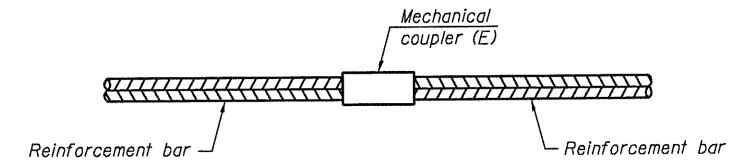
DESIGNED	RJP
CHECKED	ADL
DRAWN	RJP
CHECKED	ADL

BSD-1 11-1-09



**INSTALLATION AND SETTING METHODS**

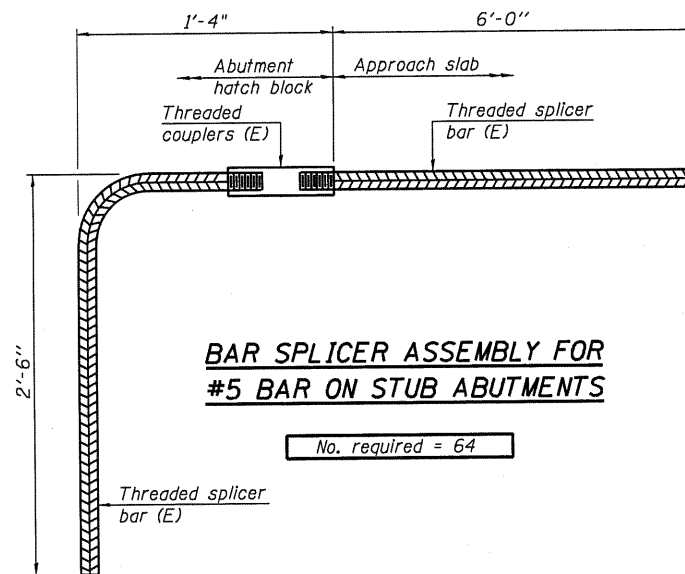
"A" : Set bar splicer assembly by means of a template bolt.  
 "B" : Set bar splicer assembly by nailing to wood forms or cementing to steel forms.  
 (E) : Indicates epoxy coating.



**STANDARD MECHANICAL SPLICER**

Location	Bar size	No. assemblies required
W. Abutment	#6	*4
E. Abutment	#6	*4

\*Cost Included with Furnishing and Erecting Structural Steel. See sheet 19 of 45.



**BAR SPLICER ASSEMBLY FOR #5 BAR ON STUB ABUTMENTS**

No. required = 64

**NOTES**

Splicer bars shall be deformed with threaded ends and have a minimum 60 ksi yield strength.  
 All reinforcement shall be lapped and tied to the splicer bars.  
 Bar splicer assemblies shall be epoxy coated according to the requirements for reinforcement bars. See Section 508 of the Standard Specifications.  
 See special provision for Mechanical Splicers.  
 See approved list of bar splicer assemblies and mechanical splicers for alternatives.

**BAR SPLICER ASSEMBLY DETAILS**  
 S.N. 085-0514

SHEET NO.36	F.A.P. RTE.	SECTION	COUNTY	TOTAL SHEETS	SHEET NO.
	713	120B-3	SCHUYLER	75	56
45 SHEETS	CONTRACT NO. 72A03				
FED. ROAD DIST. NO.		ILLINOIS FED. AID PROJECT			

Klingner & Associates P.C.