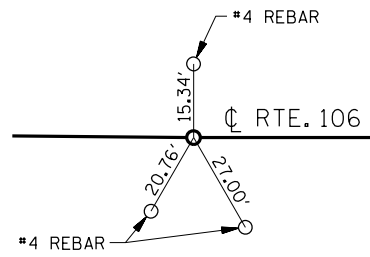
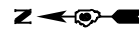
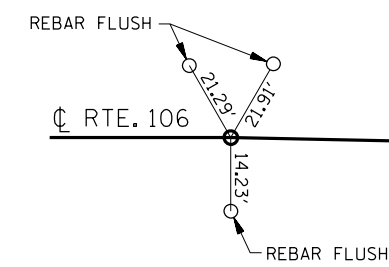
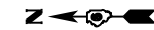


TIE NO. 1

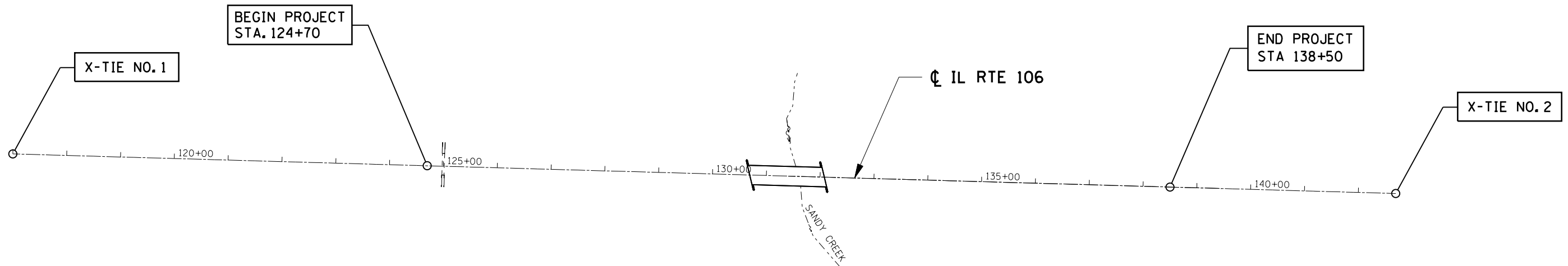


P.I. STA. 117+00.00
P.K. NAIL IN CHISELED "X"

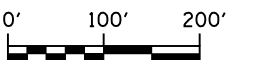
TIE NO. 2



P.I. STA. 142+69.50
P.K. NAIL IN CHISELED "X"



B.M. 500 SET CHISELED 'd' " S. END OF EX CONCRETE HEADWALL @ STA. 125+00 ELEV. 487.45	B.M. 501 SET CHISELED 'd' " NW ABUTMENT SN 086+0012@ STA. 131+02.5, 16.8' RT ELEV. 484.00	B.M. I DISTINCTIVE POINT ON NE WINGWALL OF BRIDGE OVER IL RTE 106 ± STA. 131+42 ELEV. 484.88	B.M. H PK NAIL IN N. GATE POST, W. SIDE IL RTE 106 @ HILL FROM FA 566 ELEV. 525.21
---	---	--	--



FILE NAME = c:\pwork\pwork\laughlin\0238533\0672891_sht_align.dgn	USER NAME = laughlinr1	DESIGNED - E.R.O.	REVISED -	STATE OF ILLINOIS DEPARTMENT OF TRANSPORTATION	ALIGNMENT SHEET			F.A.P. RTE. 566	SECTION 1(B-2)	COUNTY SCOTT	TOTAL SHEETS 77	SHEET NO. 11
PLOT SCALE = 200.0000' / in.	CHECKED - J.S.A.	REVISED -	REVISED -		SCALE: 1" = 100'	SHEET NO. OF	SHEETS	STA.	TO STA.	CONTRACT NO. 72B91		
PLOT DATE = Aug-26-2010 11:17:18AM	DATE -	REVISED -	REVISED -		FED. ROAD DIST. NO. 6 ILLINOIS FED. AID PROJECT							