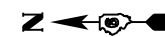


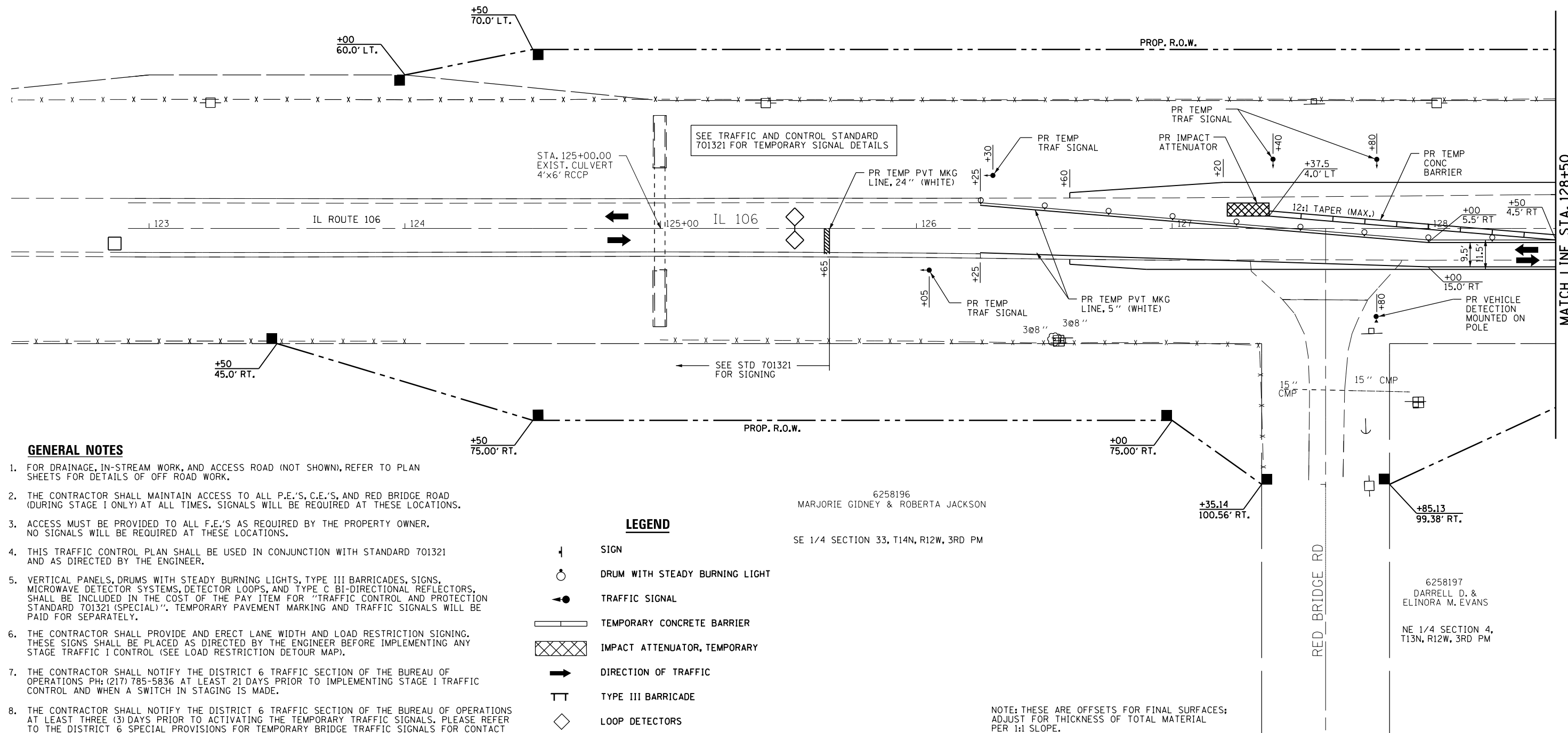
STAGE I SEQUENCE OF CONSTRUCTION

1. REMOVE EXISTING PAVEMENT WIDENING, INSTALL HMA BASE COURSE WIDENING 10" AS SHOWN ON THESE PLANS. UTILIZE TRAFFIC CONTROL & PROTECTION STANDARD 701326.
2. SET UP TEMPORARY TRAFFIC CONTROL USING THESE PLANS IN CONJUNCTION WITH TRAFFIC CONTROL & PROTECTION STANDARD 701321.
3. INSTALL TEMPORARY TRAFFIC SIGNALS AND LOOP DETECTORS AT LOCATIONS SHOWN ON THE PLANS.
4. PLACE TEMPORARY CONCRETE BARRIER AND PAVEMENT MARKING IN ACCORDANCE WITH THESE PLANS FOR STAGE I CONSTRUCTION.
5. REMOVE ANY CONFLICTING PAVEMENT MARKINGS, AND PLACE TEMPORARY CONCRETE BARRIER AND PAVEMENT MARKING IN ACCORDANCE WITH THESE PLANS FOR STAGE I CONSTRUCTION.
6. INSTALL SOIL PROTECTION SYSTEM PRIOR TO ANY EXCAVATION.
7. COMPLETE STAGE I CONSTRUCTION WORK, PAVEMENT REMOVAL, WIDENING, DRAINAGE WORK, BRIDGE APPROACH PAVEMENTS, AND STAGE I STRUCTURAL WORK AS SHOWN IN THESE PLANS. SEE MAINTENANCE OF TRAFFIC SECTIONS FOR BRIDGE STAGING DETAILS.
8. CONSTRUCT HMA BINDER COURSES AS SHOWN FOR TEMPORARY PROFILE.



SW 1/4 SECTION 34, T14N, R12W, 3RD PM

6258196
MARJORIE GIDNEY & ROBERTA JACKSON



GENERAL NOTES

1. FOR DRAINAGE, IN-STREAM WORK, AND ACCESS ROAD (NOT SHOWN), REFER TO PLAN SHEETS FOR DETAILS OF OFF ROAD WORK.
2. THE CONTRACTOR SHALL MAINTAIN ACCESS TO ALL P.E.'S, C.E.'S, AND RED BRIDGE ROAD (DURING STAGE I ONLY) AT ALL TIMES. SIGNALS WILL BE REQUIRED AT THESE LOCATIONS.
3. ACCESS MUST BE PROVIDED TO ALL F.E.'S AS REQUIRED BY THE PROPERTY OWNER. NO SIGNALS WILL BE REQUIRED AT THESE LOCATIONS.
4. THIS TRAFFIC CONTROL PLAN SHALL BE USED IN CONJUNCTION WITH STANDARD 701321 AND AS DIRECTED BY THE ENGINEER.
5. VERTICAL PANELS, DRUMS WITH STEADY BURNING LIGHTS, TYPE III BARRICADES, SIGNS, MICROWAVE DETECTOR SYSTEMS, DETECTOR LOOPS, AND TYPE C BI-DIRECTIONAL REFLECTORS, SHALL BE INCLUDED IN THE COST OF THE PAY ITEM FOR "TRAFFIC CONTROL AND PROTECTION STANDARD 701321 (SPECIAL)". TEMPORARY PAVEMENT MARKING AND TRAFFIC SIGNALS WILL BE PAID FOR SEPARATELY.
6. THE CONTRACTOR SHALL PROVIDE AND ERECT LANE WIDTH AND LOAD RESTRICTION SIGNING. THESE SIGNS SHALL BE PLACED AS DIRECTED BY THE ENGINEER BEFORE IMPLEMENTING ANY STAGE TRAFFIC I CONTROL (SEE LOAD RESTRICTION DETOUR MAP).
7. THE CONTRACTOR SHALL NOTIFY THE DISTRICT 6 TRAFFIC SECTION OF THE BUREAU OF OPERATIONS PH: (217) 785-5836 AT LEAST 21 DAYS PRIOR TO IMPLEMENTING STAGE I TRAFFIC CONTROL AND WHEN A SWITCH IN STAGING IS MADE.
8. THE CONTRACTOR SHALL NOTIFY THE DISTRICT 6 TRAFFIC SECTION OF THE BUREAU OF OPERATIONS AT LEAST THREE (3) DAYS PRIOR TO ACTIVATING THE TEMPORARY TRAFFIC SIGNALS. PLEASE REFER TO THE DISTRICT 6 SPECIAL PROVISIONS FOR TEMPORARY BRIDGE TRAFFIC SIGNALS FOR CONTACT INFORMATION.

LEGEND

- ⊥ SIGN
- DRUM WITH STEADY BURNING LIGHT
- TRAFFIC SIGNAL
- ▬ TEMPORARY CONCRETE BARRIER
- ▨ IMPACT ATTENUATOR, TEMPORARY
- ➔ DIRECTION OF TRAFFIC
- TT TYPE III BARRICADE
- ◇ LOOP DETECTORS

NOTE: THESE ARE OFFSETS FOR FINAL SURFACES; ADJUST FOR THICKNESS OF TOTAL MATERIAL PER 1:1 SLOPE.

FILE NAME =	USER NAME = laughlinr1	DESIGNED - E.R.O.	REVISED -
et:\pw\work\p1dot\laughlinr1\1d2238533\0672891-sh-t-mot04.dgn		DRAWN - R.A.W.	REVISED -
	PLOT SCALE = 40.0000' / in.	CHECKED - J.S.A.	REVISED -
	PLOT DATE = Aug-26-2010 11:17:42AM	DATE -	REVISED -

STATE OF ILLINOIS
DEPARTMENT OF TRANSPORTATION

MOT PLAN (STAGE I)
STA. 124 + 70 TO STA. 128 + 50

SCALE: SHEET NO. OF SHEETS STA. TO STA.

F.A.P. RTE.	SECTION	COUNTY	TOTAL SHEETS	SHEET NO.
566	1(B-2)	SCOTT	77	16
CONTRACT NO. 72B91				
FED. ROAD DIST. NO. 6 ILLINOIS FED. AID PROJECT				