

NW 1/4 SECTION 3, T13N, R12W, 3RD PM

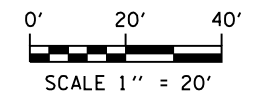
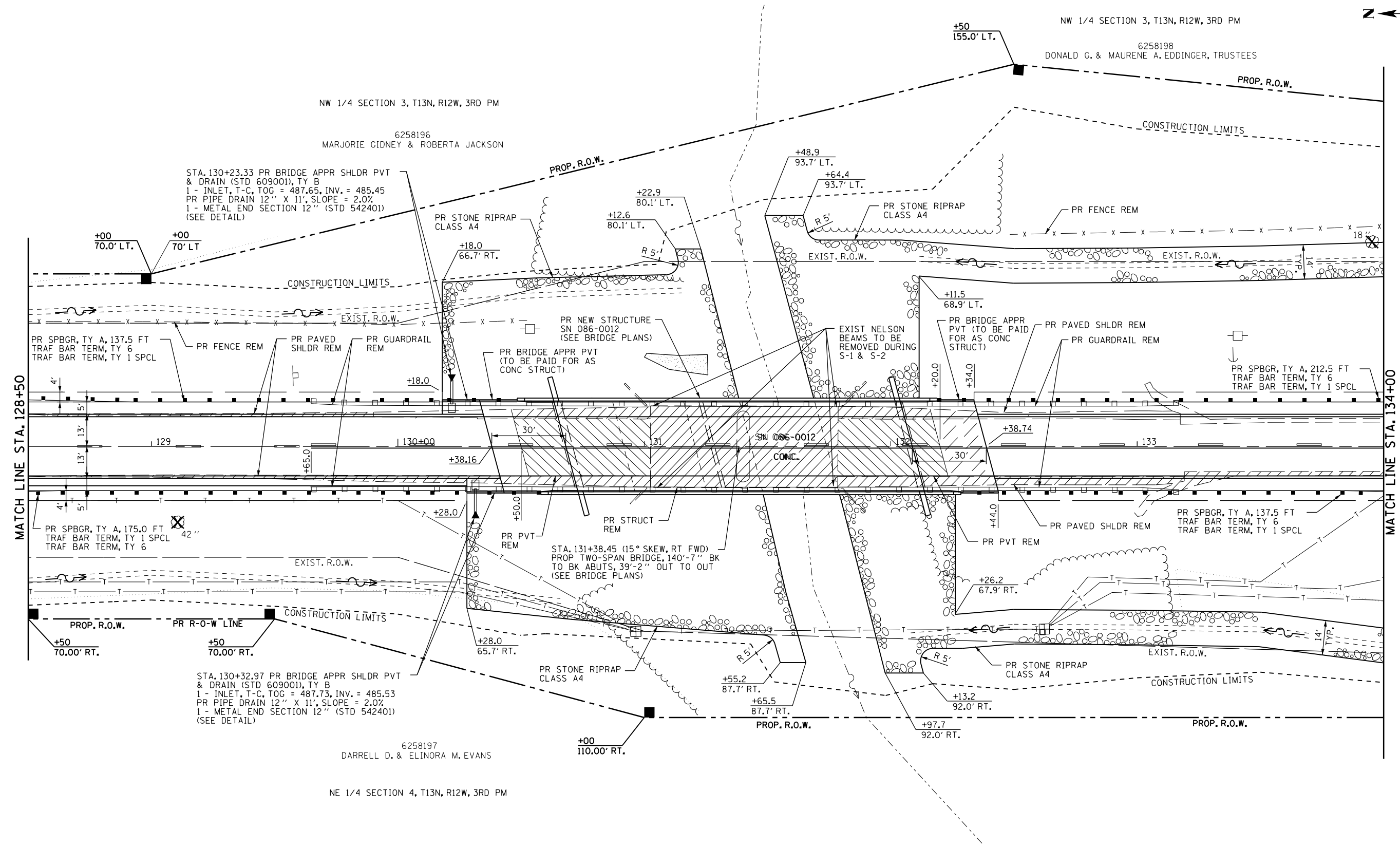
6258198
DONALD G. & MAURENE A. EDDINGER, TRUSTEES

NW 1/4 SECTION 3, T13N, R12W, 3RD PM

6258196
MARJORIE GIDNEY & ROBERTA JACKSON

6258197
DARRELL D. & ELINORA M. EVANS

NE 1/4 SECTION 4, T13N, R12W, 3RD PM



FILE NAME = c:\pwork\pwork\laughlin\1\0238533\062891-sh-t-PLN02.dgn	USER NAME = laughlin1	DESIGNED - E.R.O.	REVISED -	STATE OF ILLINOIS DEPARTMENT OF TRANSPORTATION	PLAN SHEET STA. 128 + 50 TO STA. 134 + 00			F.A.P. RTE. 566	SECTION 1(B-2)	COUNTY SCOTT	TOTAL SHEETS 77	SHEET NO. 24
	PLOT SCALE = 40.0000' / in.	CHECKED - J.S.A.	REVISED -		SCALE:	SHEET NO. OF SHEETS	STA. TO STA.	CONTRACT NO. 72B91				
PLOT DATE = Aug-26-2010 11:18:23AM	DATE -	DATE -	REVISED -	FED. ROAD DIST. NO. 6 ILLINOIS FED. AID PROJECT								