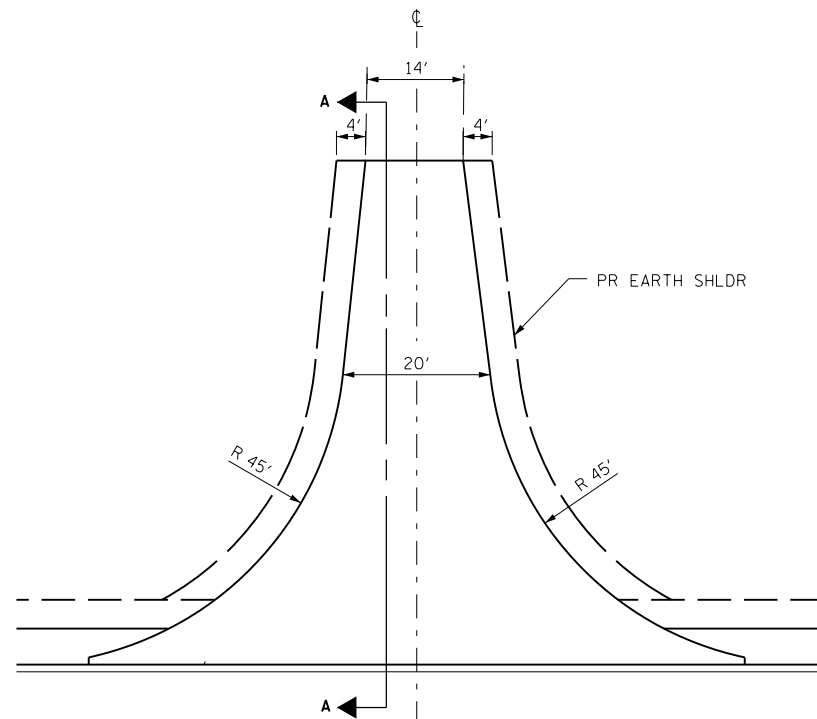
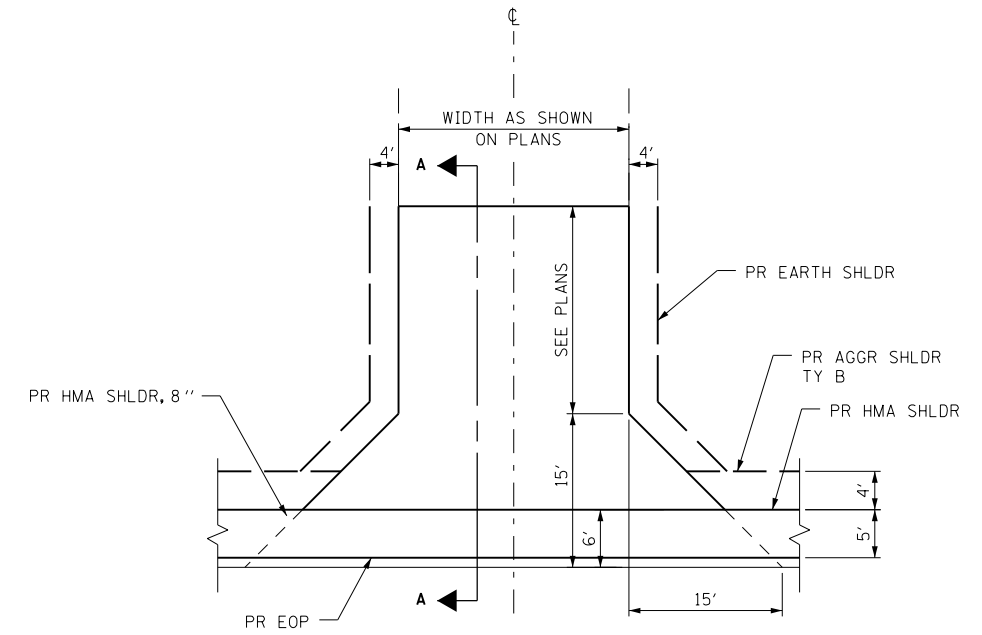


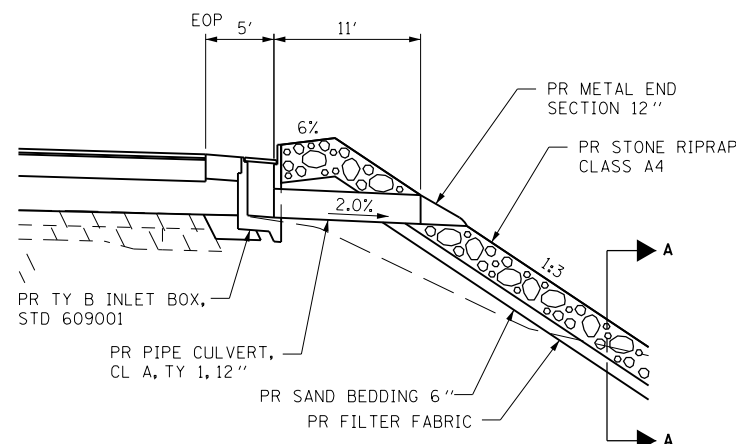
**FIELD ENTRANCE
DETAILS
PLAN VIEW**



**SIDEROAD DETAILS
RED BRIDGE RD.
PLAN VIEW**

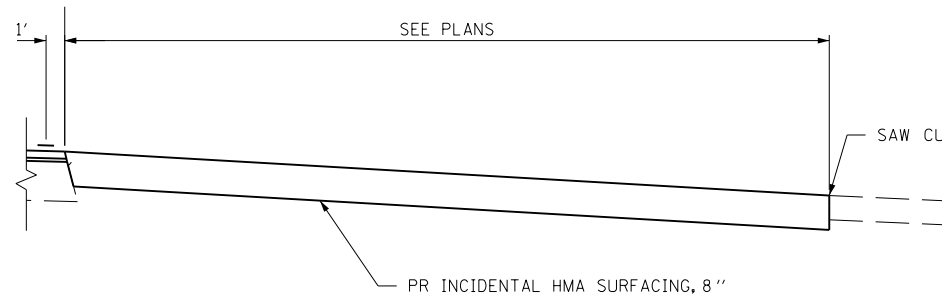


**COMMERCIAL AND PRIVATE
ENTRANCE DETAILS
PLAN VIEW**

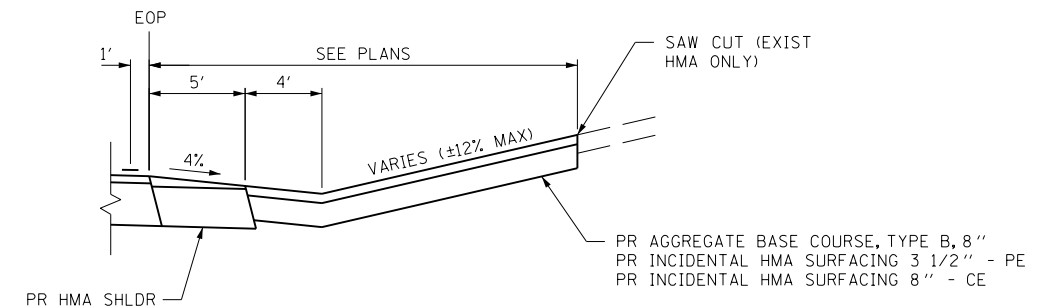


**APPROACH SHOULDER
DRAIN DETAIL**

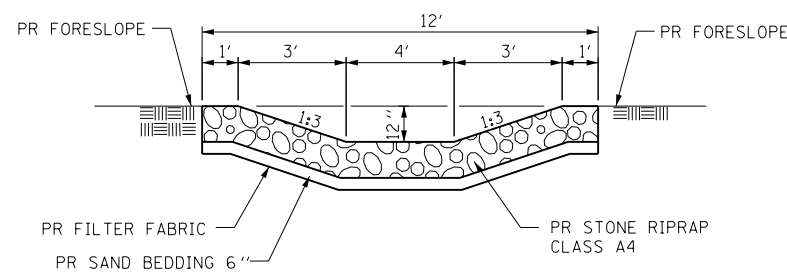
STA. 130+23.33 LT
STA. 130+32.97 RT



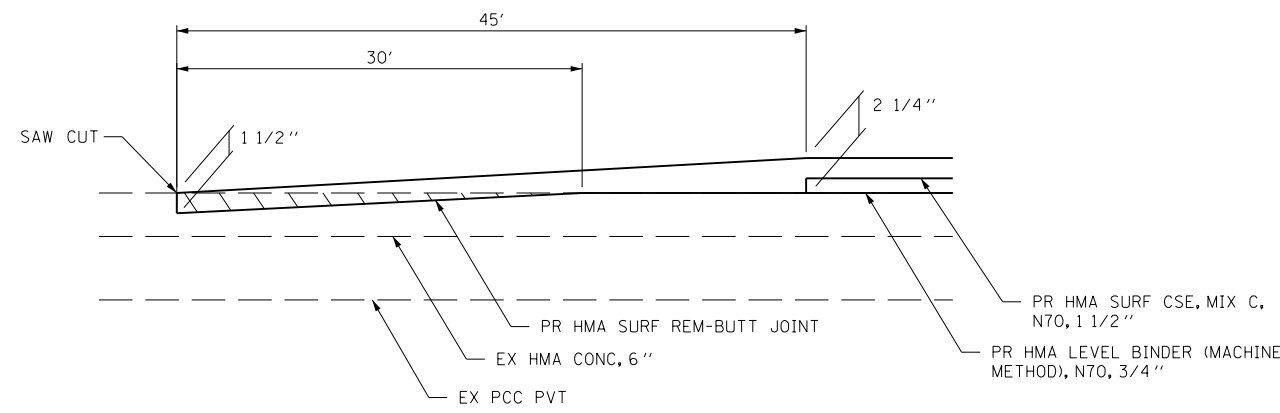
SECTION A-A



SECTION A-A



SECTION A-A



BUT JOINT DETAIL

STA. 124+70 TO STA. 125+15
STA. 138+05 TO STA. 138+50

GENERAL NOTES:

THE RESIDENT ENGINEER WILL DETERMINE THE EXACT TYPE OF IMPROVEMENT TO BE COMPLETED FOR ALL ENTRANCES, SIDEROADS AND MAILBOX TURNOUTS ON THIS PROJECT.

BITUMINOUS CONCRETE REQUIRED TO CONSTRUCT THE ENTRANCES SHALL BE IN ACCORDANCE WITH THE APPLICABLE PORTIONS OF SECTION 406 AND 408 OF THE STANDARD SPECIFICATIONS AND AS DIRECTED BY THE ENGINEER.

WHEN THE BITUMINOUS CONCRETE PROPOSED FOR THE IMPROVEMENT IS THICKER THAN 75 mm (3 INCHES) AND REQUIRE PLACEMENT IN MORE THAN ONE LIFT. THE BOTTOM LIFT(S) SHALL MEET THE REQUIREMENTS OF BITUMINOUS BASE COURSE IN SECTION 406 OF THE STANDARD SPECIFICATIONS AND THE TOP LIFT OF 50 mm (2 INCHES) SHALL MEET THE REQUIREMENTS OF BITUMINOUS SURFACE COURSE, SUPERPAVE.

FILE NAME =	USER NAME = laughl1n1	DESIGNED - E.R.O.	REVISED -	STATE OF ILLINOIS DEPARTMENT OF TRANSPORTATION	ENTRANCE, SIDEROAD, BUTT JOINT, AND APPROACH SHOULDER DRAIN DETAILS	F.A.P. RTE.	SECTION	COUNTY	TOTAL SHEETS	SHEET NO.	
et:\pw\work\p\midot\laughl1n1\d0238533\0672891_sht_details01.dgn	PLOT SCALE = 40.0000' / in.	DRAWN - R.A.W.	REVISED -			566	1(B-2)	SCOTT	77	61	
	PLOT DATE = Aug-26-2010 11:19:42AM	CHECKED - J.S.A.	REVISED -			CONTRACT NO. 72B91					
		DATE -	REVISED -			FED. ROAD DIST. NO. 6	ILLINOIS	FED. AID PROJECT			
SCALE:						SHEET NO.	OF	SHEETS	STA.	TO STA.	