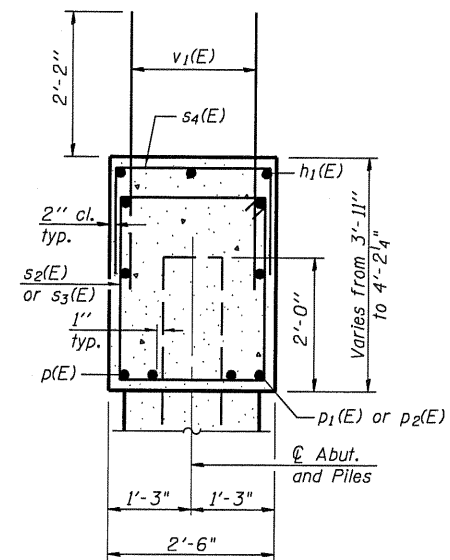
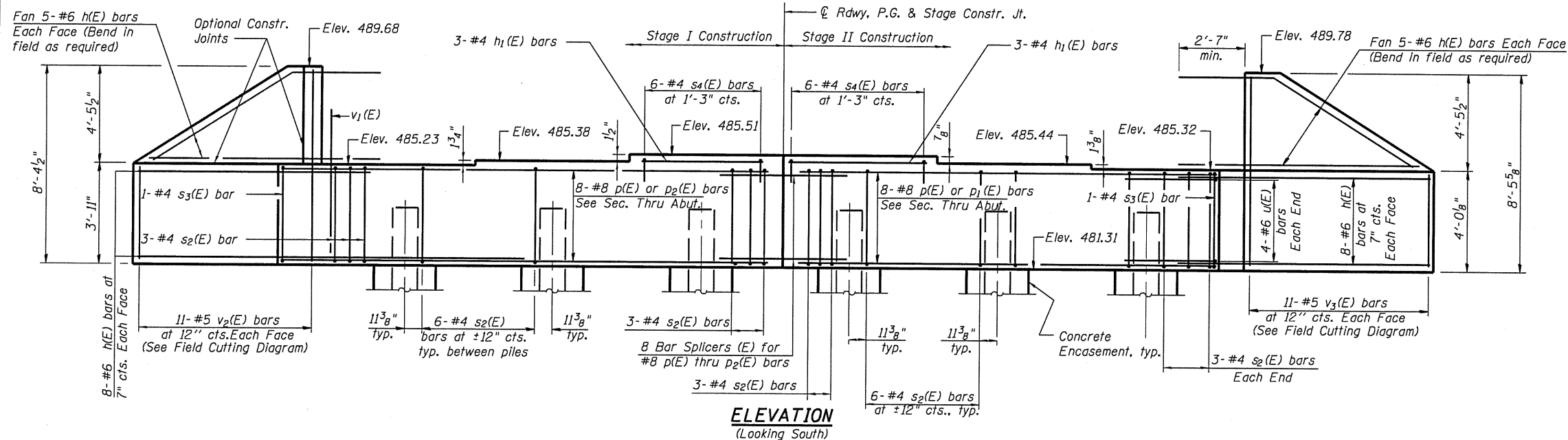


STATE OF ILLINOIS
DEPARTMENT OF TRANSPORTATION

Notes:
Pour steps monolithically with cap.



SEC. THRU ABUT.

BILL OF MATERIAL

Bar	No.	Size	Length	Shape
h(E)	52	#6	13'-5"	—
h1(E)	6	#4	6'-5"	—
p(E)	16	#8	20'-0"	—
p1(E)	8	#8	19'-3"	—
p2(E)	8	#8	20'-7"	—
s2(E)	36	#4	12'-3"	□
s3(E)	2	#4	12'-5"	□
s4(E)	12	#4	6'-6"	□
u(E)	8	#6	9'-5"	└
v1(E)	77	#5	4'-4"	—
v2(E)	11	#5	11'-9"	—
v3(E)	11	#5	11'-11"	—
Structure Excavation		Cu. Yd.	114	
Concrete Structures		Cu. Yd.	20.0	
Reinforcement Bars, Epoxy Coated		Pound	3840	
Furnishing - Piles, HP 12x53		Foot	235	
Driving Piles		Foot	235	
Test Pile, HP 12x53		Each	1	
Concrete Encasement		Cu. Yd.	2.1	

For details of Bar Splicers, see sheet 24 of 26.
For details of piles and Concrete Encasement, see sheet 23 of 26.

SOUTH ABUTMENT
STRUCTURE NO. 086-0505

SHEET NO. 19 of 26 SHEETS	F.A.P. RTE.	SECTION	COUNTY	TOTAL SHEETS	SHEET NO.
	566	1(B-2)	SCOTT	77	46
FED. ROAD DIST. NO.			ILLINOIS	FED. AID PROJECT	
			CONTRACT NO. 72B91		

PILE DATA

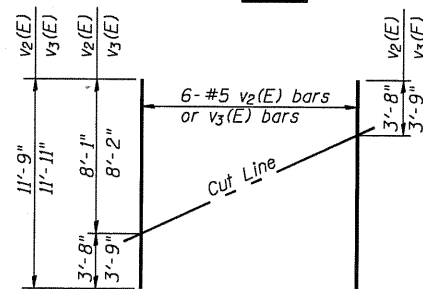
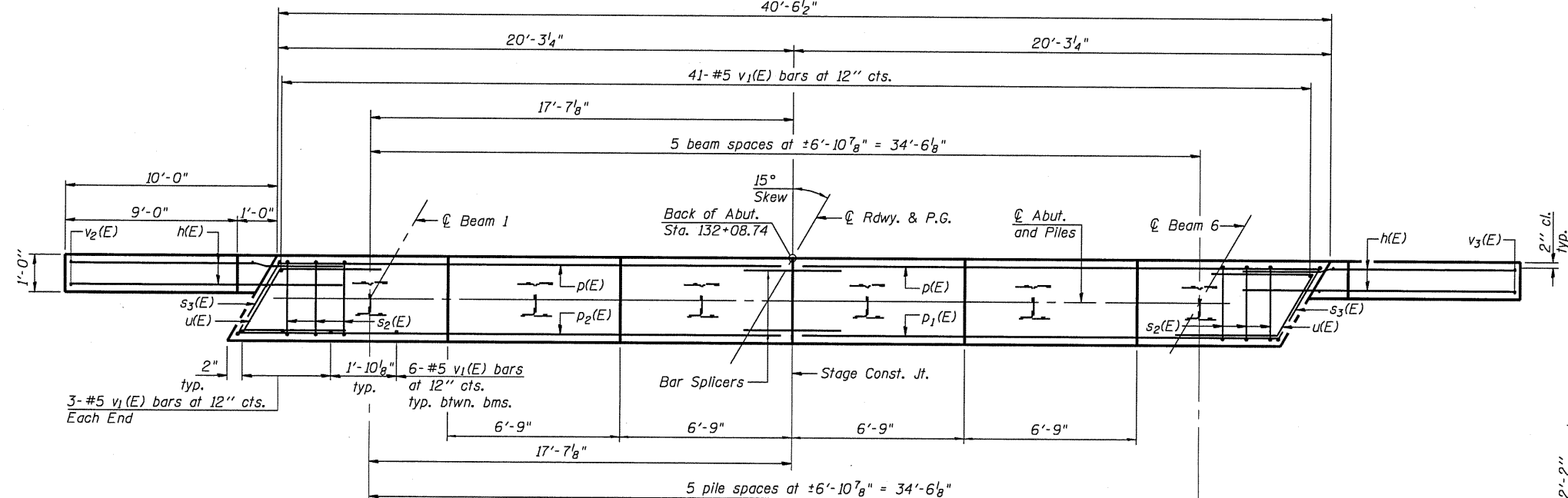
Type: HP 12x53
Nominal Required Bearing: 419 kips
Factored Resistance Available: 214 kips
Est. Length: 47 ft.
No. Production Piles: 5 piles
No. Test Piles: 1 pile

Piles shall be driven through 18" diameter precored holes extending to elevation 475' according to Article 512.09(c) of the Standard Specifications. Cost included in driving piles.

DESIGNED	C.M.W.
CHECKED	J.S.A.
DRAWN	T.J.W.
CHECKED	C.M.W.

HOELSCHER ENGINEERING
Fairview Heights, IL
Springfield, IL
Champaign, IL

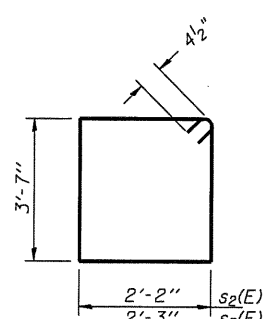
PLAN



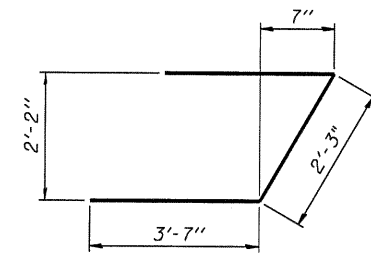
FIELD CUTTING DIAGRAM

Order v2(E) & v4(E) full length. Cut as shown and use remainder of bars in opposite face.

BARS s2(E) & s3(E)



BAR u(E)



BAR s4(E)

