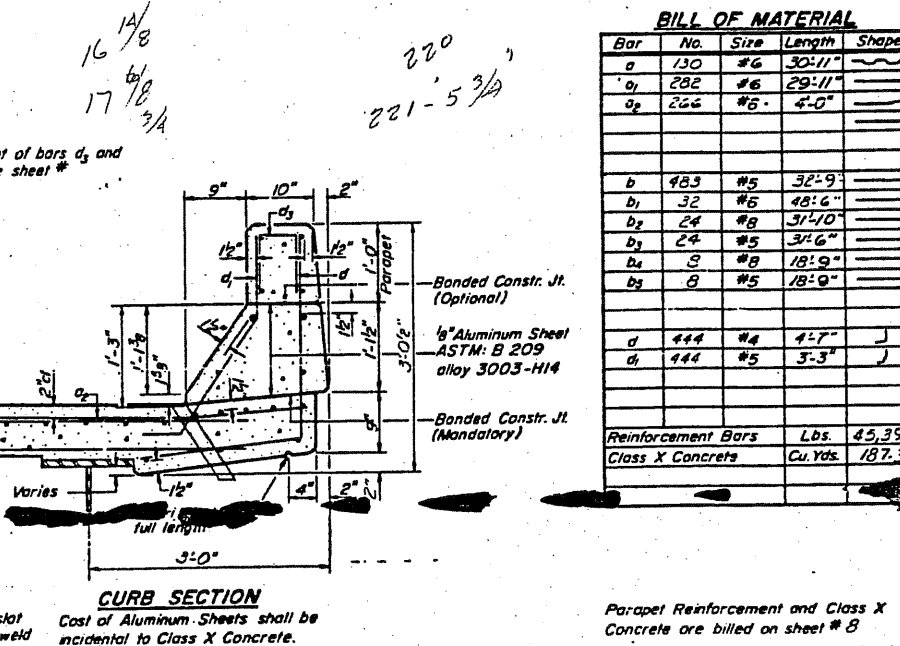
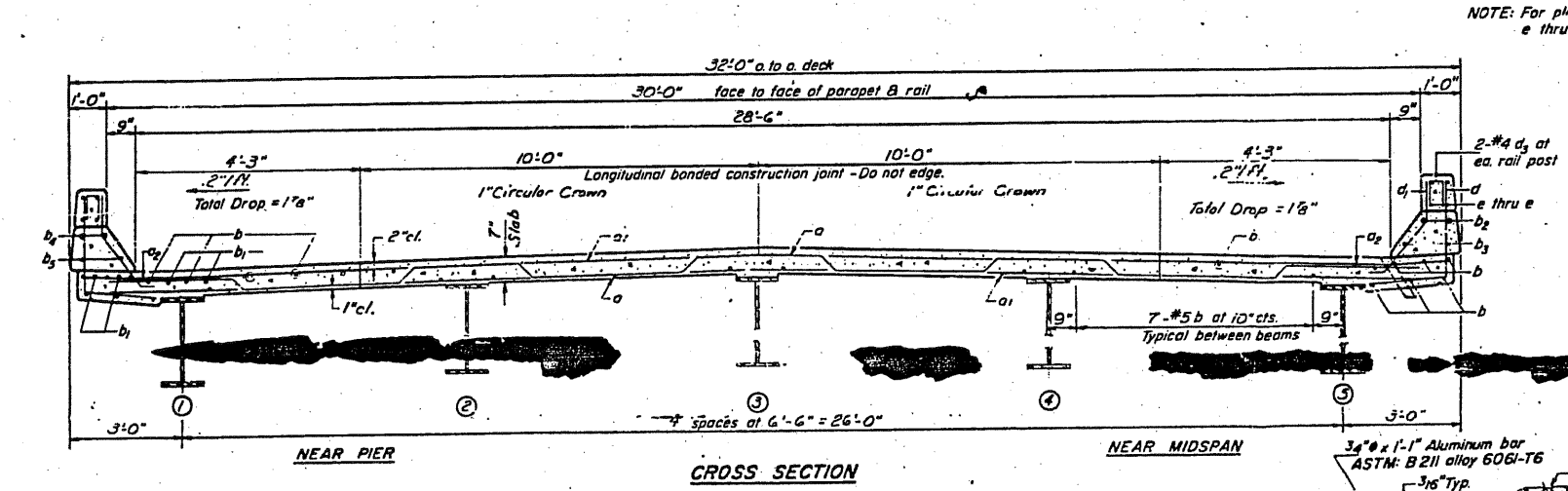
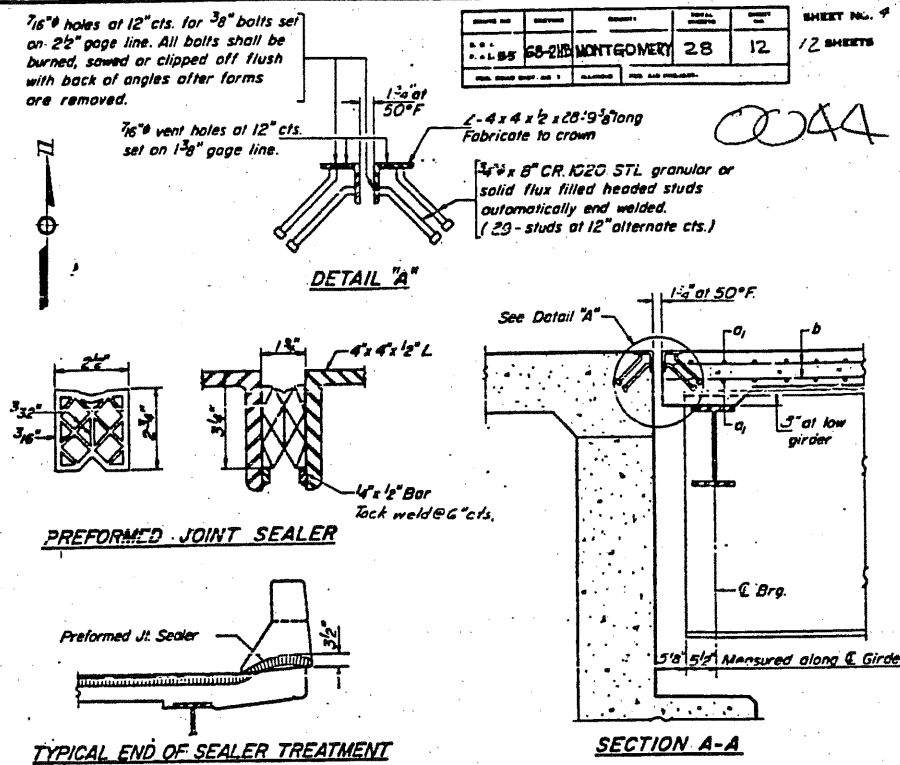
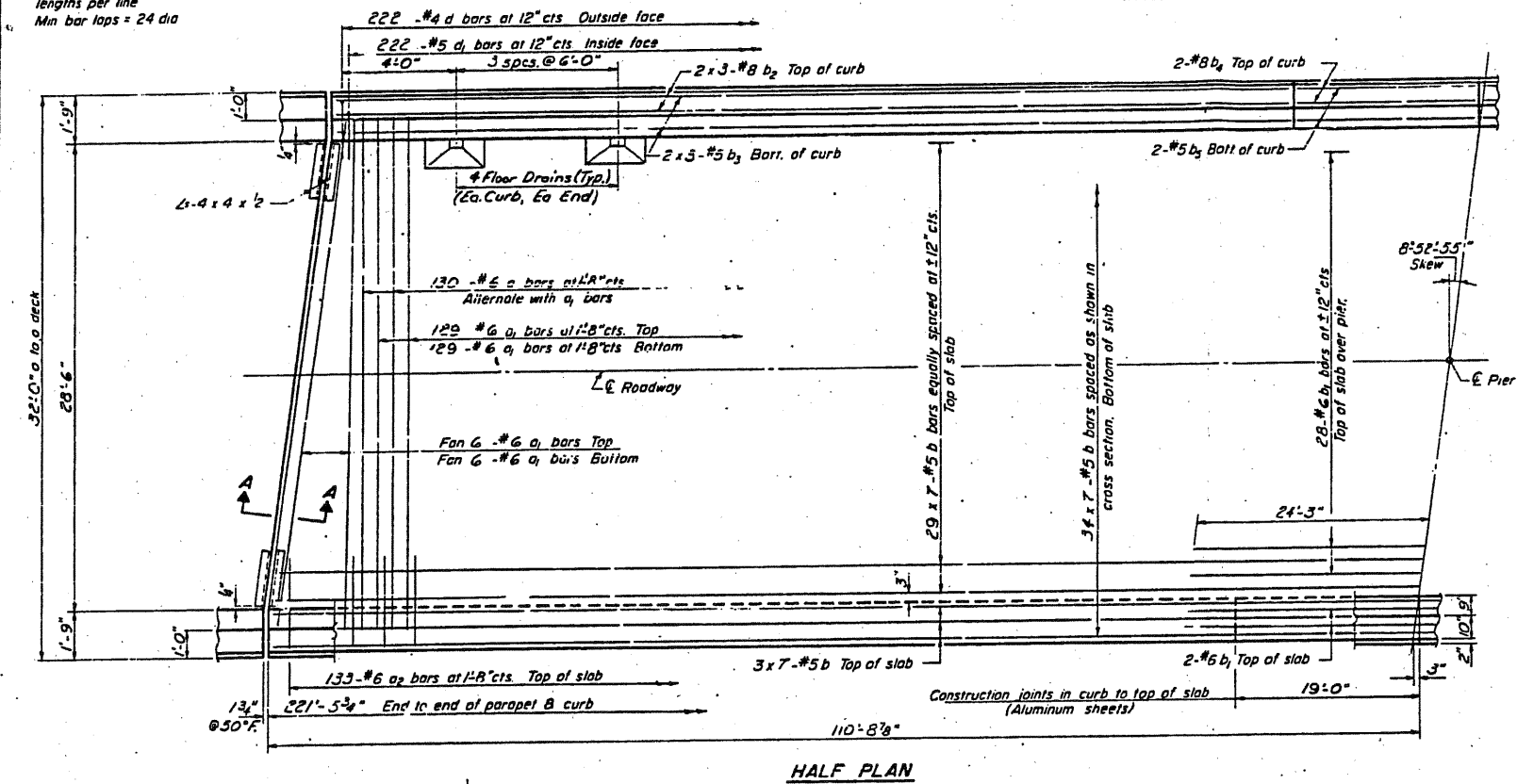


NOTE:  
Bars indicated thus 20 x 3-#5 etc.  
indicates 20 lines of bars with 3  
lengths per line.  
Min bar laps = 24 dia

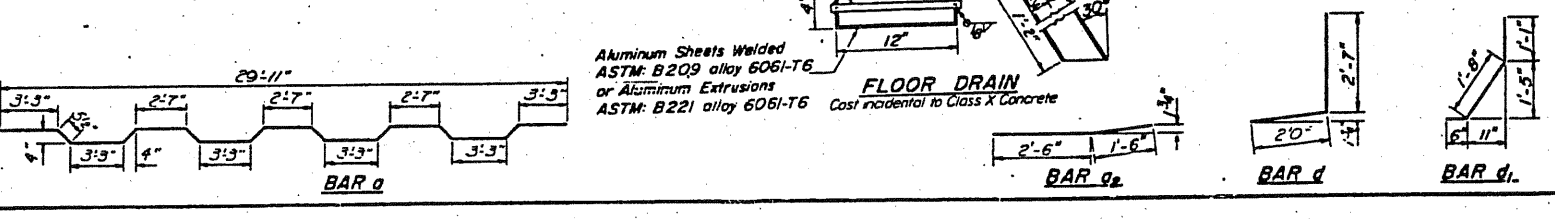
PROJECT NO.	68-218	MONTGOMERY	28	12	SHEET NO.	4
TOTAL SHEETS					12 SHEETS	



**BILL OF MATERIAL**

Bar	No.	Size	Length	Shape
a	130	#6	30'-11"	
a <sub>1</sub>	232	#6	29'-11"	
a <sub>2</sub>	222	#6	4'-0"	
b	423	#5	32'-9"	
b <sub>1</sub>	32	#5	48'-6"	
b <sub>2</sub>	24	#8	3'-4"	
b <sub>3</sub>	24	#5	3'-6"	
b <sub>4</sub>	8	#8	18'-9"	
b <sub>5</sub>	8	#5	18'-9"	
d	444	#4	4'-7"	
d <sub>1</sub>	444	#5	3'-3"	
Reinforcement Bars				Lbs. 45,390
Class X Concrete				Cu Yds. 187.3

DESIGNED *[Signature]*  
 CHECKED *[Signature]*  
 DRAWN S.E. Lindsey  
 CHECKED J.V.K.  
 EXAMINED *[Signature]*  
 PASSED *[Signature]*  
 MAY 15 1970



**MAIN SPAN SUPERSTRUCTURE**  
 FAI RT.55 SEC.68-2HB  
 MONTGOMERY COUNTY  
 STA. 1812+60.08 (FAI 55)

FOR INFORMATION ONLY

EXISTING PLANS, SN 068-0044  
 VARIOUS ROUTES  
 D6REHAB BDGE PAINTING 2011  
 MONT, SANG, SCHUY COUNTIES