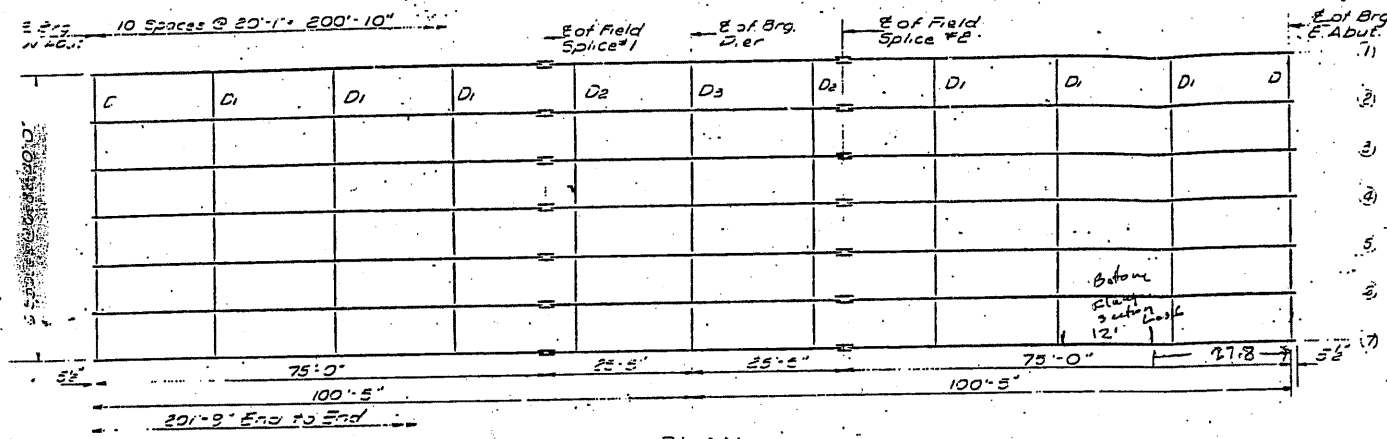
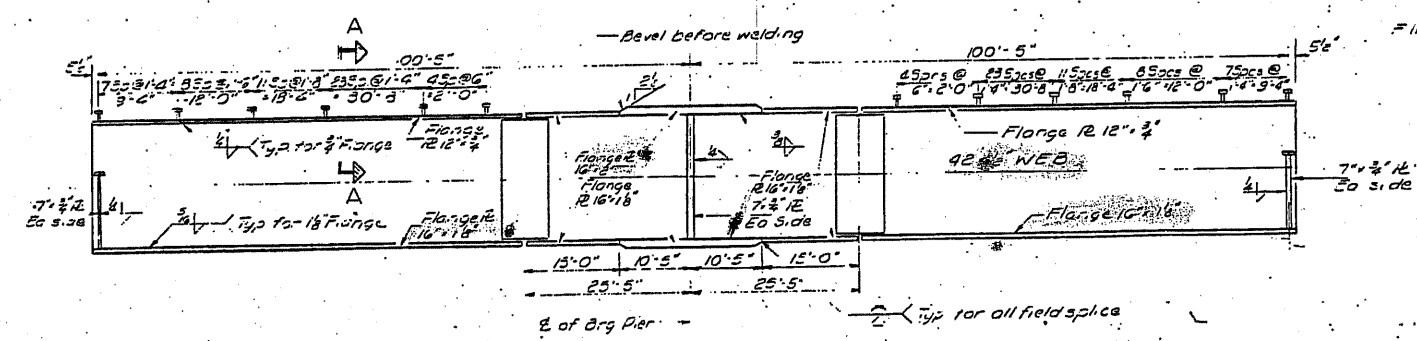


STATE OF ILLINOIS
DEPARTMENT OF PUBLIC WORKS & BUILDINGS
DIVISION OF HIGHWAYS

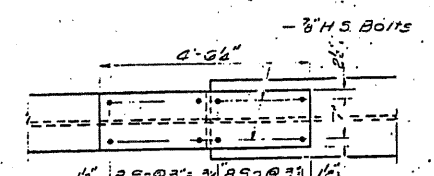
SHEET NO. 5				
10 SHEETS				
47	028A	Schuyler	27	10



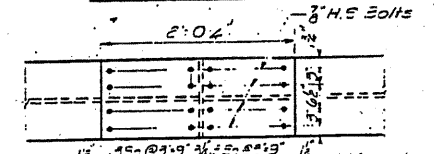
PLAN



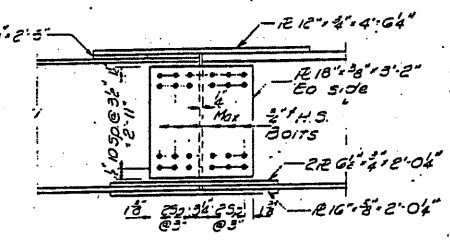
ELEVATION



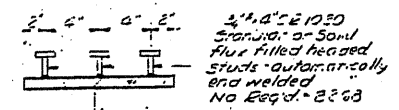
TOP FLANGE PLAN



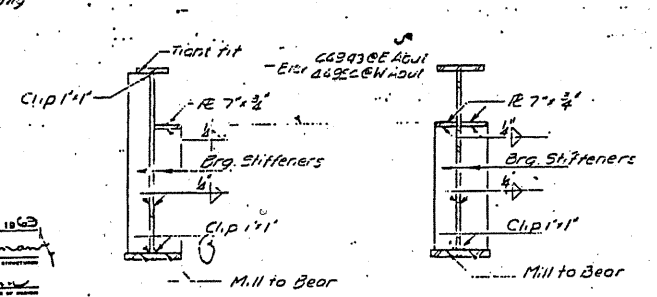
BOTTOM FLANGE PLAN



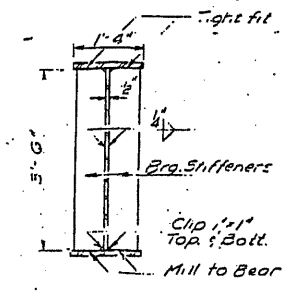
SPLICE PLATE DETAIL



SEC A-A



SEC AT ABUTMENTS



SEC AT PIER

DESIGNED	Harbel Sun	EXAMINED	SEPT. 23 1963
CHECKED	C. Keranick	PASSED	W. J. ...
DRAWN	F. Mercado	APPROVED	Richard J. ...
CHECKED	A. K.		

085-0005

STRUCTURAL STEEL
S.B. RTE 103 SEC. 102BR
SCHUYLER COUNTY
STA 367+83.95

FOR INFORMATION ONLY

EXISTING PLANS, SN 085-0005
VARIOUS ROUTES
D6REHAB BDGE PAINTING 2011
MONT, SANG, SCHUY COUNTIES