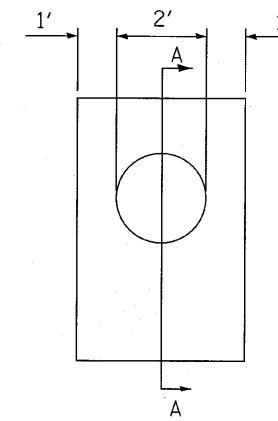
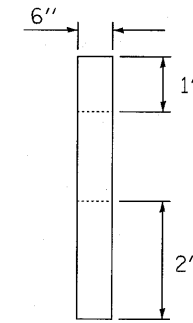


THRUST BLOCK DETAIL

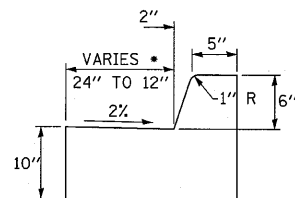


CONCRETE ANCHOR



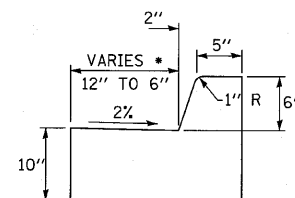
SECTION A-A

GUTTER FLAG WIDTH VARIES.



STA 287+67.11 TO 287+98.19 LEFT

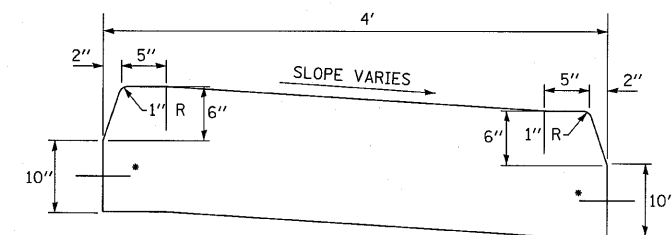
GUTTER FLAG WIDTH VARIES TO TIE INTO EXISTING CURB.



STA 290+22.52 TO 290+32.43 LEFT
STA 290+86.94 TO 290+89.66 RIGHT

**COMBINATION CONCRETE CURB & GUTTER,
TYPE B-6.12**

* VARYING GUTTER FLAG CURB PAID FOR AS COMBINATION CONCRETE CURB & GUTTER TYPE B-6.12.



* TIE BARS PER STD 420001

CONCRETE MEDIAN, TYPE SB (SPECIAL)

JOINTING OF MEDIAN SHALL CONFORM TO SEC. 606.09 OF THE STANDARD SPECIFICATIONS FOR ROAD AND BRIDGE CONSTRUCTION

LAST SAVED = 8/9/2010
PLOT TABLE = V:\h\17.res
PLOT DATED = 8/9/2010 10:22:01 AM

FILE NAME =	USER NAME = beriechmann	DESIGNED SRD	REVISED -
1:\07078\cad\1\plans\097-D876882-Sht-D.tbl	DRAWN NDB	CHECKED SRD	REVISED -
PLOT SCALE = 5.0002' / IN.	DATE -	REVISED -	
PLOT DATE = 8/9/2010 10:22:01 AM			

STATE OF ILLINOIS
DEPARTMENT OF TRANSPORTATION

HORNER &
SHIRIN, INC
ENGINEERS

DETAILS
IL 3

SCALE: NONE SHEET NO. 2 OF 3 SHEETS STA. TO STA.

F.A.P. RTE.	SECTION	COUNTY	TOTAL SHEETS	SHEET NO.
312	64-1VBR	ST. CLAIR	259	51
FED. ROAD DIST. NO. ILLINOIS FED. AID PROJECT			CONTRACT NO. 76882	