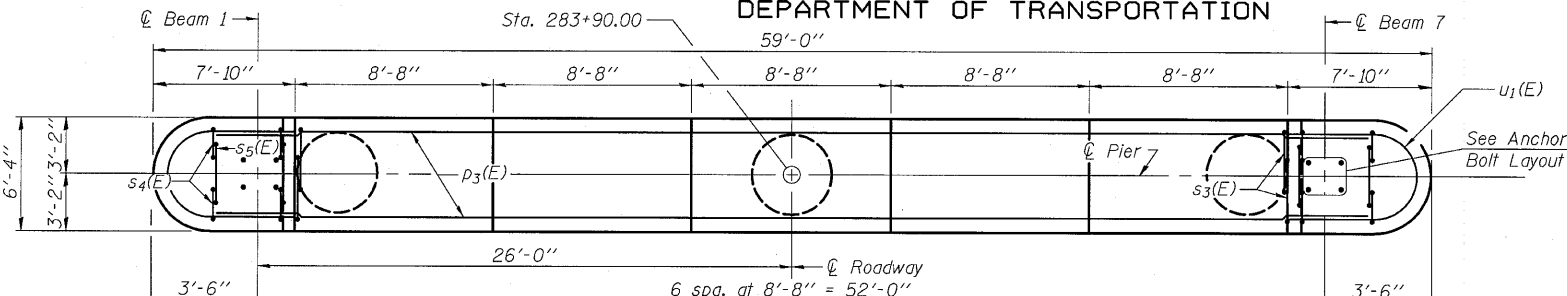
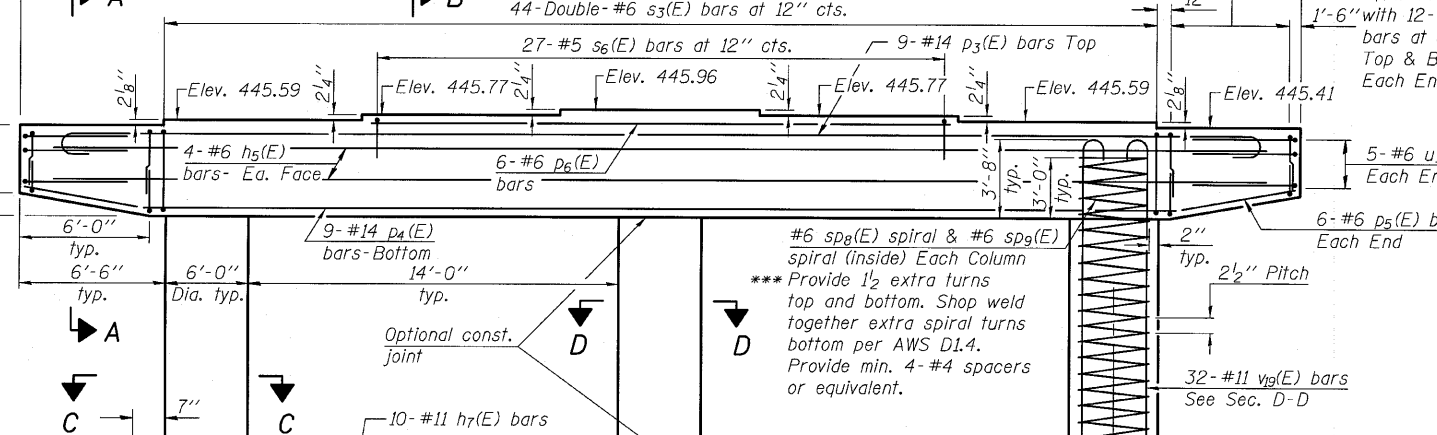


STATE OF ILLINOIS
DEPARTMENT OF TRANSPORTATION

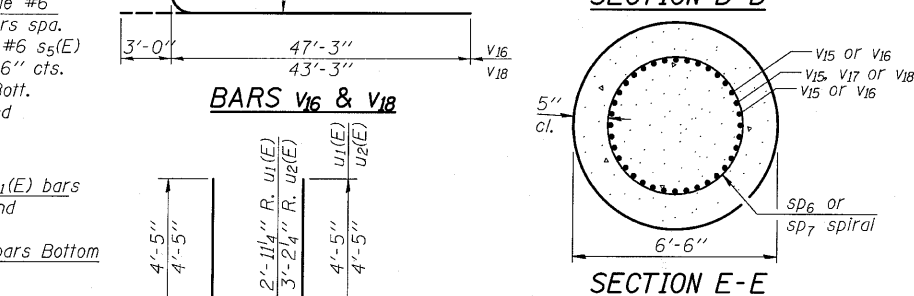
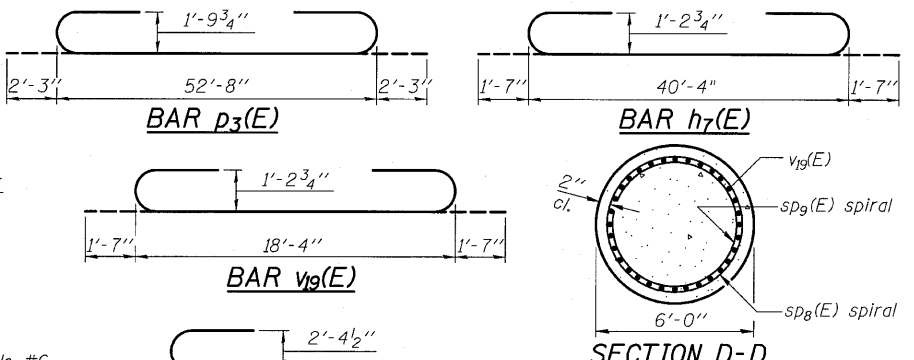
Sta. 283+90.00



TOP PLAN



ELEVATION
(Looking South)

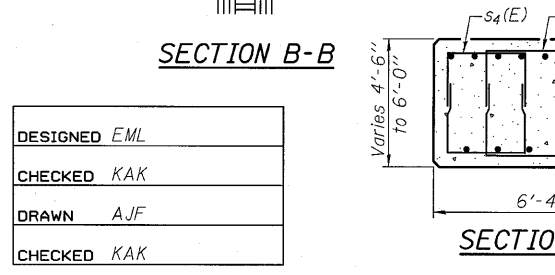
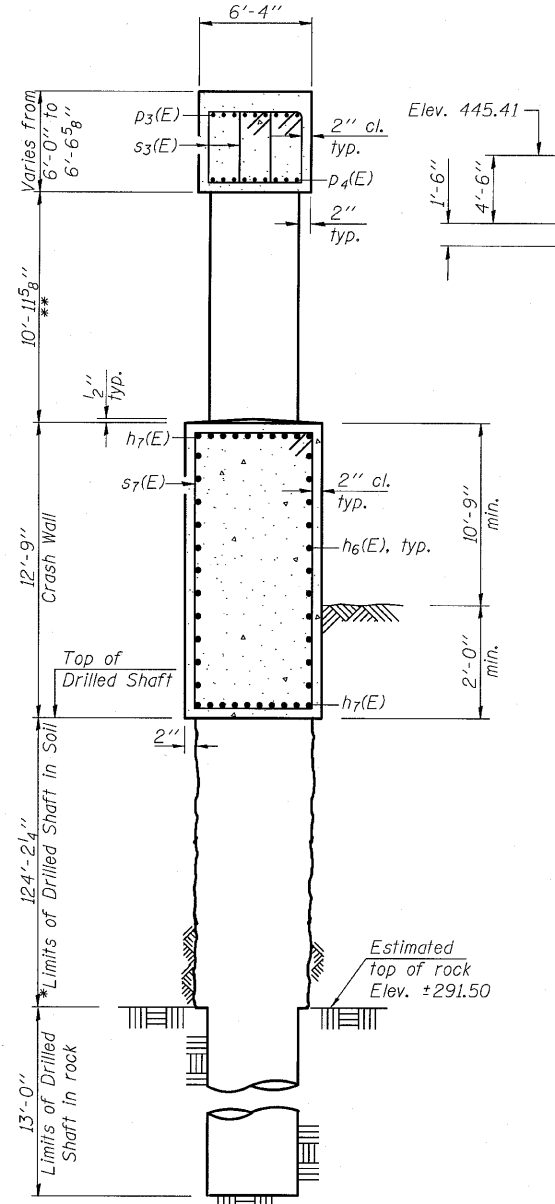


BILL OF MATERIAL

Bar	No.	Size	Length	Shape
h5(E)	8	#6	52'-8"	—
h6(E)	22	#7	40'-4"	—
h7(E)	20	#11	43'-6"	—
p3(E)	9	#14	57'-2"	—
p4(E)	9	#14	47'-0"	—
p5(E)	12	#6	6'-0"	—
p6(E)	6	#6	25'-8"	—
s3(E)	88	#6	20'-8"	□
s4(E)	96	#6	11'-11"	□
s5(E)	48	#6	13'-1"	□
s6(E)	27	#5	10'-0"	□
s7(E)	54	#6	39'-2"	□
sp6	3	#6	130'-6"	—
sp7	3	#6	9'-9"	—
sp8(E)	3	#6	17'-0"	—
sp9(E)	3	#6	17'-0"	—
u1(E)	10	#6	18'-1"	—
u2(E)	26	#6	18'-10"	—
v15	162	#18	47'-3"	—
v16	54	#18	50'-3"	—
v17	54	#18	51'-3"	—
v18	54	#18	46'-3"	—
v19(E)	96	#11	21'-6"	—
Structure Excavation			Cu. Yd.	41
Concrete Structures			Cu. Yd.	272.8
Reinforcement Bars			Pound	237,170
Reinforcement Bars, Epoxy Coated			Pound	46,440
Drilled Shaft in Soil			Cu. Yd.	457.9
Drilled Shaft in Rock			Cu. Yd.	40.8
Mechanical Splicers			Each	216

Cast steps monolithically with cap.
Space cap reinforcement to miss anchor bolts.
**** Length is height of spiral.
Bars indicated thus 18 x 2-#18 etc. indicates 18 lines of bars with 2 lengths per line.

PIER 3
STRUCTURE NO. 082-0038



DESIGNED	EML
CHECKED	KAK
DRAWN	AJF
CHECKED	KAK

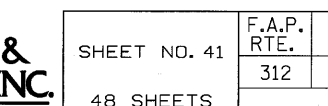
* The quantities and reinforcement detailing are based on the top of shaft and the estimated top of rock elevations shown and may change based on the actual top of rock encountered at each shaft and the final top of shaft elevation.
** Splicing of reinforcement will not be allowed in this region.
*** Allowable substitution: Provide 1/2 extra turns top and bottom with 135° standard hook into core at ends of spiral.

18 Mechanical Splicers for #18 v15 bars and #18 v18 bars See Sec. E-E
18-#18 v15 bars (space bwn. v15 bars) See Sec. E-E
#6 sp7 spiral Each Shaft
*** Provide 1/2 extra turns top and bottom. Shop weld together extra spiral turns bottom per AWS D1.4. Provide min. 4-#4 spacers or equivalent.
18-#18 v17 bars (space bwn. v15 bars) See Sec. E-E
#6 sp6 spiral Each Shaft
*** Provide 1/2 extra turns top and bottom. Shop weld together extra spiral turns bottom per AWS D1.4. Provide min. 4-#4 spacers or equivalent.
**** 18 Mechanical Splicers for #18 v15 bars and #18 v17 bars

BARS s4(E), s5(E) & s6(E)

BARS s3(E) & s7(E)

ANCHOR BOLT LAYOUT



HORNER & SHIFRIN, INC. ENGINEERS

SHEET NO. 41	F.A.P. RTE. 312	SECTION 64-1VBR	COUNTY ST. CLAIR	TOTAL SHEETS 259	SHEET NO. 93
48 SHEETS			CONTRACT NO. 76882		
ILLINOIS FED. AID PROJECT					