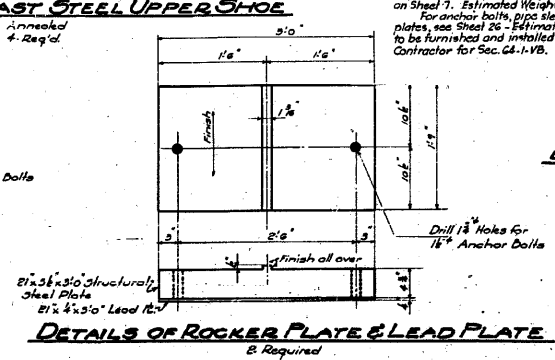
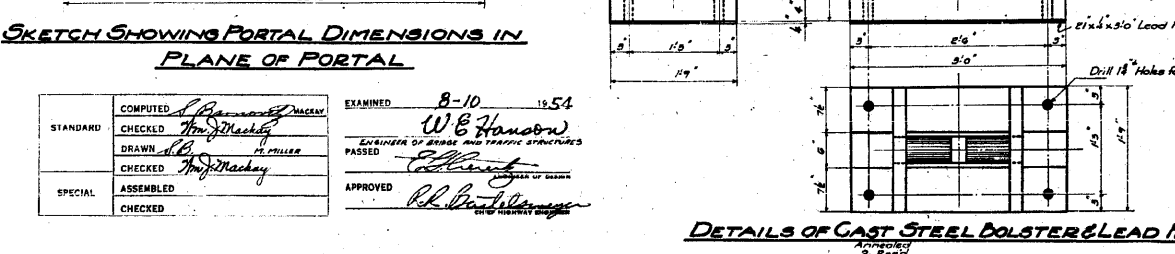
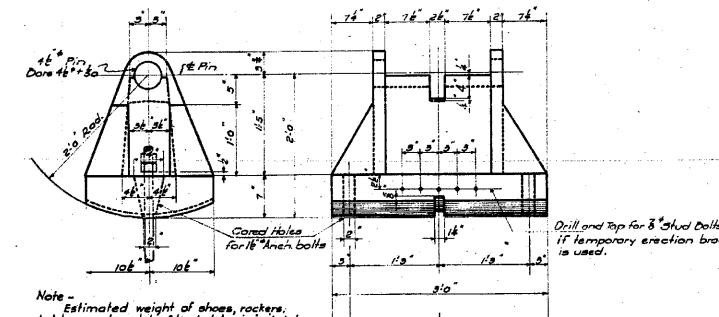
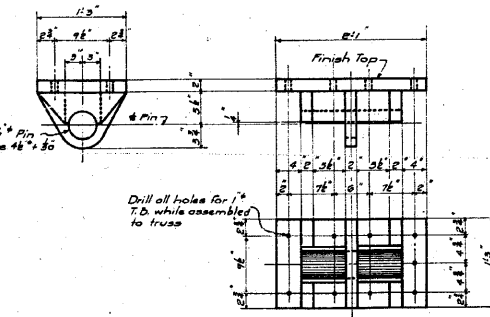
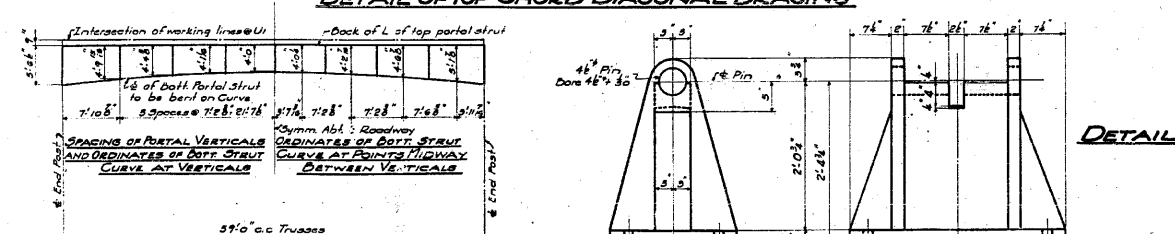
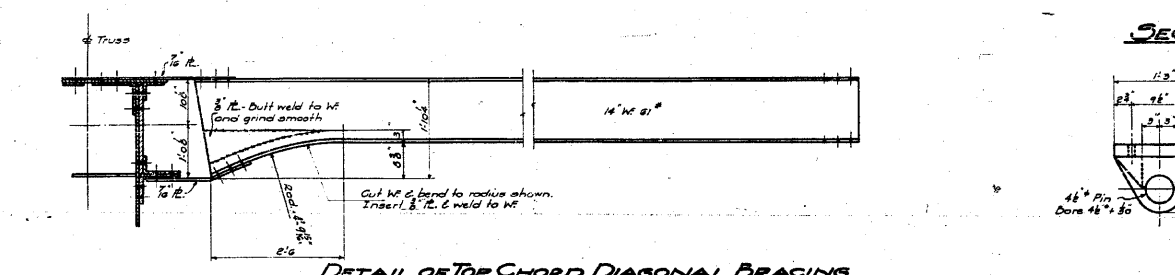
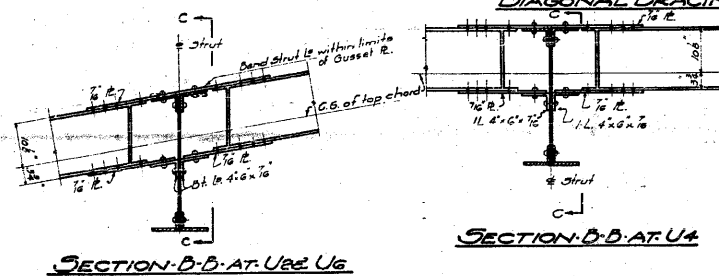
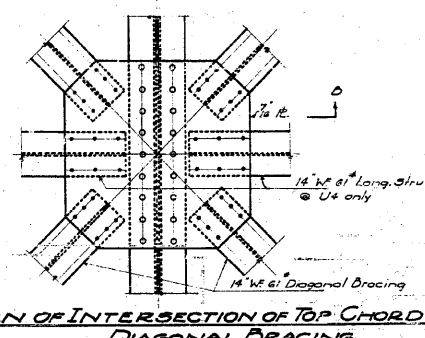
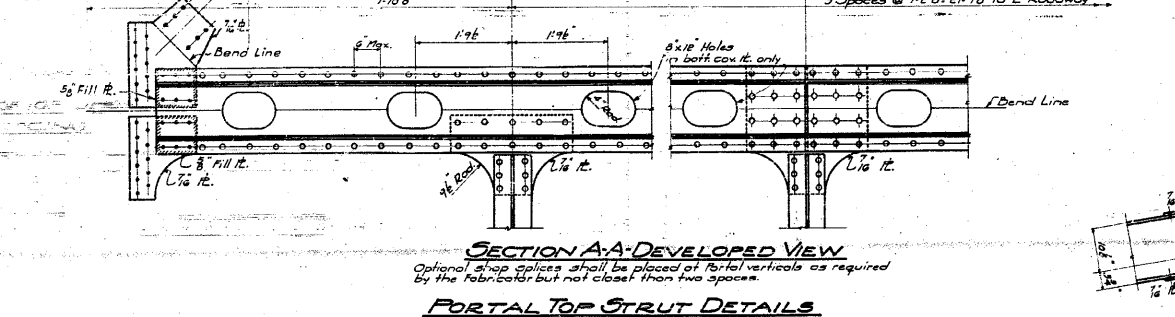
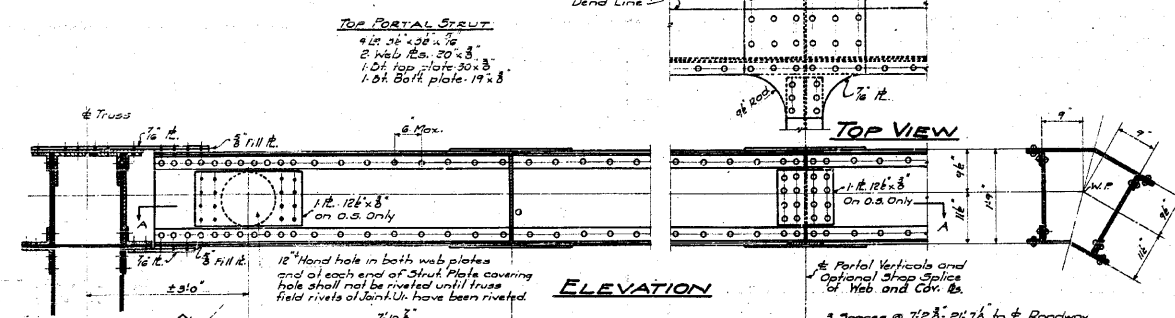


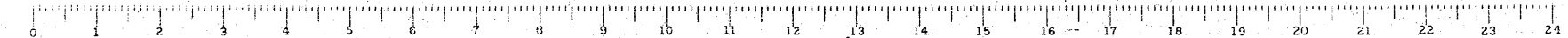
STATE OF ILLINOIS
DEPARTMENT OF PUBLIC WORKS & BUILDINGS
DIVISION OF HIGHWAYS

ROAD DISTRICT	SECTION	COUNTY	SHEET NO.	TOTAL SHEETS
EA 4	64-IVB	St. Clair	30	111
FED. ROAD DIST. NO. 7	ILLINOIS FED. AID PROJECT		13	30 SHEETS



**DETAILS - SPAN 7
GRADE SEPARATION
MISSOURI PACIFIC R.R.
NORTH OF DUPR
EA ROUTE 4 - SACGREVILLE
ST. CLAIR COUNTY**

STANDARD	COMPUTED	EXAMINED	8-10	1954
	CHECKED	W. E. Hanson		
	DRAWN	W. E. Hanson		
	CHECKED	W. E. Hanson		
SPECIAL	ASSEMBLED			
	CHECKED			



FOR INFORMATION ONLY

FILE NAME = ...N111-0876882-exist-bridge-plans-11.dgn	USER NAME = OFC...	DESIGNED -	REVISED -	STATE OF ILLINOIS DEPARTMENT OF TRANSPORTATION	SN 082-0030 PLANS (ORIGINAL PLANS)	F.A.P. SHEET NO. 312	SECTION 64-IVB	COUNTY ST. CLAIR	TOTAL SHEETS 259	SHEET NO. 111
PLOT SCALE = 40.000000' / IN.	PLOT DATE = 8/5/2010	DRAWN -	REVISED -						CONTRACT NO. 76882	
PLOT DATE = 8/5/2010		CHECKED -	REVISED -			SCALE:	SHEET NO. OF SHEETS STA.	TO STA.		ILLINOIS FED. AID PROJECT

CB Coombe-Bloxdorf P.C.
- CIVIL ENGINEERS -
- STRUCTURAL ENGINEERS -
- LAND SURVEYORS -
Design Firm License No. 184-002703