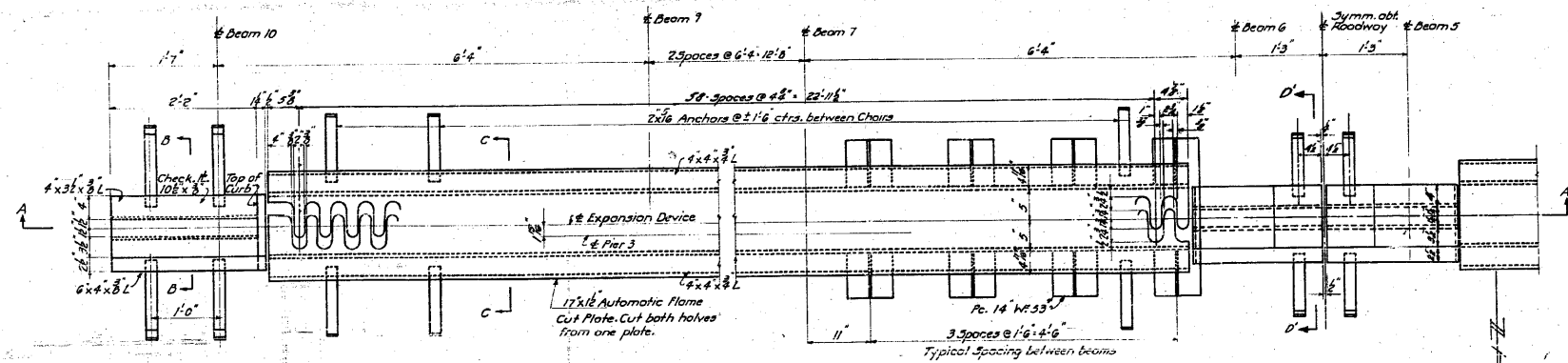


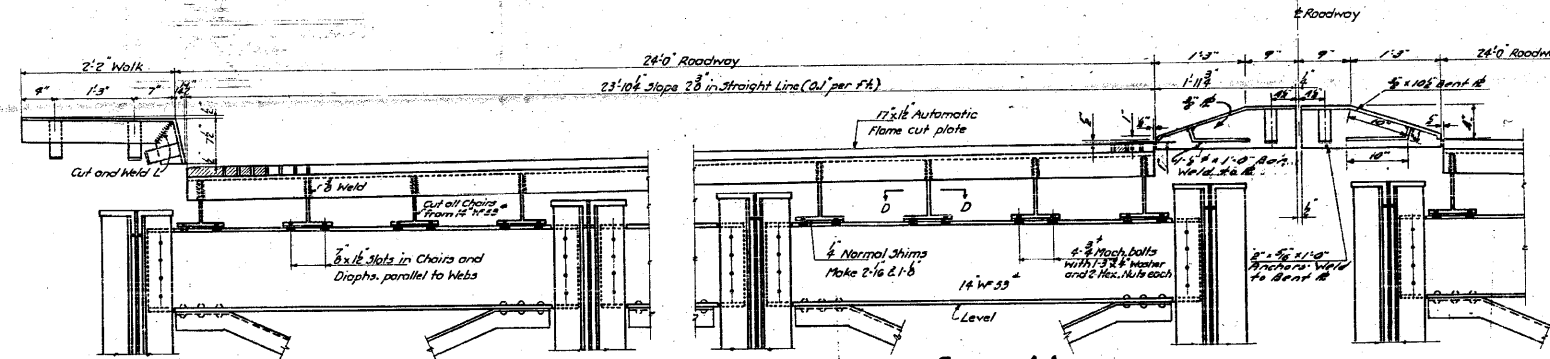
STATE OF ILLINOIS
DEPARTMENT OF PUBLIC WORKS & BUILDINGS
DIVISION OF HIGHWAYS

SECTION	COUNTY	TOTAL SHEETS	SHEET NO.
64-1-10	St. Clair	16	15
64-1-11	St. Clair	15	17

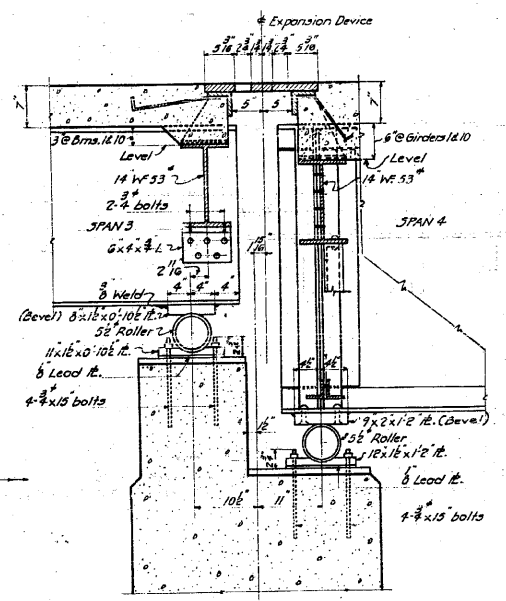
SHEET NO. 15
30 SHEETS



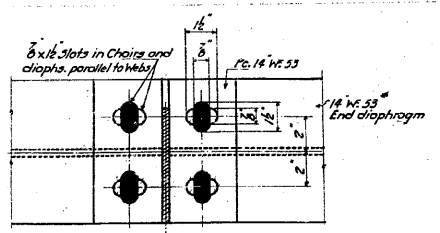
PLAN OF EXPANSION DEVICE-PIER 3
Openings between expansion plates are shown for a normal temperature of 30° F.



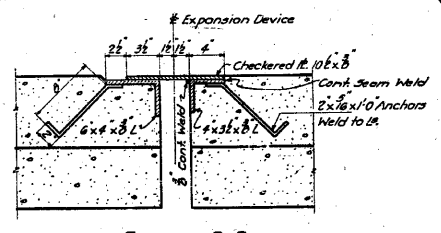
SECTION A-A



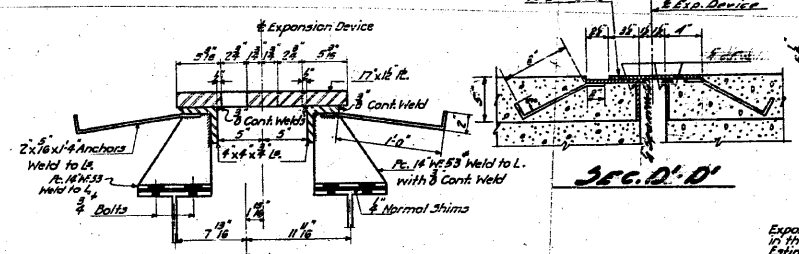
SECTION AT PIER 3



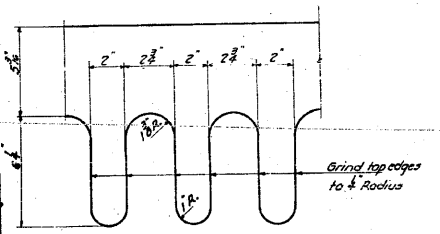
SECTION D-D



SECTION B-B



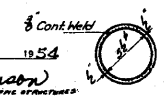
SECTION C-C



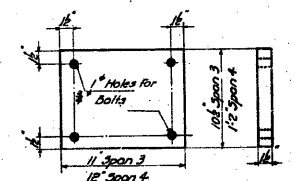
DETAIL OF EXPANSION PLATE

Expansion devices shall be inspected in the shop in their assembled position before painting.
Estimated weight of expansion device at Pier 3 included in Bill of Material on Sheet 2 as Structural Steel Carbon 4900 lbs.

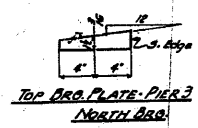
STANDARD	COMPUTED W.F. Utley	EXAMINED B-10 10-54
	CHECKED W.M. S...	DESIGNED W.E. Hanson
	DRAWN W.F. W...	PASSED [Signature]
	CHECKED W.F. W...	APPROVED R.R. [Signature]
SPECIAL	ASSEMBLED	
	CHECKED	



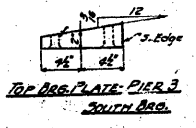
DETAILS OF ROLLERS-PIER 3



BOTTOM BRG. PLATES-PIER 3

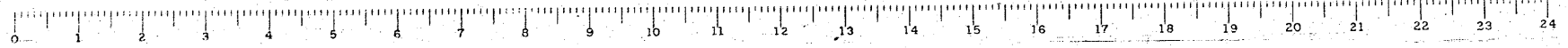


TOP BRG. PLATE-PIER 3 NORTH BRG.



TOP BRG. PLATE-PIER 3 SOUTH BRG.

EXPANSION DEVICE-PIER 3
GRADE SEPARATION
MISSOURI PACIFIC R.R.
NORTH OF DUPO
E.A. ROUTE 4 - JRG. 64-1V.D.E.F.
ST. CLAIR COUNTY



FOR INFORMATION ONLY

FILE NAME = ...115-D876882-exist-bridge-plans-15.dgn	USER NAME = CFC...	DESIGNED -	REVISED -
PLOT SCALE = 40.000000' / IN.		DRAWN -	REVISED -
PLOT DATE = 8/5/2010		CHECKED -	REVISED -
		DATE - / /	REVISED -

STATE OF ILLINOIS
DEPARTMENT OF TRANSPORTATION

SN 082-0030 PLANS
(ORIGINAL PLANS)

SCALE:	SHEET NO.	OF	SHEETS	STA.	TO STA.
--------	-----------	----	--------	------	---------

CB Coombe-Bloxdorf P.C.
- CIVIL ENGINEERS -
- STRUCTURAL ENGINEERS -
- LAND SURVEYORS -
Design Firm License No. 184-002703

F.A.P. RTE.	SECTION	COUNTY	TOTAL SHEETS	SHEET NO.
312	64-1VBR	ST. CLAIR	259	115

CONTRACT NO. 76882
ILLINOIS FED. AID PROJECT