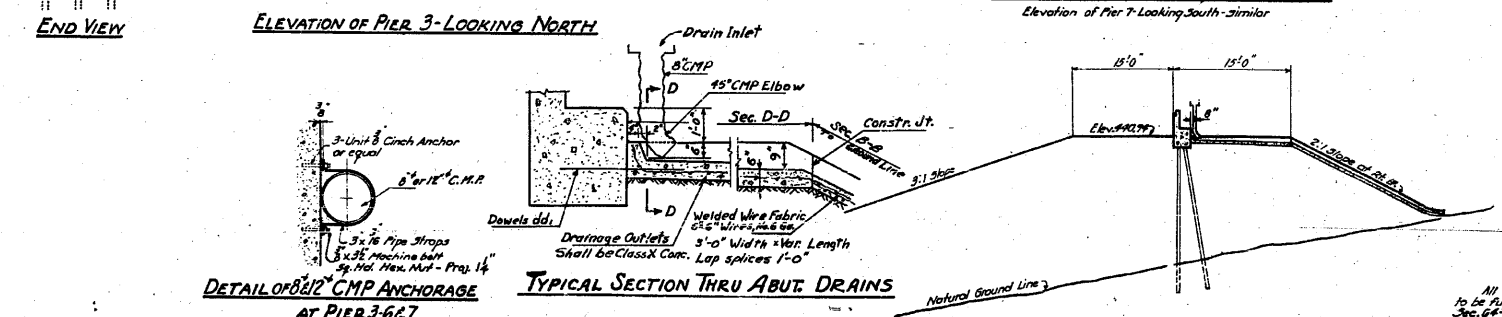
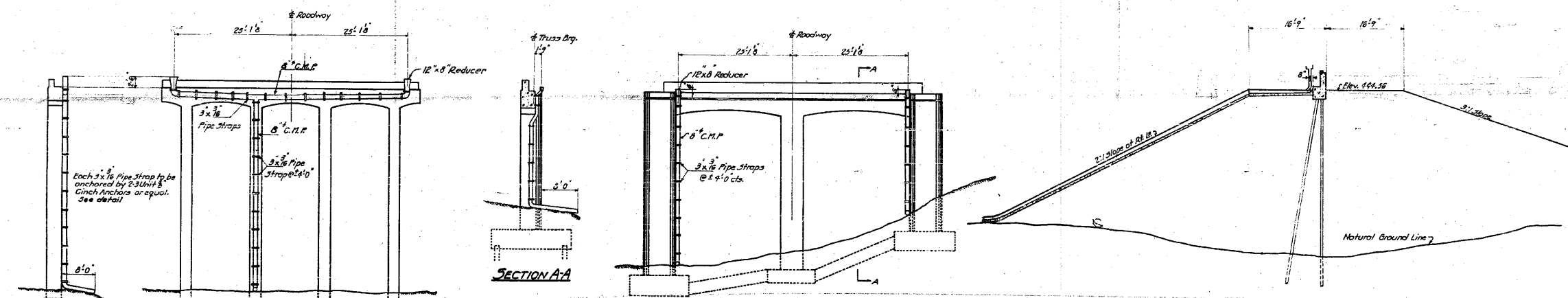
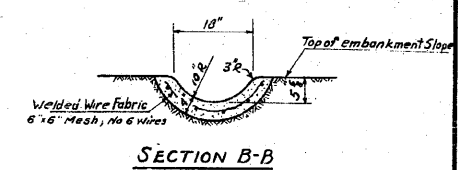
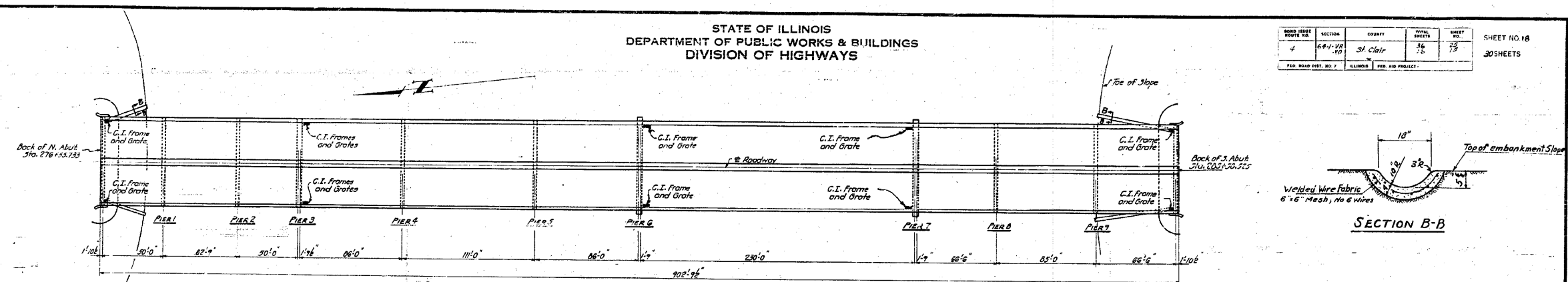


STATE OF ILLINOIS  
DEPARTMENT OF PUBLIC WORKS & BUILDINGS  
DIVISION OF HIGHWAYS

ROAD DIST. NO.	SECTION	COUNTY	ROYAL SHEETS	SHEET NO.	SHEET NO. 18
64-1VBR	10	St. Clair	16	15	30 SHEETS
FED. ROAD DIST. NO. 7	ILLINOIS	FED. AID PROJECT			



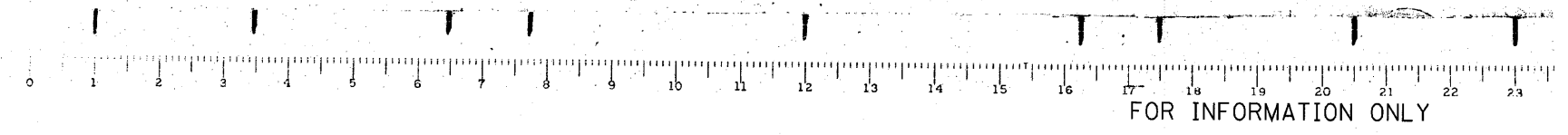
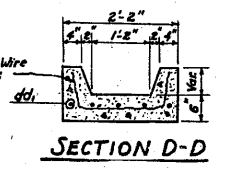
**BILL OF MATERIAL DRAINS**

ITEM	QUANTITY
8" Corc Metal Pipe	Lin. Ft. 500
Cast Iron Frames	Each 10
Class X Concrete	Cu. Yds. 7.6

**NOTE:**  
All Class X Concrete drain outlets to be furnished and installed by the Contractor for Sec. 64-11B. All other drainage material to be furnished and installed by the Contractor for Sec. 64-11D. The cost of all hangers, pipe straps, anchors, blocks, reducers and connection to be included in the cost of corrugated metal pipe. The cost of all 8" C.M.P. shall be included in the cost of Class X Concrete - Sec. 64-11D. For details of frames and grates see Sheet 17. The cost of welded wire fabric shall be included in the unit price bid for Class X Concrete.

**DECK DRAINAGE  
GRADE SEPARATION  
MISSOURI PACIFIC R.R.  
NORTH OF DUPO  
E.A. ROUTE 4 - SEC. 64-1VBR  
ST. CLAIR COUNTY**

COMPUTED	W. J. WILSON	EXAMINED	8-10-1954
CHECKED	W. M. SOMMER	ENGINEER OF BRIDGE AND TRUSS STRUCTURES	W. E. HANSON
DRAWN	W. J. W.	PASSED	[Signature]
CHECKED	W. J. W.	APPROVED	R. B. [Signature]
SPECIAL	ASSEMBLED		
	CHECKED		



FILE NAME =	USER NAME = CFC..	DESIGNED -	REVISED -
...118-D876882-exist-bridge-plans-18.dgn		DRAWN -	REVISED -
		CHECKED -	REVISED -
		DATE - / /	REVISED -

STATE OF ILLINOIS  
DEPARTMENT OF TRANSPORTATION

SN 082-0030 PLANS  
(ORIGINAL PLANS)  
SCALE: SHEET NO. OF SHEETS STA. TO STA.

**CB** Coombe-Bloxdorf P.C.  
- CIVIL ENGINEERS -  
- STRUCTURAL ENGINEERS -  
- LAND SURVEYORS -  
Design Firm License No. 184-002703

F.A.P. RTE.	SECTION	COUNTY	TOTAL SHEETS	SHEET NO.
312	64-1VBR	ST. CLAIR	259	118
				CONTRACT NO. 76882

ILLINOIS FED. AID PROJECT