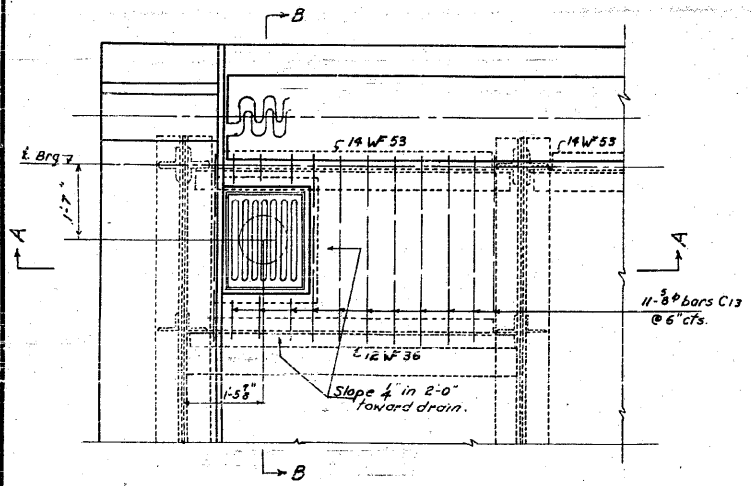


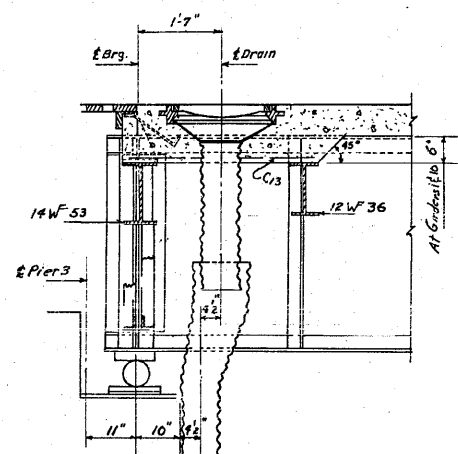
STATE OF ILLINOIS
DEPARTMENT OF PUBLIC WORKS & BUILDINGS
DIVISION OF HIGHWAYS

SECTION	COUNTY	TOTAL SHEETS	SHEET NO.
64-1VBR	ST. CLAIR	255	119

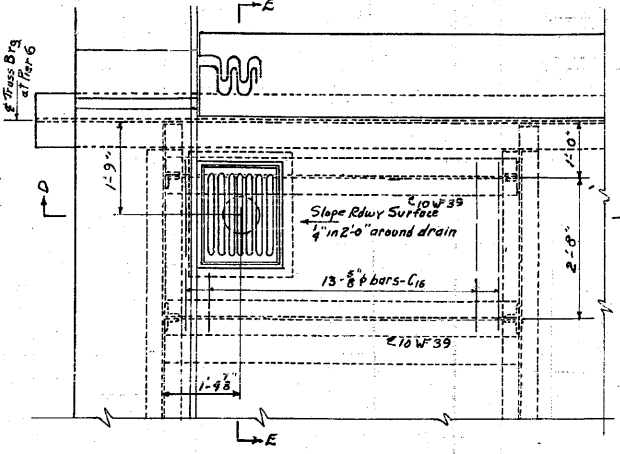
70 SHEETS



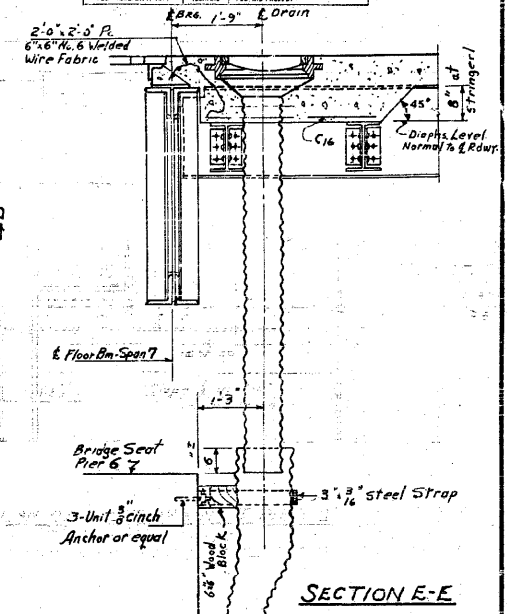
PLAN OF WEST DRAIN AT PIER 3
EAST DRAIN SIMILAR



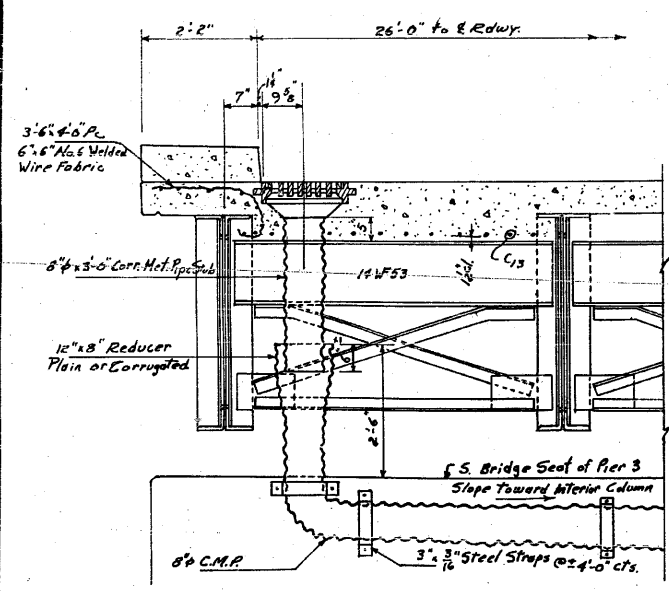
SECTION B-B



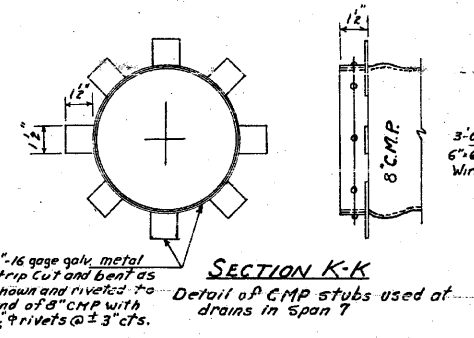
PLAN OF WEST DRAIN AT PIER 6
ALL DRAINS ON TRUSS ARE SIMILAR



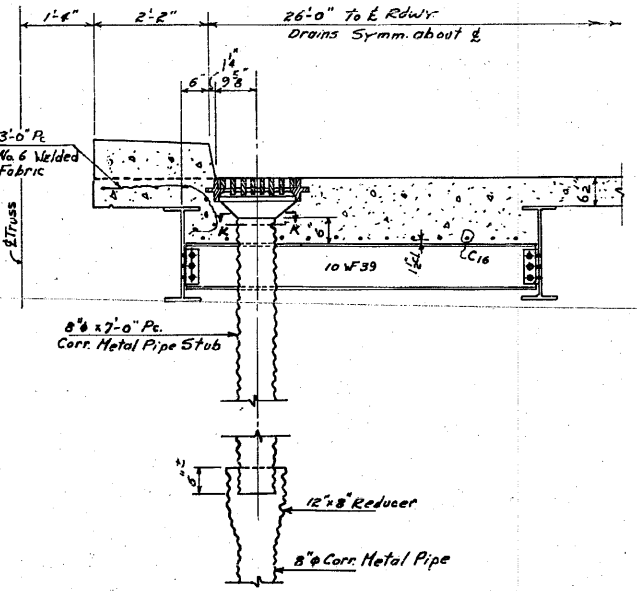
SECTION E-E



SECTION A-A



SECTION K-K
Detail of CMP stubs used at drains in span 7

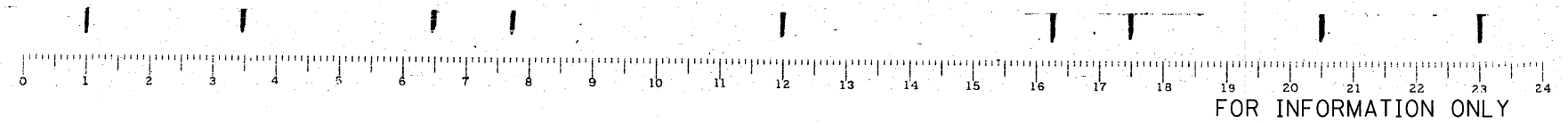


SECTION D-D

COST OF 8" C.M.P. STUBS TO BE INCLUDED IN UNIT PRICE BID FOR CLASS X CONCRETE.
COST OF REDUCERS TO BE INCLUDED IN THE UNIT PRICE BID FOR 8" C.M.P.
CUT ALL REINFORCEMENT BARS IN THE FIELD TO FIT AROUND DRAIN OPENINGS.
THE COST OF WELDED WIRE FABRIC SHALL BE INCLUDED IN THE UNIT PRICE BID PER CU. YD. FOR CLASS X CONCRETE FOR SEC. 64-1VD.
FOR DETAILS OF FRAME AND GRATES SEE SHEET 17.
FOR LOCATION OF DRAINS ON PIERS SEE SHEET 18.

DRAINAGE DETAILS
MISSOURI PACIFIC R.R.
NORTH OF DUPO
FA. ROUTE 4 - SEC. 64-1-V.D.
ST. CLAIR COUNTY

STANDARD	COMPUTED	W. W. Romner	EXAMINED	B-10	1954
CHECKED	W. S. Harris		W. E. Hamann		
DRAWN	W. S. Harris	T.O.B.			
CHECKED	W. S. Harris				
SPECIAL	ASSEMBLED		APPROVED		
CHECKED					



CB Coombe-Bloxdorf P.C.
- CIVIL ENGINEERS -
- STRUCTURAL ENGINEERS -
- LAND SURVEYORS -
Design Firm License No. 184-002703