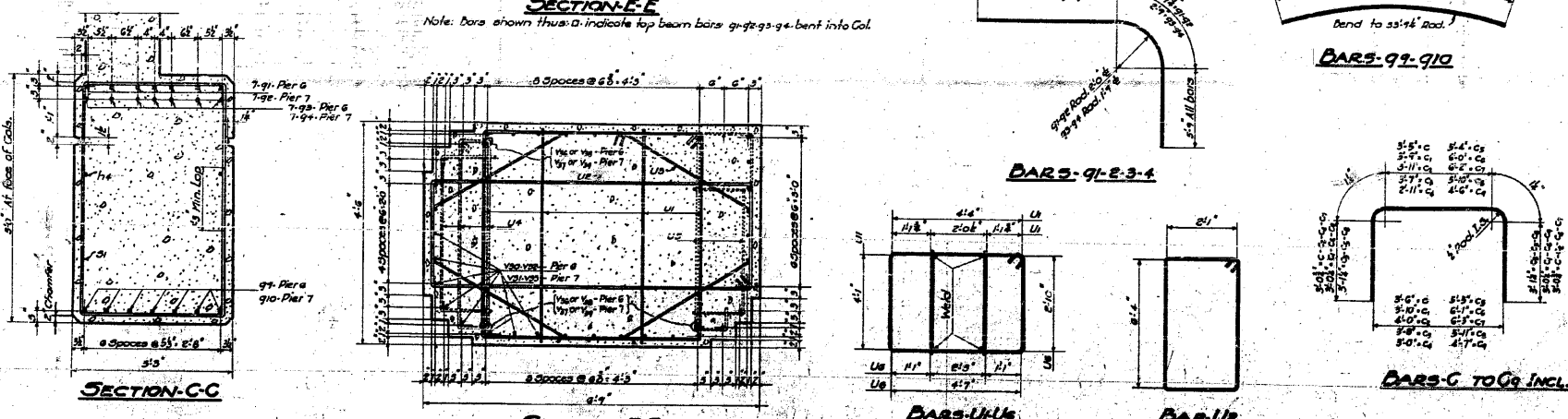
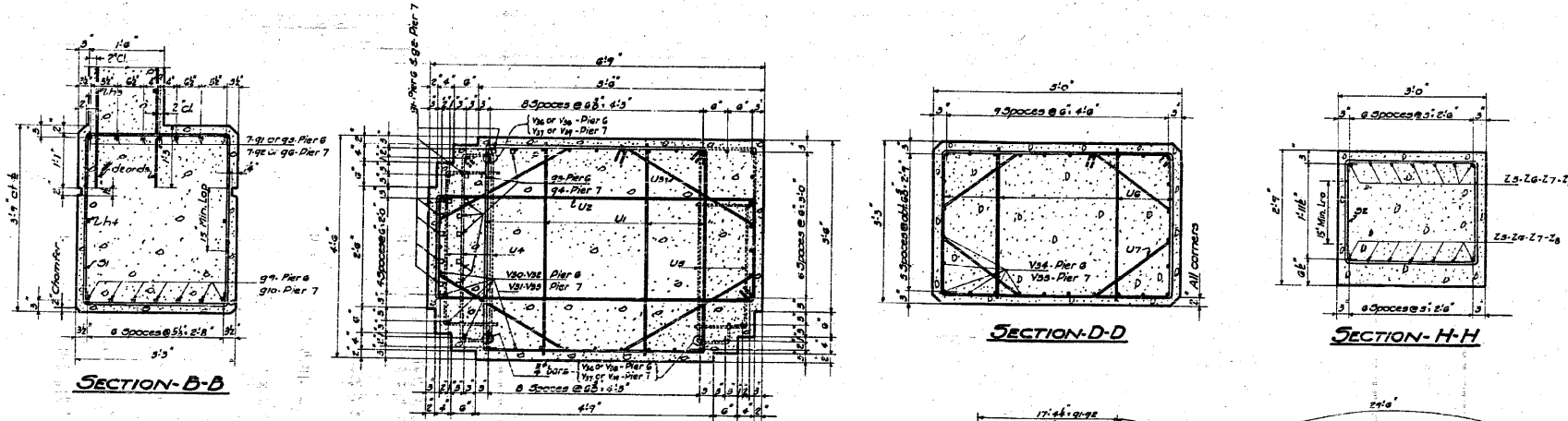


STATE OF ILLINOIS
DEPARTMENT OF PUBLIC WORKS & BUILDINGS
DIVISION OF HIGHWAYS

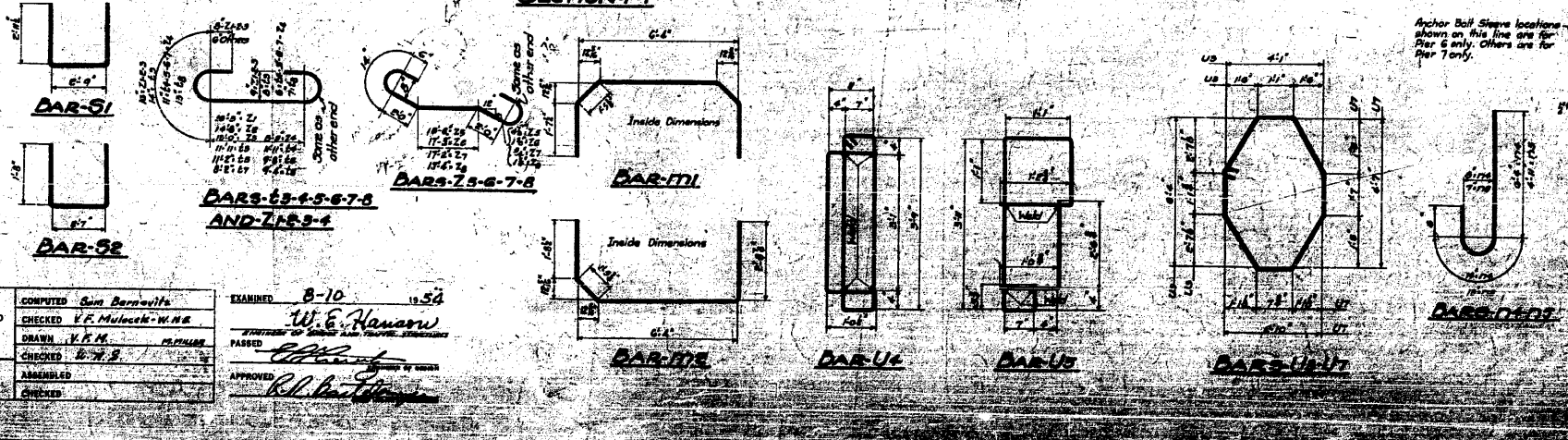
ROAD DISTRICT NO.	SECTION	COUNTY	TOTAL SHEETS	SHEET NO.
171-A	64-1VBR	St. Clair	36	31
SHEET NO. 27				
30 SHEETS				



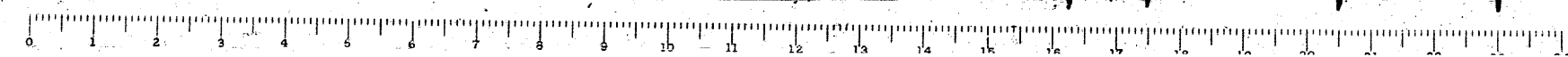
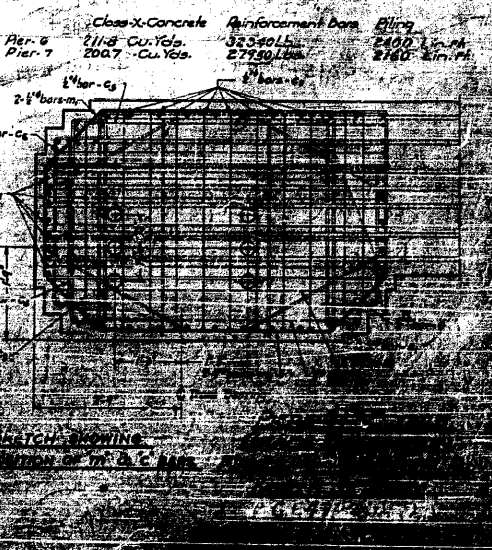
BILL OF MATERIAL-PIERS 667

BAR NO.	SIZE	LENGTH	BAR NO.	SIZE	LENGTH
23	1"	12'5"	222	1"	12'5"
24	3/4"	14'0"	223	5/8"	14'0"
25	2"	14'0"	224	10/8"	14'0"
26	2"	12'0"	225	4"	12'0"
27	2"	11'0"	226	4"	10'5"
28	2"	12'0"	227	5"	8'0"
29	4"	9'9"	U1	107	8'
30	4"	10'0"	U2	107	8'
31	3/4"	10'5"	U3	103	8'
32	4"	10'0"	U4	103	8'
33	4"	9'5"	U5	103	8'
34	4"	11'9"	U6	58	8'
35	1/4"	3'0"	U7	96	8'
36	1/4"	4'6"			
37	1/4"	29'5"	Y10	57	1"
38	1/4"	29'5"	Y11	37	1"
39	1/4"	21'0"	V10	57	1"
40	1/4"	21'0"	V11	37	1"
41	1/4"	30'0"	V12	26	3/4"
42	1/4"	30'0"	V13	26	3/4"
43	1/4"	21'0"	V14	3	3/4"
44	1/4"	27'0"	V15	3	3/4"
45	1/4"	27'0"	V16	3	3/4"
46	1/4"	27'0"	V17	3	3/4"
47	1/4"	20'0"	Z1	63	1/8"
48	1/4"	20'0"	Z2	4	1/8"
49	1/4"	10'6"	Z3	3	1/8"
50	1/4"	11'5"	Z4	34	3/8"
51	1/4"	8'0"	Z5	16	1"
52	1/4"	6'6"	Z6	14	1"
53	1/4"	8'9"	Z7	14	1"
54	1/4"	6'0"	Z8	16	1"
55	1/4"	2'5"	Z9	16	1"
56	1/4"	12'0"	Z10	5	1/8"
57	1/4"	12'0"	Z11	5	1/8"
58	1/4"	10'9"	Z12	4	1/8"
59	1/4"	7'9"	Z13	3	1/8"
60	1/4"	7'8"	Z14	3	1/8"

Class-X-Concrete Reinforcement Bars
 14" Metal Shell Piles
 14" Metal Shell Test Piles
 Class A Excavation



COMPUTED	Sam Bernasconi	EXAMINED	B-10 10/54
CHECKED	V.F. Mulcahy - W.N.R.	DRAWN	W.E. Hanson
CHECKED	V.F.M.	CHECKED	W.E.H.
CHECKED	W.N.R.	APPROVED	R.L. [Signature]



FOR INFORMATION ONLY

FILE NAME =	USER NAME = CFC..	DESIGNED -	REVISED -
...127-0876882-exist-bridge-plans-27.dgn		DRAWN -	REVISED -
		CHECKED -	REVISED -
		DATE - / /	REVISED -

STATE OF ILLINOIS
DEPARTMENT OF TRANSPORTATION

SCALE:	SHEET NO.	OF SHEETS	STA.	TO STA.

CB Coombe-Bloxdorf P.C.
 - CIVIL ENGINEERS -
 - STRUCTURAL ENGINEERS -
 - LAND SURVEYORS -
 Design Firm License No. 184-002703

F.A.P. RTE.	SECTION	COUNTY	TOTAL SHEETS	SHEET NO.
312	64-1VBR	ST. CLAIR	259	127
CONTRACT NO. 76882				
ILLINOIS FED. AID PROJECT				