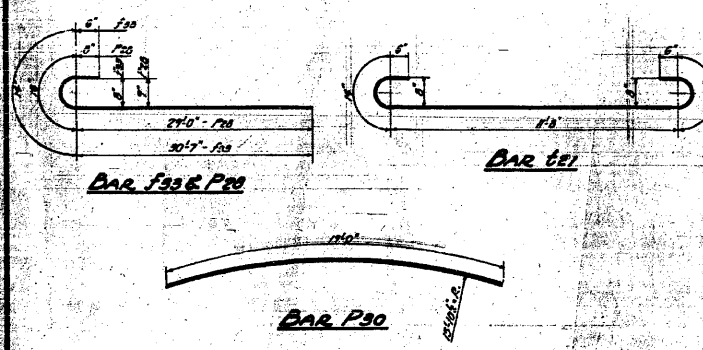
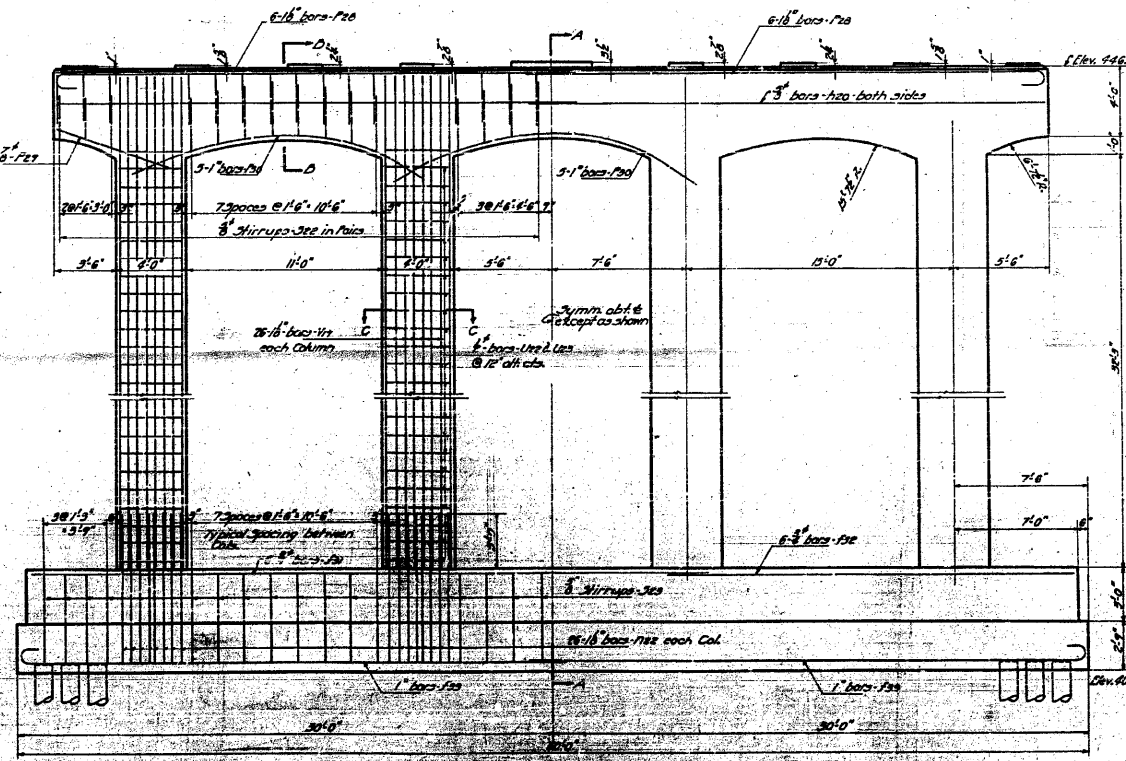
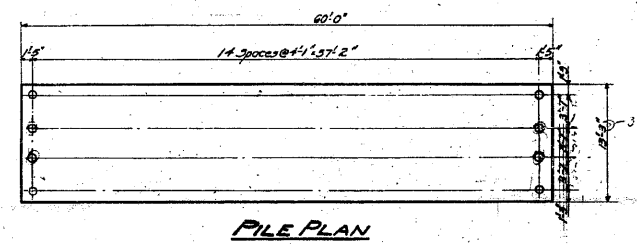
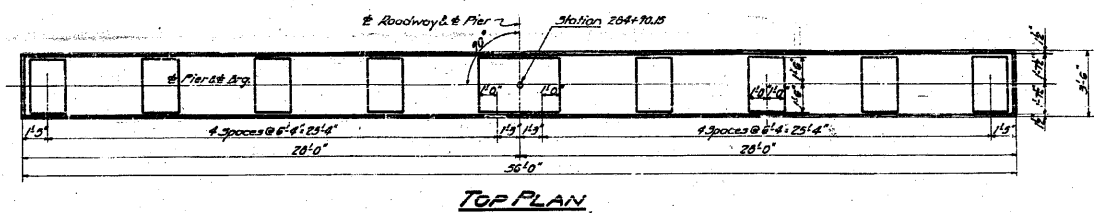
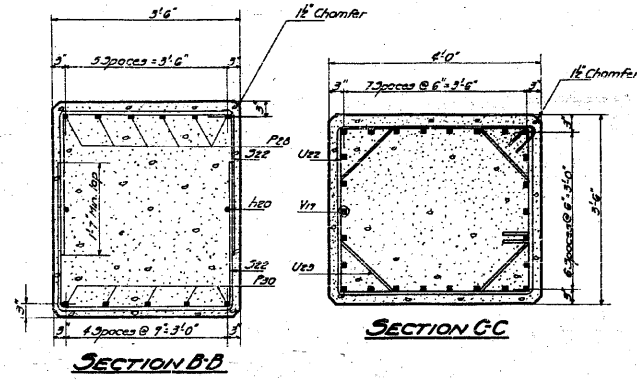


STATE OF ILLINOIS
DEPARTMENT OF PUBLIC WORKS & BUILDINGS
DIVISION OF HIGHWAYS

SECTION	SECTION	COUNTY	TOTAL SHEETS	SHEET NO.
4	64-1VB	St. Clair	36	36
SHEET NO. 30				
30 SHEETS				

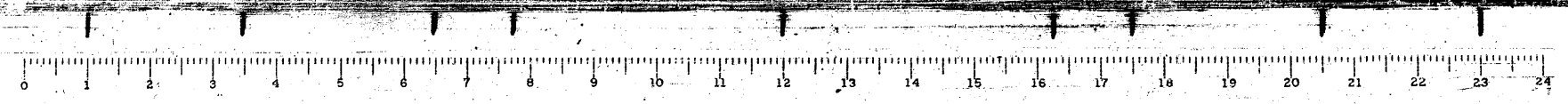


BILL OF MATERIAL

BAR	NUMBER	SIZE	LENGTH
F31	6	3"	30'-0"
F32	6	3"	23'-0"
F33	22	1"	52'-0"
F20	2	3"	20'-0"
F22	104	18"	8'-0"
F23	12	18"	3'-0"
F24	6	8"	7'-0"
F25	15	1"	17'-0"
F26	60	3"	9'-0"
F27	32	3"	14'-6"
G21	80	1"	15'-0"
U22	60	6"	14'-6"
U23	64	2"	12'-0"
V1	104	18"	36'-9"

Class X Concrete Cu. Yds. 209.8
Reinforcement Bars Lbs. 34460
12" Metal Shell Piles Lin. Ft. 1770
12" Metal Shell Test Pile Emb. 1'
Class A Exc. for 51% Cu. Yds. 400

COMPUTED	W. J. York	EXAMINED	8-10-54
CHECKED	W. E. Hanson	PASSED	
DRAWN		APPROVED	
CHECKED			
SPECIAL			
CHECKED			



FOR INFORMATION ONLY

FILE NAME =	USER NAME = CFC..	DESIGNED -	REVISED -
...130-0876882-exist-bridge-plans-38.dgn		DRAWN -	REVISED -
		CHECKED -	REVISED -
		DATE - / /	REVISED -

STATE OF ILLINOIS
DEPARTMENT OF TRANSPORTATION

SN 082-0030 PLANS
(ORIGINAL PLANS)
SCALE: SHEET NO. OF SHEETS STA. TO STA.

CB Coombe-Bloxdorf P.C.
- CIVIL ENGINEERS -
- STRUCTURAL ENGINEERS -
- LAND SURVEYORS -
Design Firm License No. 184-002703

F.A.P. RTE.	SECTION	COUNTY	TOTAL SHEETS	NO.
312	64-1VBR	ST. CLAIR	259	130
				CONTRACT NO. 76882
ILLINOIS FED. AID PROJECT				