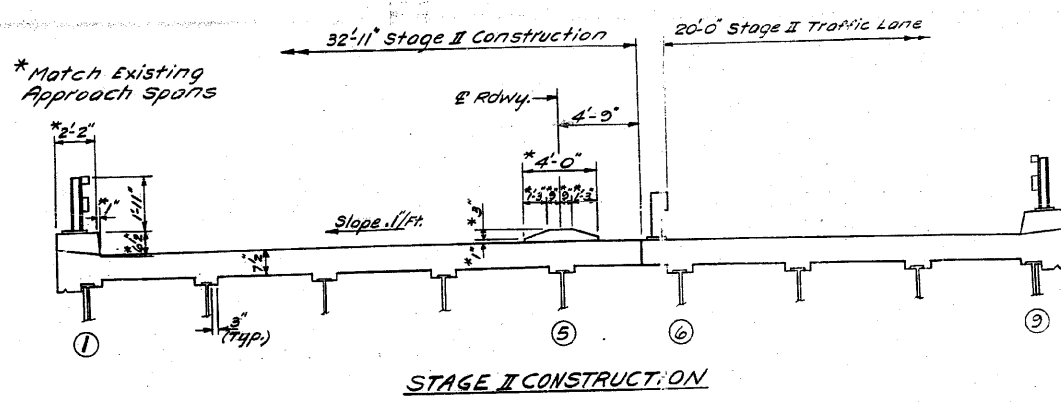
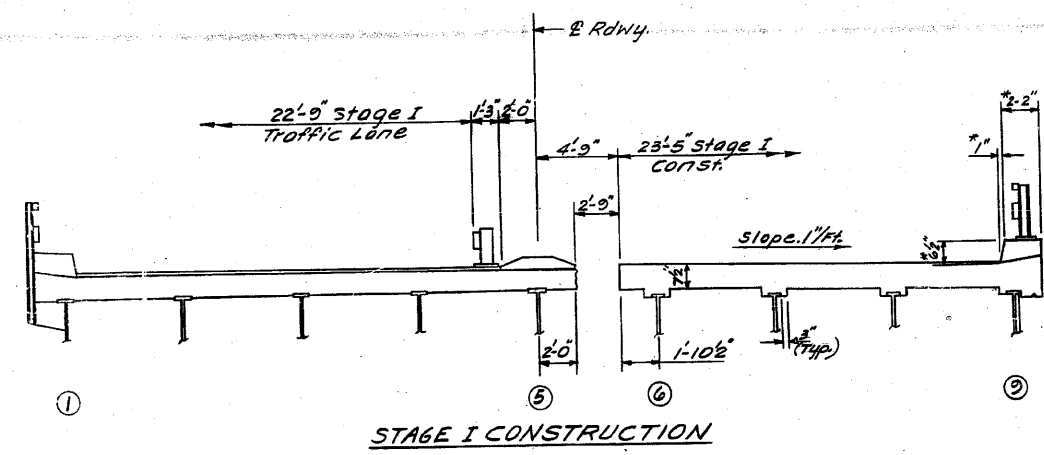
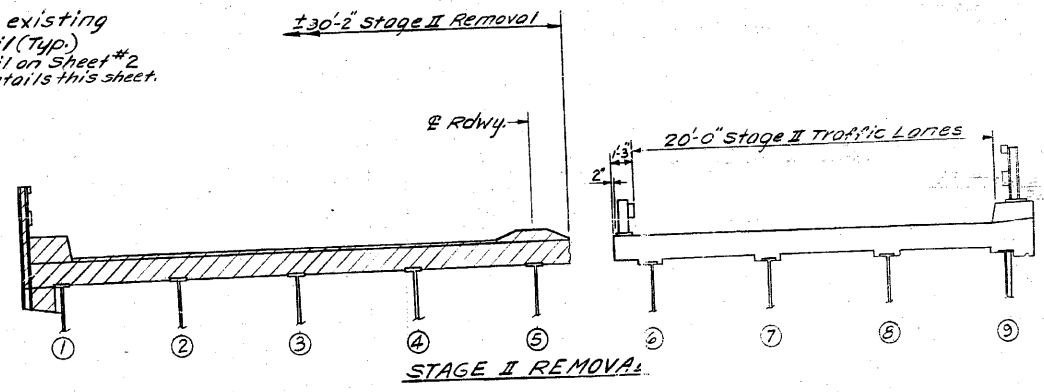
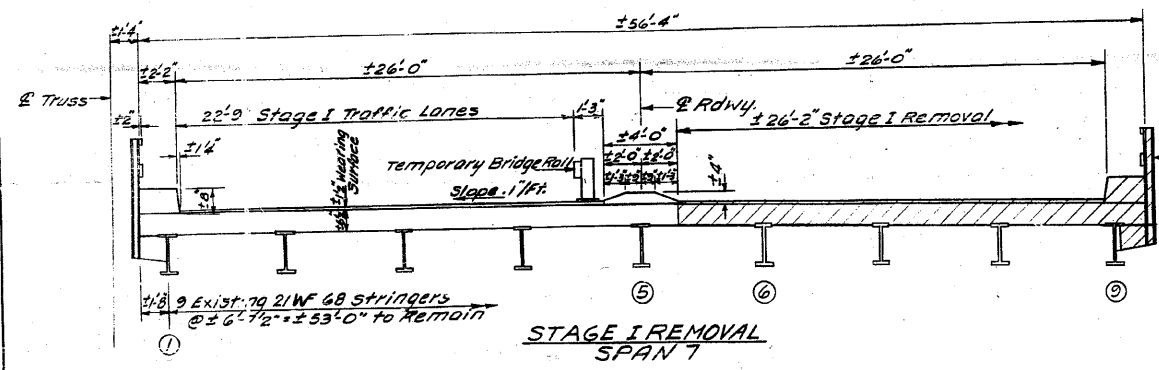


STATE OF ILLINOIS  
DEPARTMENT OF TRANSPORTATION

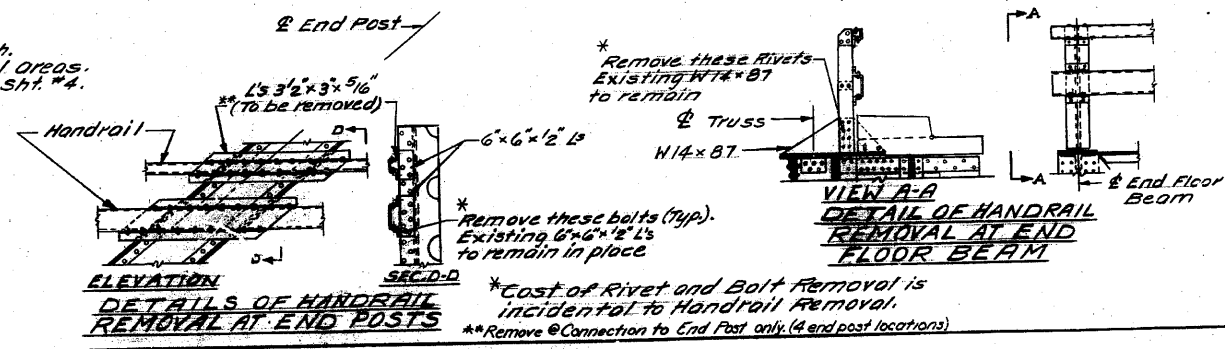
SECTION	COUNTY	TOTAL SHEETS	SHEET NO.
64-IVBR	ST. CLAIR	259	7
SHEET NO. 3 18 SHEETS			



All cross sections are looking South.  
Hatched Portions Indicate Removal Areas.  
For Temporary Bridge Rail details, see Sht. #4.

DESIGNED: *Ramon Belva*  
CHECKED: *Daniel Struff*  
DRAWN: LH  
CHECKED: DG

EXAMINED: *Ramon Belva*  
APPROVED: *Ramon Belva*  
DIRECTOR OF HIGHWAYS



STAGE CONSTRUCTION DETAILS  
SPAN 7  
FA. RTE. 14 SEC. 64-IVB1  
ST. CLAIR COUNTY  
STA. 281 + 07.13

FOR INFORMATION ONLY

STATE OF ILLINOIS  
DEPARTMENT OF TRANSPORTATION

SN 082-0030 PLANS  
(REHABILITATION PLANS)

**CB** Coombe-Bloxdorf P.C.  
- CIVIL ENGINEERS -  
- STRUCTURAL ENGINEERS -  
- LAND SURVEYORS -  
Design Firm License No. 184-002703

FILE NAME =	USER NAME = CFC...	DESIGNED -	REVISED -	STATE OF ILLINOIS DEPARTMENT OF TRANSPORTATION	SN 082-0030 PLANS (REHABILITATION PLANS)	SCALE:	SHEET NO. OF SHEETS	STA. TO STA.	F.A.P. RTE.	SECTION	COUNTY	TOTAL SHEETS	SHEET NO.
...135-0876882-exist-bridge-repair-plans-25.dgn	DRAWN -	REVISED -	312						64-IVBR	ST. CLAIR	259	135	
PLOT SCALE = 40.000000 ' / IN.	CHECKED -	REVISED -	CONTRACT NO. 76882										
PLOT DATE = 8/5/2010	DATE - / /	REVISED -	ILLINOIS FED. AID PROJECT										