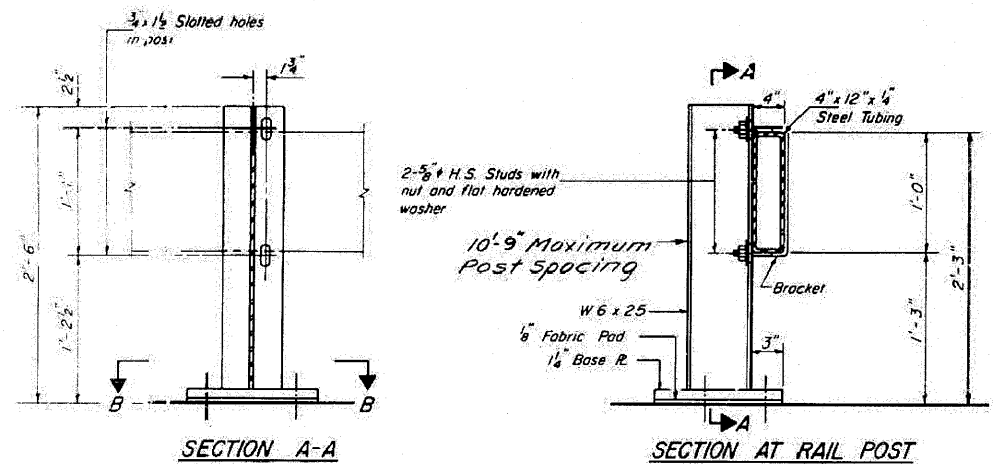
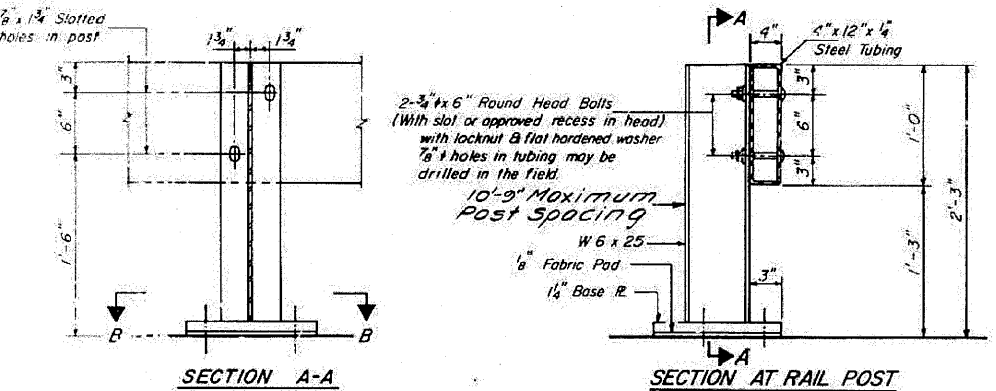


STATE OF ILLINOIS
DEPARTMENT OF TRANSPORTATION

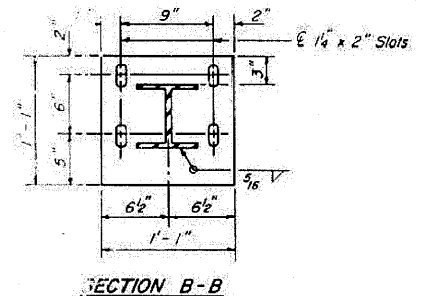
DESIGN NO.	SECTION	PROJECT	TOTAL SHEETS	SHEET NO.
11-NBI	ST. CLAIR	23	8	18 SHEETS



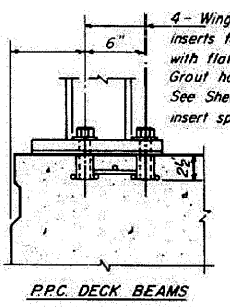
ALTERNATE I



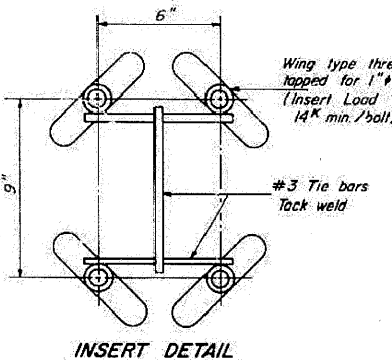
ALTERNATE II



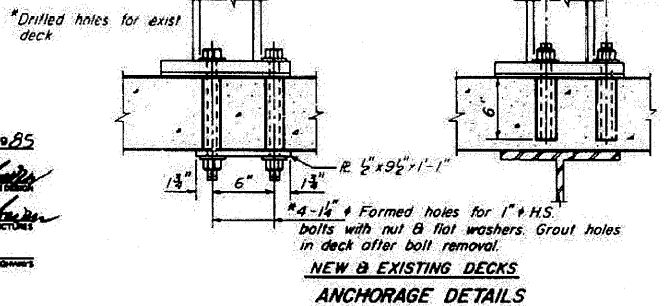
SECTION B-B



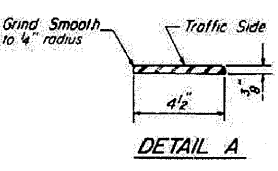
PPC DECK BEAMS



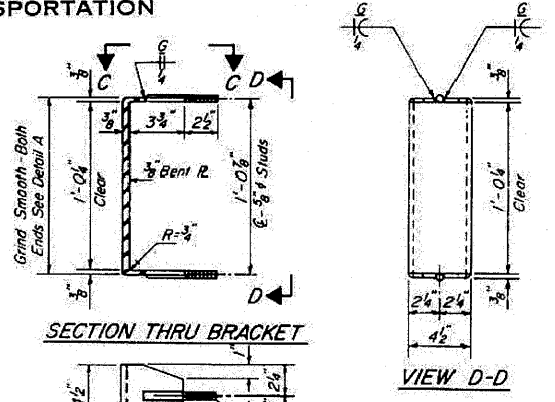
INSERT DETAIL



NEW & EXISTING DECKS
ANCHORAGE DETAILS

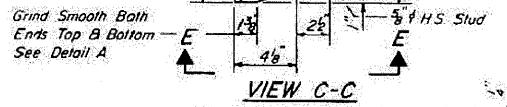


DETAIL A

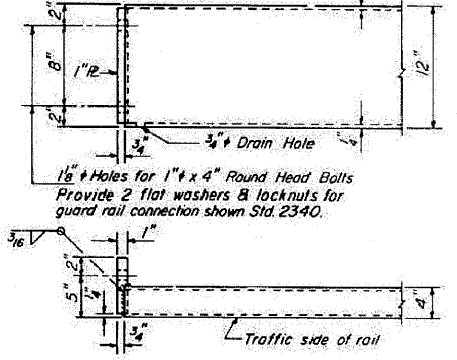


SECTION THRU BRACKET

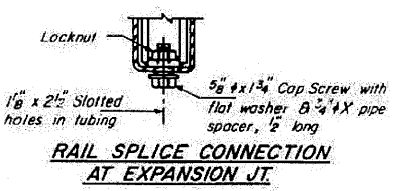
VIEW D-D



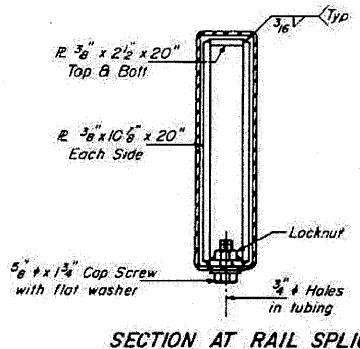
VIEW C-C



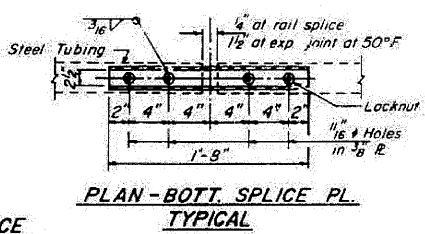
END OF RAIL DETAILS



RAIL SPLICE CONNECTION
AT EXPANSION JT.



SECTION AT RAIL SPLICE



PLAN - BOTT. SPLICE PL.
TYPICAL

NOTES

Hollow structural steel tubing shall conform to the requirements of ASTM designation A-500 Grade B Structural Steel Tubing.
All other steel shapes and plates shall conform to the requirements of AASHTO M-183 except posts and brackets shall conform to AASHTO M 223 Grade 50 Bolts, cap screws, and nuts shall conform to the requirement of ASTM designation A-307 except for high strength bolts, threaded rods, studs, nuts and washers noted which shall conform to A.A.S.H.T.O. M-164.
The bridge rail shall receive one shop coat of a steel prime paint.
The 1" high strength bolts or threaded rods used to connect the railposts shall be tightened in accordance with Article 50704(g)(3) of the Standard Specification.
See Special Provisions for Temporary Bridge Rail.
The contact surfaces between post flange, rail and inside face of bracket for Alternate J shall be free of all lubricants.
The nut for 5/8" high strength studs used in Alternate I to connect bracket to post shall be tightened to a snug fit and given an additional one half turn.

BILL OF MATERIAL

Item	Unit	Quantity
Temporary Bridge Rail	Lin Ft	903

TEMPORARY BRIDGE RAIL

CB Coombe-Bloxdorf P.C.
- CIVIL ENGINEERS -
- STRUCTURAL ENGINEERS -
- LAND SURVEYORS -
Design Firm License No. 184-002703

DESIGNED: *James J. Bloxdorf*
CHECKED: *James J. Bloxdorf*
DRAWN: *L.H.*
CHECKED: *CB*

EXAMINED: *James J. Bloxdorf*
PASSED: *James J. Bloxdorf*
APPROVED: *James J. Bloxdorf*

Feb. 4, 1985

STATE OF ILLINOIS
DEPARTMENT OF TRANSPORTATION

SN 082-0030 PLANS
(REHABILITATION PLANS)

FILE NAME =	USER NAME = CFC..	DESIGNED -	REVISED -
...137-D876882-exist-bridge-repair-plans	77.dgn	DRAWN -	REVISED -
PLOT SCALE = 48.000000 / IN.		CHECKED -	REVISED -
CB JOB NO 09021	PLOT DATE = 8/5/2010	DATE - / /	REVISED -

SCALE:	SHEET NO. OF SHEETS	STA. TO STA.
--------	---------------------	--------------

F.A.P. RTE.	SECTION	COUNTY	TOTAL SHEETS	SHEET NO.
312	64-1VBR	ST. CLAIR	259	137
			CONTRACT NO. 76882	
ILLINOIS FED. AID PROJECT				