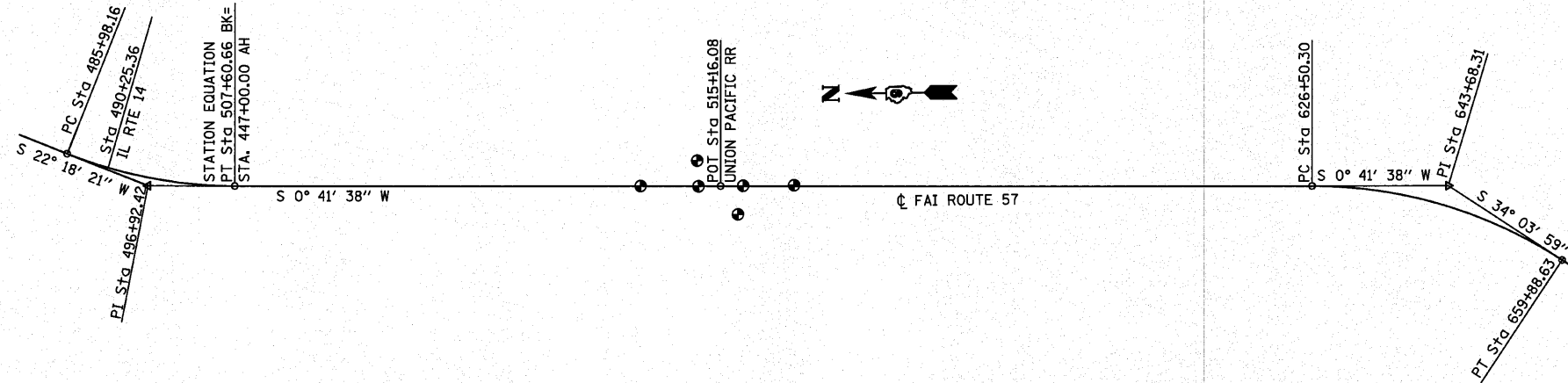


PROP. CURVE 105  
 PI STA. = 643+68.31  
 $\Delta = 33^\circ 22' 20''$  (RT)  
 $D = 0^\circ 59' 59''$   
 $R = 5,731.47'$   
 $T = 1,718.01'$   
 $L = 3,338.33'$   
 $E = 251.95'$   
 P.C. STA. = 626+50.30  
 P.T. STA. = 659+88.63

PROP. CURVE 106  
 PI STA. = 496+92.42  
 $\Delta = 21^\circ 36' 42''$  (LT)  
 $D = 0^\circ 59' 58''$   
 $R = 5,733.09'$   
 $T = 1,094.25'$   
 $L = 2,162.50'$   
 $E = 103.49'$   
 P.C. STA. = 485+98.16  
 P.T. STA. = 507+60.66



GROUND COORDINATES				
DESCRIPTION	POINT NO.	NORTHING	EASTING	
FAI ROUTE. 57				
PC STA. 485+98.16	PC 106	485,299.0603	811,189.8994	
PI STA. 496+92.42	PI 106	484,286.6870	810,774.5765	
STATION EQUATION				
PT STA. 507+60.66 BK=	PT 106	483,192.5128	810,761.3226	
STA. 447+00.00 AH				
POT STA. 515+16.08	11516	479,376.7127	810,715.1015	
PC STA. 626+50.30	PC 105	468,243.3142	810,580.2419	
PI STA. 643+68.31	PI 105	466,525.4280	810,559.4330	
PT STA. 659+88.63	PT 105	465,102.2436	809,597.0859	

PERMANENT SURVEY MARKERS				
DESCRIPTION	OFFSET	NORTHING	EASTING	ELEV.
FAI ROUTE. 57				
P. O. T. 500+50.00	¢	480,842.6788	810,732.8548	443.69
P. O. T. 513+00.00	¢	479,592.7861	810,717.7193	474.44
P. O. T. 517+50.00	¢	479,142.7997	810,712.2674	477.01
P. O. T. 531+00.00	¢	477,792.9118	810,695.9184	460.59
STA. 513+85.00	155' LT	479,505.9131	810,871.6888	451.92
STA. 516+85.00	190' RT	479,210.1122	810,523.0765	445.05

STATE OF ILLINOIS  
 DEPARTMENT OF TRANSPORTATION

ALIGNMENT AND TIES  
 I-57 OVER UNION PACIFIC RAILROAD

FILE NAME =	USER NAME = default	DESIGNED -	REVISED -
H:\P\25066p2\Technical_Production\Civil\	forrestation\Sec283VB1\al&tes283vb.dgn	DRAWN -	REVISED -
	PLOT SCALE = 50.0000' / IN.	CHECKED -	REVISED -
	PLOT DATE = 8/13/2010	DATE -	REVISED -

SCALE: SHEET NO. 1 OF 1 SHEETS STA. TO STA.

F.A.I. RTE.	SECTION	COUNTY	TOTAL SHEETS	SHEET NO.
57	(28-3-1)VB-1	FRANKLIN	98	13
CONTRACT NO. 78068				
FED. ROAD DIST. NO. ILLINOIS FED. AID PROJECT				