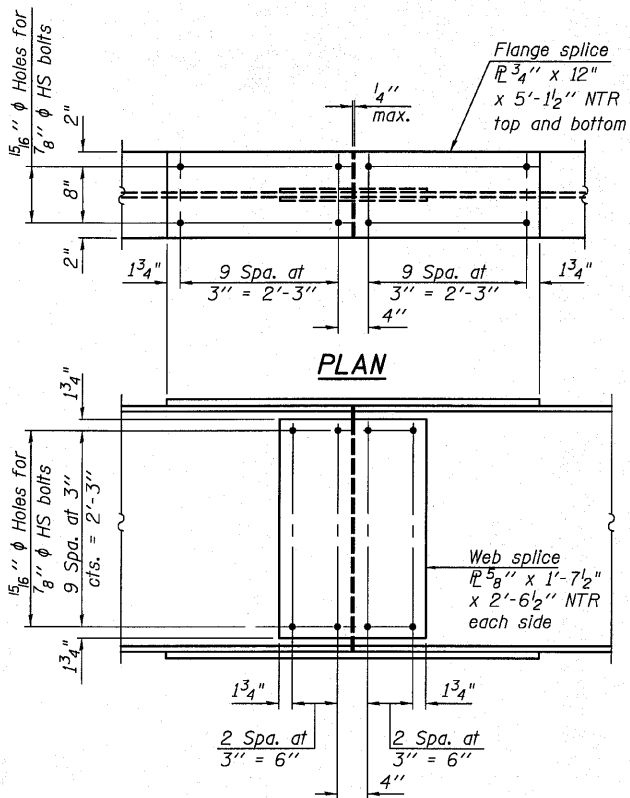
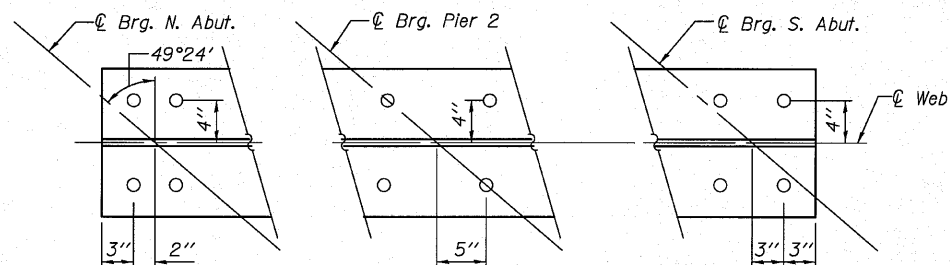


**FRAMING PLAN**  
All beams are W36x135 NTR



**TYPICAL SPLICE DETAIL**  
(20 Required)



**BOTTOM FLANGE PARTIAL PLAN**  
Showing 1/8" hole locations at expansion bearings

**TOP OF BEAM ELEVATIONS**

Location	Beam 1	Beam 2	Beam 3	Beam 4	Beam 5	Beam 6	Beam 7	Beam 8	Beam 9	Beam 10
⊕ Brg. North Abutment	476.69	476.89	477.08	477.25	477.33	477.30	477.25	477.18	477.11	477.04
⊕ Brg. Pier 1	477.21	477.40	477.58	477.73	477.80	477.76	477.70	477.62	477.54	477.46
⊕ Splice 1	477.32	477.50	477.68	477.83	477.90	477.85	477.79	477.71	477.62	477.54
⊕ Splice 2	477.77	477.94	478.11	478.25	478.31	478.25	478.17	478.08	477.98	477.89
⊕ Brg. Pier 2	477.84	478.01	478.18	478.31	478.37	478.31	478.23	478.14	478.04	477.94
⊕ Brg. South Abutment	478.19	478.36	478.50	478.63	478.68	478.60	478.52	478.41	478.30	478.19

For Fabrication Only

**NOTES**

All beams and splice plates shall be M270 Grade 50.  
Load carrying components designated "NTR" shall conform to the Supplemental Requirements for Notch Toughness, Zone 2.  
See Sheet 26 of 43 for diaphragm and shear stud details.

**FRAMING PLAN  
NB STRUCTURE  
SN 028-0082**

<b>COOMBE-BLOXDORF P.C.</b> Engineers / Land Surveyors Springfield, Illinois Design Firm License No. 184-002703	PROJECT NO. 07062	SHEET NO. 25	F.A.I. RTE.	SECTION	COUNTY	TOTAL SHEETS	SHEET NO.
	DATE 11/12/08		57	(28-3-1)VB-1	FRANKLIN	98	49
	DESIGN BY CME/GB	43 SHEETS	CONTRACT NO. 78068				
	DRAWN BY TFG CHECKED BY CME/MCB		FED. ROAD DIST. NO. 7 ILLINOIS FED. AID PROJECT				