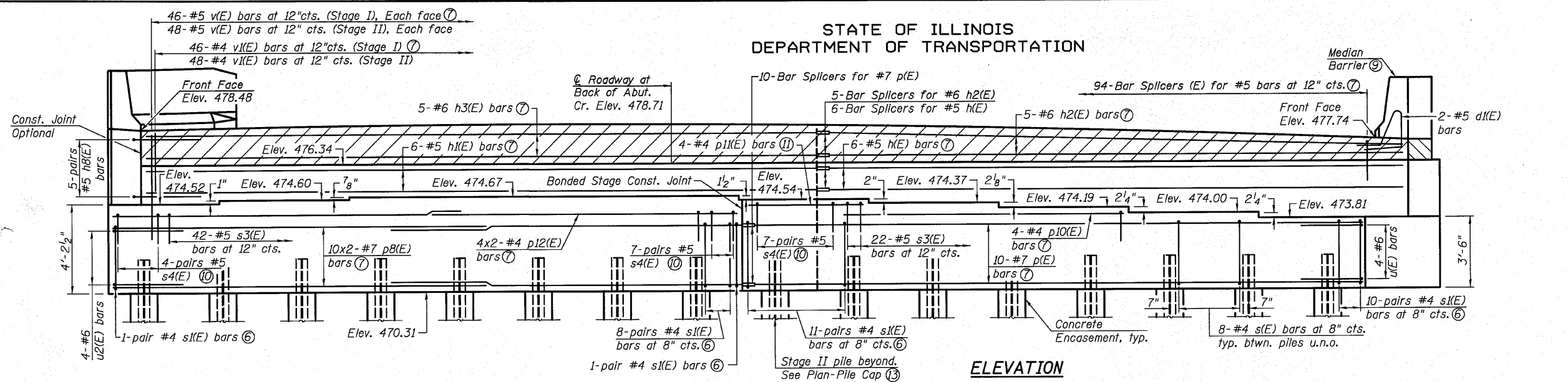
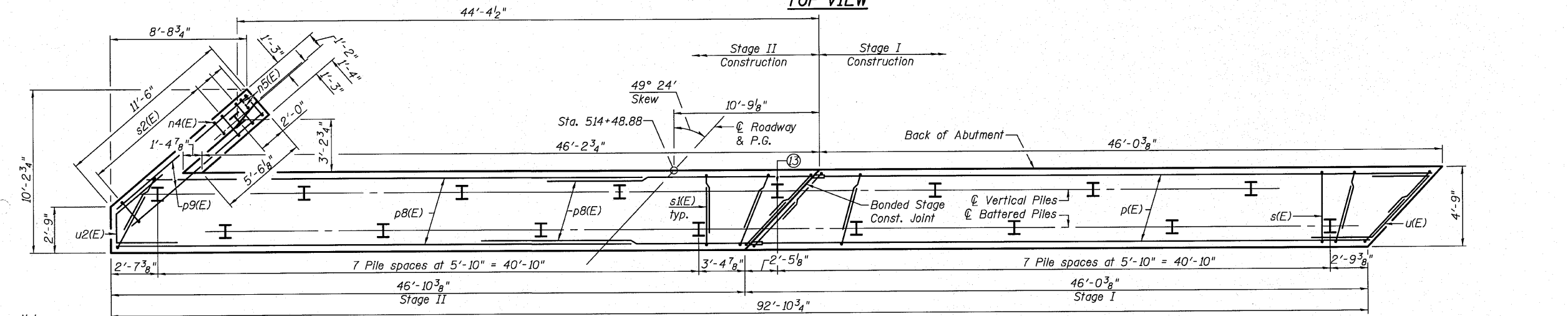
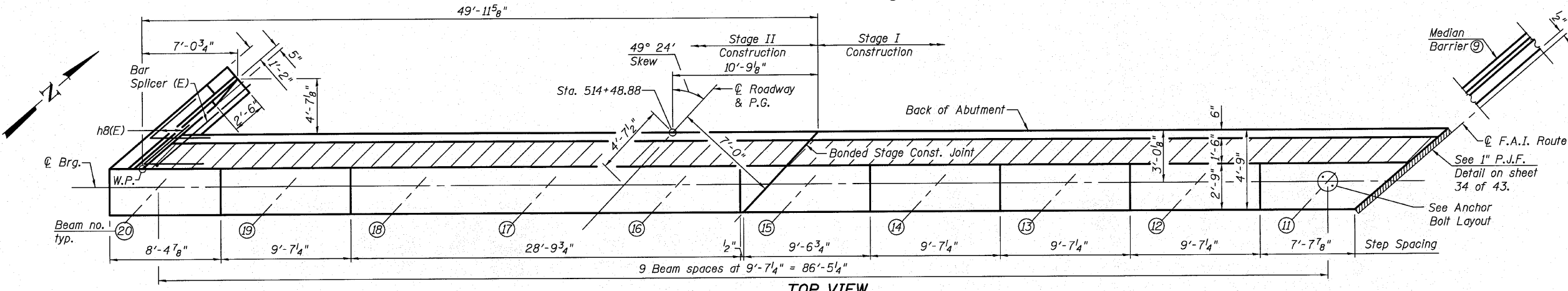


STATE OF ILLINOIS  
DEPARTMENT OF TRANSPORTATION

SB NORTH ABUTMENT  
BILL OF MATERIAL

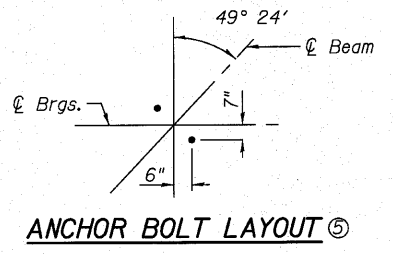


Bar	No.	Size	Length	Shape
d1(E)	2	#5	7'-9"	L
h(E)	6	#5	45'-8"	—
h1(E)	6	#5	47'-3"	—
h2(E)	5	#6	45'-8"	—
h3(E)	5	#6	47'-3"	—
h8(E)	10	#5	9'-0"	L
h9(E)	8	#4	10'-11"	—
h10(E)	6	#4	9'-4"	—
h11(E)	2	#4	10'-4"	—
n4(E)	7	#6	12'-6"	—
n5(E)	6	#6	6'-3"	—
p(E)	10	#7	45'-8"	—
p8(E)	20	#7	27'-4"	—
p9(E)	6	#7	11'-2"	—
p10(E)	4	#4	20'-7"	—
p11(E)	4	#4	9'-0"	—
p12(E)	8	#4	25'-7"	—
s(E)	104	#4	15'-11"	—
s1(E)	62	#4	11'-4"	—
s2(E)	17	#4	9'-5"	—
s3(E)	64	#5	7'-9"	—
s4(E)	36	#5	5'-11"	—
u(E)	4	#6	13'-10"	—
u2(E)	4	#6	9'-7"	—
v(E)	188	#5	5'-6"	—
v1(E)	94	#4	3'-0"	—
v2(E)	12	#6	6'-8"	—
v3(E)	7	#6	7'-1"	—
v4(E)	3	#6	5'-11"	—
Structure Excavation		Cu. Yd.	46	
Concrete Structures		Cu. Yd.	85.7	
Concrete Encasement		Cu. Yd.	5.9	
Reinforcement Bars, Epoxy Coated		Pound	8,140	
Furnishing Steel Piles HP12x53		Foot	672	
Driving Piles		Foot	672	
Test Pile Steel HP12x53		Each	1	
Concrete Sealer		Sq. Ft.	718	



- Notes:
- For details of Bar Splicers, see sheet 40 of 43.
  - For details of piles and Concrete Encasement, See sheet 39 of 43.
  - For wingwall reinforcing locations and details. See sheet 34 of 43.
  - All edges shall have standard 3/4" chamfer.
  - Space reinforcement in cap to miss anchor bolts.
  - Fan s1(E) bars as required. Lap length varies to accommodate skew. Minimum lap length is 1'-4".
  - See Sec. Thru. Abut. on sheet 34 of 43 for bar locations.
  - Min. bar lap: #7 bars = 4'-10".
  - Median barrier to be poured with approach pavement.
  - Fan s4(E) bars as required. Lap length varies to accommodate skew. Minimum lap length is 1'-8".
  - Cut p11(E) bars in the field as required to fit.
  - Bars indicated thus 10 x 2-#7 etc. indicates 10 lines of bars with 2 lengths per line.
  - Contractor may drive during Stage I Construction if clearance allows or may move as approved by the Engineer.

PLAN-PILE CAP



ANCHOR BOLT LAYOUT

**PILE DATA**  
Type: HP12x53  
Nominal Required Bearing: 419 Kip  
Allowable Resistance Available: 139 Kip  
Est. Length: 42'  
No. Production Piles: 16  
No. Test Piles: 1

NORTH ABUTMENT DETAILS  
SB STRUCTURE  
STRUCTURE NO. 028-0081

SHEET NO. 29	F.A.I. RTE.	SECTION	COUNTY	TOTAL SHEETS	SHEET NO.
	57	(28-3-1)VB-1	FRANKLIN	98	53
43 SHEETS	CONTRACT NO. 78068				
	FED. ROAD DIST. NO. 7 ILLINOIS FED. AID PROJECT				
OATES ASSOCIATES Consulting Engineers Eastport Business Center 1 100 Lanter Court, Suite 1 Collinsville, Illinois 62234 618-345-2200 Design Firm License No. 184.001115			DESIGNED JAD CHECKED MJP DRAWN JAD CHECKED MJP		