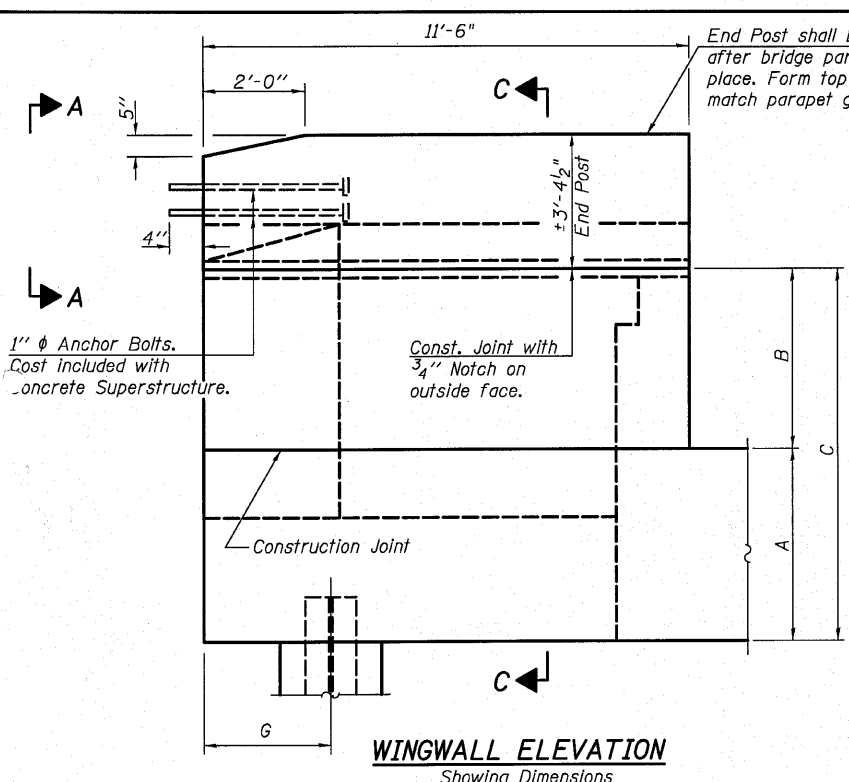
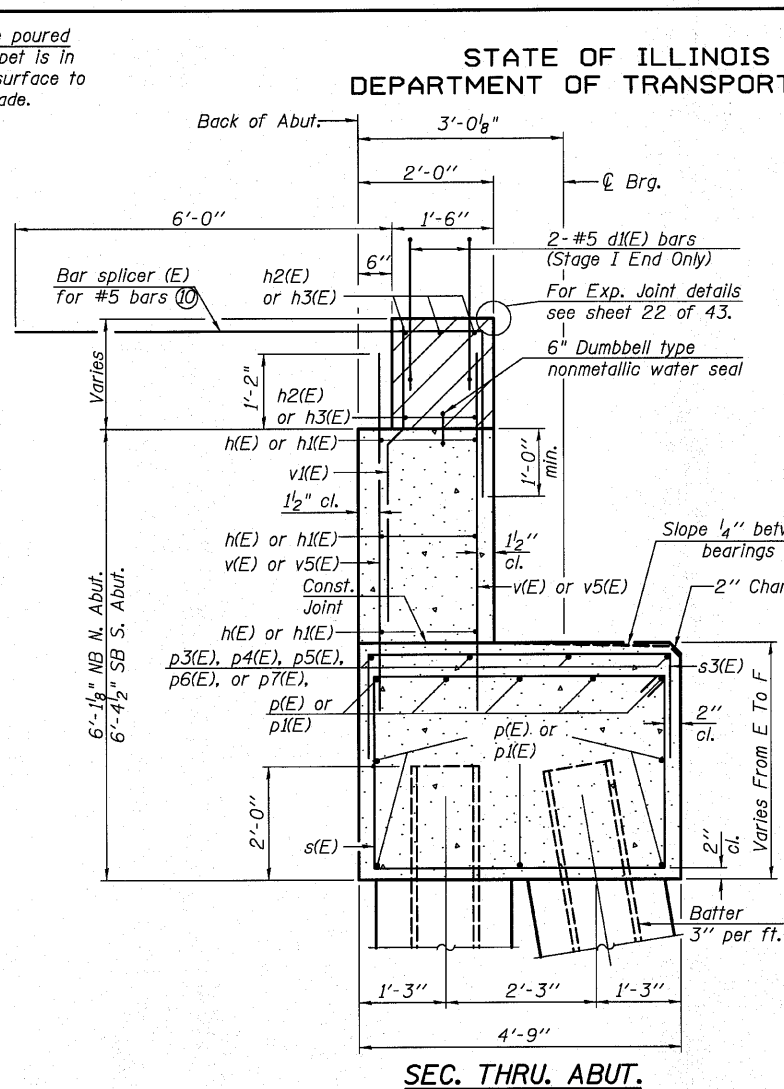


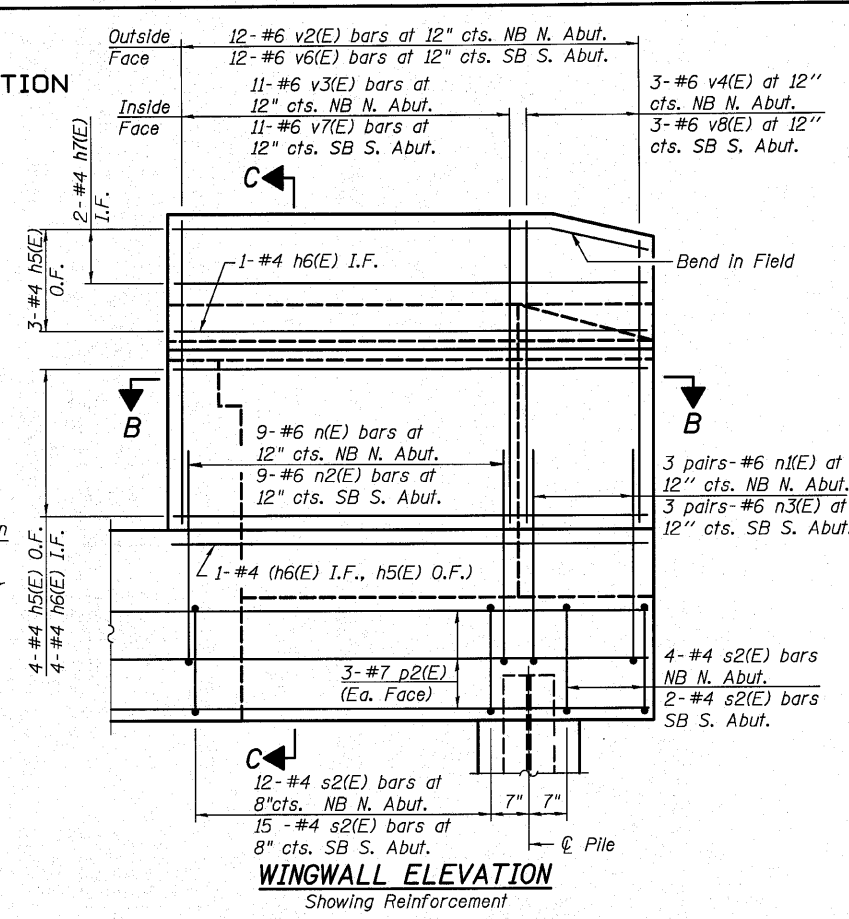
STATE OF ILLINOIS  
DEPARTMENT OF TRANSPORTATION



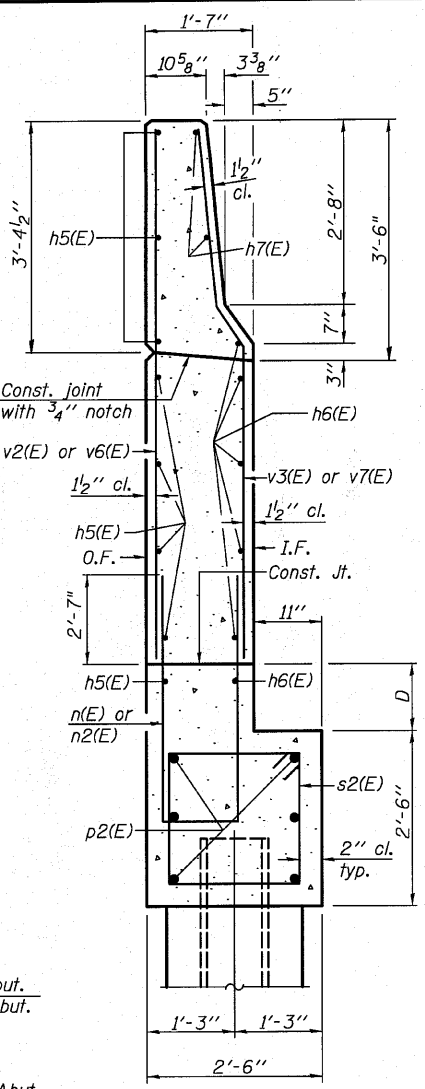
**WINGWALL ELEVATION**  
Showing Dimensions



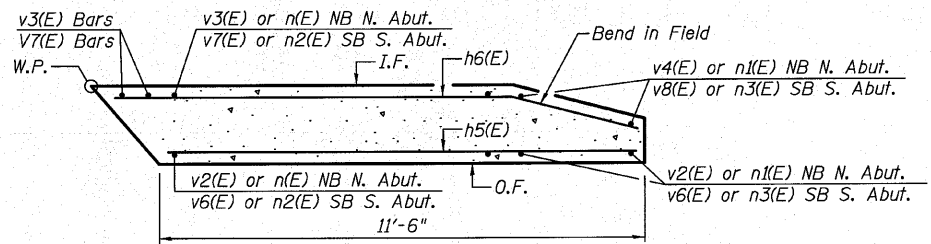
**SEC. THRU. ABUT.**



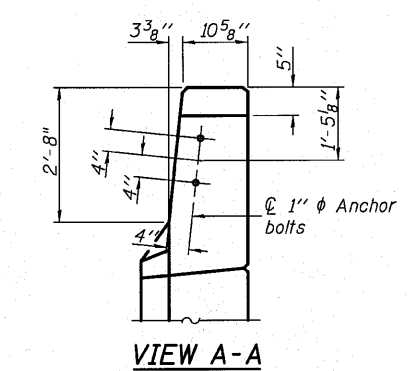
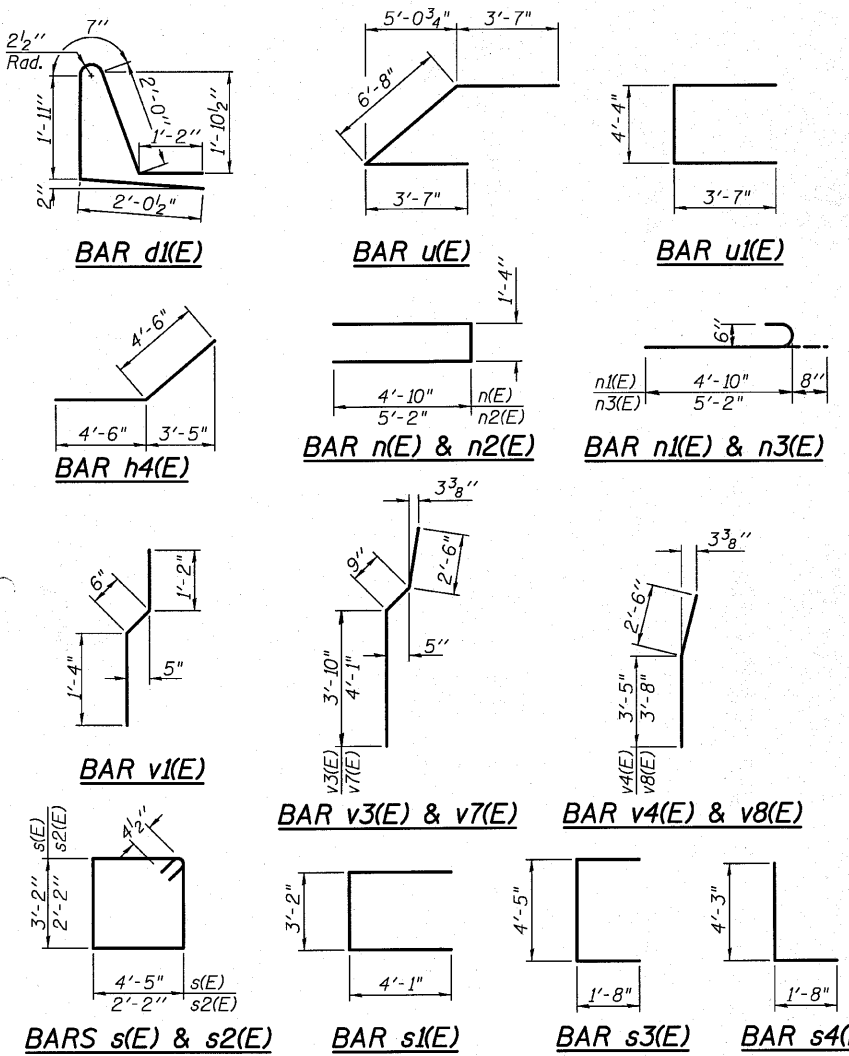
**WINGWALL ELEVATION**  
Showing Reinforcement



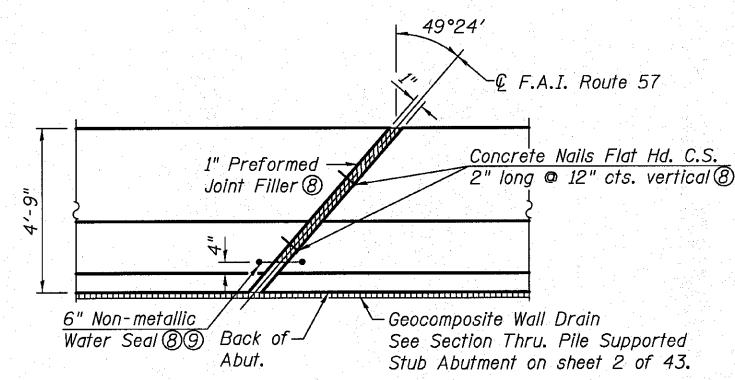
**SECTION C-C**



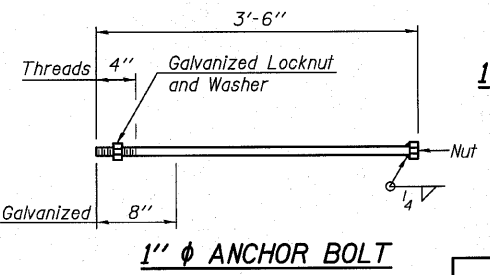
**SECTION B-B**



**VIEW A-A**



**1" PREFORMED JOINT FILLER (P.J.F.) DETAIL**



**1" ANCHOR BOLT**

**DIMENSION TABLE**

	A	B	C	D	E	F	G
NB N. Wingwall	3'-6"	4'-0 1/2"	7'-6 1/2"	1'-0"	3'-6"	4'-1 1/2"	3'-0"
SB S. Wingwall	3'-10 3/8"	4'-4"	8'-2 3/8"	1'-4 3/8"	3'-6"	4'-2 1/8"	1'-6"

- Notes:**
- Hatched area to be poured after superstructure false work has been removed. Quantity of concrete included with Concrete Superstructure.
  - Space reinforcement in cap to miss anchor bolts.
  - Pour steps monolithically with cap.
  - Quantity of concrete in end post included with Concrete Superstructure.
  - For Concrete Encasement details, see sheet 39 of 43.
  - The abutments shall have all exposed surfaces of backwalls, bridge seats, and front faces of pile caps treated with Concrete Sealer.
  - I.F. denotes inside face.  
O.F. denotes outside face.
  - Cost to be included with Concrete Structures.
  - 6" Non-Metallic Water Seal shall extend from the top of the hatched block to the bottom of the abutment.
  - Bar Splicer (E) for #5 bars shall be placed parallel to the approach pavement reinforcement.

**ABUTMENT DETAILS**  
**NB NORTH & SB SOUTH**  
**STRUCTURE NO. 028-0081 (SB)**  
**STRUCTURE NO. 028-0082 (NB)**

SHEET NO. 33	F.A.I. RTE.	SECTION	COUNTY	TOTAL SHEETS	SHEET NO.
	57	(28-3-1)VB-1	FRANKLIN	98	57
43 SHEETS	CONTRACT NO. 78068				
FED. ROAD DIST. NO. 7 ILLINOIS FED. AID PROJECT					
<p>OATES ASSOCIATES Consulting Engineers</p>	Eastport Business Center 1 100 Lanter Court, Suite 1 Collinsville, Illinois 62234 618-345-2200 Design Firm License No. 184.001115				DESIGNED JAD
					CHECKED MJP
					DRAWN JAD
					CHECKED MJP