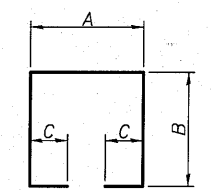


STATE OF ILLINOIS  
DEPARTMENT OF TRANSPORTATION

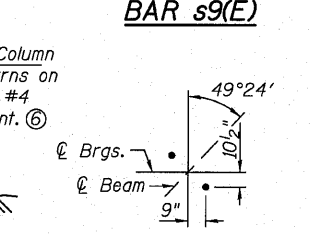
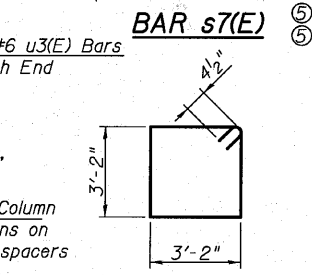
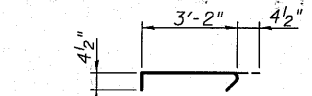
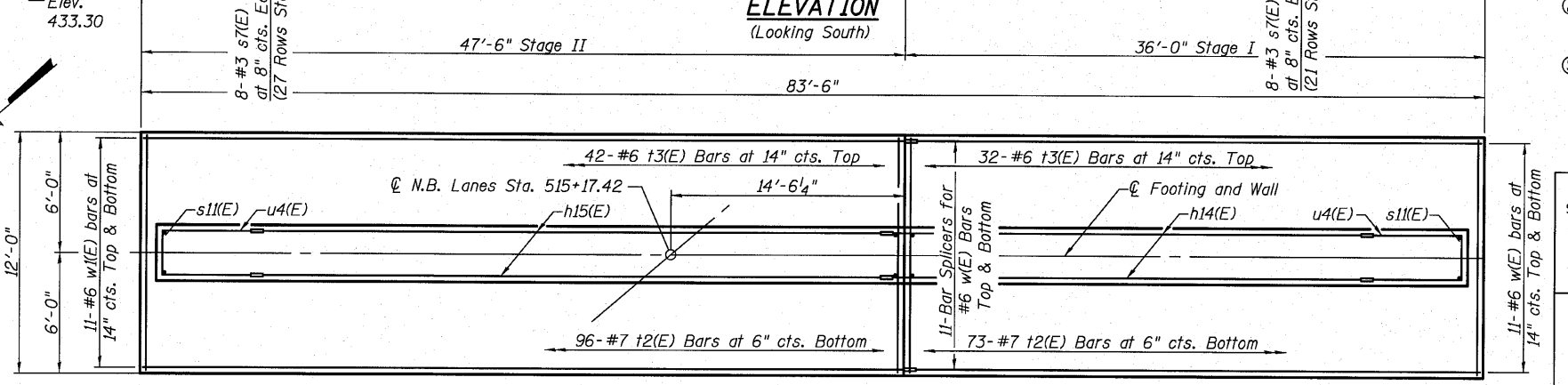
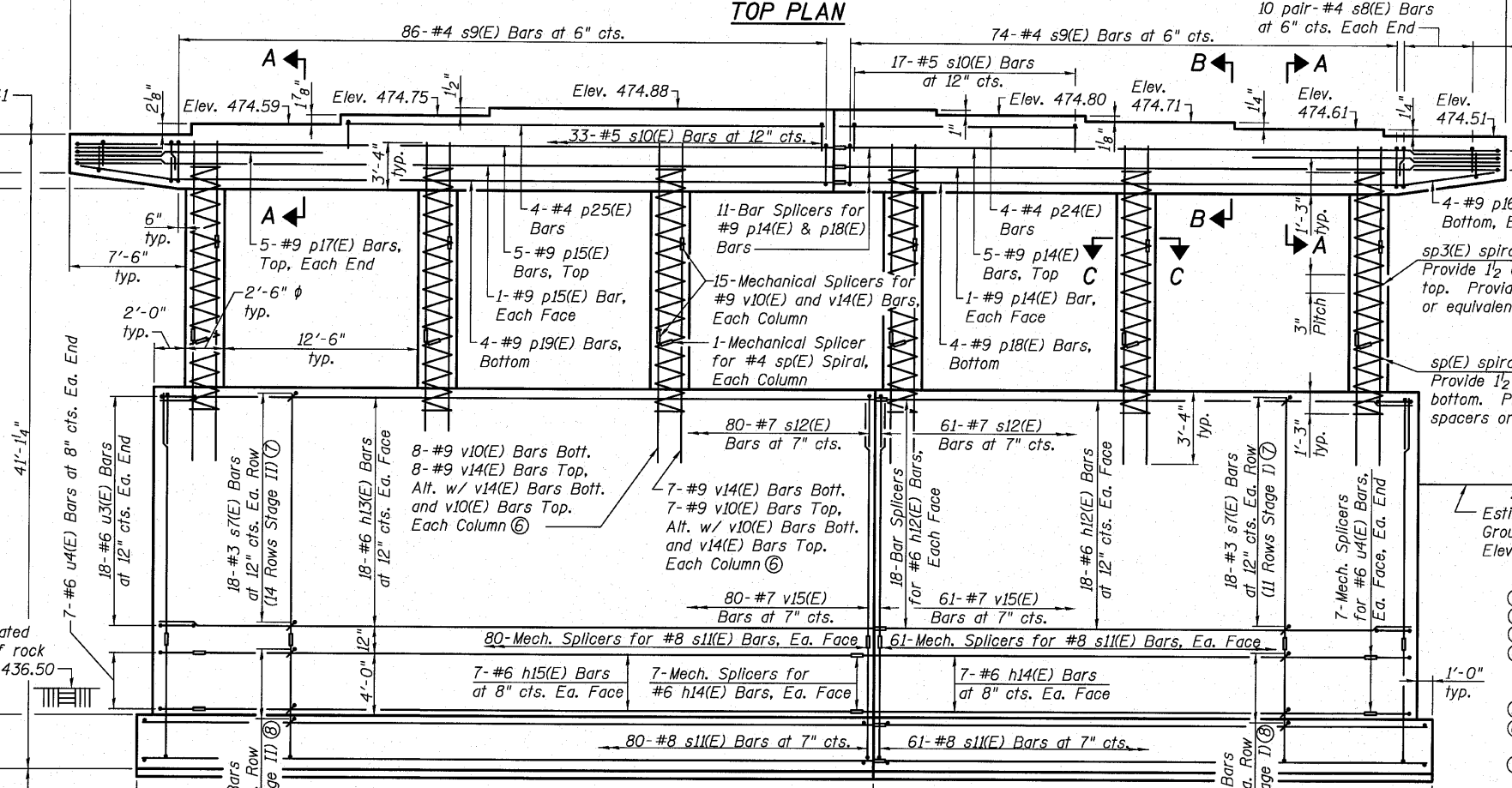
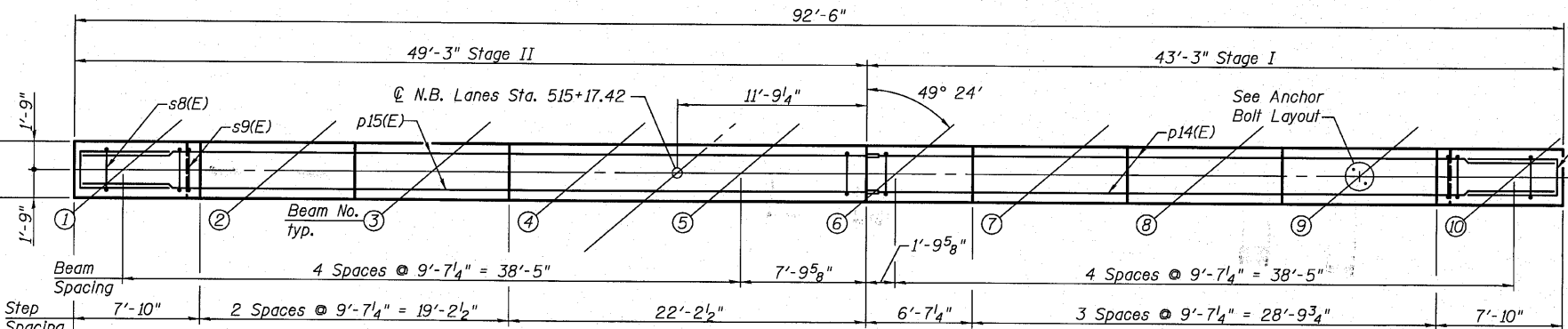
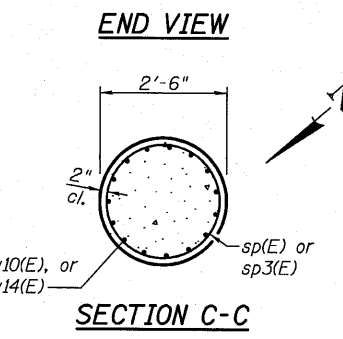
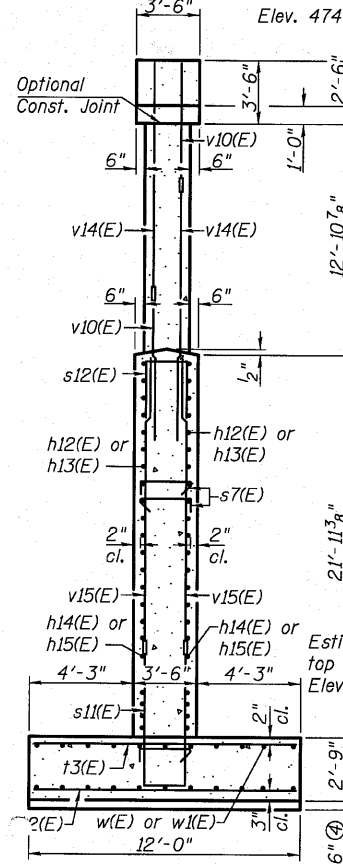
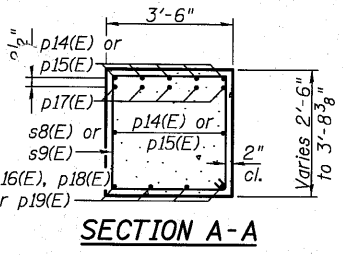
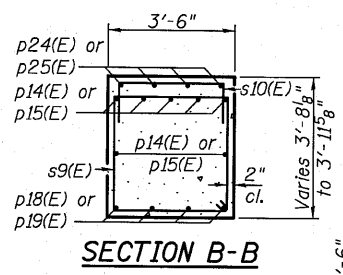


BILL OF MATERIAL

Bar	No.	Size	Length	Shape
h12(E)	36	#6	34'-8"	—
h13(E)	36	#6	46'-2"	—
h14(E)	14	#6	33'-0"	—
h15(E)	14	#6	42'-6"	—
p14(E)	7	#9	42'-11"	—
p15(E)	7	#9	48'-11"	—
p16(E)	8	#9	6'-10"	—
p17(E)	10	#9	16'-1"	—
p18(E)	4	#9	35'-11"	—
p19(E)	4	#9	41'-11"	—
p24(E)	4	#4	16'-2"	—
p25(E)	4	#4	31'-9"	—
s7(E)	834	#3	3'-11"	U
s8(E)	40	#4	7'-8"	U
s9(E)	160	#4	13'-5"	U
s10(E)	50	#5	5'-2"	U
s11(E)	141	#8	17'-1"	U
s12(E)	141	#7	8'-5"	U
sp(E)	6	#4	4'-3"	W
sp3(E)	6	#4	11'-2"	W
t2(E)	169	#7	11'-8"	—
t3(E)	74	#6	11'-8"	—
u3(E)	42	#6	10'-9"	U
u4(E)	14	#6	8'-9"	U
v10(E)	90	#9	6'-4"	—
v14(E)	90	#9	13'-3"	—
v15(E)	282	#7	17'-0"	—
w(E)	22	#6	35'-8"	—
w1(E)	22	#6	47'-2"	—
Rock Excavation for Structures			Cu. Yd.	137
Seal Coat Concrete			Cu. Yd.	18.6
Concrete Structures			Cu. Yd.	393.0
Reinforcement Bars, Epoxy Coated			Pound	48,460
Braced Excavation			Cu. Yd.	861

BARS  
A, B & C DIMENSIONS

Bar	A	B	C
s8(E)	3'-2"	2'-3"	-
s10(E)	3'-2"	1'-0"	-
s11(E)	2'-11"	7'-1"	-
s12(E)	2'-11"	2'-9"	-
u3(E)	3'-1"	2'-10"	1'-0"
u4(E)	3'-1"	2'-10"	-



- Notes:
- Space reinforcement in cap to miss anchor bolts.
  - Pour steps monolithically with cap.
  - For details of Bar Splicers, see sheet 40 of 43.
  - The footing excavations shall be undercut by 6" and immediately filled with Seal Coat Concrete to prevent degradation of the exposed foundation material surface. Undercut excavation shall be paid for as Rock Excavation for Structures.
  - Length is height of spiral.
  - Splicing of reinforcement is prohibited in the top and bottom 2'-6" of the column and bottom 4'-0" of the crashwall.
  - Space rows of s7(E) bars at with every sixth v15(E) bar outside of plastic hinge region of crashwall. Alternate s7(E) bars end for end as shown in End View.
  - Space rows of s7(E) bars at with every third v15(E) bar inside of plastic hinge region of crashwall with one line of bars cast in top of footing. Alternate s7(E) bars end for end as shown in End View.
  - All edges shall have standard 3/4" chamfer.

PIER 2 DETAILS  
NB STRUCTURE  
STRUCTURE NO. 028-0082 (NB)

SHEET NO. 38 43 SHEETS	F.A.I. RTE. 57	SECTION (28-3-DVB-1)	COUNTY FRANKLIN	TOTAL SHEETS 98	SHEET NO. 62
	FED. ROAD DIST. NO. 7 ILLINOIS FED. AID PROJECT			CONTRACT NO. 78068	
OATES ASSOCIATES Consulting Engineers Eastport Business Center 1 100 Lanter Court, Suite 1 Collinsville, Illinois 62234 618-345-2200 Design Firm License No. 184.001115			DESIGNED DGL CHECKED MJP DRAWN DGL CHECKED MJP		