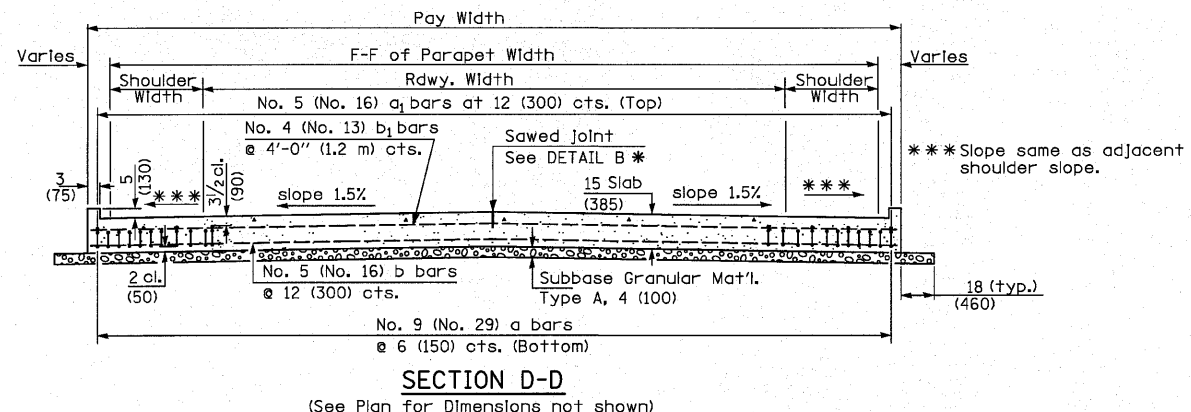
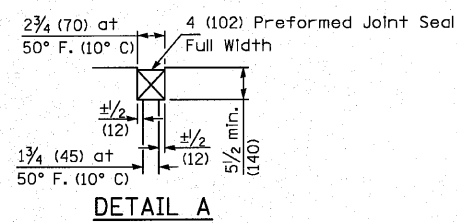
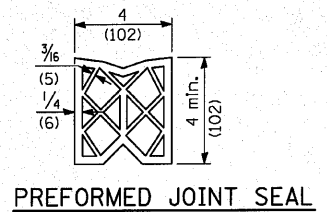
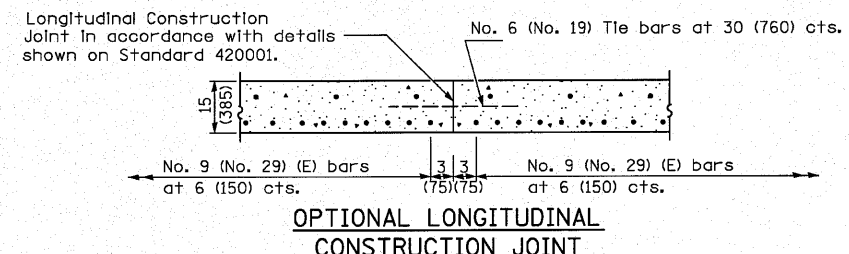


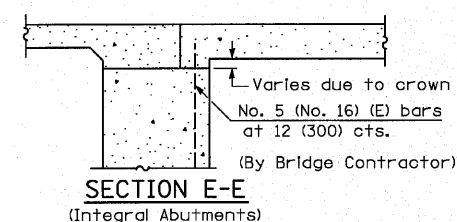
**SECTION C-C**  
 ⓐ Stagger No. 9 (No. 29) a bars as shown on plan - full width



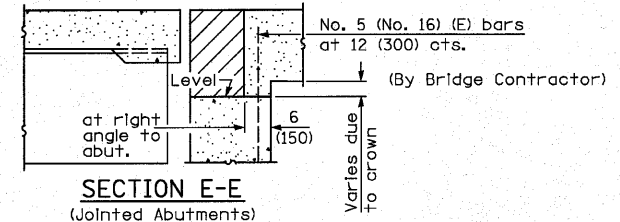
**SECTION D-D**  
 (See Plan for Dimensions not shown)



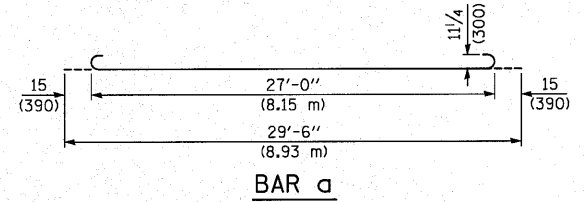
**OPTIONAL LONGITUDINAL CONSTRUCTION JOINT**  
 As approved by the Engineer, the Contractor may elect to reduce the widths of pour by use of the Optional Longitudinal Construction Joint shown. Joints shall be located at the edge of a traffic lane.



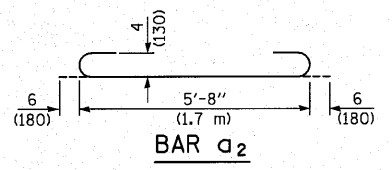
**SECTION E-E**  
 (Integral Abutments)



**SECTION E-E**  
 (Jointed Abutments)



**BAR a**



**BAR a2**

**DESIGN STRESSES**  
 $f_y = 60,000$  p.s.i. (400 MPa)  
 $f'c = 3,500$  p.s.i. (24 MPa)  
 $n = 8.5$

**BRIDGE APPROACH PAVEMENT (SPECIAL)**

FILE NAME =	USER NAME = default	DESIGNED -	REVISED -	<b>STATE OF ILLINOIS DEPARTMENT OF TRANSPORTATION</b>	<b>DETAILS I-57 OVER UNION PACIFIC RAILROAD</b>			F.A.I. RTE.	SECTION	COUNTY	TOTAL SHEETS	SHEET NO.
H:\P\25866p2\Technical_Production\Civil\Microstation\Sec283VB1\detail1s283vb.dgn		DRAWN -	REVISED -		57	(28-3-1)VB-1	FRANKLIN	98	70			
PLOT SCALE = 5/8,000' / IN.		CHECKED -	REVISED -		CONTRACT NO. 78068							
PLOT DATE = 8/13/2010		DATE -	REVISED -		SCALE:	SHEET NO.	OF SHEETS	STA.	TO STA.	FED. ROAD DIST. NO.	ILLINOIS FED. AID PROJECT	