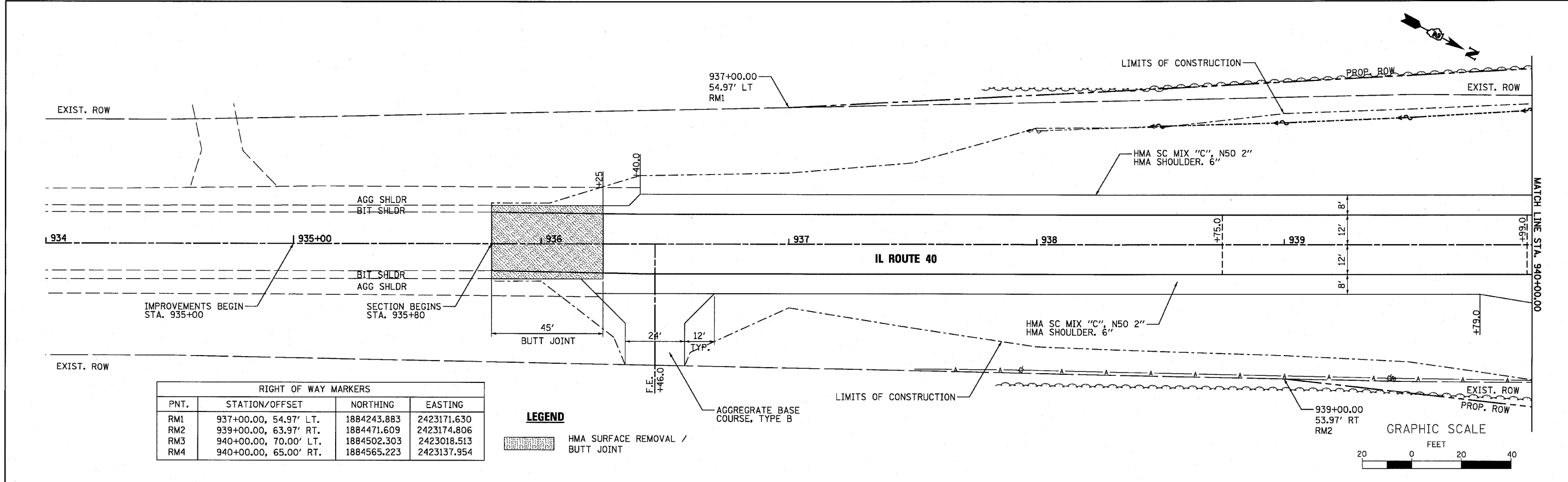


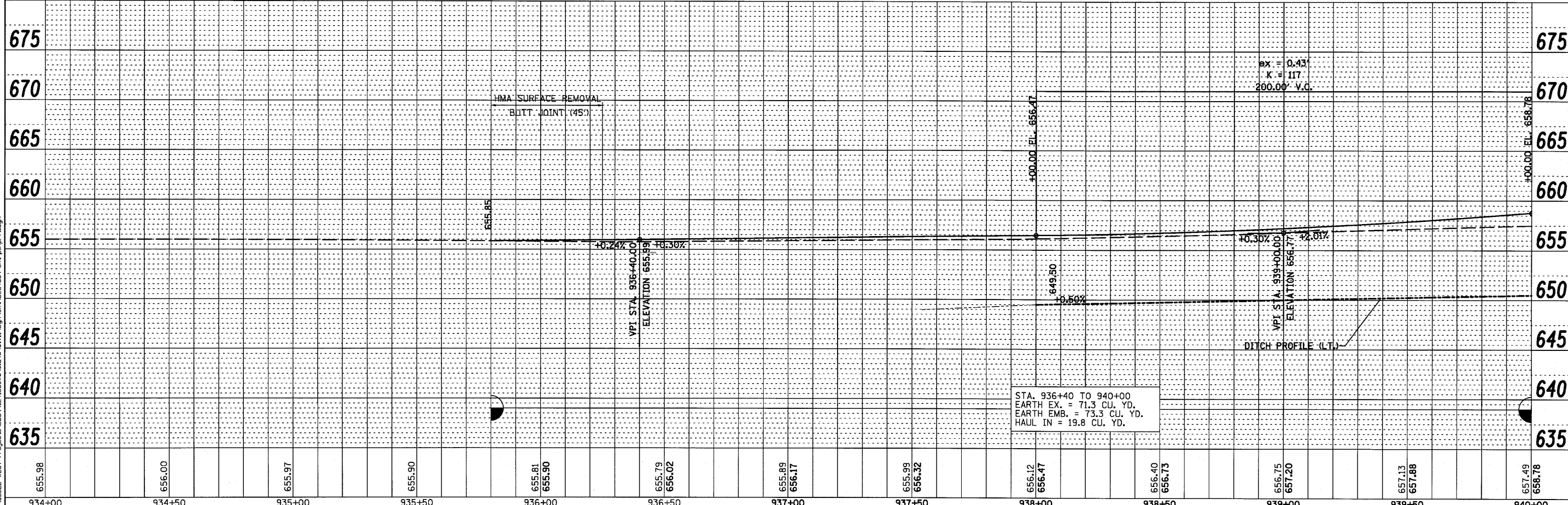
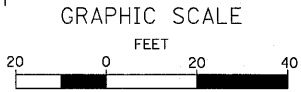
DATE	
BY	
REVISIONS	
NO.	
DATE	
DESCRIPTION	
APPROVED	
NO.	
DATE	
DESCRIPTION	

DATE	
BY	
REVISIONS	
NO.	
DATE	
DESCRIPTION	
APPROVED	
NO.	
DATE	
DESCRIPTION	



RIGHT OF WAY MARKERS			
PNT.	STATION/OFFSET	NORTHING	EASTING
RM1	937+00.00, 54.97' LT.	1884243.883	2423171.630
RM2	939+00.00, 63.97' RT.	1884471.609	2423174.806
RM3	940+00.00, 70.00' LT.	1884502.303	2423018.513
RM4	940+00.00, 65.00' RT.	1884565.223	2423137.954

LEGEND
 HMA SURFACE REMOVAL / BUTT JOINT
 AGGREGATE BASE COURSE, TYPE B



WILLS BURKE KELSEY ASSOCIATES LTD.
 116 West Main Street, Suite 201
 St. Charles, Illinois 60174
 (830) 443-7756

USER NAME = *USER*	DESIGNED -	REVISED -
	DRAWN -	REVISED -
PLOT SCALE =	CHECKED -	REVISED -
PLOT DATE = 8/2/2010	DATE = 8/6/10	REVISED -

STATE OF ILLINOIS
DEPARTMENT OF TRANSPORTATION

PLAN & PROFILE			
SCALE:	SHEET NO. 24 OF 90 SHEETS	STA.	TO STA.

F.A.P. RTE. 646	SECTION 8BR-1	COUNTY WHITESIDE	TOTAL SHEETS 90	SHEET NO. 24
CONTRACT NO. 84854				
FED. ROAD DIST. NO. 2 [ILLINOIS] FED. AID PROJECT				

FILE NAME = P:\CIBREL_MEST_Proj\mes-2009\121006_W05_IL40_C.v1\0gn\Shd\284854-shd-plp.rpt.dgn