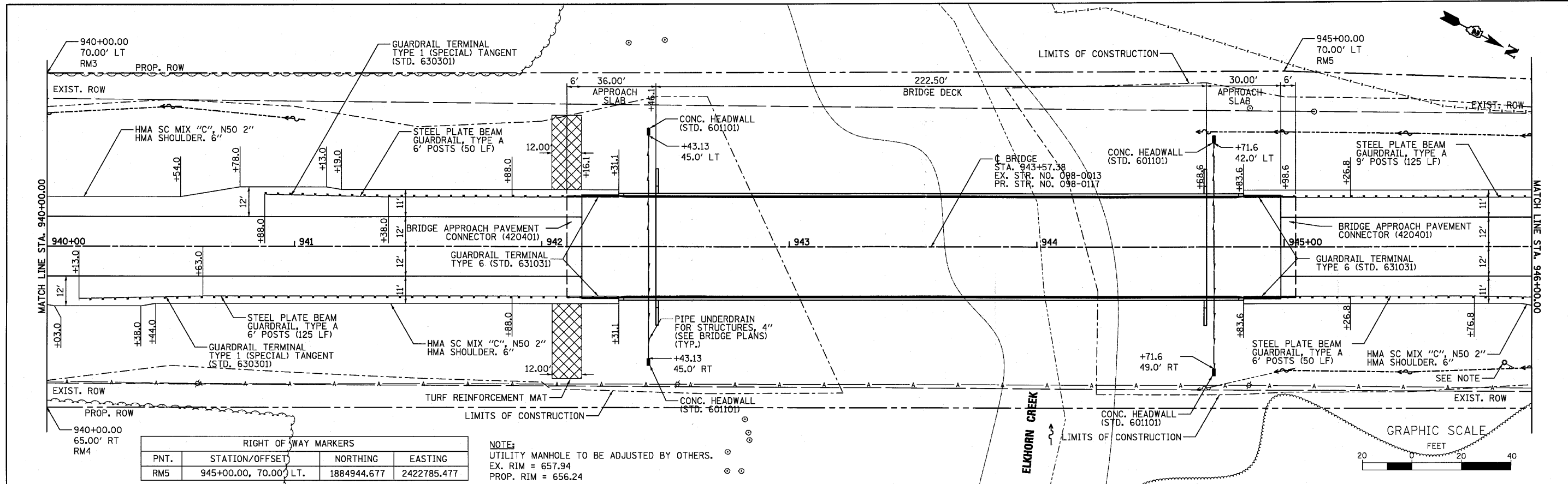


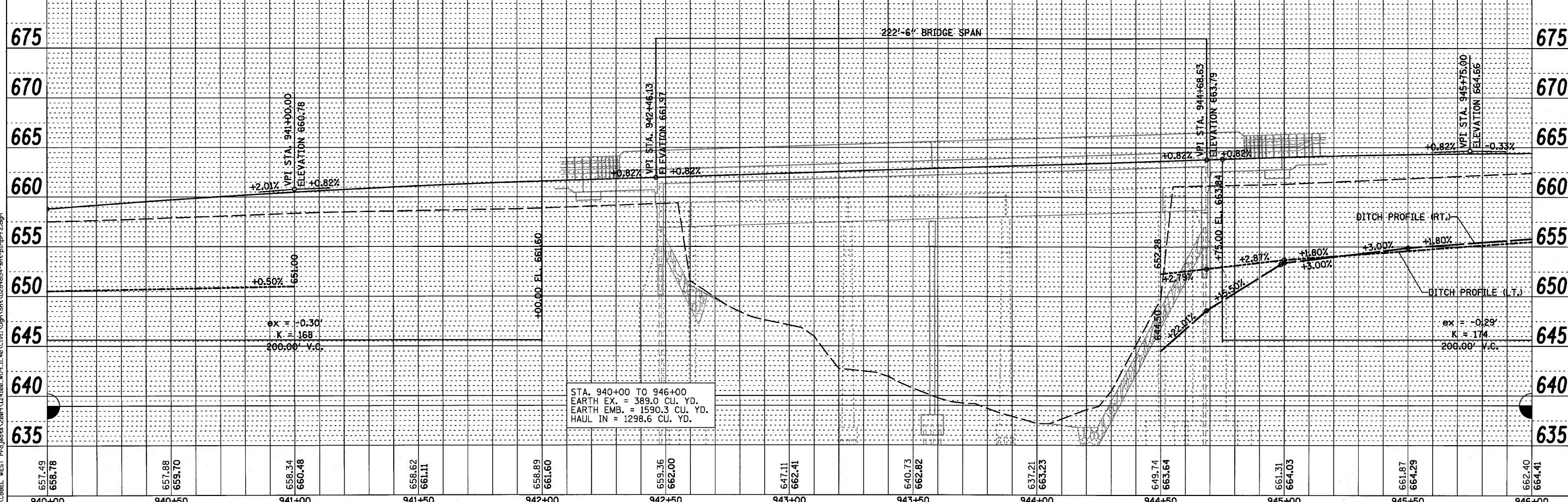
DATE	
BY	
REVIEWED	
PLANNED	
NOTED	
NO.	
PLAN	
NO.	

DATE	
BY	
REVIEWED	
PLANNED	
NOTED	
NO.	
PROFILE	
NO.	



RIGHT OF WAY MARKERS			
PNT.	STATION/OFFSET	NORTHING	EASTING
RM5	945+00.00, 70.00' LT.	1884944.677	2422785.477

NOTE:
UTILITY MANHOLE TO BE ADJUSTED BY OTHERS.
EX. RIM = 657.94
PROP. RIM = 656.24



STA. 940+00 TO 946+00
EARTH EX. = 389.0 CU. YD.
EARTH EMB. = 1590.3 CU. YD.
HAUL IN = 1298.6 CU. YD.

657.49 658.78	657.88 659.70	658.34 660.48	658.62 661.11	658.89 661.60	659.36 662.00	647.11 662.41	640.73 662.82	637.21 663.23	649.74 663.64	661.31 664.03	661.87 664.29	662.40 664.41
940+00	940+50	941+00	941+50	942+00	942+50	943+00	943+50	944+00	944+50	945+00	945+50	946+00

WILLS BURKE KELSEY ASSOCIATES LTD.
116 West Main Street, Suite 201
St. Charles, Illinois 60174
(630) 443-7755

USER NAME = #USER#	DESIGNED -	REVISED -
PLOT SCALE =	DRAWN -	REVISED -
PLOT DATE = 8/2/2010	CHECKED -	REVISED -
	DATE - 8/6/10	REVISED -

**STATE OF ILLINOIS
DEPARTMENT OF TRANSPORTATION**

PLAN & PROFILE

F.A.P. RTE.	SECTION	COUNTY	TOTAL SHEETS	SHEET NO.
646	88R-1	WHITESIDE	90	25
CONTRACT NO. 84854				
FED. ROAD DIST. NO. 2 ILLINOIS FED. AID PROJECT				

SCALE: SHEET NO. 25 OF 90 SHEETS STA. TO STA.