

# STAGE 1

### GENERAL NOTES:

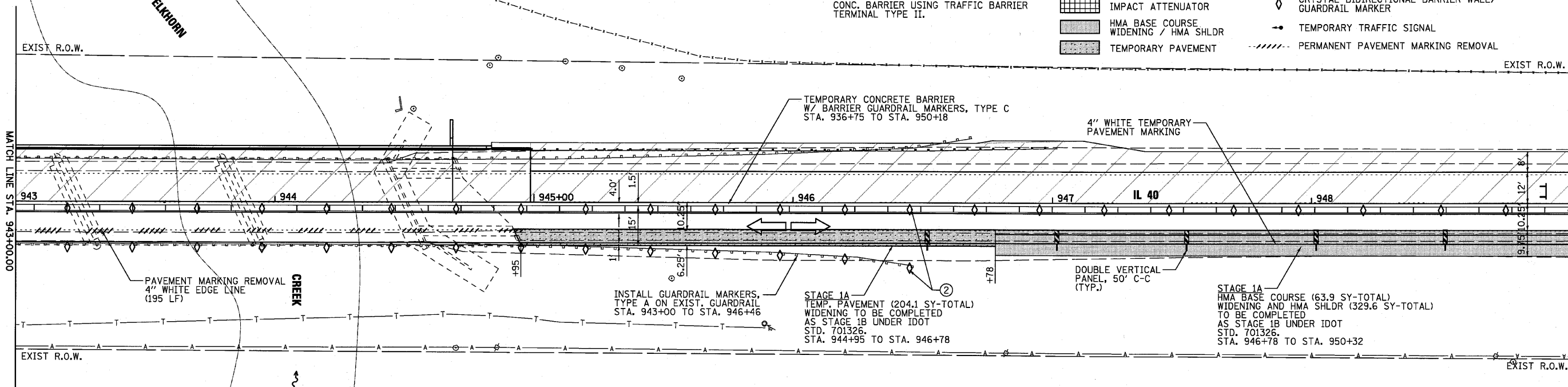
1. SEE IDOT STANDARD 701321, LANE CLOSURE, 2L, 2W, BRIDGE REPAIR WITH BARRIER FOR ADDITIONAL INFORMATION.
2. SEE MOT TYPICAL SECTIONS FOR ADDITIONAL INFORMATION.
3. AGGREGATE SHOULDER SHALL BE PLACED ADJACENT TO THE TEMPORARY PAVEMENT AND BE PAID FOR AS ITEM 48102100, AGGREGATE WEDGE SHOULDER, TYPE B.

### STAGING PLAN NOTES:

- ① TYPE III BARRICADE TO BE PLACED WHEN NO WORK IS BEING PERFORMED.
- ② BARRIER WALL/GUARDRAIL MARKERS AT 25' cts. SEE STANDARDS 704001 & 635011.
- ③ WHEN TEMP. BRIDGE RAIL IS SPECIFIED, IT SHALL BE CONNECTED TO THE TEMP. CONC. BARRIER USING TRAFFIC BARRIER TERMINAL TYPE II.

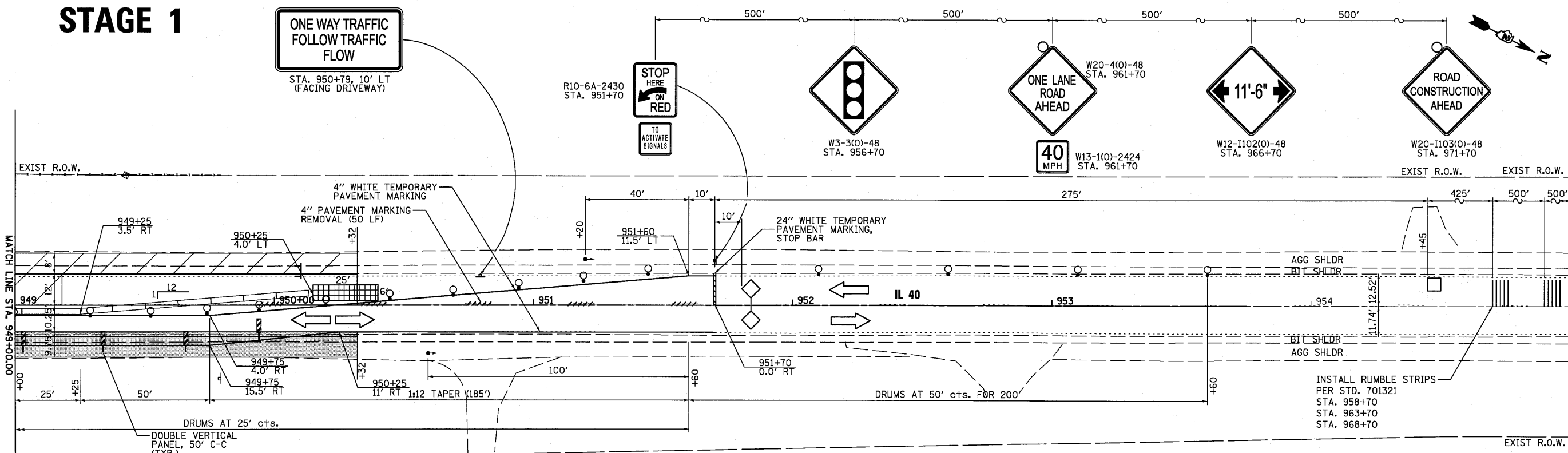
### LEGEND

- WORK ZONE
- TYPE III BARRICADE WITH FLASHING LIGHT
- DETECTOR LOOPS
- IMPACT ATTENUATOR
- HMA BASE COURSE WIDENING / HMA SHLDR
- TEMPORARY PAVEMENT
- SIGN (WORK ZONE)
- DRUM WITH STEADY BURN LIGHT OR BARRICADE
- TEMPORARY CONCRETE BARRIER
- DOUBLE VERTICAL PANEL
- CRYSTAL BIDIRECTIONAL BARRIER WALL/GUARDRAIL MARKER
- TEMPORARY TRAFFIC SIGNAL
- PERMANENT PAVEMENT MARKING REMOVAL



# STAGE 1

**ONE WAY TRAFFIC FOLLOW TRAFFIC FLOW**  
 STA. 950+79, 10' LT (FACING DRIVEWAY)



FILE NAME = P:\CIBBEL WEST Projects\2009\121006\_W09\_IL40\Civil\09m\Shk\028-6854-shk-staging1-2.dgn

**WILLS BURKE KELSEY ASSOCIATES LTD.**  
 116 West Main Street, Suite 201  
 St. Charles, Illinois 60174  
 (630) 443-7755

USER NAME = *USER*	DESIGNED -	REVISED -
PLOT SCALE =	DRAWN -	REVISED -
PLOT DATE = 8/2/2010	CHECKED -	REVISED -
	DATE - 8/6/10	REVISED -

**STATE OF ILLINOIS  
 DEPARTMENT OF TRANSPORTATION**

<b>MAINTENANCE OF TRAFFIC STAGE 1</b>	
SCALE:	SHEET NO. 28 OF 90 SHEETS STA. TO STA.

F.A. RTE.	SECTION	COUNTY	TOTAL SHEETS	SHEET NO.
646	8BR-1	WHITESIDE	90	28
CONTRACT NO. 84854				
FED. ROAD DIST. NO. 2 ILLINOIS FED. AID PROJECT				