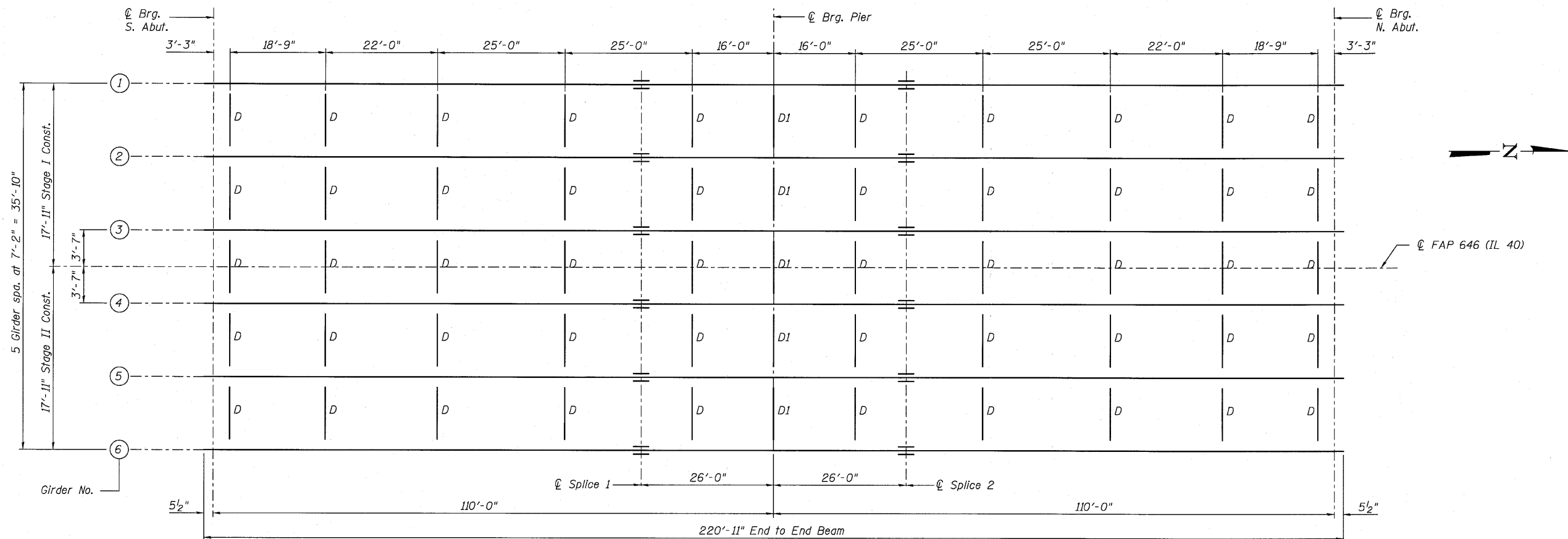
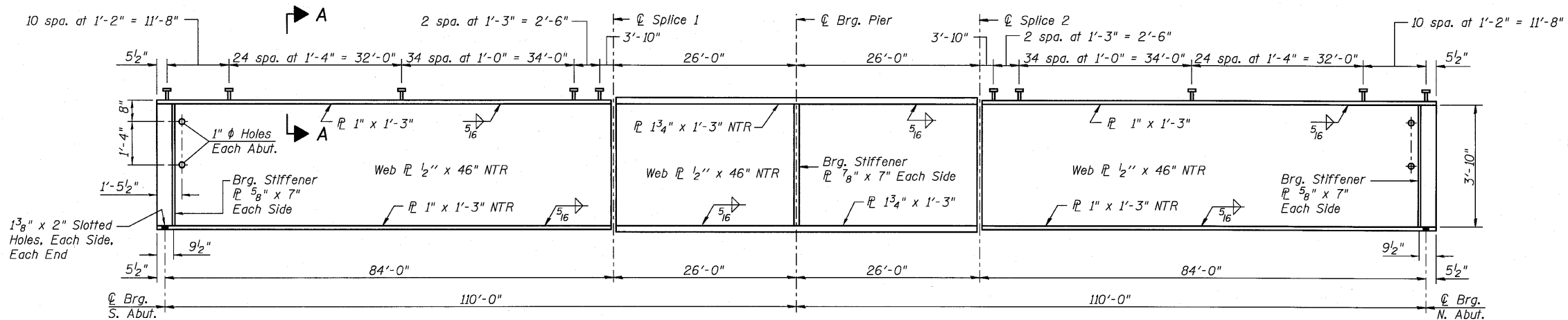


STATE OF ILLINOIS
DEPARTMENT OF TRANSPORTATION



FRAMING PLAN



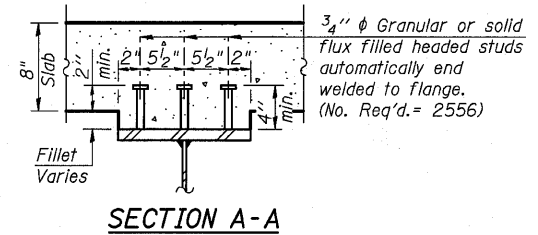
GIRDER ELEVATION

All plates and bearing stiffeners shall be AASHTO M 270 Grade 50.

Notes:

Load carrying components designated "NTR" shall conform to the Supplemental Requirements for Notch Toughness, Zone 2.

All cross frames or diaphragms shall be installed as steel is erected and secured with erection pins and bolts except as otherwise noted. Individual cross frames or diaphragms at supports may be temporarily disconnected to install bearing anchor rods.



SECTION A-A

DESIGNED -	AEU
CHECKED -	DLS
DRAWN -	AWH
CHECKED -	AEU

WILLS BURKE KELSEY ASSOCIATES LTD.
116 West Main Street, Suite 201
St. Charles, Illinois 60174
(630) 443-7755

SHEET NO. 15
26 SHEETS

F.A.P. RTE.	SECTION	COUNTY	TOTAL SHEETS	SHEET NO.
646	8BR-1	WHITESIDE	90	49
CONTRACT NO. 84854				
ILLINOIS FED. AID PROJECT				

FILE NAME: P:\CIBEL\WEST - Projects\2003\241000_M05_IL40\Structural\Drawings\84854-01E-Struct-Steel.dgn