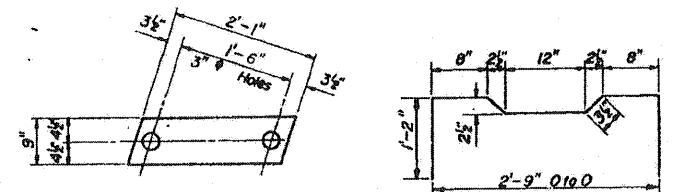


STATE OF ILLINOIS

DIVISION OF HIGHWAYS

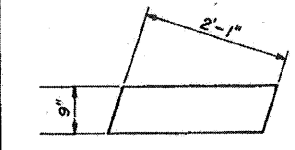
ROUTE NO.	SECTION	COUNTY	TOTAL SHEETS	SHEET NO.
640	SBR	WHITESIDE	11	4

SHEET NO. 2
9 SHEETS

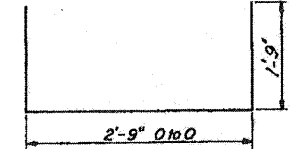


FABRIC BEARING PAD

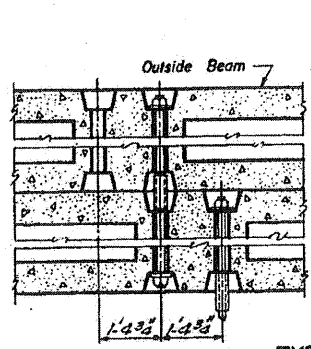
A₁ BAR



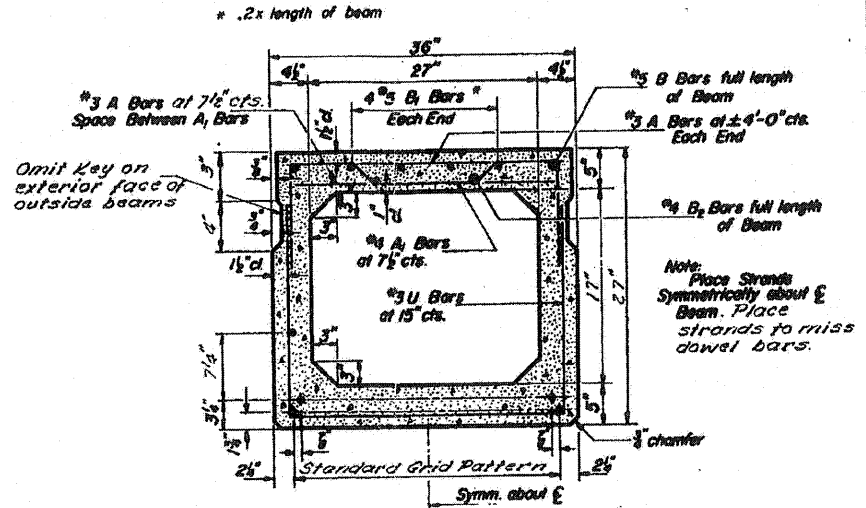
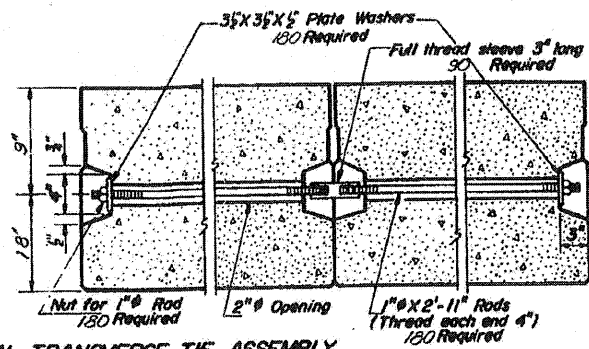
GRAPHITED ASBESTOS BEARING PAD



U & U BAR

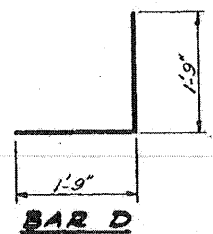


TYPICAL TRANSVERSE TIE ASSEMBLY

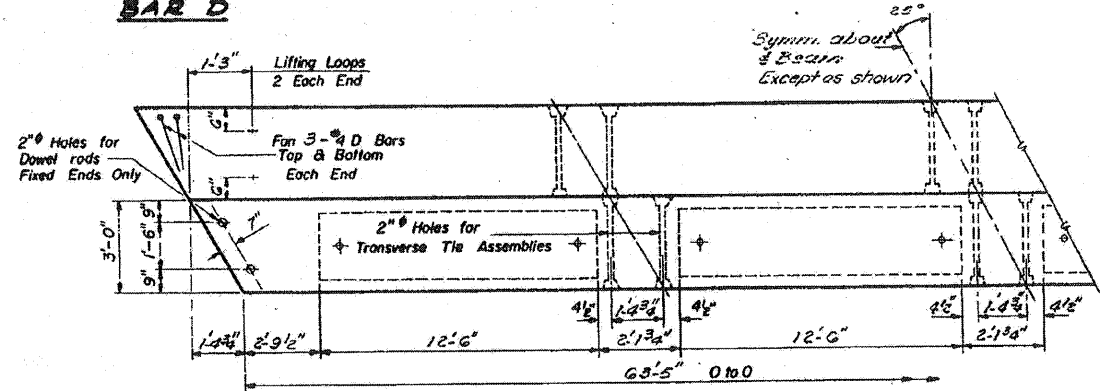


TYPICAL SECTION

21 - 7/8" Strands Each Strand Stressed to 21,700 lbs.
5 - Strands 1 1/2" up 10 - Strands 3/4" up 2 - Strands 10 1/2" up

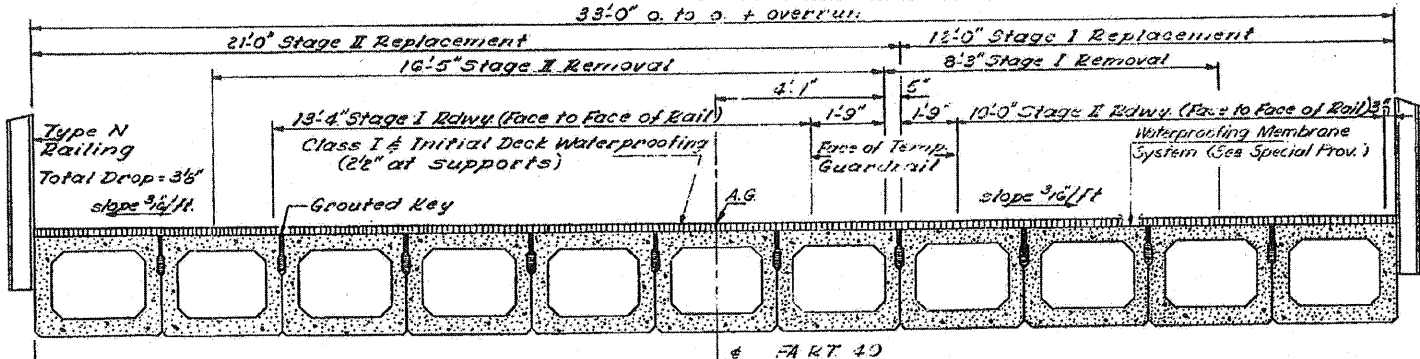


BAR D



PLAN

See Exp. End Detail Sheet #3



CROSS SECTION (Looking South)

BAR LIST

Bar	No	Size	Length	Shops
0	12	#5	21'6"	
01	12	#5	23'2"	

GENERAL NOTES

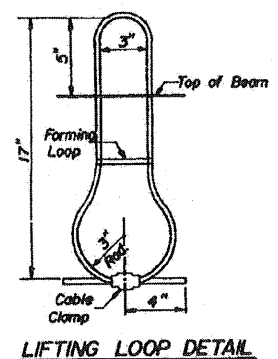
Prestressing steel shall be non-galvanized high strength, stress-relieved 7-wire strand Grade 270. The nominal diameter shall be 7/8" and the nominal cross-sectional area shall be 0.115 sq. in. Lifting loops shall be 2" diameter 6x25 class wire rope with fiber core and shall have a minimum ultimate tensile strength of 5,500 lbs. The 1" rods in the transverse tie assembly shall be tightened to a snug fit and the threads set. Pockets that receive transverse tie bar on outside beam shall be filled with grout after transverse tie assembly is in place. Longitudinal shear keys shall be packed with a very dry mix of 2-1 sand and P.C. mortar. After beams have been erected, holes for the dowel anchors shall be drilled into the sub-structure and the anchor dowels shall be grouted in place. Transverse tie rods shall be AASHTO M227, Grade 70-80. Dowel rods shall be AASHTO M227 or AASHTO M31. After fabrication the transverse tie assemblies (tie rods, nuts, washers and sleeves) shall be hot-dipped galvanized in accordance with AASHTO Designation M232. Cost of reinforcement and accessories cast into the beam, of bearing pads, of armor angles, and of grouting longitudinal shear keys is included in unit price bid for "Precast Prestressed Concrete Deck Beams."

Note: See sheet #6 for location of railing inserts on outside beams.

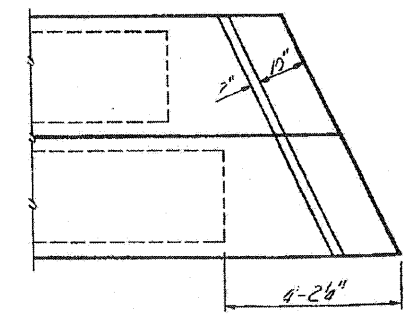
BILL OF MATERIAL

Item	Unit	Total
Precast Prestressed Conc. Deck Beams (27)	Sq. Ft.	6276
Removal of Existing Superstructure	Each	1
Class X Concrete	Cu. Yd.	33
Reinforcement Bars	Pound	470
Structural Steel	Pound	7100

SUPERSTRUCTURE
PART 40 - SEC. 8-22
WHITESIDE COUNTY
STATION 185+33.61



LIFTING LOOP DETAIL



EXPANSION END OF BEAMS
(Expansion ends at Piers 1 & 2, also the same for fixed end at Pier 2)
See Detail "A" Sht. #3.

DESIGNED	Chas. J. Ober	EXAMINED	APR 9 1971
CHECKED	Shen, T. A. F. A.	PASSED	
DRAWN	J. Kessler	APPROVED	
CHECKED	ST		

PD-3-R 11-19-65 Rev. 5-20-68

WILLS BURKE KELSEY ASSOCIATES LTD.
116 West Main Street, Suite 201
St. Charles, Illinois 60174
(630) 443-7755

USER NAME = @USER@	DESIGNED -	REVISED -
PLOT SCALE =	DRAWN -	REVISED -
PLOT DATE = 8/2/2010	CHECKED -	REVISED -
	DATE - 8/6/10	REVISED -

STATE OF ILLINOIS
DEPARTMENT OF TRANSPORTATION

EXISTING STRUCTURE PLANS
FOR REFERENCE ONLY

SCALE: SHEET NO. 62 OF 90 SHEETS STA. TO STA.

F.A.P. RTE.	SECTION	COUNTY	TOTAL SHEETS	SHEET NO.
646	8BR-1	WHITESIDE	90	62

CONTRACT NO. 84854

EXISTING STRUCTURE PLANS - FOR REFERENCE ONLY