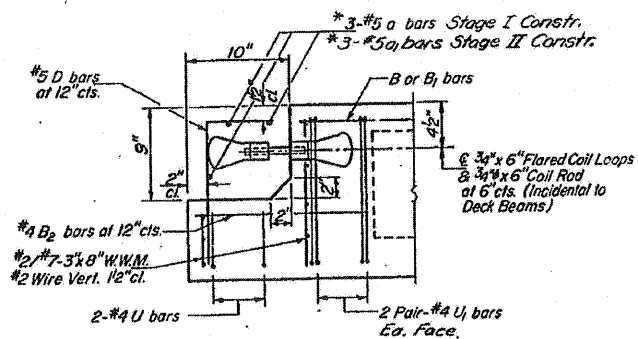
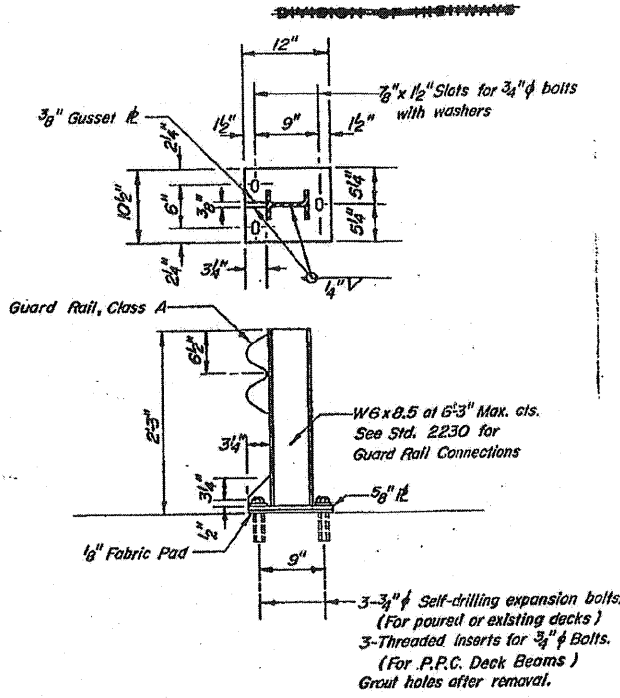


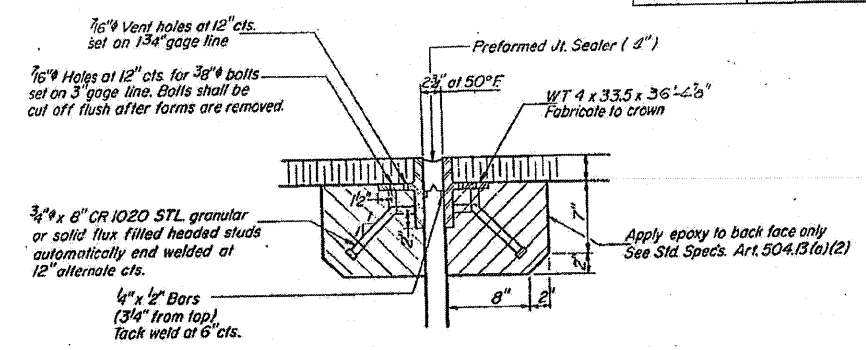
| | | | | | |
|-----------------------|---------|-----------|--------------|-----------|---------------------------|
| ROUTE NO. | SECTION | COUNTY | TOTAL SHEETS | SHEET NO. | SHEET NO. 3 |
| FA 40 | BBR | WHITESIDE | 11 | 5 | 9 SHEETS |
| FED. ROAD DIST. NO. 2 | | | | | ILLINOIS FED. AID PROJECT |



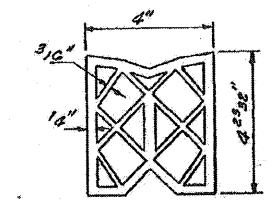
END OF BEAM (EXP. END)
 (Dimensions are at right angles)
 Also for fixed end @ Pier 2
 * See Sheet #2 for Bar List



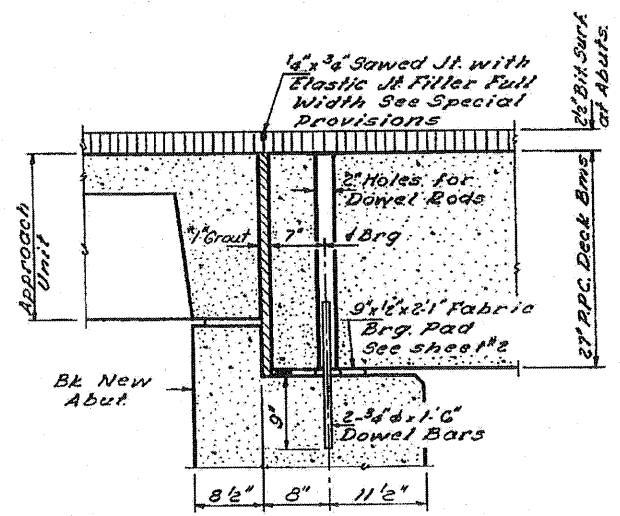
TEMPORARY GUARD RAIL DETAIL
 See Special Provisions



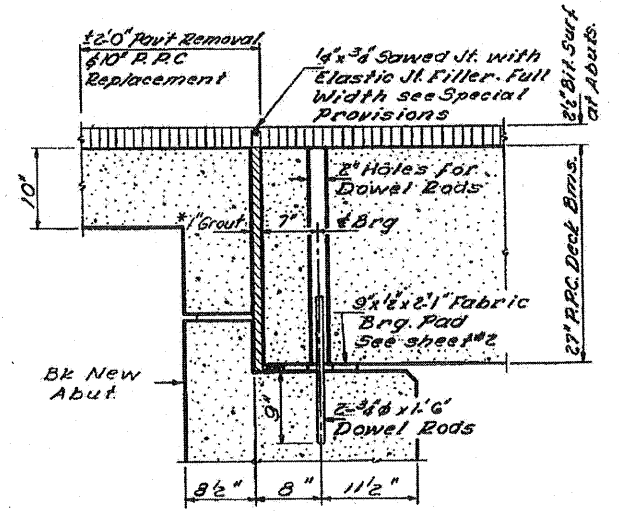
NOTE: Dimensions are at right angles.
 Hatched areas to be poured after beams have been erected and joints grouted.
 Ends of beams shall be aligned at the expansion joints. Any linear variation in the beam lengths shall be placed at the fixed joint.
 See End of Beam Detail for reinforcement.



PREFORMED JT. SEALER (4")

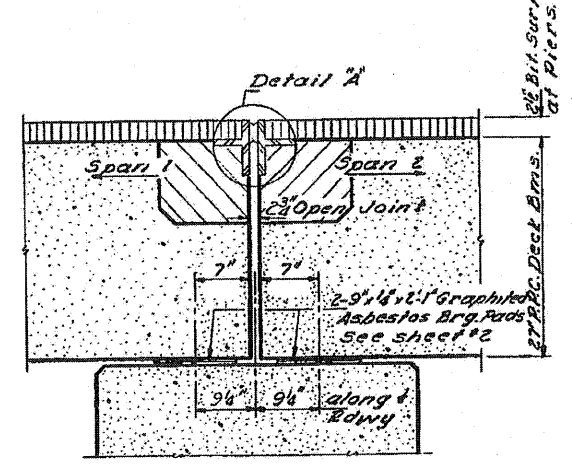


SECTION AT ABUTMENTS WITH PRECAST APPR. UNITS
 Dimensions at rt. L's

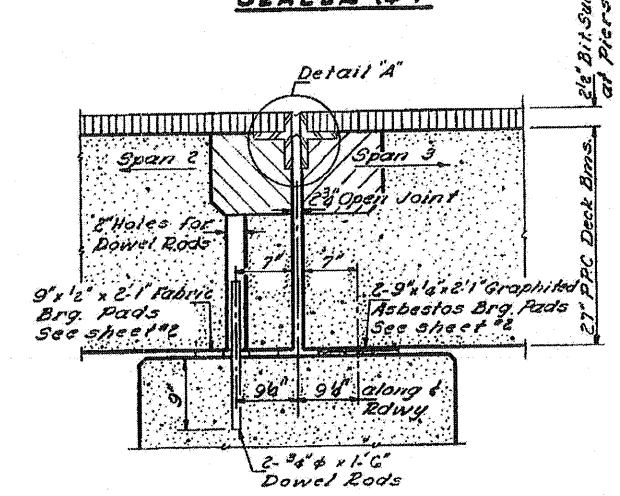


SECTION AT ABUTMENTS
 Dimensions at rt. L's

* 1" joint shall be packed with a very dry mix of 2:1 sand and P.C. mortar. This dimension may vary plus or minus to accommodate tolerance in beam lengths.



SECTION AT PIER 1
 Dimensions are at rt. L's except where noted



SECTION AT PIER 2
 Dimensions at rt. L's except where noted

SUPERSTRUCTURE DETAILS
 FA 40 SEC. 8 BR
 WHITESIDE COUNTY
 STATION 1876+23.67

EXISTING STRUCTURE PLANS - FOR REFERENCE ONLY

FILE NAME = PACBBEL WEST Proj: pacbbel\22095\124102_009_1L40\Civil\Drawings\SH\A\284684-dwg.mxd

WILLS BURKE KELSEY ASSOCIATES LTD.
 118 West Main Street, Suite 201
 St. Charles, Illinois 60174
 (630) 443-7755

| | | |
|----------------------|---------------|-----------|
| USER NAME = #USER# | DESIGNED - | REVISED - |
| PLOT SCALE = | DRAWN - | REVISED - |
| PLOT DATE = 8/2/2010 | CHECKED - | REVISED - |
| | DATE - 8/6/10 | REVISED - |

STATE OF ILLINOIS
DEPARTMENT OF TRANSPORTATION

EXISTING STRUCTURE PLANS
FOR REFERENCE ONLY

SCALE: SHEET NO. 63 OF 90 SHEETS STA. TO STA.

| | | | | |
|--------------------|---------|-----------|---------------------------|-----------|
| F.A.P. RTE. | SECTION | COUNTY | TOTAL SHEETS | SHEET NO. |
| 646 | BBR-1 | WHITESIDE | 90 | 63 |
| CONTRACT NO. 84854 | | | ILLINOIS FED. AID PROJECT | |