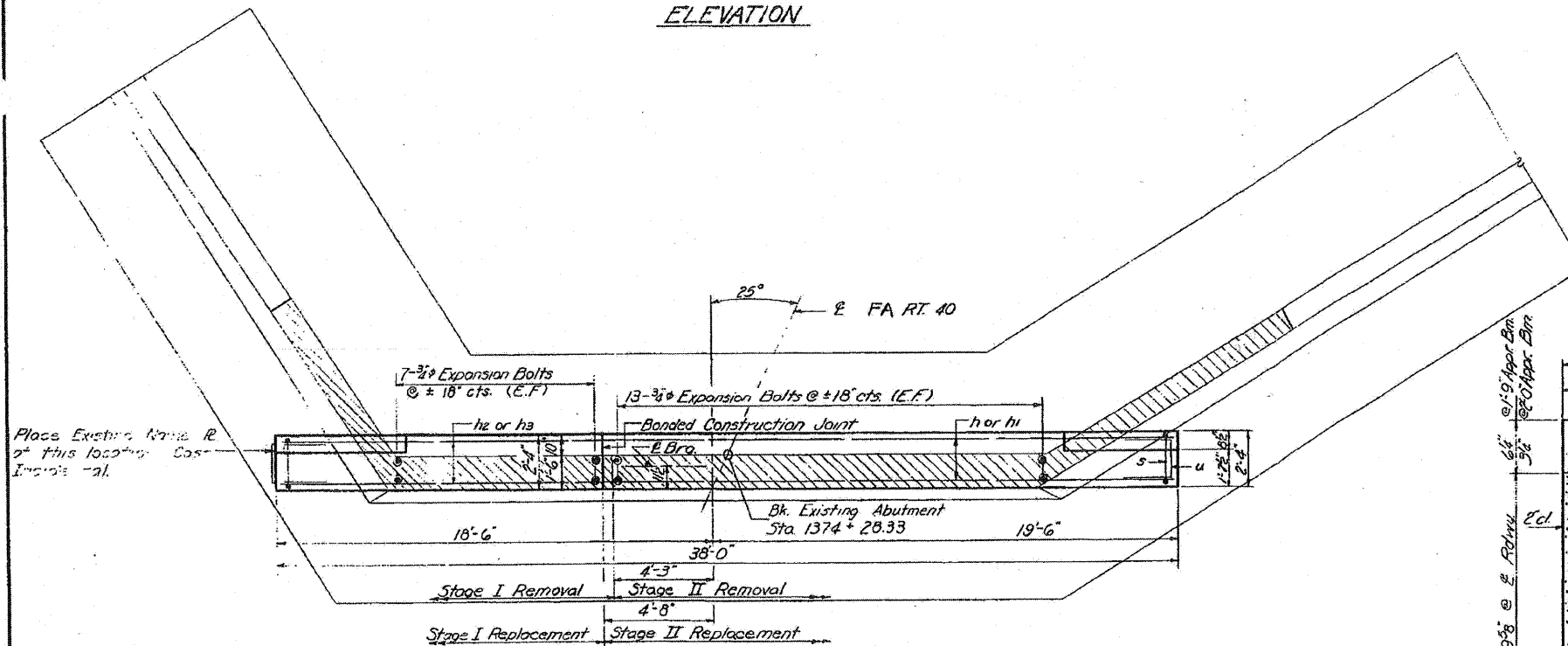
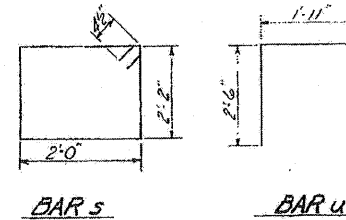
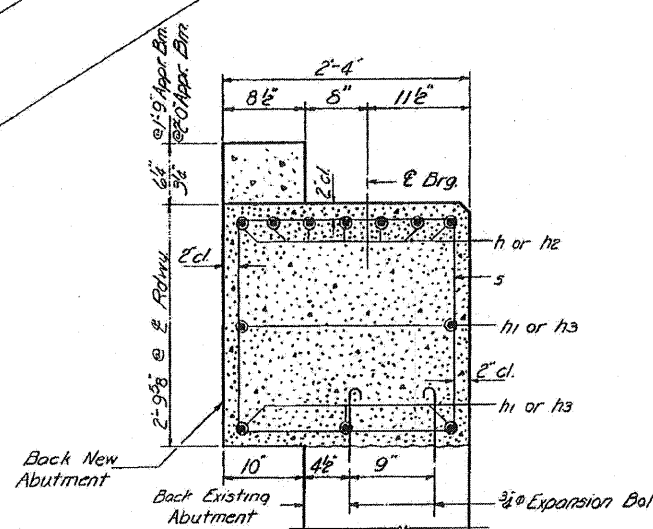


ELEVATION



PLAN



SECTION THRU ABUTMENT
(Dimensions @ Ft. ±)

TWO ABUTMENTS
BILL OF MATERIAL

Bar	No.	Size	Length	Shape
h	7	#9	24'-0"	
h1	5	#5	24'-0"	
h2	7	#9	14'-0"	
h3	5	#5	14'-0"	
s	38	#5	9'-1"	□
u	6	#6	6'-11"	□
Class X Concrete				Cu. Yds. 8.8
Reinforcement Bars				Lbs. 1530
Expansion Bolts (#8)				Each 40
Concrete Removal				Cu. Yds. 4.0

NORTH ABUTMENT
FA RT. 40 SEC. 8BR
WHITESIDE COUNTY
STA. 1375 + 23.67

NOTE:
Hatched area indicates Concrete Removal Reinforcement extending into removed area shall be cleaned and incorporated into the new construction.
Expansion Bolts shall be anchored in sound concrete.
All edges shall have standard 3/4" chamfers.

DESIGNED: Charles P. Wilkins
CHECKED: S.M.E. P.A. P.K.
DRAWN: G.E. Wilkins
CHECKED: C.G. S.T.

EXAMINED: [Signature] 8/6/10
PASSED: [Signature]
APPROVED: [Signature]

FILE NAME = P:\CBBEL\MEST_Proj\2009\124102_MPS_IL_48\Civil\Drawings\264854-ahht-mac7.dgn

EXISTING STRUCTURE PLANS - FOR REFERENCE ONLY