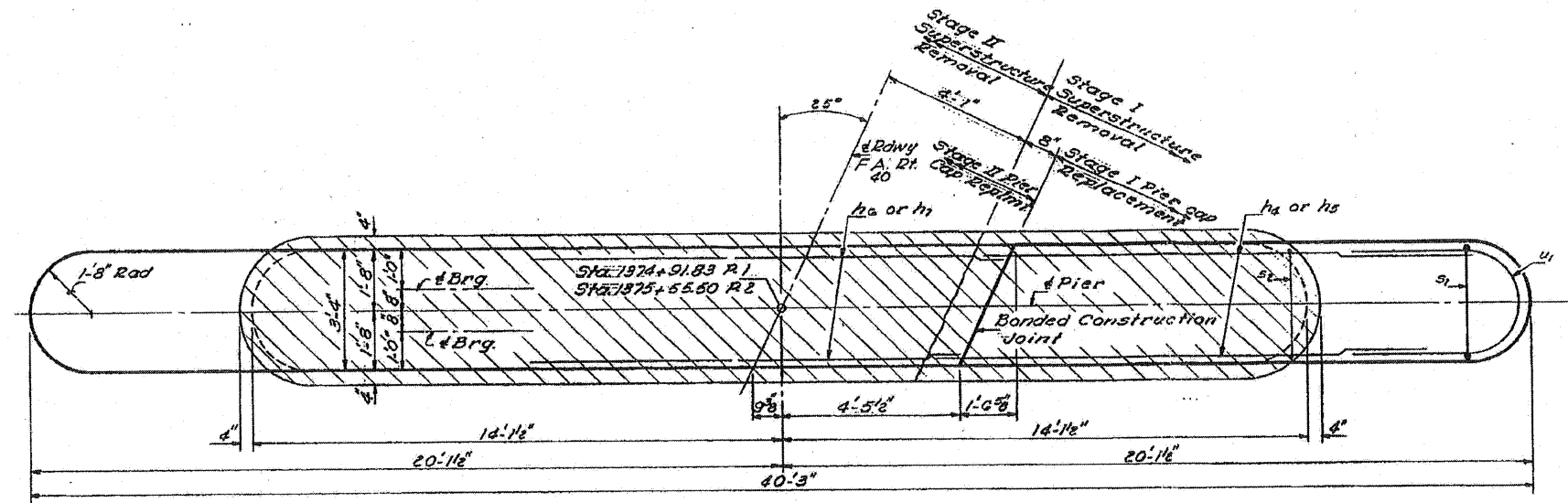


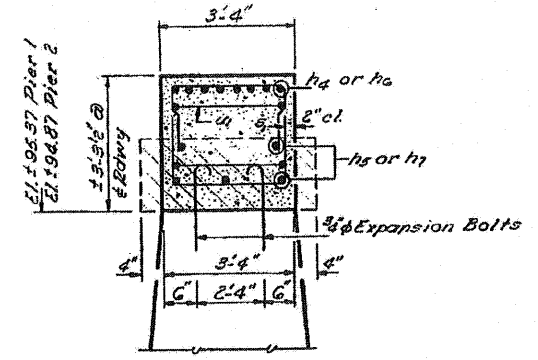
STATE OF ILLINOIS  
DIVISION OF HIGHWAYS

|                       |         |           |                  |           |
|-----------------------|---------|-----------|------------------|-----------|
| ROUTE NO.             | SECTION | COUNTY    | TOTAL SHEETS     | SHEET NO. |
| PA 40                 | BBR     | WHITESIDE | 11               | 11        |
| FED. ROAD DIST. NO. 2 |         | ILLINOIS  | FED. AID PROJECT |           |

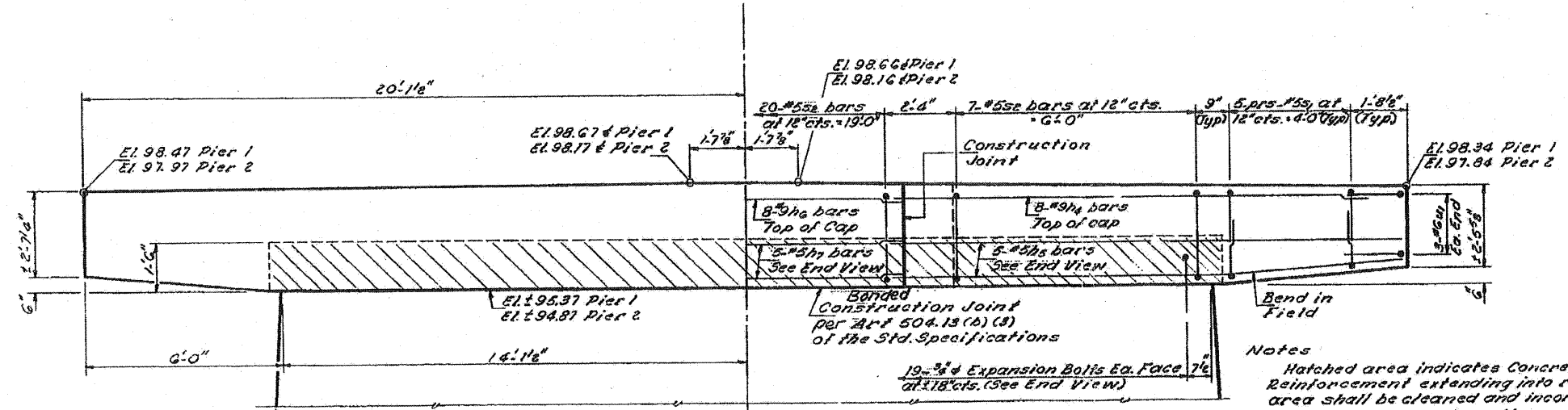
SHEET NO. 9  
9 SHEETS



PLAN



END VIEW

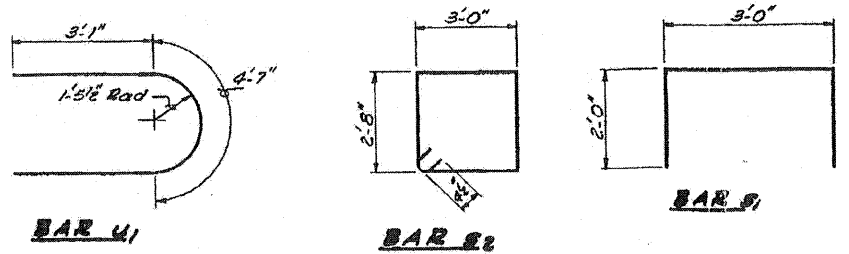


ELEVATION  
(Looking South)

Notes  
Hatched area indicates Concrete Removal. Reinforcement extending into removed area shall be cleaned and incorporated into the new construction.  
Expansion Bolts shall be anchored in sound concrete.  
All edges shall have standard 3/4" chamfers.

TWO PIERS  
BILL OF MATERIAL

| Bar                | No. | Size | Length  | Shape |
|--------------------|-----|------|---------|-------|
| h4                 | 16  | #9   | 15'-0"  | —     |
| h5                 | 10  | #5   | 15'-0"  | —     |
| h6                 | 16  | #9   | 23'-0"  | —     |
| h7                 | 10  | #5   | 23'-0"  | —     |
| s1                 | 40  | #5   | 7'-0"   | □     |
| s2                 | 54  | #5   | 12'-7"  | □     |
| u1                 | 12  | #6   | 10'-9"  | U     |
| Class X Concrete   |     |      | Cu. Yds | 30.3  |
| Reinforcement Bars |     |      | Lbs.    | 3500  |
| Expansion Bolts    |     |      | Each    | 76    |
| Concrete Removal   |     |      | Cu. Yds | 13    |



DESIGNED: *Charles P. H...*  
CHECKED: SHEN, T. AIF A  
DRAWN: J. Kessler  
CHECKED: CT  
APPROVED: \_\_\_\_\_  
APRIL 9 1971

PIERS 1 & 2  
FA RT. 40 SEC. 8 BR  
WHITESIDE COUNTY  
STATION INT. 23.67

FILE NAME = P:\CIBBEL\MEST Proj\mest\2889\12406\_M03\_IL140\Civil\Drawn\Shen\A\2884854-ahc-mac9.dgn

**WILLS BURKE KELSEY ASSOCIATES LTD.**  
116 West Main Street, Suite 201  
St. Charles, Illinois 60174  
(830) 443-7755

|                      |               |           |
|----------------------|---------------|-----------|
| USER NAME = #USER#   | DESIGNED -    | REVISED - |
| PLOT SCALE =         | DRAWN -       | REVISED - |
| PLOT DATE = 8/2/2010 | CHECKED -     | REVISED - |
|                      | DATE - 8/6/10 | REVISED - |

STATE OF ILLINOIS  
DEPARTMENT OF TRANSPORTATION

|  |              |
|--|--------------|
| EXISTING STRUCTURE PLANS<br>FOR REFERENCE ONLY |              |
| SCALE:   | STA. TO STA. |
| SHEET NO. 69 OF 90 SHEETS                      |              |

|                    |         |           |                           |           |
|--------------------|---------|-----------|---------------------------|-----------|
| F.A.P. RTE.        | SECTION | COUNTY    | TOTAL SHEETS              | SHEET NO. |
| 646                | BBR-1   | WHITESIDE | 90                        | 69        |
| CONTRACT NO. 84854 |         |           | ILLINOIS FED. AID PROJECT |           |

EXISTING STRUCTURE PLANS - FOR REFERENCE ONLY