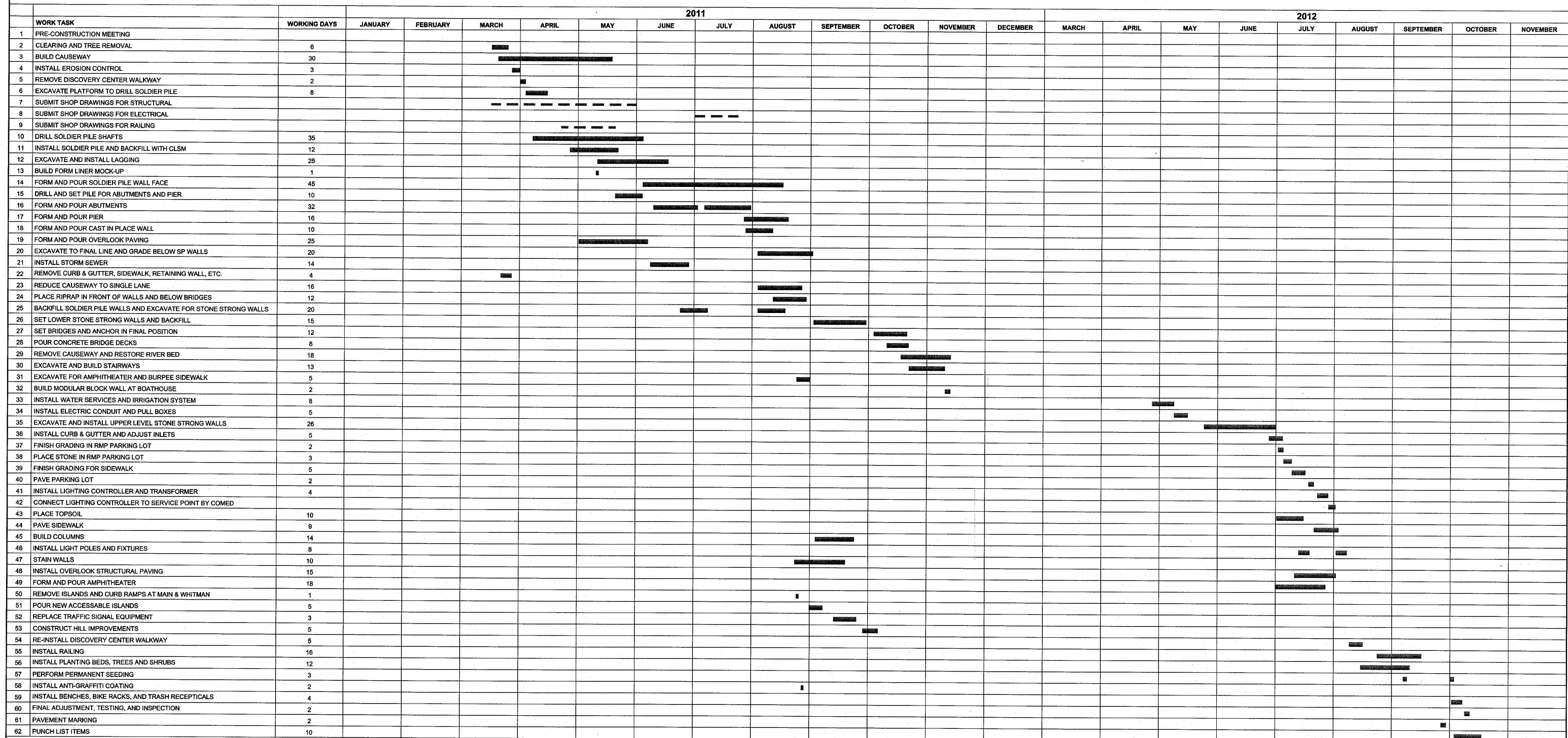


PROJECT SCHEDULE

F.A. RTE.	SECTION	COUNTY	TOTAL SHEETS	SHEET NO.
	06-00543-00-BT	WINNEBAGO	148	4
FED. ROAD DIST. NO.		ILLINOIS	CONTRACT NO.	85521

FOR INFORMATION ONLY



TOTAL 681 DAYS
 TIME FROM OVERLAPPING OPERATIONS 161 DAYS
 TOTAL WORKING DAYS 520 DAYS

H:\08-008 RIVERWALK MUSEUM\DESIGN\DRAWINGS\08-008 PROJECT SCHEDULE.DWG, PROJECT SCHEDULE, 9/2/2010 3:08:09 PM, JH

SHEET REVIEW AGENCY: _____ DATE: _____		REVISIONS NO. ITEM DATE		SCALE: Hor. 1"=40' DRAWN BY: BCS CHECKED BY: JWH DATE: AUGUST 13, 2010	7282 Argus Drive Rockford, Illinois 61107-5837 (815) 398-2332 FAX (815) 398-2498 Design Firm License: Illinois 184-000816 Copyright 2010 By McClure Engineering Associates, Inc.	PROJECT SCHEDULE RIVERWALK MUSEUM CAMPUS 711 NORTH MAIN STREET ROCKFORD, IL FILE: H:\08-008 RIVERWALK MUSEUM\DESIGN\DRAWINGS\08-008 PROJECT SCHEDULE.DWG JOB: 04-28-10-008	SHEET NO. 4 OF 148
---	--	----------------------------	--	---	---	---	-----------------------------