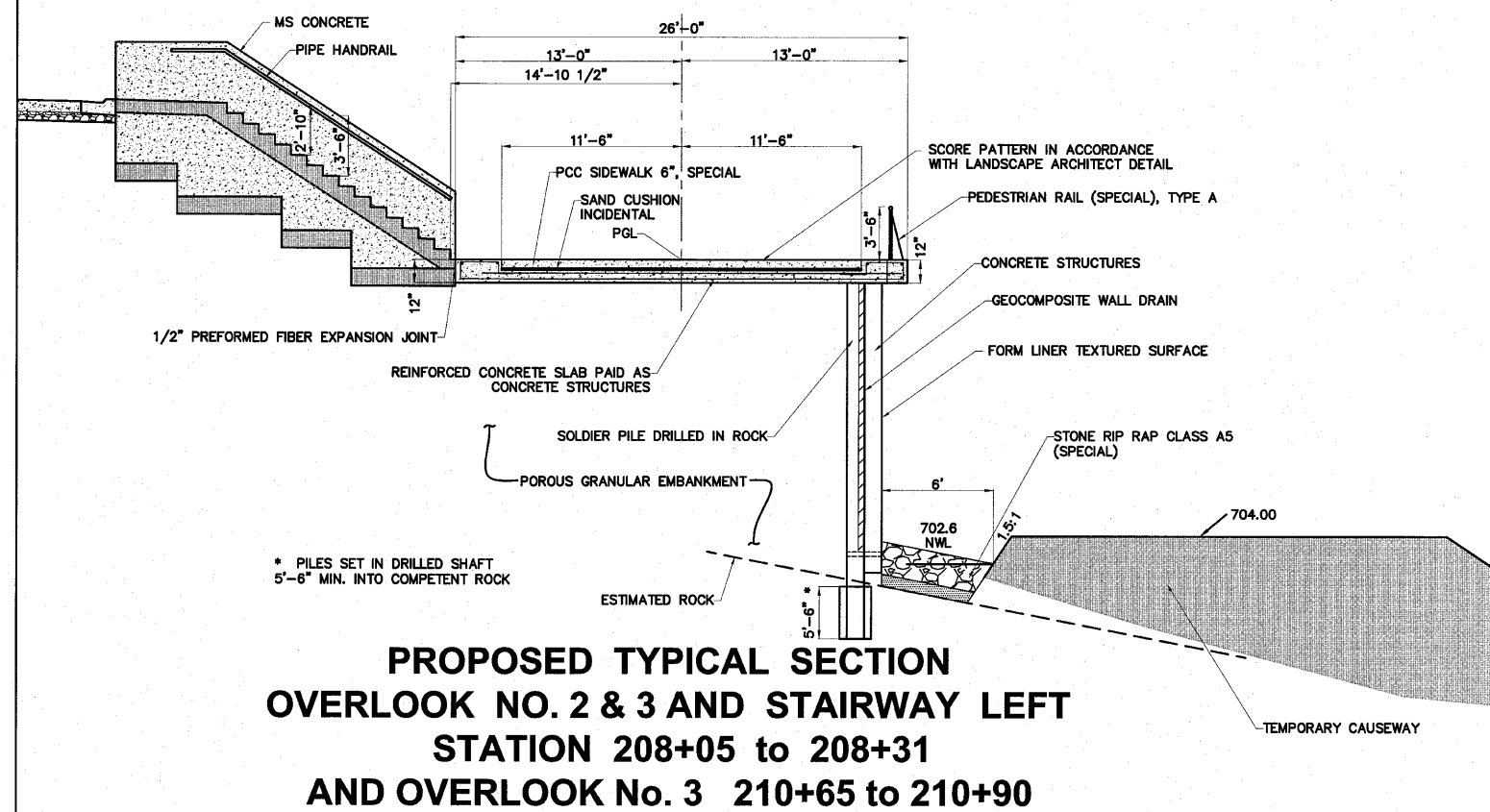
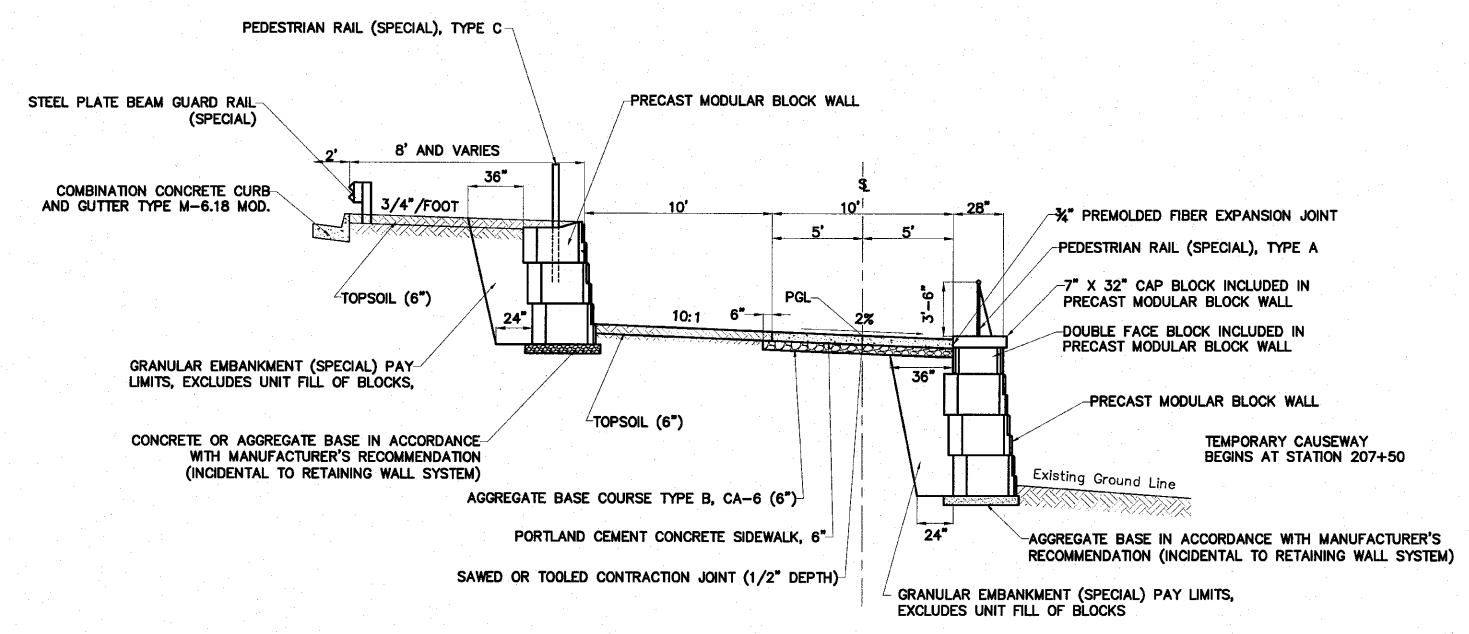


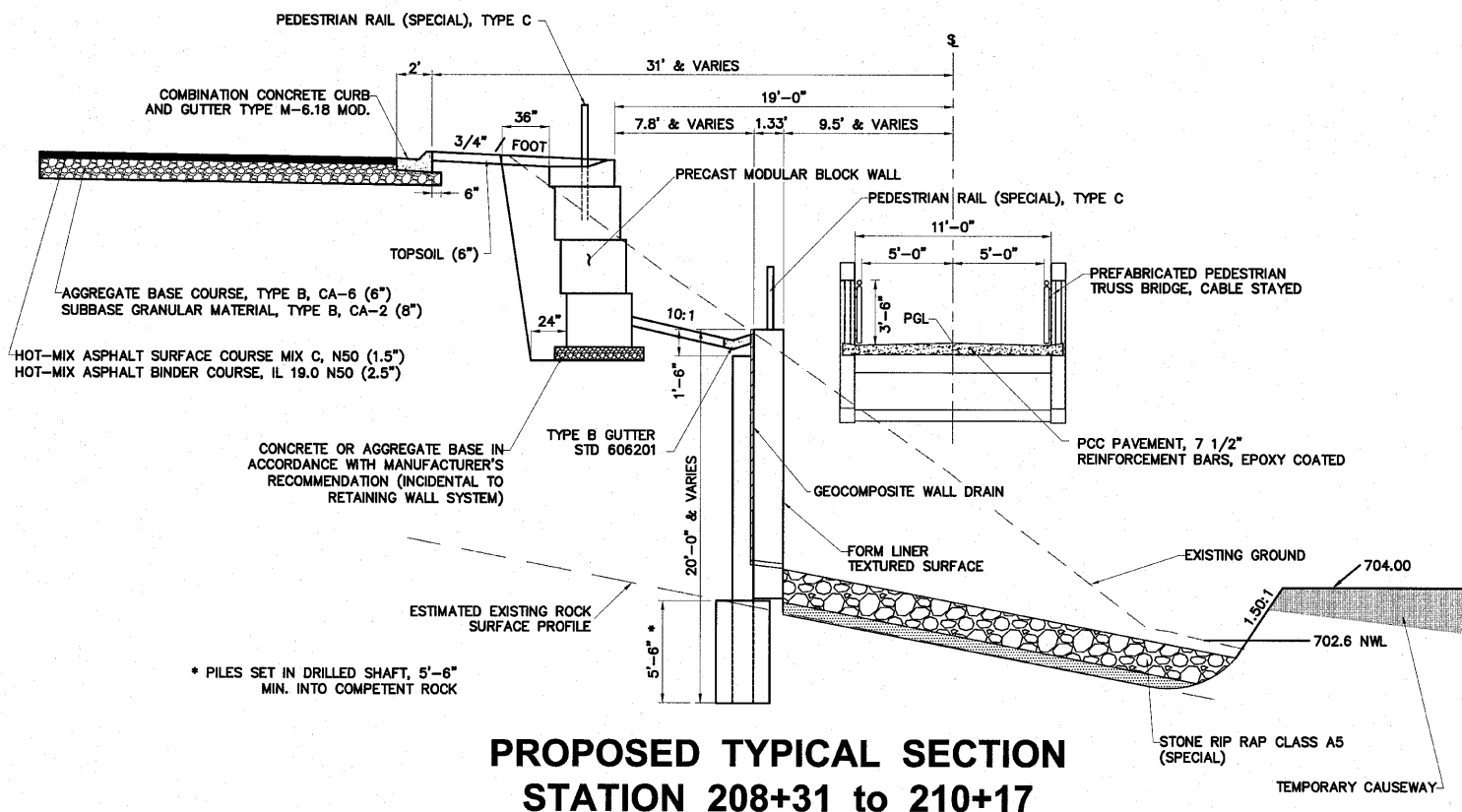
INTENTIONALLY
BLANK



**PROPOSED TYPICAL SECTION
OVERLOOK NO. 2 & 3 AND STAIRWAY LEFT
STATION 208+05 to 208+31
AND OVERLOOK No. 3 210+65 to 210+90**



**PROPOSED TYPICAL SECTION
STATION 206+90 to 208+05**



**PROPOSED TYPICAL SECTION
STATION 208+31 to 210+17**

H:\08-008 RIVERWALK MUSEUM\DESIGN\DRAWINGS\08-008 TYPICAL SECTIONS.DWG, TYPICAL SECTIONS.DWG, 9/11/2010 2:31:15 PM, L.H. MONY

SHEET REVIEW		REVISIONS		SCALE: N/A	<p>7282 Argus Drive Rockford, Illinois 61107-5837 (815) 398-2332 FAX (815) 398-2496 Design Firm License: Illinois 184-000816 Copyright 2010 By McClure Engineering Associates, Inc.</p>	TYPICAL SECTION		SHEET NO. 7 OF 148	
AGENCY	DATE	NO.	ITEM	DATE		RIVERWALK MUSEUM CAMPUS			ROCKFORD, IL
						711 NORTH MAIN STREET			JOB: 04-28-10-008
						FILE: H:\08-008 RIVERWALK MUSEUM\DESIGN\DRAWINGS\08-008 TYPICAL SECTIONS.DWG			