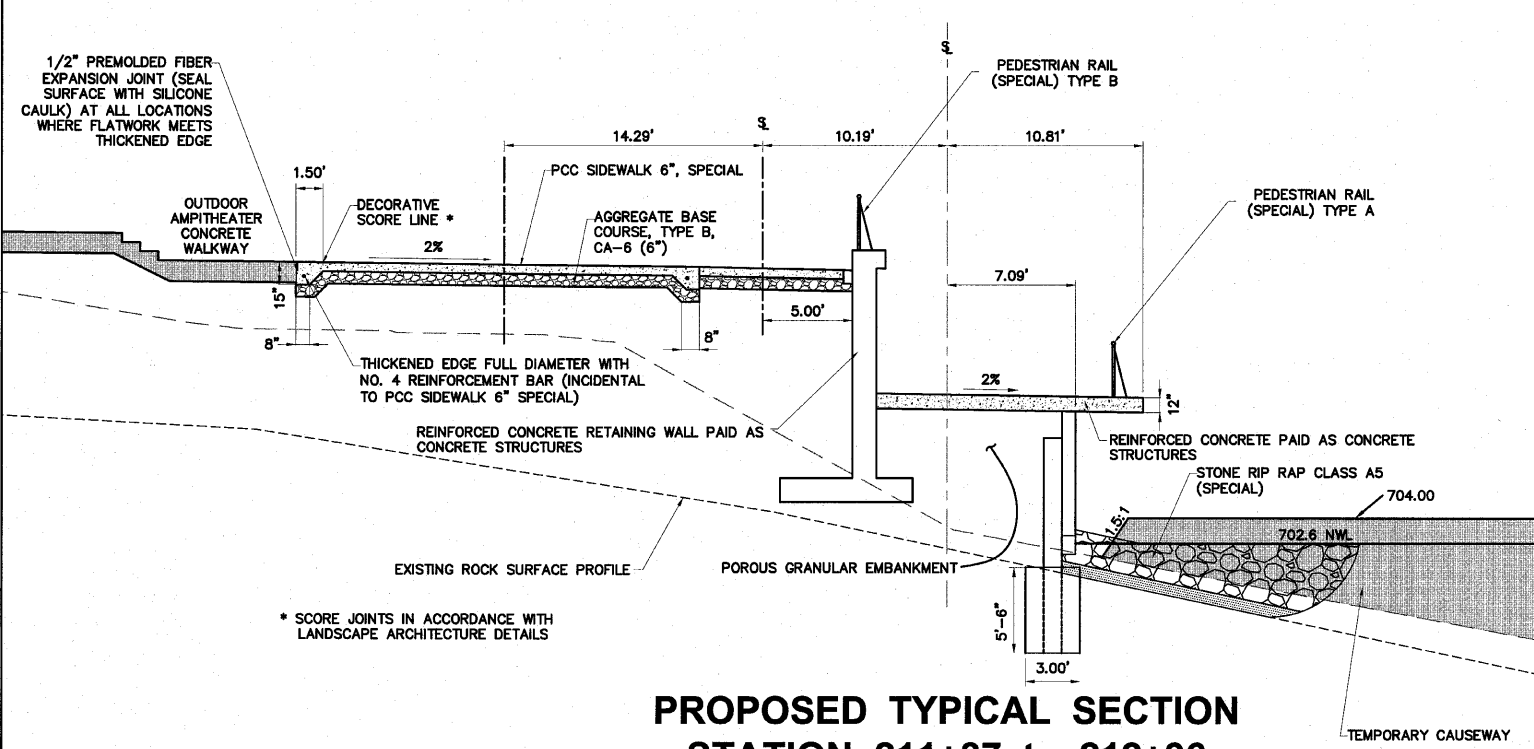
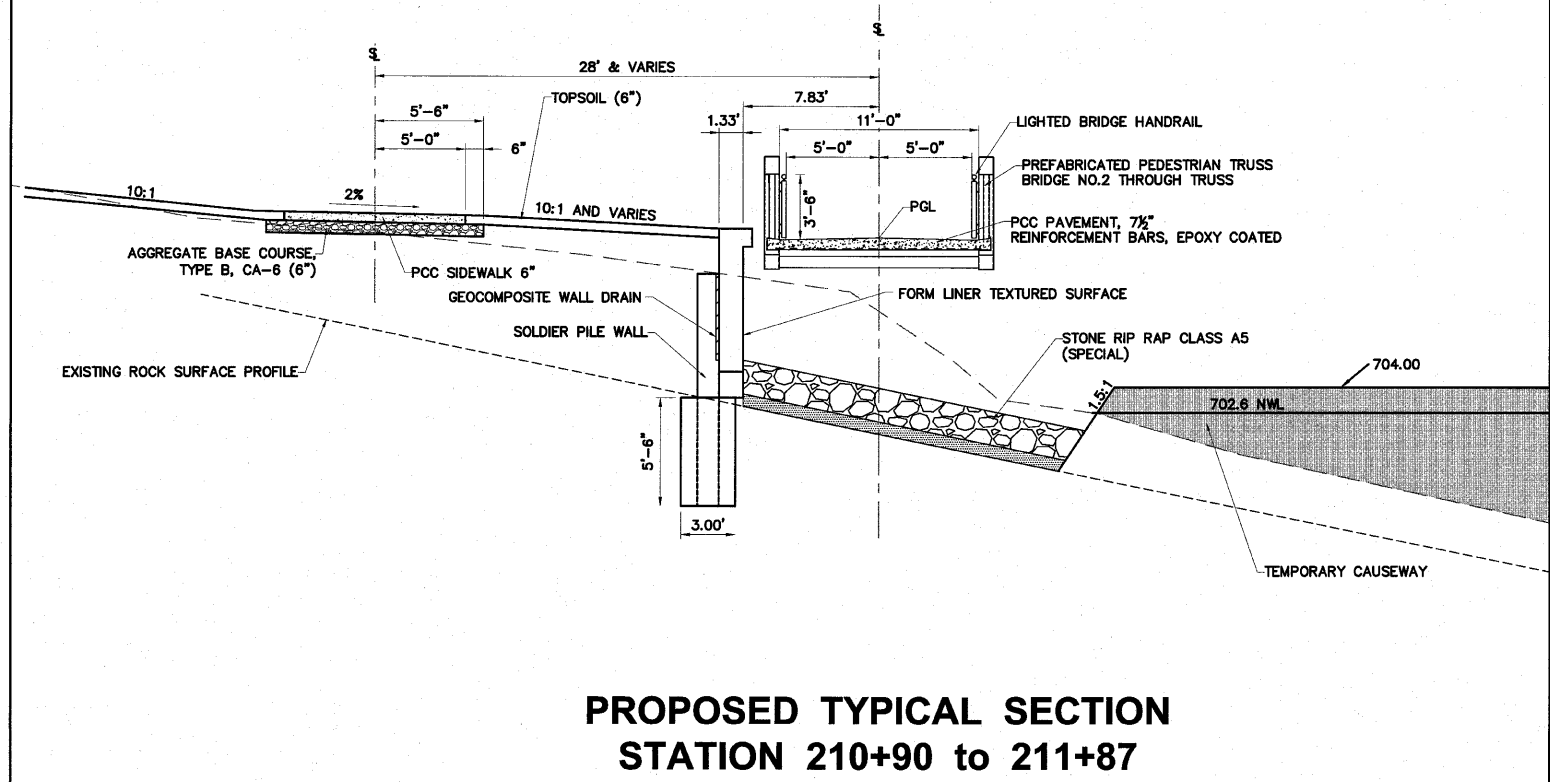


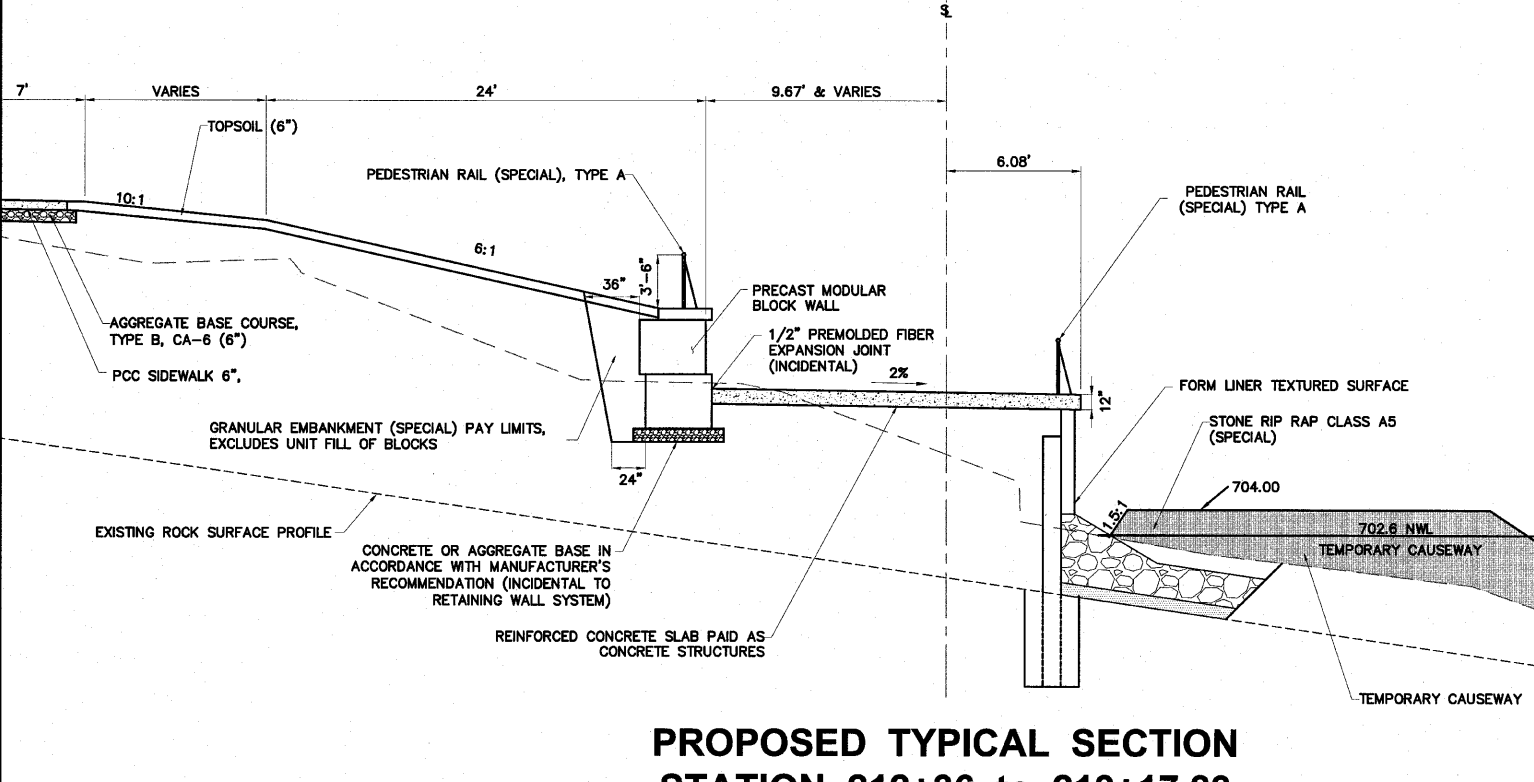
**PROPOSED TYPICAL SECTION
STATION 210+17 to 210+65**



**PROPOSED TYPICAL SECTION
STATION 211+87 to 212+36**



**PROPOSED TYPICAL SECTION
STATION 210+90 to 211+87**



**PROPOSED TYPICAL SECTION
STATION 212+36 to 213+17.83**

H:\08-008 RIVERWALK MUSEUM\DESIGN\DRAWINGS\08-008 TYPICAL SECTIONS.DWG, TYPSECT-MUSEUM 3, 9/1/2010 2:31:20 PM, E.I. MONY

SHEET REVIEW		REVISIONS		SCALE: N/A	<p>7285 Argus Drive Rockford, Illinois 61107-2937 (815) 398-2332 FAX (815) 398-2936 Design Firm License: Illinois 184-000816 Copyright 2010 By McClure Engineering Associates, Inc.</p>	TYPICAL SECTION		SHEET NO.	
AGENCY	DATE	NO.	ITEM	DATE		8	RIVERWALK MUSEUM CAMPUS		8
						OF	711 NORTH MAIN STREET		148
							ROCKFORD, IL		
							FILE:H:\08-008 RIVERWALK MUSEUM\DESIGN\DRAWINGS\08-008 TYPICAL SECTIONS.DWG		JOB: 04-28-10-008