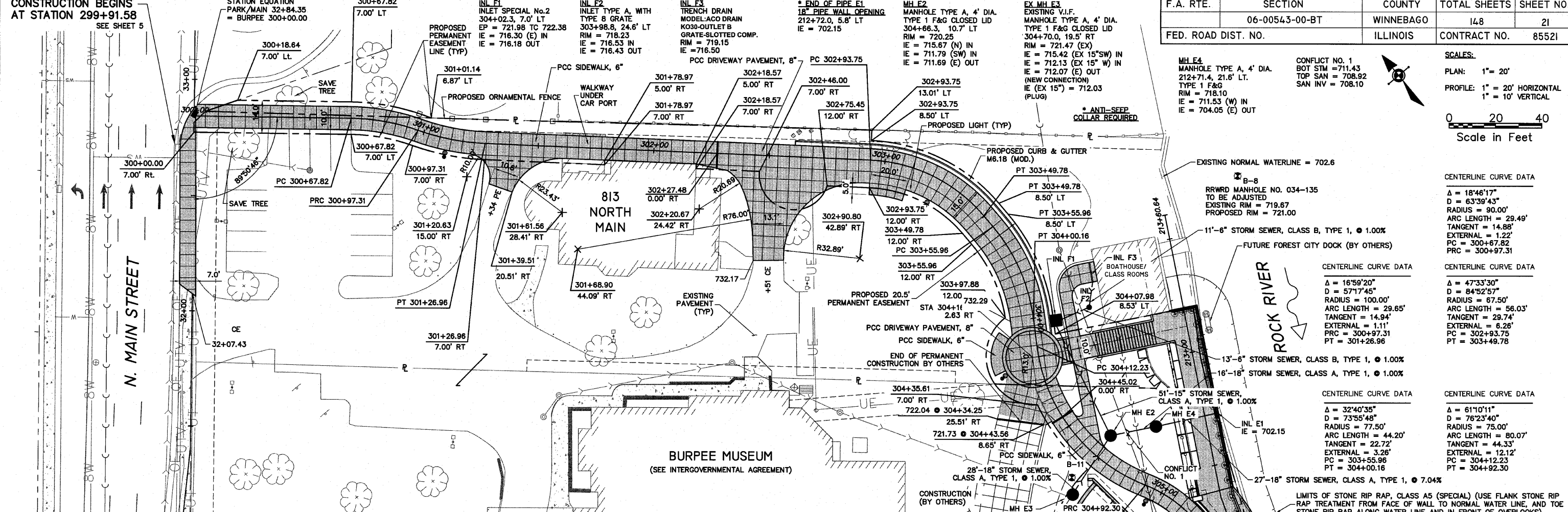


CONSTRUCTION BEGINS AT STATION 299+91.58 SEE SHEET 5

F.A. RTE.	06-00543-00-BT	WINNEBAGO	148	21
FED. ROAD DIST. NO.	ILLINOIS	CONTRACT NO.	85521	



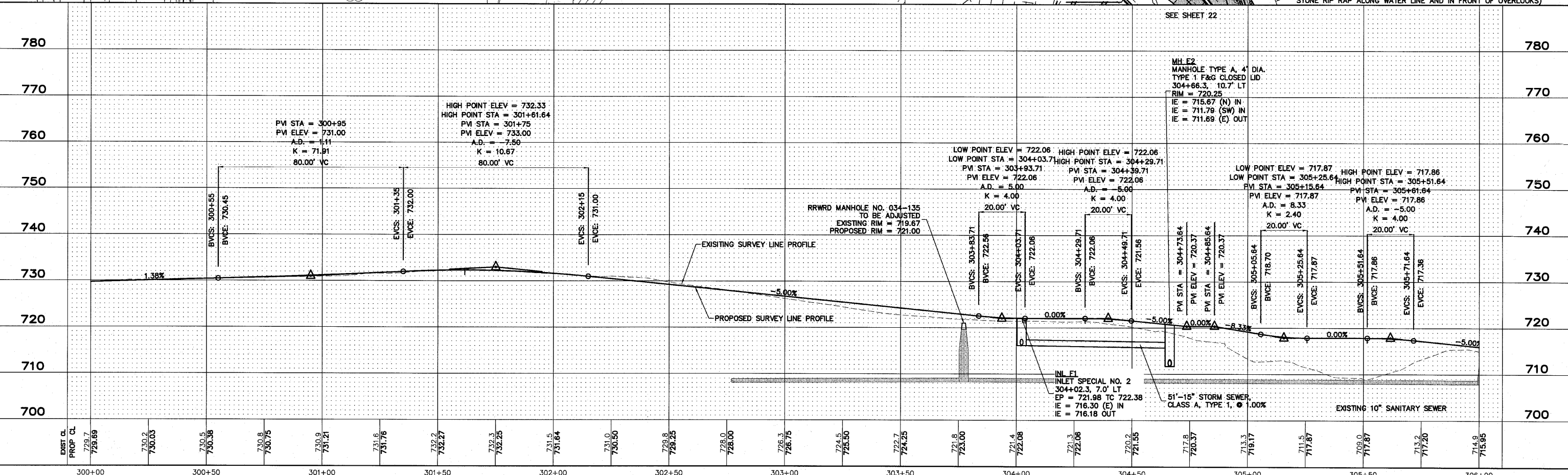
SCALES:
 PLAN: 1" = 20'
 PROFILE: 1" = 20' HORIZONTAL
 1" = 10' VERTICAL

0 20 40
 Scale in Feet

CENTERLINE CURVE DATA	
Δ = 18°46'17"	Δ = 47°33'30"
D = 84°52'57"	D = 84°52'57"
RADIUS = 90.00'	RADIUS = 67.50'
ARC LENGTH = 29.49'	ARC LENGTH = 56.03'
TANGENT = 14.88'	TANGENT = 29.74'
EXTERNAL = 1.22'	EXTERNAL = 8.26'
PC = 300+67.82	PC = 302+93.75
PT = 300+97.31	PT = 303+49.78

CENTERLINE CURVE DATA	
Δ = 16°59'20"	Δ = 32°40'35"
D = 57°17'45"	D = 73°55'48"
RADIUS = 100.00'	RADIUS = 77.50'
ARC LENGTH = 29.65'	ARC LENGTH = 44.20'
TANGENT = 14.94'	TANGENT = 22.72'
EXTERNAL = 1.11'	EXTERNAL = 3.26'
PC = 300+97.31	PC = 303+55.96
PT = 301+26.96	PT = 304+00.16

CENTERLINE CURVE DATA	
Δ = 61°10'11"	Δ = 61°10'11"
D = 76°23'40"	D = 76°23'40"
RADIUS = 75.00'	RADIUS = 75.00'
ARC LENGTH = 80.07'	ARC LENGTH = 80.07'
TANGENT = 44.33'	TANGENT = 44.33'
EXTERNAL = 12.12'	EXTERNAL = 12.12'
PC = 304+12.23	PC = 304+12.23
PT = 304+92.30	PT = 304+92.30



SHEET REVIEW		REVISIONS		SCALE: Hor. 1"=20' Ver. 1"=5'	<p>7285 Argus Drive Rockford, Illinois 61107-8837 (815) 398-2332 FAX (815) 398-2496 Design Firm License: Illinois 164-000816 Copyright 2010 By McClure Engineering Associates, Inc.</p>	PLAN & PROFILE - 300+00 TO 305+00		SHEET NO. 21 OF 148
AGENCY	DATE	NO.	ITEM	DATE		RIVERWALK MUSEUM CAMPUS		
						711 NORTH MAIN STREET ROCKFORD, IL		
						FILE: H:\08-008 RIVERWALK MUSEUM\DESIGN\DRAWINGS\08-008 PP 300+00 TO 305+00.DWG JOB: 08-28-10-008		

H:\08-008 RIVERWALK MUSEUM\DESIGN\DRAWINGS\08-008 PP 300+00 TO 305+00.DWG, 300+00 TO 305+00, 9/1/2010 2:34:45 PM, E.L. MONTY