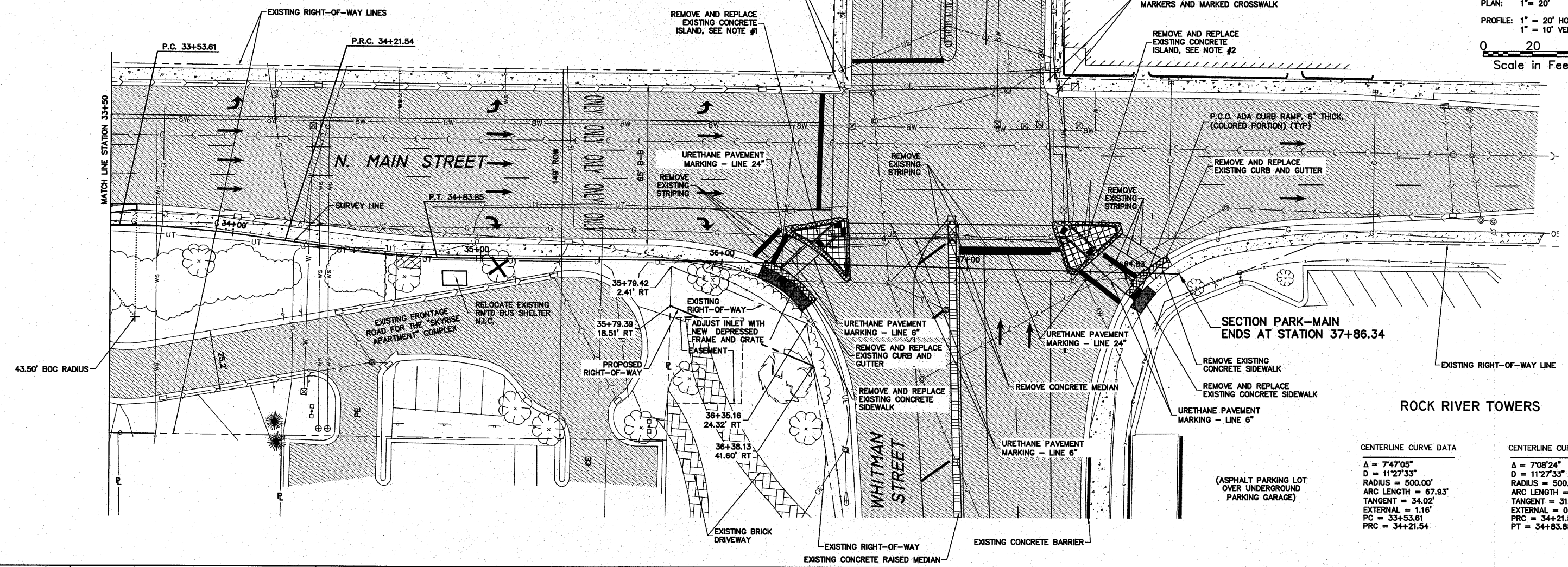


1. COMBINATION CONCRETE CURB AND GUTTER REMOVAL, 76 LF
 2. CONCRETE MEDIAN SURFACE REMOVAL, 245 SF
 3. ADJUST INLETS, 1 EACH
 4. MAST ARM AND FOUNDATION TO REMAIN IN PLACE
 5. COMBINATION CONCRETE CURB AND GUTTER, 76 LF TYPE-M6.18 (MOD)
 6. CONCRETE MEDIAN SURFACE 4", 245 SF
 7. DETECTABLE WARNINGS, 18 SF
 8. HANDHOLE TO BE ADJUSTED, 1 EACH
1. COMBINATION CONCRETE CURB AND GUTTER, 74 LF TYPE-M6.18 (MOD)
 2. CONCRETE MEDIAN SURFACE REMOVAL, 269 SF
 3. ADJUST INLETS, 2 EACH
 4. MAST ARM AND FOUNDATION TO REMAIN IN PLACE
 5. COMBINATION CONCRETE CURB AND GUTTER, 74 LF TYPE-M6.18 (MOD)
 6. CONCRETE MEDIAN SURFACE 4", 269 SF
 7. DETECTABLE WARNINGS, 12 SF
 8. HANDHOLE TO BE ADJUSTED, 1 EACH

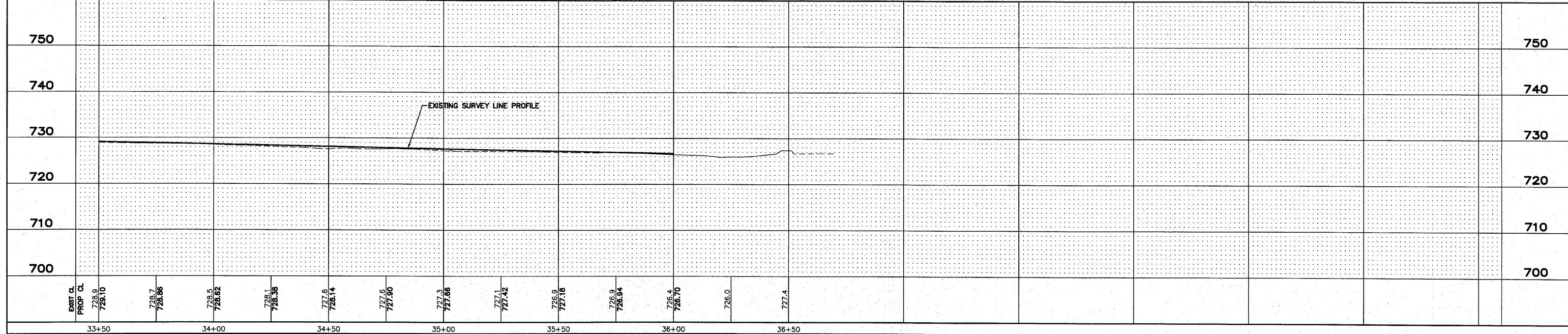
WINDSOR APARTMENT BUILDING

SCALES:
 PLAN: 1" = 20'
 PROFILE: 1" = 20' HORIZONTAL
 1" = 10' VERTICAL

Scale in Feet



CENTERLINE CURVE DATA	
$\Delta = 747^{\circ}05''$	$\Delta = 7^{\circ}08'24''$
$D = 11^{\circ}27'33''$	$D = 11^{\circ}27'33''$
RADIUS = 500.00'	RADIUS = 500.00'
ARC LENGTH = 67.93'	ARC LENGTH = 62.31'
TANGENT = 34.02'	TANGENT = 31.19'
EXTERNAL = 1.16'	EXTERNAL = 0.97'
PC = 33+53.61	PRC = 34+21.54
PRC = 34+21.54	PT = 34+83.85



SHEET REVIEW AGENCY: _____ DATE: _____		REVISIONS NO. ITEM DATE		SCALE: Hor. 1"=20' Ver. 1"=5' DRAWN BY: MS CHECKED BY: JWH DATE: AUGUST 13, 2010	7282 Argus Drive Rockford, Illinois 61107-5837 (815) 398-2332 FAX (815) 398-2496 Design Firm License: Illinois 184-000816 Copyright 2010 By McClure Engineering Associates, Inc.	PLAN & PROFILE - 33+50 TO END RIVERWALK MUSEUM CAMPUS 711 NORTH MAIN STREET ROCKFORD, IL FILE: H:\08-008 RIVERWALK MUSEUM\DRAWINGS\08-008 PP 33+50 TO END.DWG JOB: 04-28-10-008	SHEET NO. 23 OF 148
---	--	----------------------------	--	---	--	--	------------------------------

H:\08-008 RIVERWALK MUSEUM\DRAWINGS\08-008 PP 33+50 TO END.DWG, PLAN & PROFILE - 33+50 TO END, 9/14/2010 11:31:21 AM, JH, JWH