

**LEGEND**

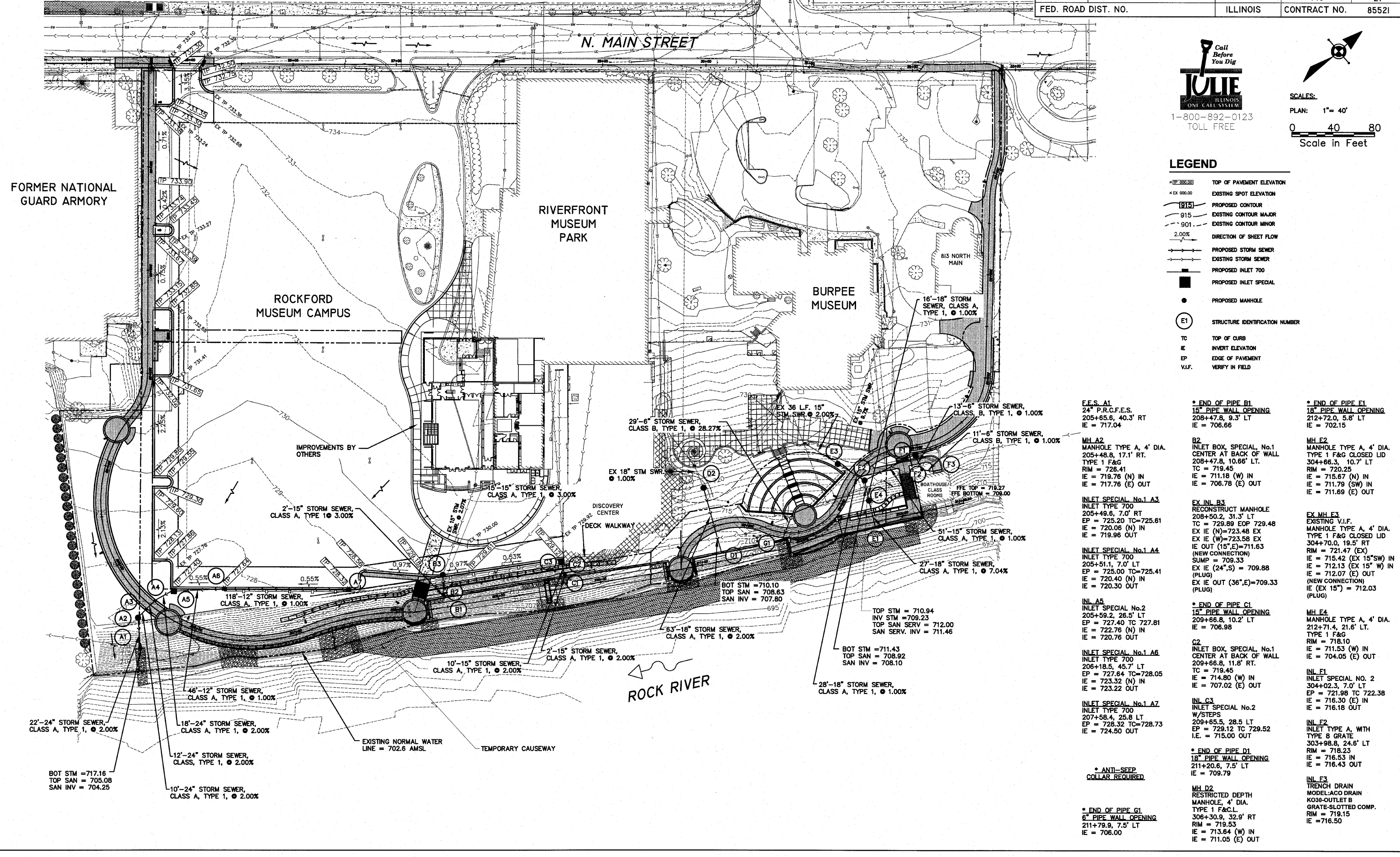
- TOP OF PAVEMENT ELEVATION
- EXISTING SPOT ELEVATION
- PROPOSED CONTOUR
- EXISTING CONTOUR MAJOR
- EXISTING CONTOUR MINOR
- DIRECTION OF SHEET FLOW
- PROPOSED STORM SEWER
- EXISTING STORM SEWER
- PROPOSED INLET 700
- PROPOSED INLET SPECIAL
- PROPOSED MANHOLE
- STRUCTURE IDENTIFICATION NUMBER
- TOP OF CURB
- INVERT ELEVATION
- EDGE OF PAVEMENT
- VERIFY IN FIELD

FORMER NATIONAL GUARD ARMORY

RIVERFRONT MUSEUM PARK

ROCKFORD MUSEUM CAMPUS

BURPEE MUSEUM



E.E.S. A1  
24" P.R.C.F.E.S.  
205+65.6, 40.3' RT  
IE = 717.04

\* END OF PIPE B1  
15" PIPE WALL OPENING  
208+47.8, 9.3' LT  
IE = 706.66

\* END OF PIPE E1  
18" PIPE WALL OPENING  
212+72.0, 5.8' LT  
IE = 702.15

MH A2  
MANHOLE TYPE A, 4' DIA.  
205+48.8, 17.1' RT.  
TYPE 1 F&G  
RIM = 728.41  
IE = 719.76 (N) IN  
IE = 717.76 (E) OUT

B2  
INLET BOX, SPECIAL, No.1  
CENTER AT BACK OF WALL  
208+47.8, 10.66' LT.  
TC = 719.45  
IE = 711.18 (W) IN  
IE = 706.78 (E) OUT

MH E2  
MANHOLE TYPE A, 4' DIA.  
TYPE 1 F&G CLOSED LID  
304+66.3, 10.7' LT  
RIM = 720.25  
IE = 715.67 (N) IN  
IE = 711.79 (SW) IN  
IE = 711.69 (E) OUT

29'-6" STORM SEWER,  
CLASS B, TYPE 1, @ 2.27%

EX 36 L.F. 15"  
STM SWR @ 2.00%

13'-6" STORM SEWER,  
CLASS B, TYPE 1, @ 1.00%

11'-6" STORM SEWER,  
CLASS B, TYPE 1, @ 1.00%

2'-15" STORM SEWER,  
CLASS A, TYPE 1 @ 3.00%

15'-15" STORM SEWER,  
CLASS A, TYPE 1, @ 3.00%

EX 18" STM SWR  
@ 1.00%

51'-15" STORM SEWER,  
CLASS A, TYPE 1, @ 1.00%

27'-18" STORM SEWER,  
CLASS A, TYPE 1, @ 7.04%

118'-12" STORM SEWER,  
CLASS A, TYPE 1, @ 1.00%

BOT STM = 710.10  
TOP SAN = 708.63  
SAN INV = 707.80

TOP STM = 710.94  
INV STM = 709.23  
TOP SAN SERV = 712.00  
SAN SERV. INV = 711.46

63'-18" STORM SEWER,  
CLASS A, TYPE 1, @ 2.00%

28'-18" STORM SEWER,  
CLASS A, TYPE 1, @ 1.00%

10'-15" STORM SEWER,  
CLASS A, TYPE 1, @ 2.00%

2'-15" STORM SEWER,  
CLASS A, TYPE 1, @ 2.00%

48'-12" STORM SEWER,  
CLASS A, TYPE 1, @ 1.00%

18'-24" STORM SEWER,  
CLASS A, TYPE 1, @ 2.00%

12'-24" STORM SEWER,  
CLASS, TYPE 1, @ 2.00%

10'-24" STORM SEWER,  
CLASS A, TYPE 1, @ 2.00%

BOT STM = 717.16  
TOP SAN = 705.08  
SAN INV = 704.25

\* ANTI-SEEP  
COLLAR REQUIRED

\* END OF PIPE G1  
6" PIPE WALL OPENING  
211+79.9, 7.5' LT  
IE = 706.00

MH D2  
RESTRICTED DEPTH  
MANHOLE, 4' DIA.  
TYPE 1 F&G  
306+30.9, 32.9' RT  
RIM = 719.53  
IE = 713.64 (W) IN  
IE = 711.05 (E) OUT

INL F3  
TRENCH DRAIN  
MODEL-ACO DRAIN  
K030-OUTLET B  
GRATE-SLOTTED COMP.  
RIM = 719.15  
IE = 716.50

SHEET REVIEW	
AGENCY	DATE

REVISIONS		
NO.	ITEM	DATE

SCALE:	Hor. 1"=20'
DRAWN BY:	BCS
CHECKED BY:	JMH
DATE:	AUGUST 13, 2010

**McClure**  
Engineering Associates, Inc.  
7282 Argus Drive  
Rockford, Illinois 61107-5637  
(815) 398-2232 FAX (815) 398-2496  
Design Firm License: Illinois 184-000816

**OVERALL DRAINAGE PLAN**  
RIVERWALK MUSEUM CAMPUS  
711 NORTH MAIN STREET  
ROCKFORD, IL  
FILE:H:\08-008 RIVERWALK MUSEUM\DESIGN\DRAWINGS\08-008 GRADING PLAN.DWG  
JOB:08-28-10-008

SHEET NO. **27**  
OF  
**148**

H:\08-008 RIVERWALK MUSEUM\DESIGN\DRAWINGS\08-008 GRADING PLAN.DWG, OVERALL GRADING PLAN, 9/2/2010 8:24:20 AM, I.I. MOITY