

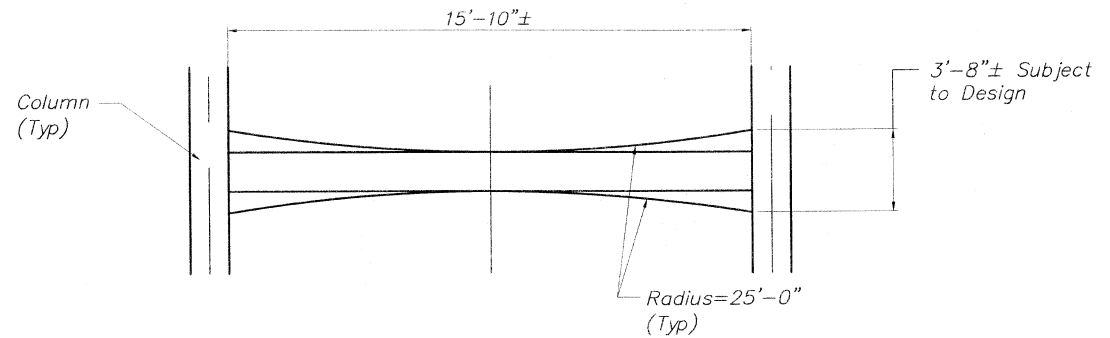
TOWER ELEVATION

TOWER ELEVATION-SIDE VIEW

Installation Tower to provide Temporary Support during span assembly, and Permanent Restraint for Transverse Loadings.

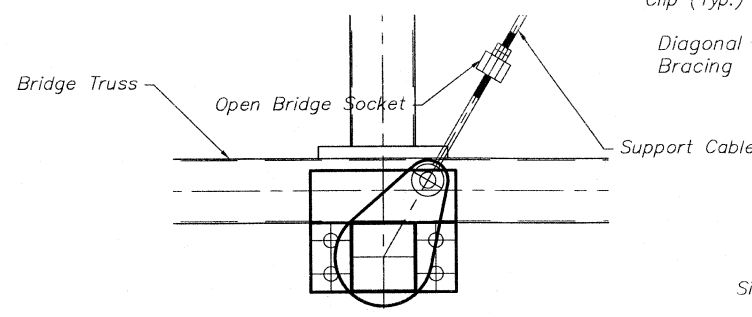
* Subject to Refinement in Manufacturer's Final Detailing

** Coordinate Elevations with Bridge Manufacturer

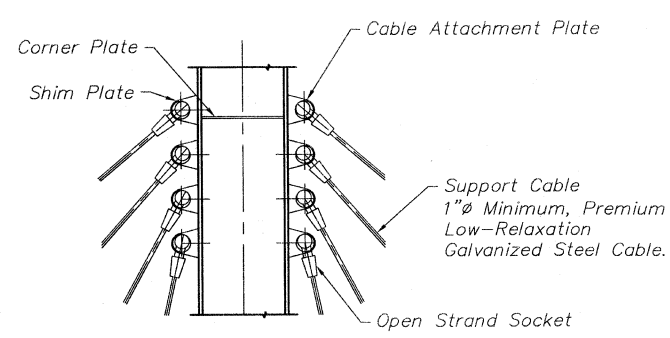


TOWER STRUT DETAIL

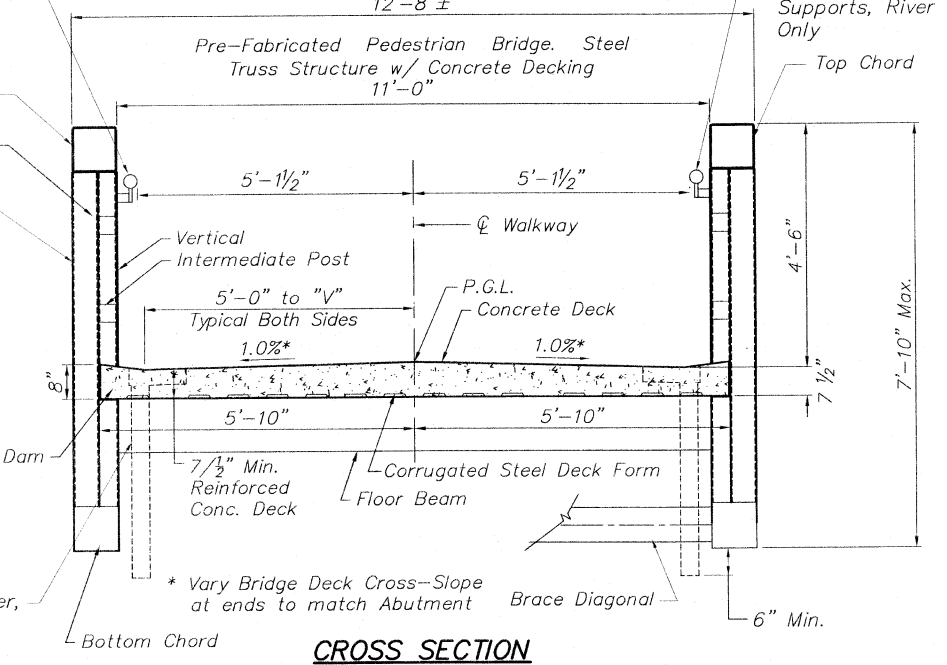
TOWER STRUT CONNECTION



BRIDGE TRUSS CABLE ATTACHMENT DETAIL



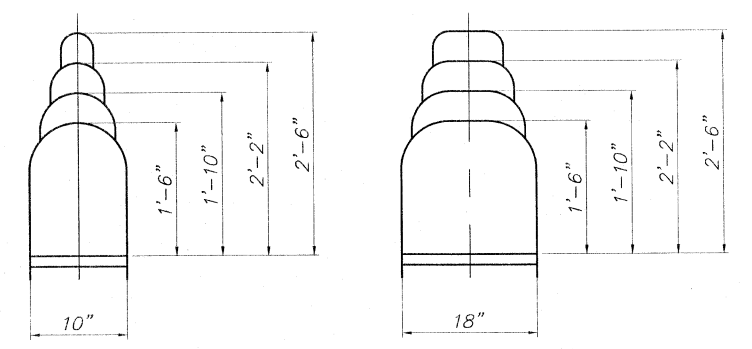
TOWER CABLE ATTACHMENT DETAIL



CROSS SECTION

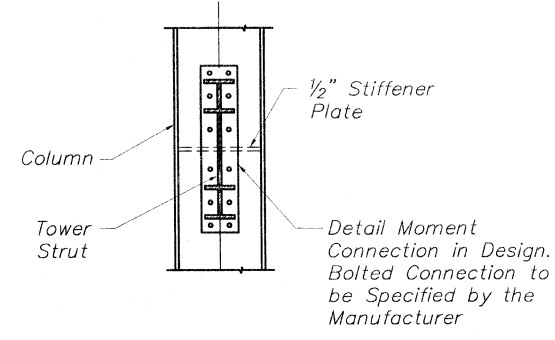
Drainage Scupper, 18" (Free Drop), One Each Side. Paid as Bridge Drainage System and includes two scuppers and drop pipe.

* Vary Bridge Deck Cross-Slope at ends to match Abutment



TOP ORNAMENT DETAILS

NOTE:
Contractor shall refer to the Special Provisions for design requirements, loading and stresses.



TOWER STRUT CONNECTION

**SUPERSTRUCTURE DETAILS
CABLE-STAYED PEDESTRIAN BRIDGE
PEDESTRIAN RIVERWALK
ALONG THE ROCK RIVER
WINNEBAGO COUNTY
SECTION NO. 06-00543-00-BT
STATION 209+48.25
STRUCTURE NO. 101-6350**

DESIGNED	CTB
CHECKED	AAG
DRAWN	JAW
CHECKED	JWH

McClure
Engineering Associates, Inc.
7282 Argus Drive
Rockford, Illinois 61107-5837
(815) 398-2332 Fax (815) 398-2496
Design Firm License: Illinois #184-000816
Copyright 2010 By McClure Engineering Associates, Inc.

SHEET NO. 3
II SHEETS

F.A. RTE.	SECTION	COUNTY	TOTAL SHEETS	SHEET NO.
	06-00543-00-BT	WINNEBAGO	148	58
FED. ROAD DIST. NO.		ILLINOIS	CONTRACT NO. 85521	
		FED. AID PROJECT		

H:\08-008 RIVERWALK MUSEUM\DESIGN\DRAWINGS\STRUCTURAL\GP&E\08-008 BRIDGES-6350 SUPER.DWG. STR6350 DETAILS (3). 9/14/2010 12:38:51 PM. H. JWH