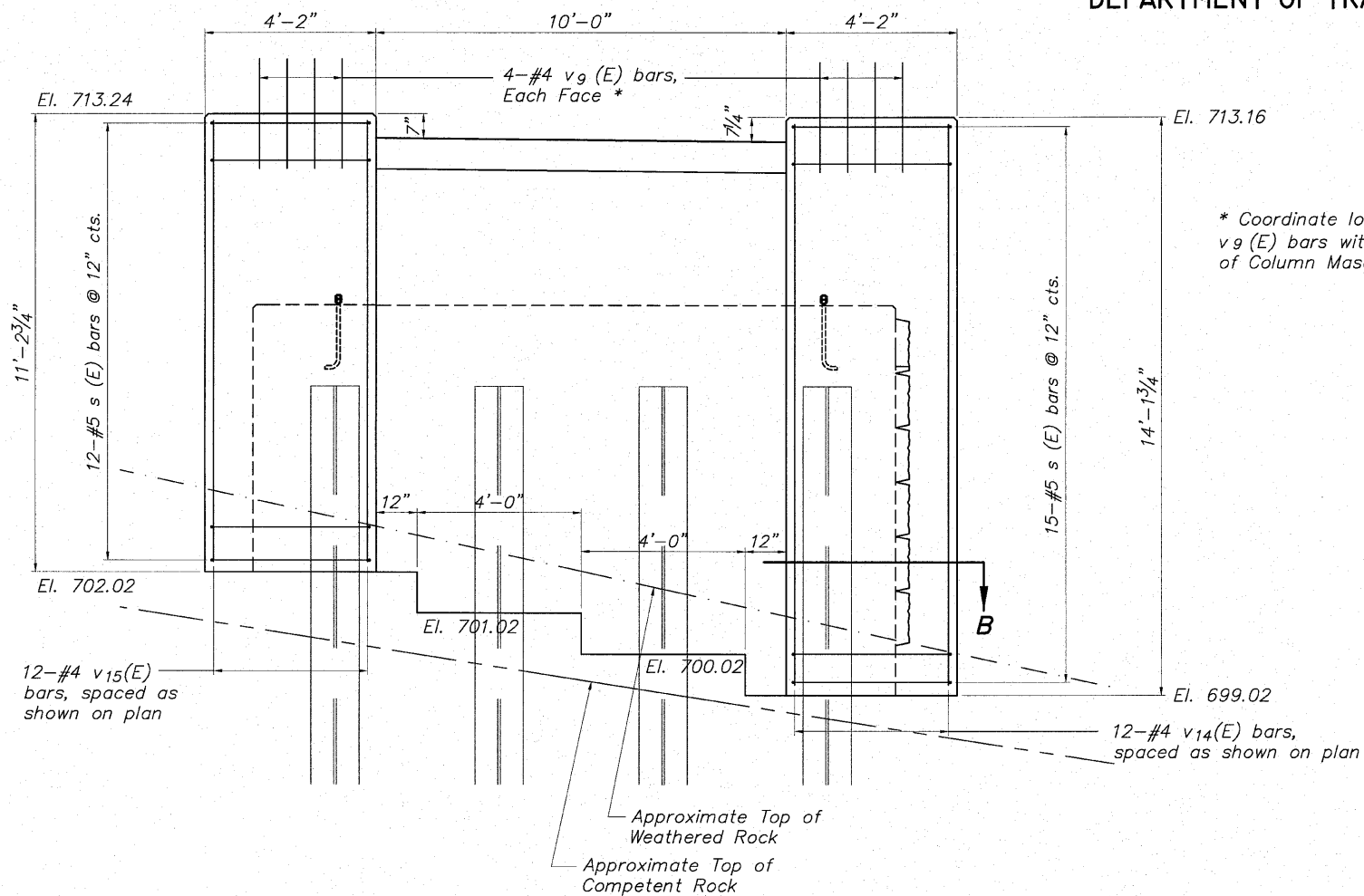
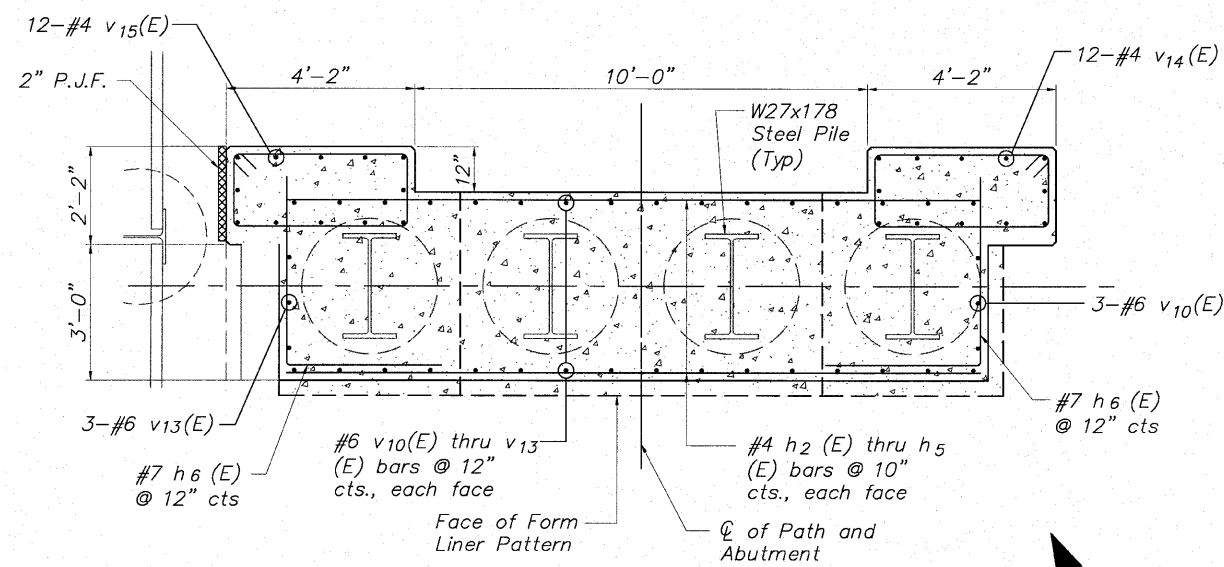


STATE OF ILLINOIS  
DEPARTMENT OF TRANSPORTATION

**BILL OF MATERIAL**  
North Abutment For Struct. No. 101-6350

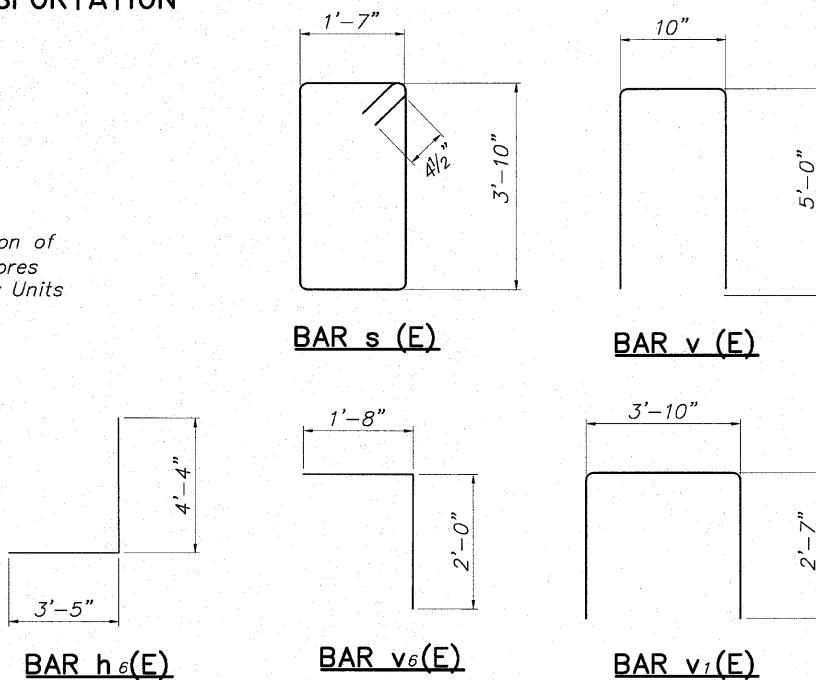


**ELEVATION (Showing Column Reinforcement)**  
Looking North



**SECTION B-B**

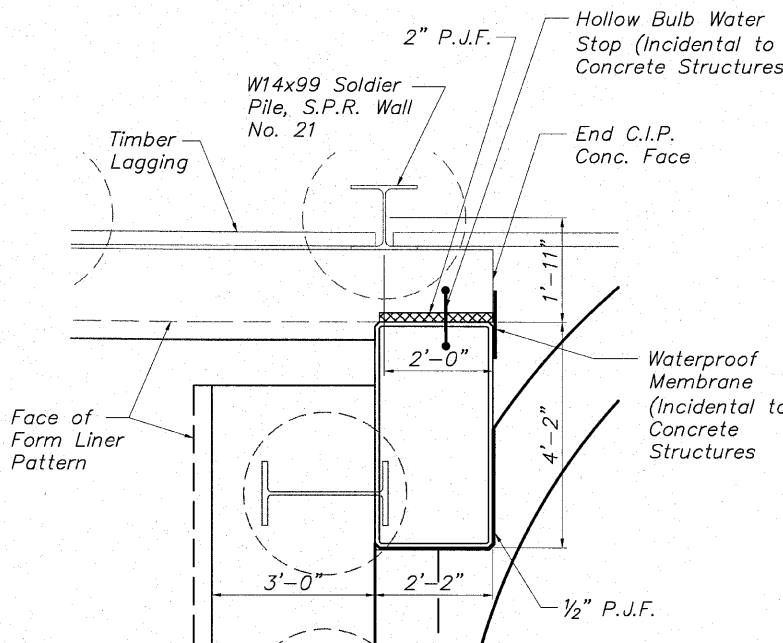
\* Coordinate location of v9 (E) bars with cores of Column Masonry Units



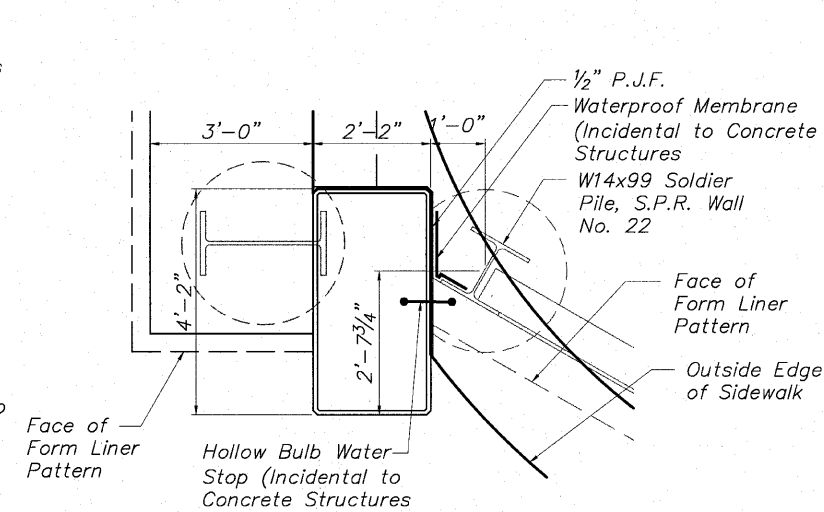
**MINIMUM BAR LAP**

- No. 4 bars 1'-8"
- No. 5 bars 2'-2"
- No. 6 bars 2'-7"
- No. 7 bars 3'-5"

Bar	No.	Size	Length	Shape
h (E)	8	#4	9'-8"	—
h1 (E)	16	#4	4'-0"	—
h2 (E)	18	#7	15'-4"	—
h3 (E)	2	#7	11'-4"	—
h4 (E)	4	#7	7'-4"	—
h5 (E)	2	#7	3'-4"	—
h6 (E)	20	#7	4'-4"	—
s (E)	27	#5	11'-7"	□
v (E)	10	#4	10'-10"	—
v1 (E)	16	#6	9'-0"	—
v6 (E)	10	#4	3'-8"	—
v9 (E)	16	#4	2'-8"	—
v10 (E)	11	#6	9'-1"	—
v11 (E)	8	#6	8'-1"	—
v12 (E)	8	#6	7'-1"	—
v13 (E)	11	#6	6'-1"	—
v14 (E)	12	#4	13'-8"	—
v15 (E)	12	#4	10'-9"	—
Concrete Structures			Cu. Yd.	33.4
Reinforcement Bars (Epoxy Coated)			Pound	2,255
Furnishing Steel Piles W Section W27x178			Foot	60
Setting Piles in Rock			Each	4
Geocomposite Wall Drain			Sq. Yd.	25.5
Form Liner Textured Surface			Sq. Ft.	136



**WEST SIDE NORTH ABUTMENT PLAN**



**EAST SIDE NORTH ABUTMENT PLAN**

**NORTH ABUTMENT DETAILS  
CABLE-STAYED PEDESTRIAN BRIDGE  
PEDESTRIAN RIVERWALK  
ALONG THE ROCK RIVER  
WINNEBAGO COUNTY  
SECTION NO. 06-00543-00-BT  
STATION 209+48.25  
STRUCTURE NO. 101-6350**

DESIGNED	CTB
CHECKED	AAG
DRAWN	JAW
PEER REVIEWED	

**McClure**  
Engineering Associates, Inc.  
7282 Argus Drive  
Rockford, Illinois 61107-5837  
(815) 398-2332 Fax (815) 398-2496  
Design Firm License: Illinois #154-000816  
Copyright 2010 By McClure Engineering Associates, Inc.

SHEET NO. 8  
II SHEETS

F.A. RTE.	SECTION	COUNTY	TOTAL SHEETS	SHEET NO.
	06-00543-00-BT	WINNEBAGO	148	63
CONTRACT NO.			85521	
FED. ROAD DIST. NO.	ILLINOIS	FED. AID PROJECT		