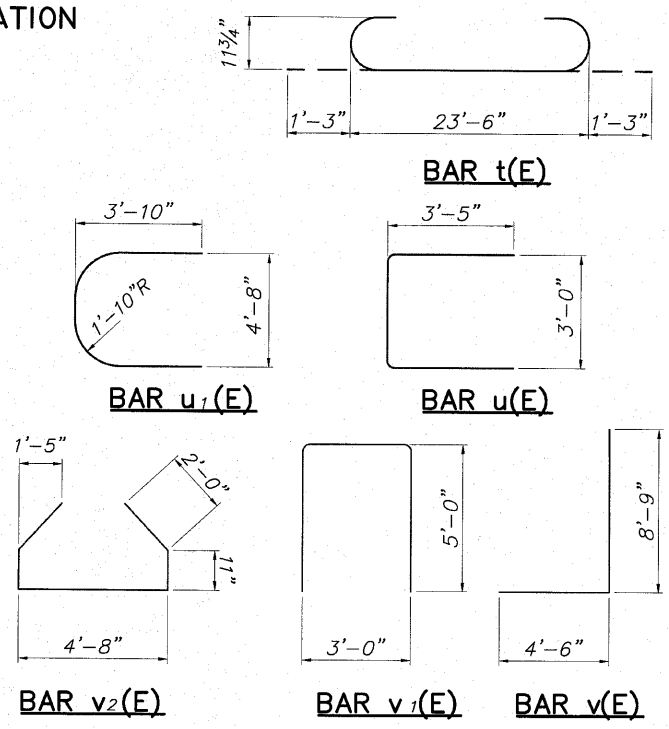
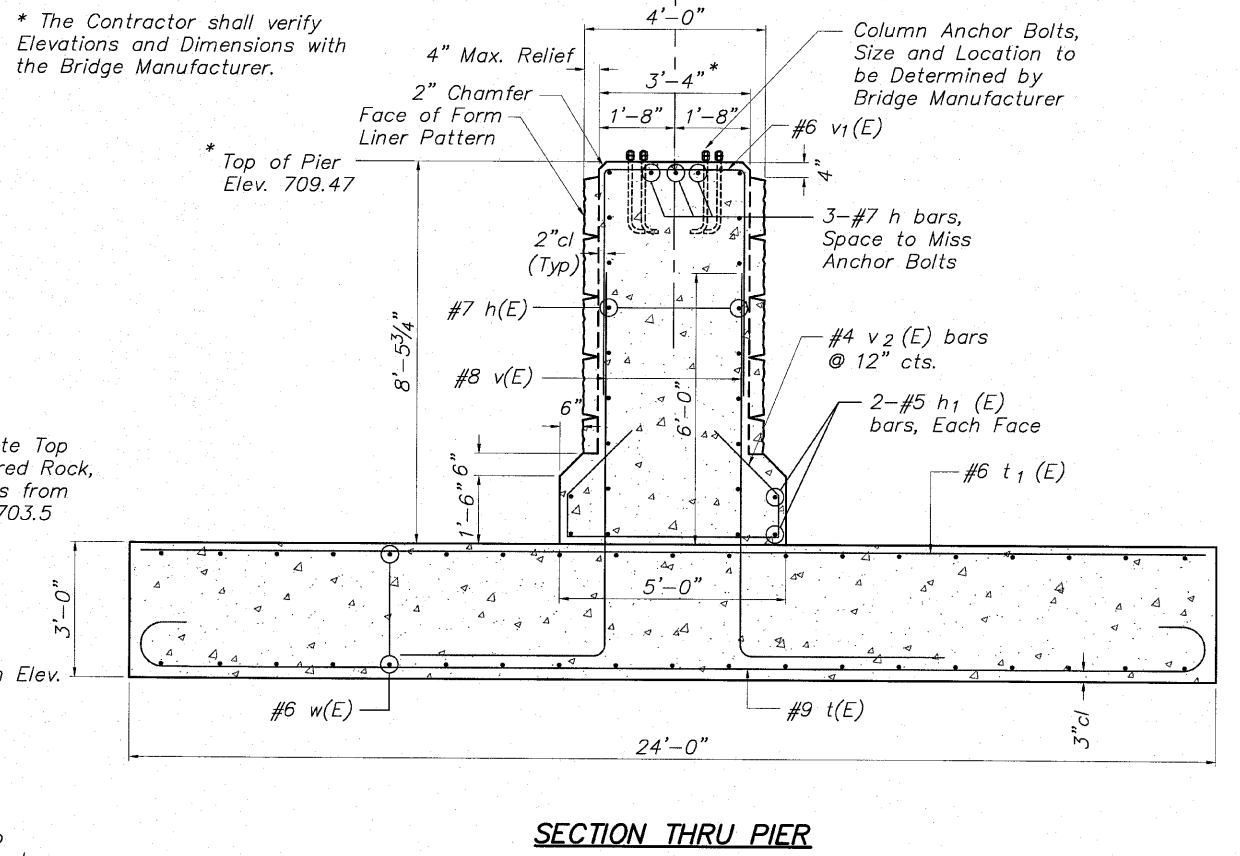
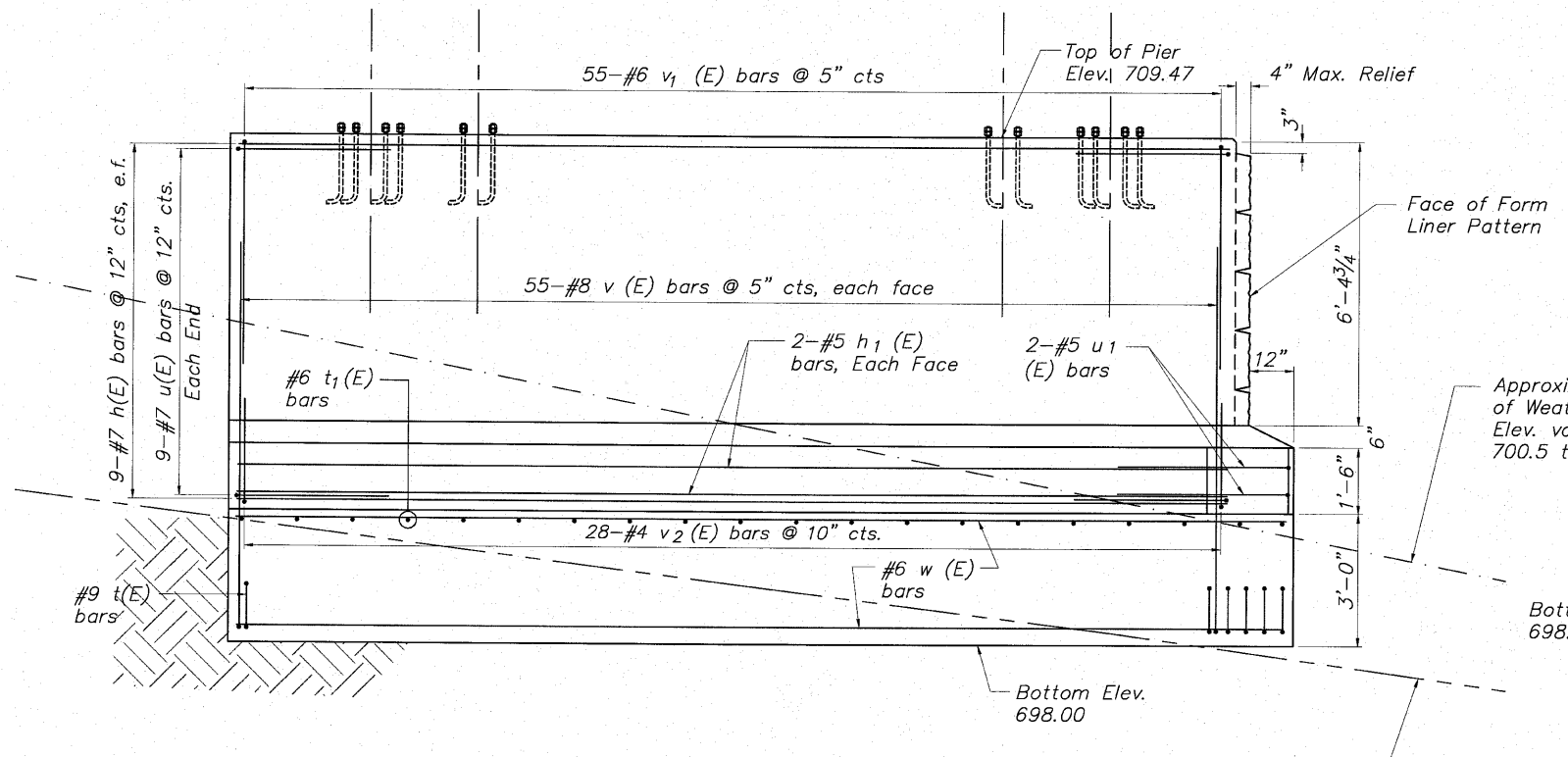


**MINIMUM BAR LAP**

No. 4 bars	1'-8"
No. 5 bars	2'-2"
No. 6 bars	2'-7"
No. 7 bars	3'-5"
No. 8 bars	4'-6"
No. 9 bars	5'-9"



Bar	No.	Size	Length	Shape
h (E)	21	#7	22'-4"	—
h <sub>1</sub> (E)	4	#5	22'-4"	—
t (E)	59	#9	26'-0"	⌋
t <sub>1</sub> (E)	20	#6	23'-6"	—
u (E)	18	#7	9'-10"	⌋
u <sub>1</sub> (E)	2	#5	10'-9"	⌋
v (E)	110	#8	13'-3"	⌋
v <sub>1</sub> (E)	55	#6	13'-0"	⌋
v <sub>2</sub> (E)	28	#4	10'-6"	⌋
w (E)	40	#6	23'-6"	—
Structure Excavation			Cu. Yd.	60
Rock Excavation for Structures			Cu. Yd.	85
Concrete Structures			Cu. Yd.	94.7
Reinforcement Bars (Epoxy Coated)			Pound	13,891
Form Liner Textured Surface			Sq. Ft.	303



Note:  
The Contractor shall notify the Engineer if Bottom of Footing Excavation is required below Elev. 698.00

\* The Contractor shall verify Elevations and Dimensions with the Bridge Manufacturer.

**PIER DETAILS**  
**CABLE-STAYED PEDESTRIAN BRIDGE**  
**PEDESTRIAN RIVERWALK**  
**ALONG THE ROCK RIVER**  
**WINNEBAGO COUNTY**  
**STATION 209+48.25**  
**STRUCTURE NO. 101-6350**

DESIGNED	CTB
CHECKED	AAG
DRAWN	JAW
PEER REVIEWED	

**McClure**  
Engineering Associates, Inc.  
7282 Argus Drive  
Rockford, Illinois 61107-5837  
(815) 398-2332 Fax (815) 398-2496  
Design Firm License: Illinois #184-000816  
Copyright 2010 By McClure Engineering Associates, Inc.

SHEET NO. 10  
II SHEETS

F.A. RTE.	SECTION	COUNTY	TOTAL SHEETS	SHEET NO.
	06-00543-00-BT	WINNEBAGO	148	64
FED. ROAD DIST. NO.		ILLINOIS	FED. AID PROJECT	
			CONTRACT NO. 85521	

H:\08-008 Riverwalk Museum\DESIGN\DRAWINGS\STRUCTURAL\GP&E\08-008 Bridges-6350 sub.dwg, Str 6350 Pier (9) - 9/8/2010 11:18:25 AM, MEA, Crc D, 2x6 in (Landscape), 1:1