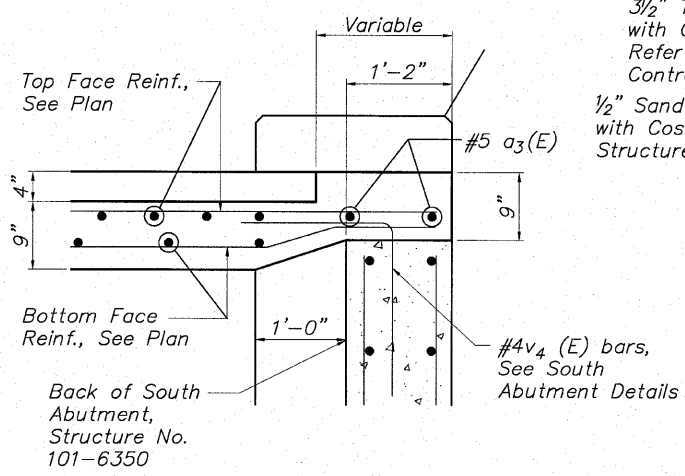
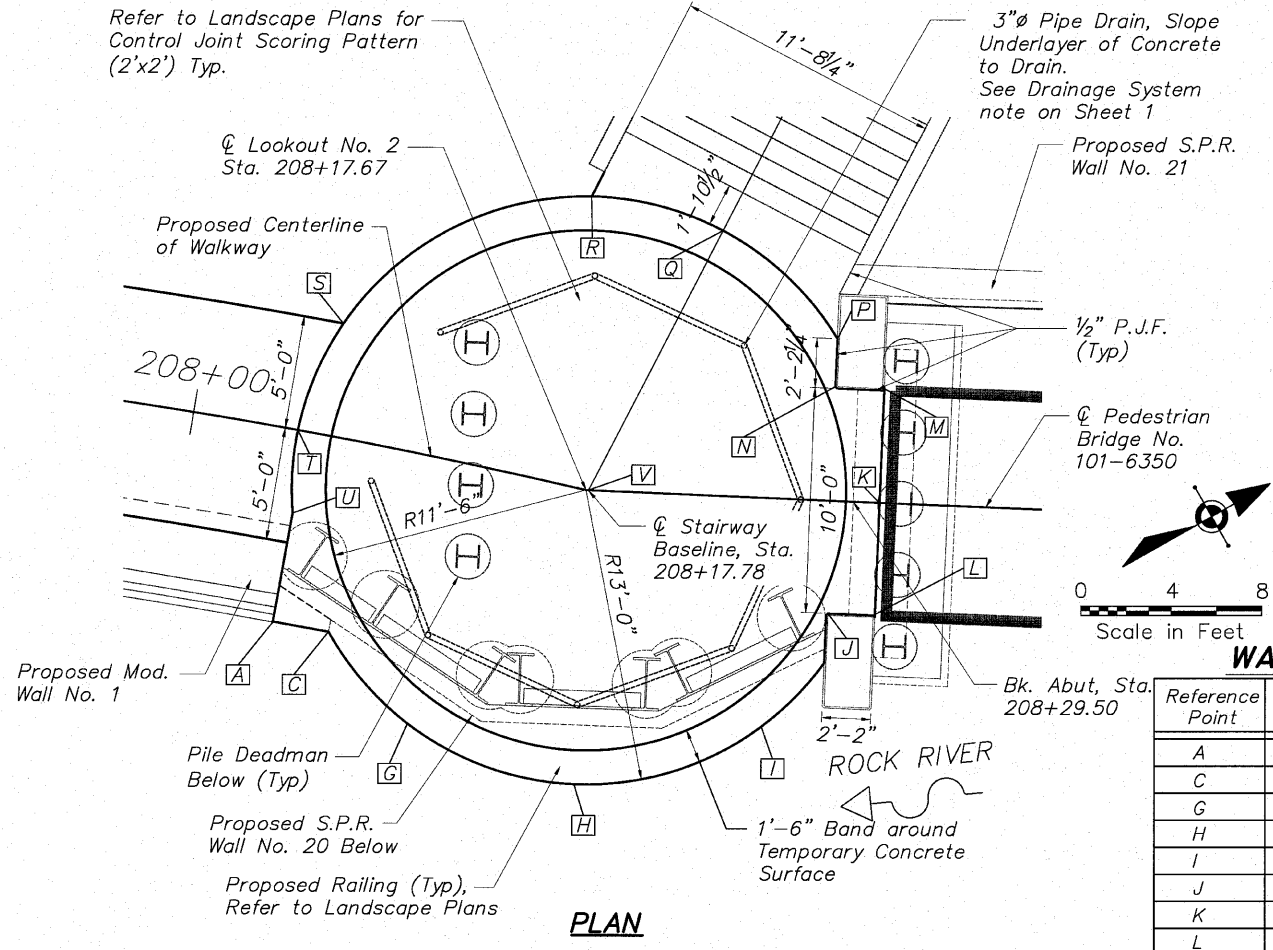
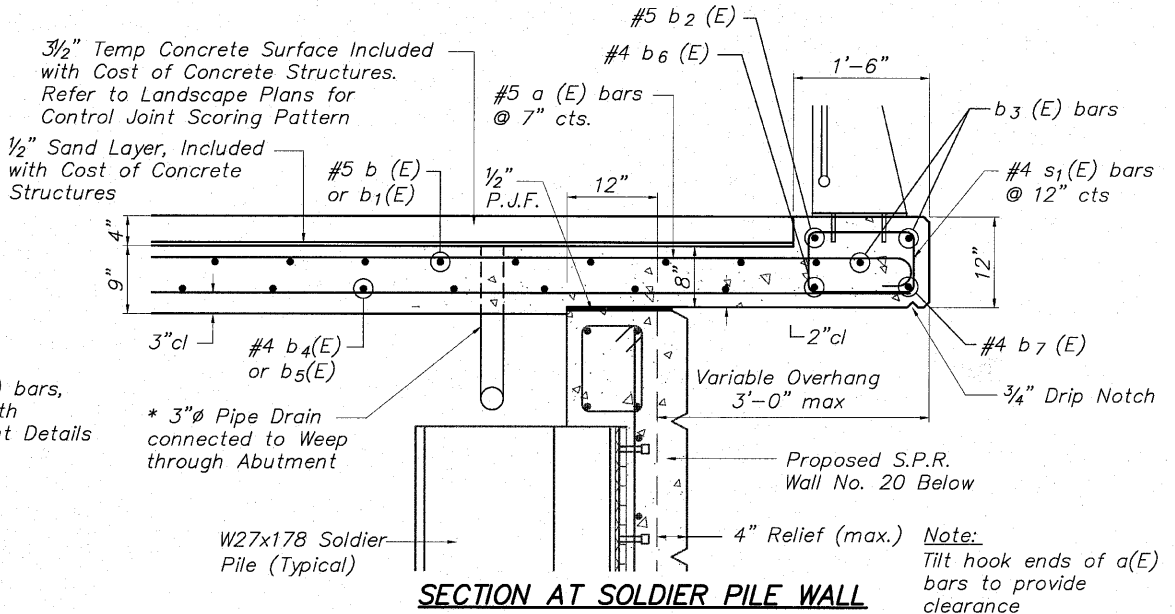


STATE OF ILLINOIS  
DEPARTMENT OF TRANSPORTATION



| Reference Point | Station to Top of Slab Elevation Pt. | Offset to Top of Slab Elevation Pt. | Elevation | Reference Point | Station to Top of Slab Elevation Pt. | Offset to Top of Slab Elevation Pt. | Elevation |
|-----------------|--------------------------------------|-------------------------------------|-----------|-----------------|--------------------------------------|-------------------------------------|-----------|
| A               | 208+05.12                            | 8.56' Rt.                           | 719.90    | N               | 208+28.58                            | 5.00' Lt.                           | 719.87    |
| C               | 208+07.71                            | 8.54' Rt.                           | 719.90    | P               | 208+28.58                            | 7.19' Lt.                           | 719.92    |
| G               | 208+13.21                            | 12.25' Rt.                          | 719.86    | Q               | 208+23.14                            | 11.74' Lt.                          | 720.13    |
| H               | 208+17.67                            | 13.00' Rt.                          | 719.81    | R               | 208+15.08                            | 12.73' Lt.                          | 720.13    |
| I               | 208+23.71                            | 11.52' Rt.                          | 719.71    | S               | 208+05.79                            | 5.00' Lt.                           | 720.10    |
| J               | 208+28.58                            | 5.00' Rt.                           | 719.76    | T               | 208+04.67                            | 0.00' Lt.                           | 720.01    |
| K               | 208+30.67                            | 0.00' Rt.                           | 719.84    | U               | 208+05.11                            | 3.67' Rt.                           | 719.93    |
| L               | 208+30.59                            | 5.00' Rt.                           | 719.79    | V               | 208+17.67                            | 0.00' Rt.                           | 719.94    |
| M               | 208+30.59                            | 5.00' Lt.                           | 719.89    |                 |                                      |                                     |           |

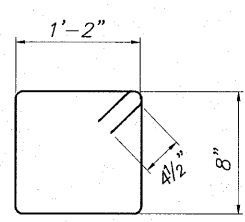
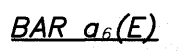
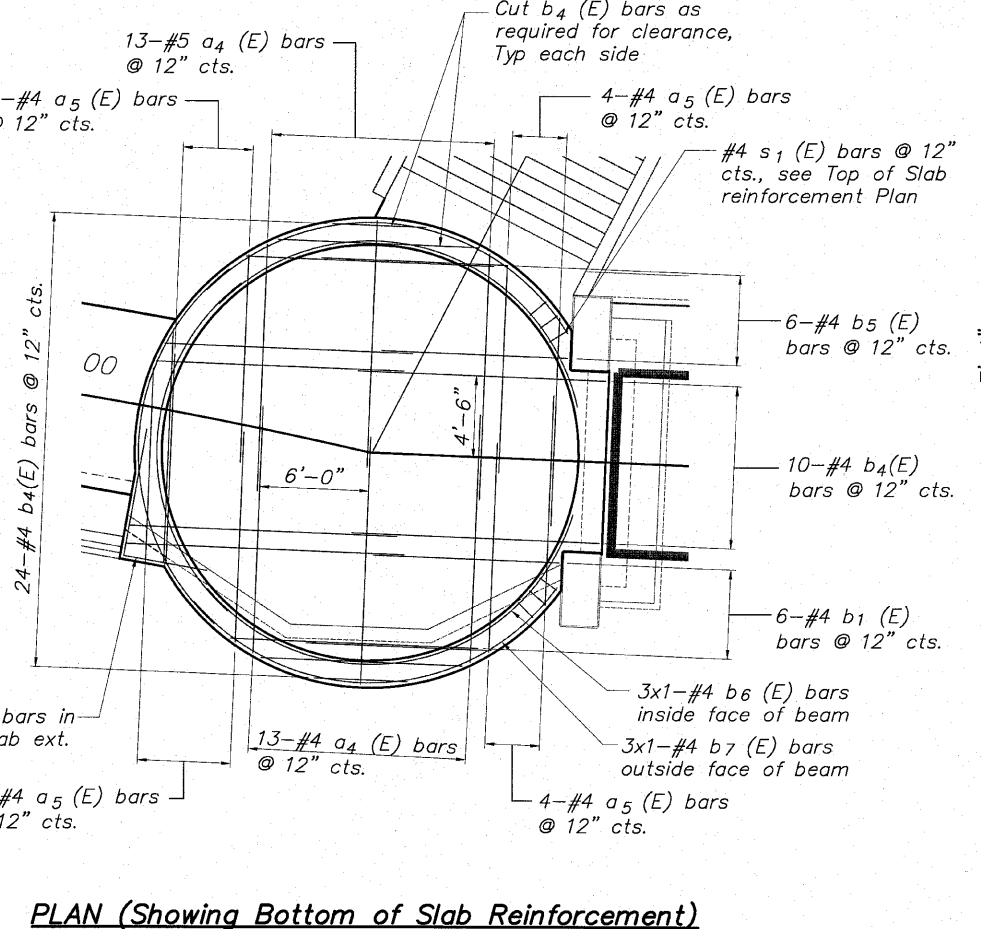
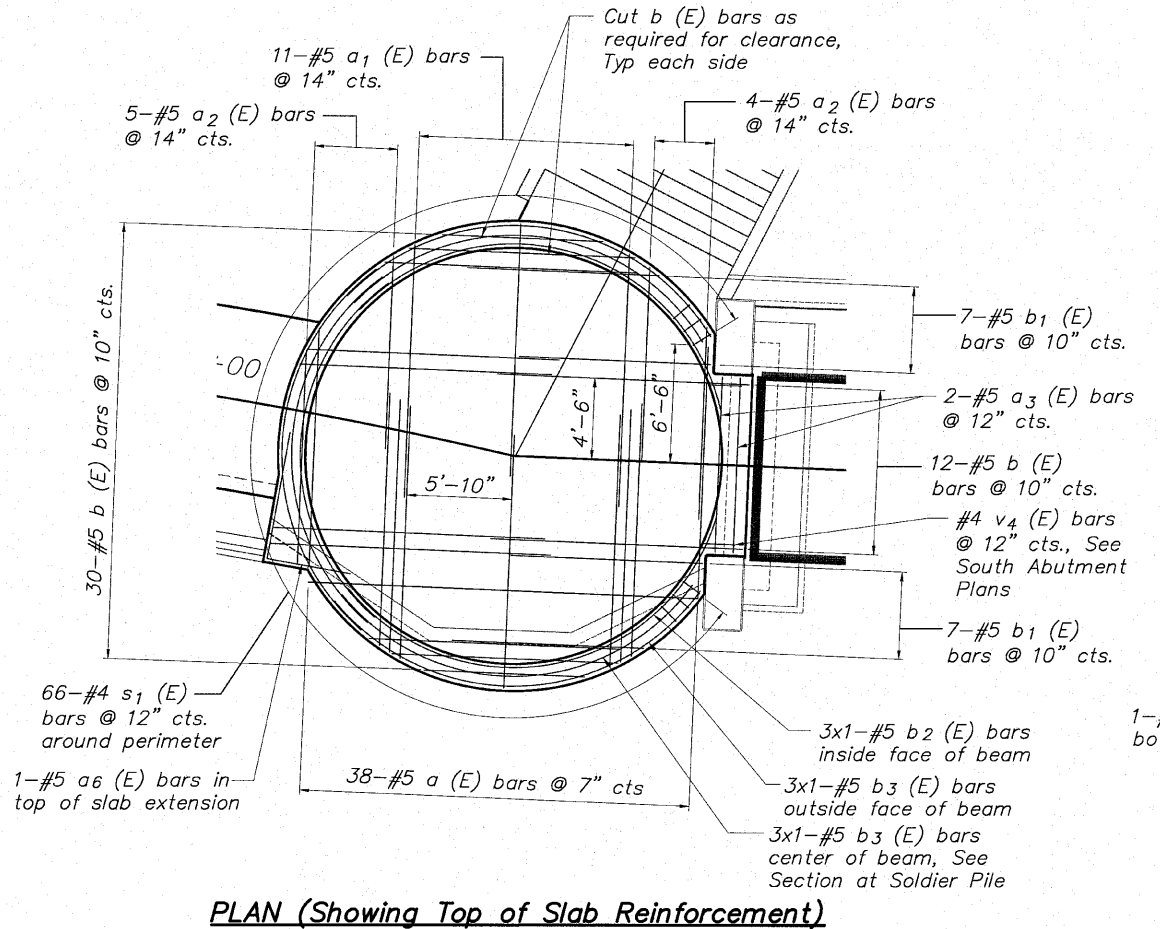


**BILL OF MATERIAL**

LOOKOUT No. 2 SLAB

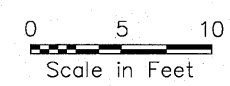
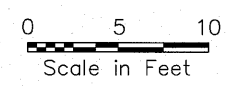
| Bar   | No. | Size | Length | Shape   |
|-------|-----|------|--------|---------|
| a (E) | 38  | #5   | 14'-7" | —       |
| a1(E) | 11  | #5   | 14'-0" | —       |
| a2(E) | 9   | #5   | 10'-8" | —       |
| a3(E) | 2   | #5   | 9'-8"  | —       |
| a4(E) | 26  | #4   | 13'-8" | —       |
| a5(E) | 19  | #4   | 11'-7" | —       |
| a6(E) | 2   | #5   | 11'-9" | —       |
| b (E) | 42  | #5   | 14'-0" | —       |
| b1(E) | 14  | #5   | 10'-8" | —       |
| b2(E) | 3   | #5   | 24'-0" | R11'-8" |
| b3(E) | 6   | #5   | 23'-3" | R12'-9" |
| b4(E) | 34  | #4   | 13'-8" | —       |
| b5(E) | 12  | #4   | 10'-3" | —       |
| b6(E) | 3   | #4   | 23'-8" | R11'-8" |
| b7(E) | 3   | #4   | 23'-0" | R12'-9" |
| s1(E) | 66  | #4   | 4'-5"  | —       |

| Concrete Structures               | Cu. Yd. | 16.1  |
|-----------------------------------|---------|-------|
| Reinforcement Bars (Epoxy Coated) | Pound   | 2,938 |



BAR a (E)  
SLAB DETAILS LOOKOUT No. 2  
PEDESTRIAN RIVERWALK  
ALONG THE ROCK RIVER  
WINNEBAGO COUNTY  
SECTION NO. 06-00543-00-BT  
STATION 208+17.67

|          |     |
|----------|-----|
| DESIGNED | CTB |
| CHECKED  | AAG |
| DRAWN    | JAW |
| CHECKED  | JMH |



**McClure**  
Engineering Associates, Inc.  
7222 Argus Drive  
Rockford, Illinois 61107-5837  
Tel: (815) 398-2332 Fax: (815) 398-2496  
Design Firm License: Illinois #184-000816  
Copyright 2010 By McClure Engineering Associates, Inc.

SHEET NO. 5  
5 SHEETS

| F.A. RTE.           | SECTION        | COUNTY           | TOTAL SHEETS | SHEET NO. |
|---------------------|----------------|------------------|--------------|-----------|
|                     | 06-00543-00-BT | WINNEBAGO        | 148          | 84        |
| CONTRACT NO.        |                |                  | 85521        |           |
| FED. ROAD DIST. NO. | ILLINOIS       | FED. AID PROJECT |              |           |