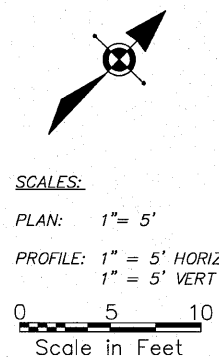
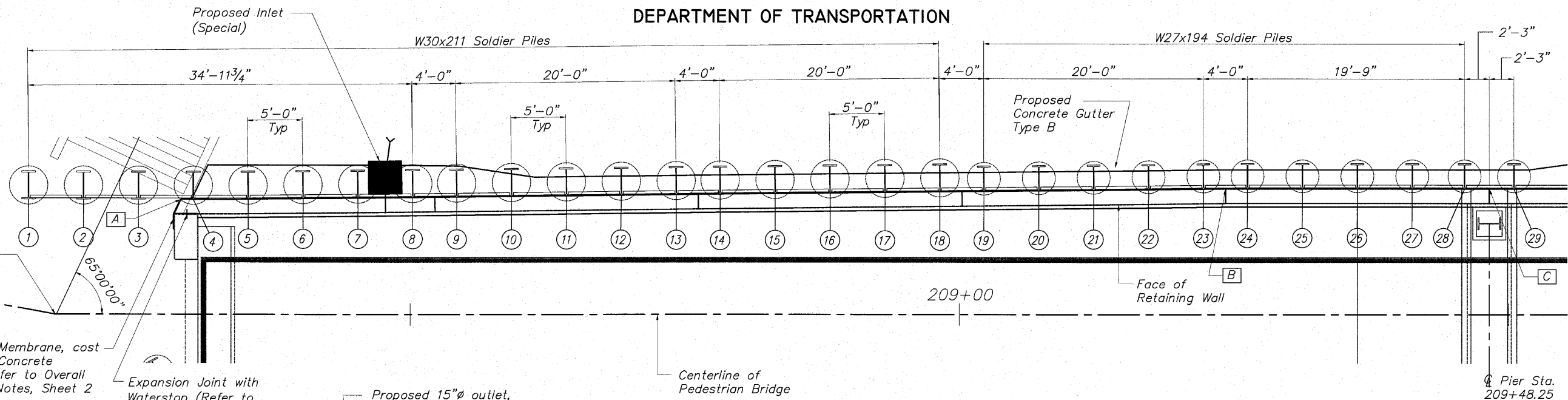


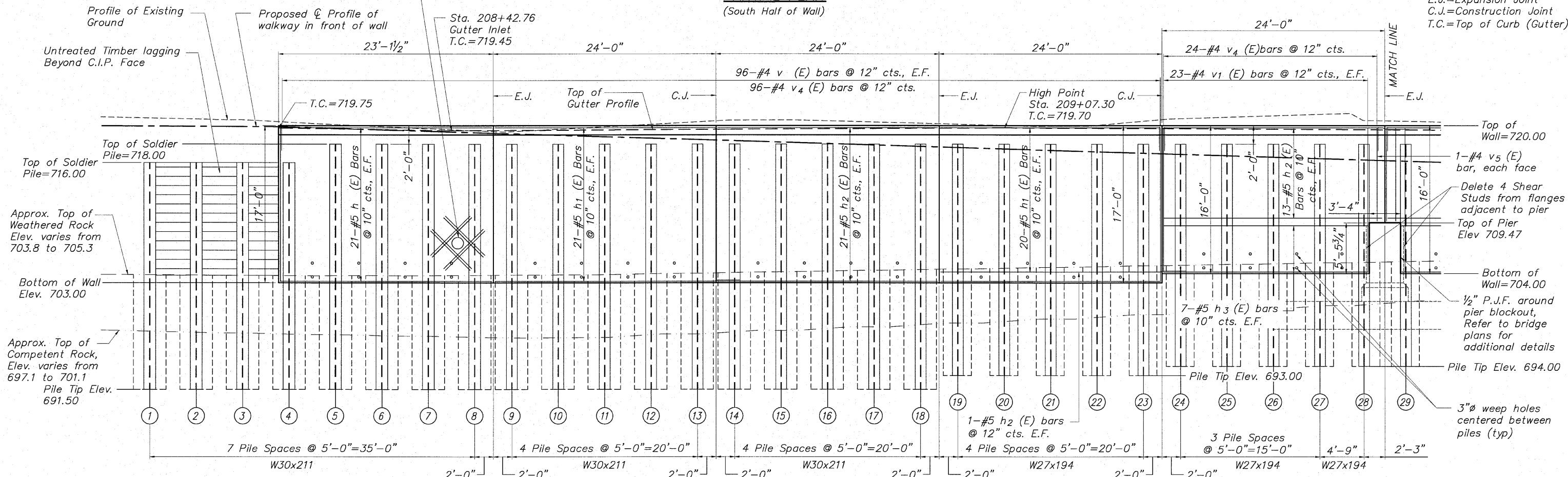
STATE OF ILLINOIS
DEPARTMENT OF TRANSPORTATION



SCALES:
PLAN: 1" = 5'
PROFILE: 1" = 5' HORIZ
1" = 5' VERT



PARTIAL PLAN
(South Half of Wall)



PARTIAL ELEVATION (Showing Reinforcement)
(Looking @ Front Face of Wall)

MINIMUM BAR LAP

No. 4 bars	1'-8"
No. 5 bars	2'-2"
No. 6 bars	2'-7"

SP WALL No. 21 DETAILS
PEDESTRIAN RIVERWALK
ALONG THE ROCK RIVER
WINNEBAGO COUNTY
SECTION NO. 06-00543-00-BT
STATION 208+13.27 TO
STATION 210+79.46

DESIGNED	CTB
CHECKED	AAG
DRAWN	JAW
CHECKED	JWH

McClure
Engineering Associates, Inc.
7282 Argus Drive
Rockford, Illinois 61107-5837
(815) 398-2332 Fax (815) 398-2466
Design Firm License: Illinois #184-000816
Copyright 2009 By McClure Engineering Associates, Inc.

SHEET NO. 2
5 SHEETS

F.A. RTE.	SECTION	COUNTY	TOTAL SHEETS	SHEET NO.
	06-00543-00-BT	WINNEBAGO	148	86
FED. ROAD DIST. NO.	ILLINOIS	FED. AID PROJECT	85521	