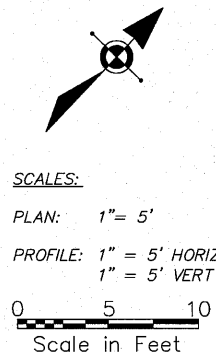
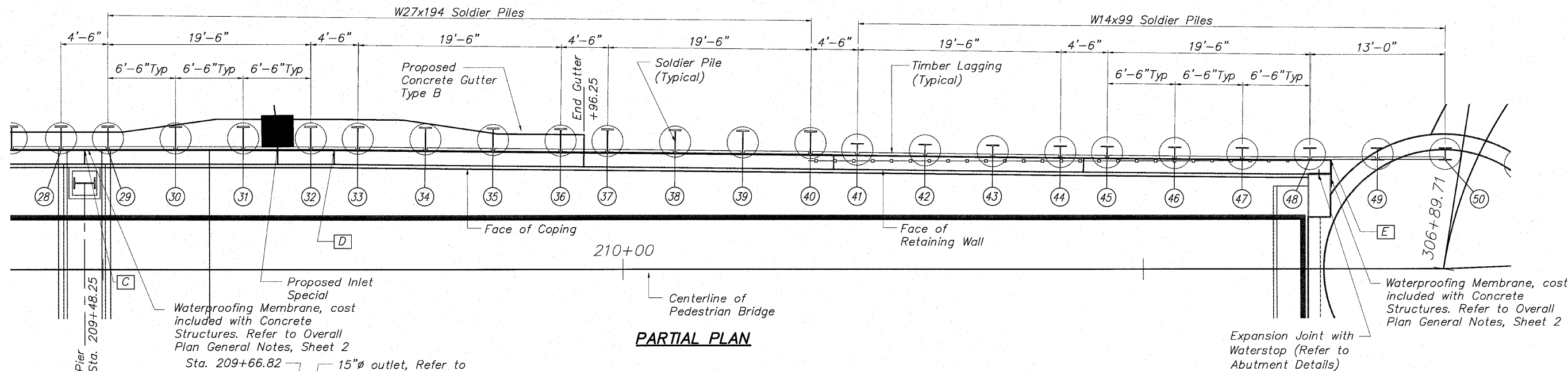


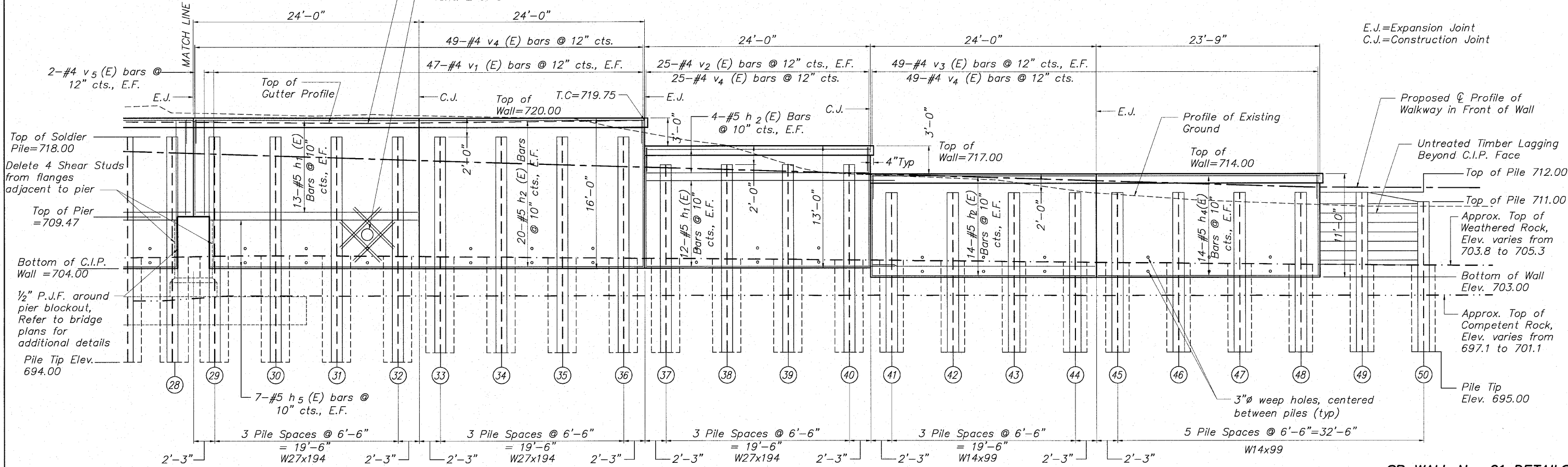
STATE OF ILLINOIS
DEPARTMENT OF TRANSPORTATION



SCALES:
PLAN: 1" = 5'
PROFILE: 1" = 5' HORIZ
1" = 5' VERT



PARTIAL PLAN



PARTIAL ELEVATION (Showing Reinforcement)
(Looking @ Front Face of Wall)

MINIMUM BAR LAP

- No. 4 bars 1'-8"
- No. 5 bars 2'-2"
- No. 6 bars 2'-7"

**SP WALL No. 21 DETAILS
PEDESTRIAN RIVERWALK
ALONG THE ROCK RIVER
WINNEBAGO COUNTY
SECTION NO. 06-00543-00-BT
STATION 208+13.27 TO
STATION 210+79.46**

DESIGNED	CTB
CHECKED	AAG
DRAWN	JAW
CHECKED	JWH

McClure
Engineering Associates, Inc.
7262 Argon Drive
(615) 399-2332
Rockford, Illinois 61107-5837
Fax (615) 399-2496
Design Firm License: Illinois #184-000816
Copyright 2009 By McClure Engineering Associates, Inc.

SHEET NO. 3
5 SHEETS

F.A. RTE.	SECTION	COUNTY	TOTAL SHEETS	SHEET NO.
	06-00543-00-BT	WINNEBAGO.	148	87
FED. ROAD DIST. NO.	ILLINOIS	FED. AID PROJECT	CONTRACT NO. 85521	