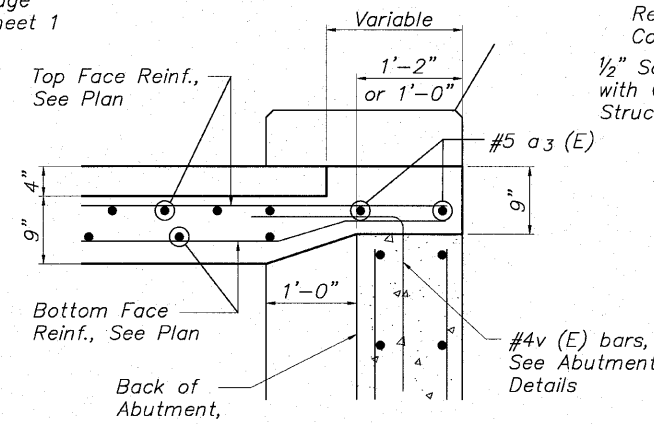
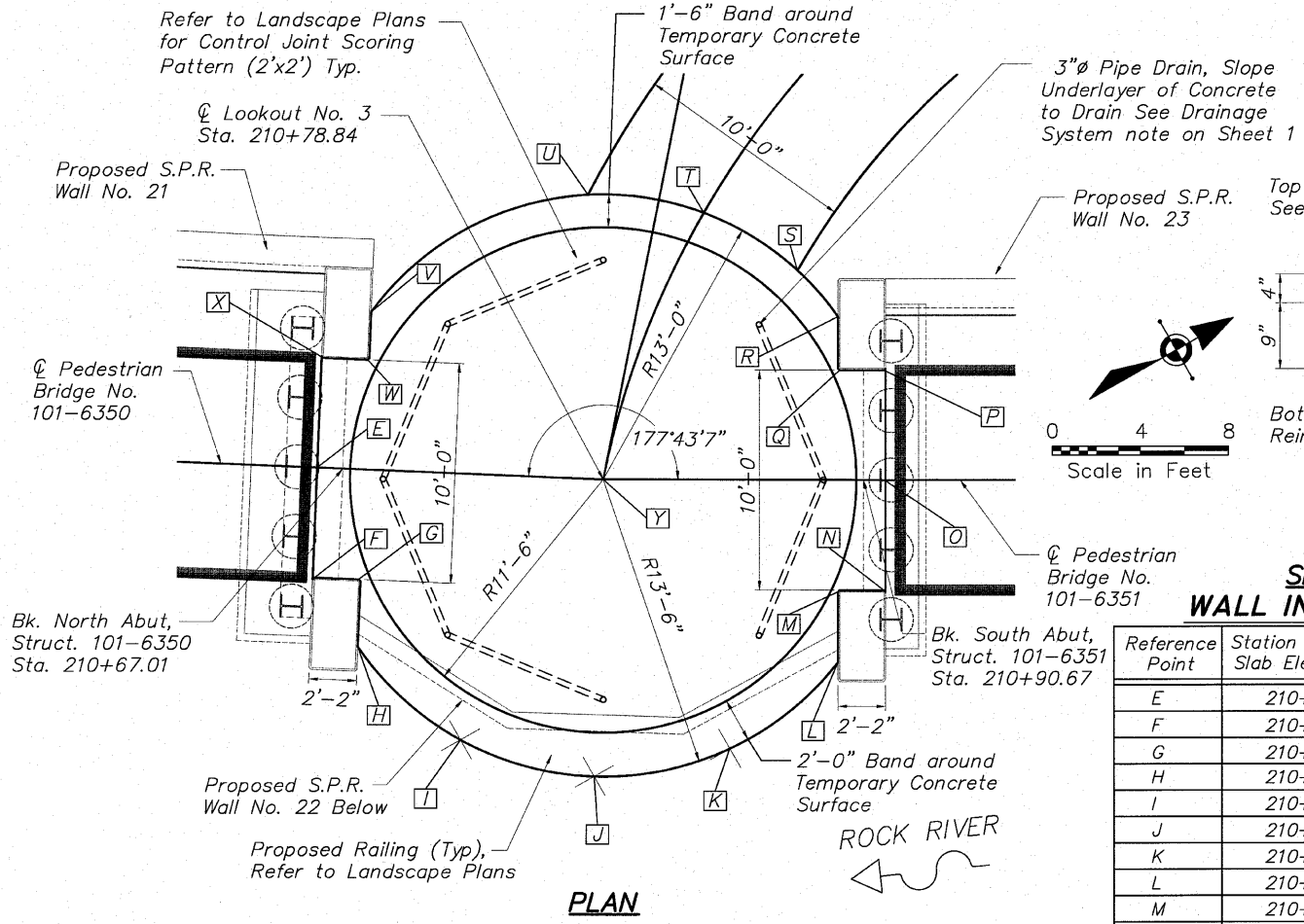
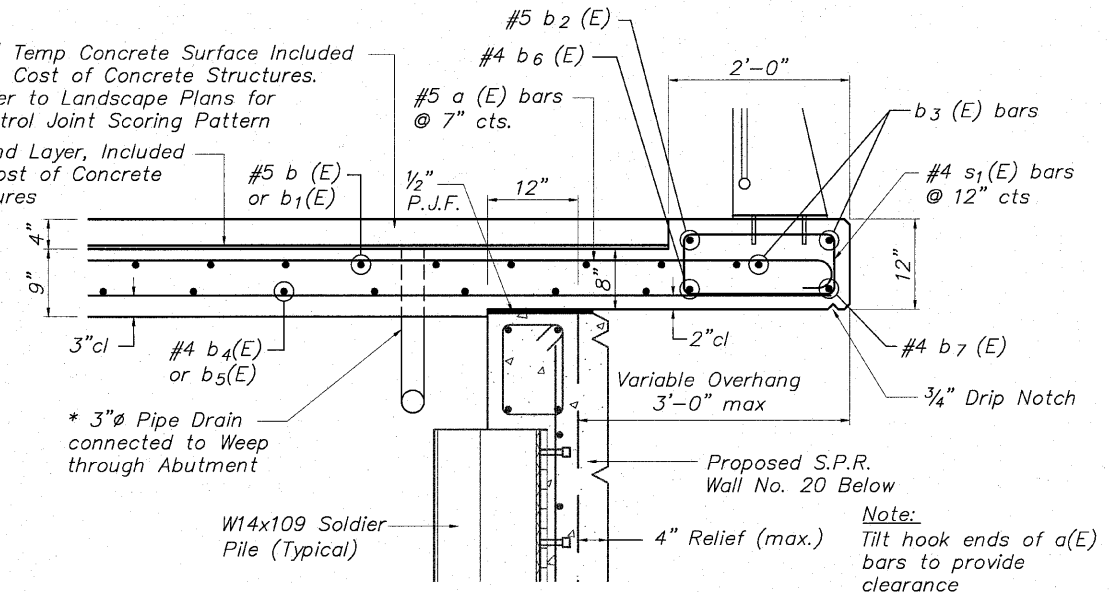


STATE OF ILLINOIS
DEPARTMENT OF TRANSPORTATION



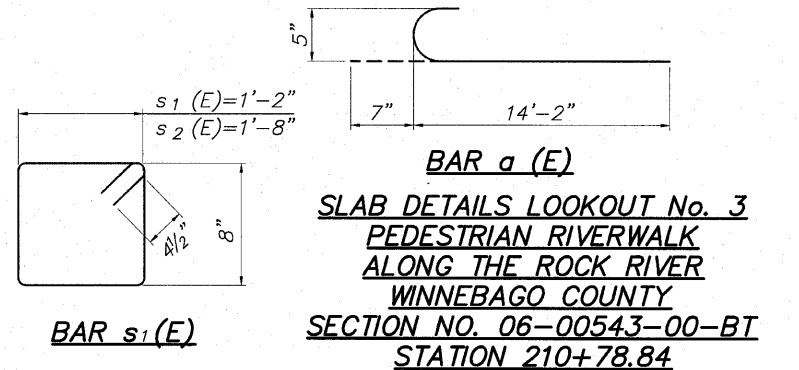
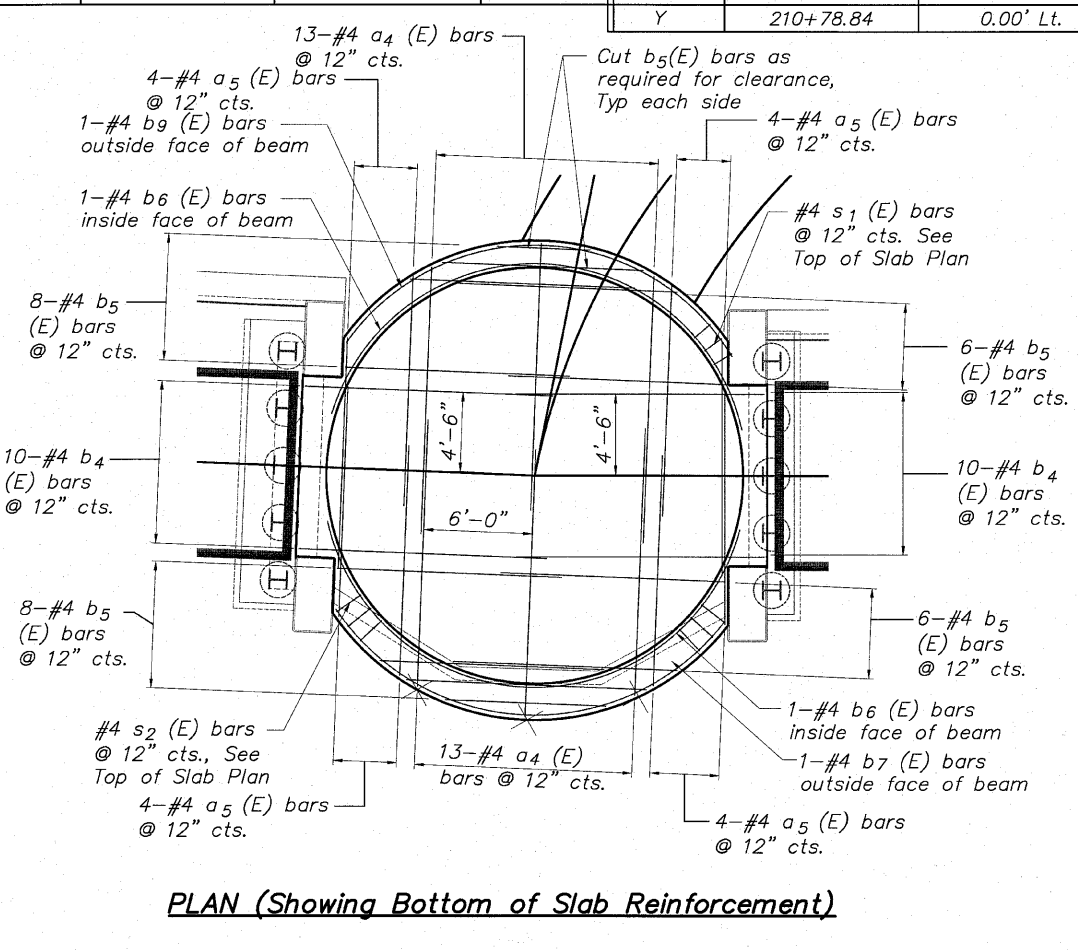
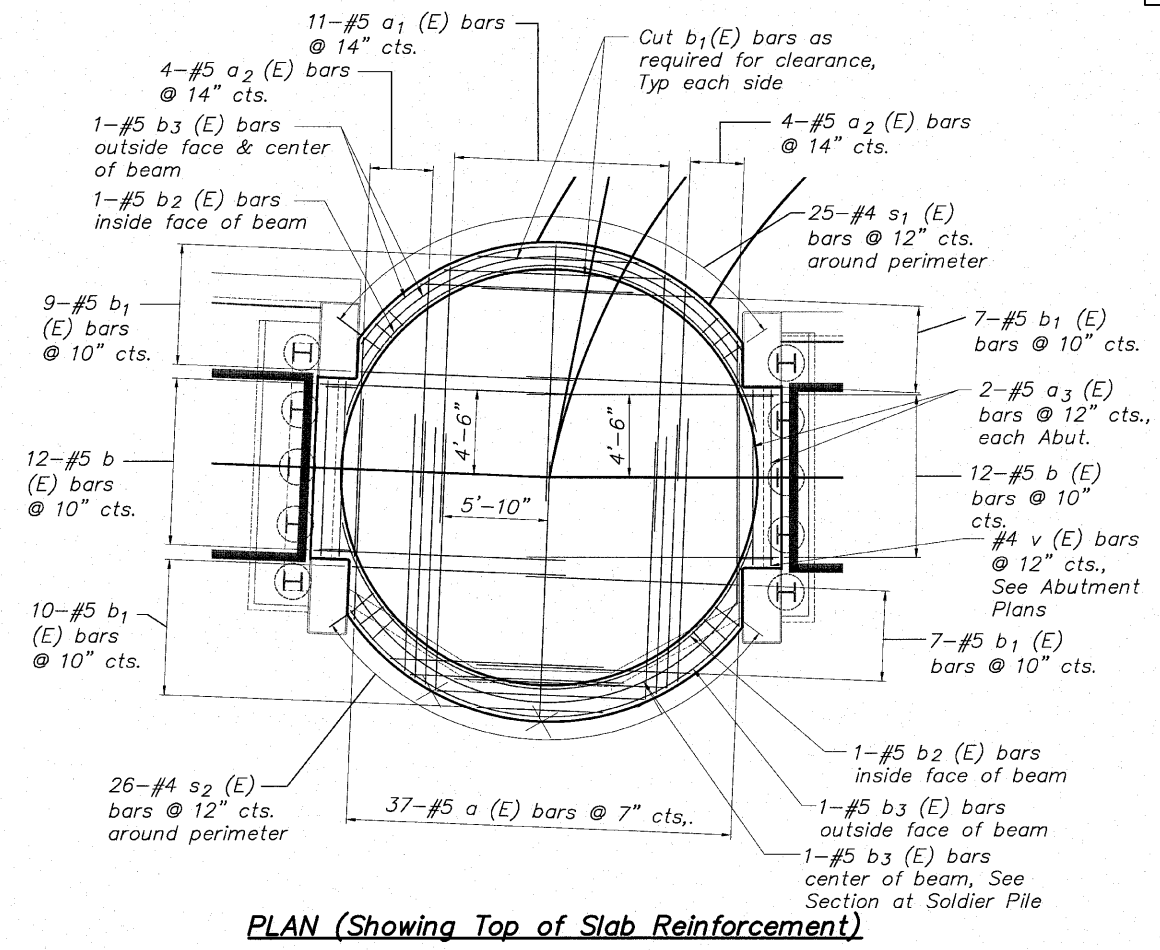
| Reference Point | Station to Top of Slab Elevation Pt. | Offset to Top of Slab Elevation Pt. | Elevation | Reference Point | Station to Top of Slab Elevation Pt. | Offset to Top of Slab Elevation Pt. | Elevation |
|-----------------|--------------------------------------|-------------------------------------|-----------|-----------------|--------------------------------------|-------------------------------------|-----------|
| E | 210+65.84 | 0.00' Rt. | 712.61 | O | 210+91.67 | 0.00' Rt. | 712.44 |
| F | 210+65.84 | 5.00' Rt. | 712.56 | P | 210+91.67 | 5.00' Lt. | 712.49 |
| G | 210+68.01 | 5.00' Rt. | 712.54 | Q | 210+89.58 | 5.00' Lt. | 712.51 |
| H | 210+68.01 | 8.06' Rt. | 712.51 | R | 210+89.50 | 7.44' Lt. | 712.54 |
| I | 210+72.84 | 12.09' Rt. | 712.44 | S | 210+87.67 | 9.55' Lt. | 712.58 |
| J | 210+78.84 | 13.50' Rt. | 712.38 | T | 210+83.41 | 12.17' Lt. | 712.64 |
| K | 210+84.59 | 12.21' Rt. | 712.31 | U | 210+77.64 | 12.94' Lt. | 712.65 |
| L | 210+89.50 | 8.28' Rt. | 712.31 | V | 210+68.01 | 7.19' Lt. | 712.66 |
| M | 210+89.58 | 5.00' Rt. | 712.37 | W | 210+68.01 | 5.00' Lt. | 712.64 |
| N | 210+91.67 | 5.00' Rt. | 712.39 | X | 210+65.84 | 5.00' Lt. | 712.66 |
| | | | | Y | 210+78.84 | 0.00' Lt. | 712.52 |



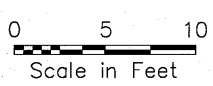
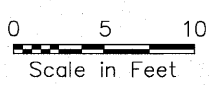
BILL OF MATERIAL

LOOKOUT No. 3 SLAB

| Bar | No. | Size | Length | Shape |
|-----------------------------------|-----|------|---------|---------|
| a (E) | 37 | #5 | 14'-9" | — |
| a1(E) | 11 | #5 | 14'-2" | — |
| a2(E) | 8 | #5 | 10'-8" | — |
| a3(E) | 4 | #5 | 9'-8" | — |
| a4(E) | 26 | #4 | 14'-9" | — |
| a5(E) | 16 | #4 | 12'-9" | — |
| b (E) | 24 | #5 | 13'-11" | — |
| b1(E) | 33 | #5 | 11'-9" | — |
| b2(E) | 2 | #5 | 30'-9" | R11'-8" |
| b3(E) | 2 | #5 | 25'-0" | R13'-4" |
| b4(E) | 20 | #4 | 13'-8" | — |
| b5(E) | 28 | #4 | 12'-5" | — |
| b6(E) | 2 | #4 | 31'-0" | R11'-8" |
| b7(E) | 1 | #4 | 25'-0" | R12'-9" |
| b8(E) | 2 | #5 | 24'-9" | R12'-9" |
| b9(E) | 1 | #4 | 25'-2" | R12'-9" |
| s1(E) | 25 | #4 | 4'-5" | — |
| s2(E) | 26 | #4 | 5'-5" | — |
| Concrete Structures | | | Cu. Yd. | 16.2 |
| Reinforcement Bars (Epoxy Coated) | | | Pound | 2,815 |



| | |
|----------|-----|
| DESIGNED | CTB |
| CHECKED | AAG |
| DRAWN | JAW |
| CHECKED | JWH |



McClure
Engineering Associates, Inc.

7282 Argus Drive
Rockford, Illinois 61107-9837
(815) 398-2332 Fax (815) 398-2496

Design Firm License: Illinois #184-000816
Copyright 2010 By McClure Engineering Associates, Inc.

SHEET NO. 5
5 SHEETS

| F.A. RTE. | SECTION | COUNTY | TOTAL SHEETS | SHEET NO. |
|---------------------|----------------|------------------|--------------|-----------|
| | 06-00543-00-BT | WINNEBAGO | 148 | 94 |
| CONTRACT NO. | | | 85521 | |
| FED. ROAD DIST. NO. | ILLINOIS | FED. AID PROJECT | | |

I:\108-008 RIVERWALK MUSEUM\DESIGN\DRAWINGS\STRUCTURAL\GP&E\08-008 LOOKOUT DET.DWG PLAN&DET LOOKOUTS_8/30/2010 5:10:00 PM J.H. JWH